

**SOUTH ABUTMENT  
BAR LIST**

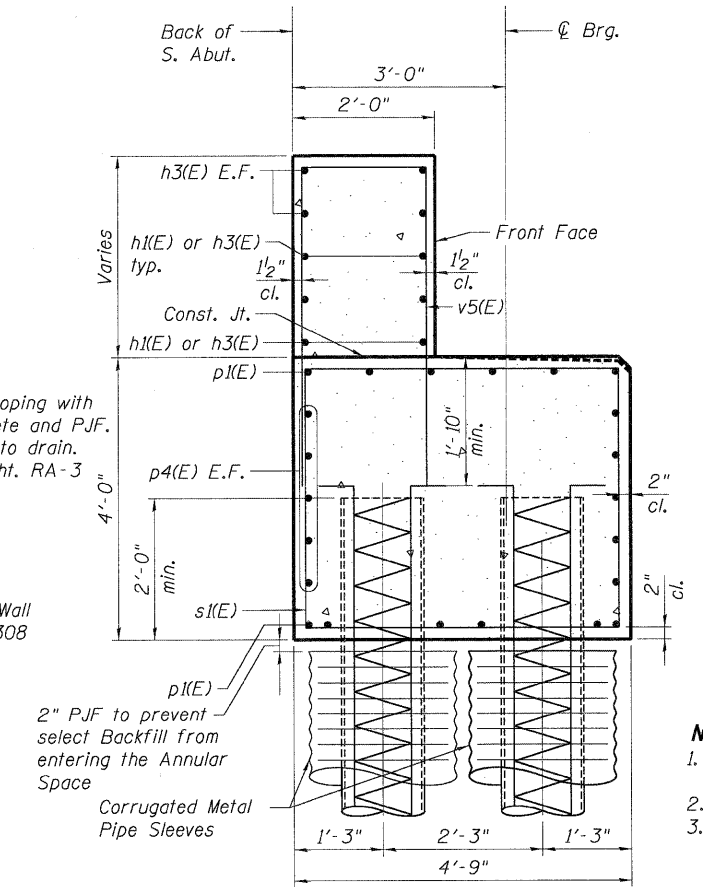
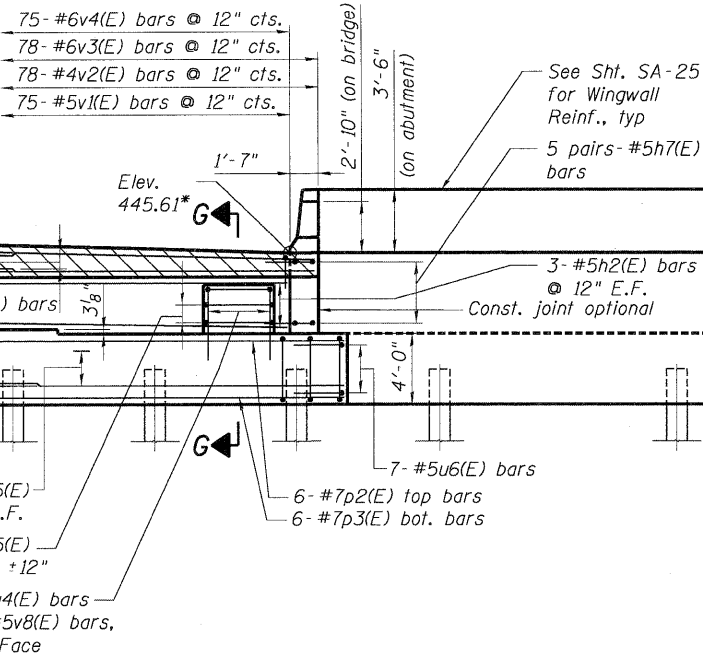
Bar	No.	Size	Length	Shape
h1(E)	12	#5	30'-0"	
h2(E)	6	#5	22'-9"	
h3(E)	10	#5	25'-11"	
h4(E)	10	#6	30'-0"	
h5(E)	5	#6	26'-0"	
h6(E)	10	#5	6'-9"	
h7(E)	10	#5	9'-0"	
h8(E)	10	#5	25'-4"	
h9(E)	10	#5	22'-1"	
h10(E)	12	#5	19'-8"	
n1(E)	62	#6	12'-2"	
n2(E)	49	#6	14'-2"	
p1(E)	24	#7	36'-0"	
p2(E)	6	#7	41'-8"	
p3(E)	6	#7	40'-4"	
p4(E)	30	#5	30'-0"	
p5(E)	15	#5	19'-10"	
p6(E)	5	#5	32'-8"	
p7(E)	16	#7	28'-11"	
p8(E)	16	#7	20'-6"	
s1(E)	102	#4	16'-11"	
s2(E)	47	#4	15'-5"	
u1(E)	7	#5	9'-6"	
u2(E)	52	#5	8'-10"	
u3(E)	25	#5	6'-6"	
u4(E)	2	#5	12'-3"	
u5(E)	2	#5	11'-5"	
u6(E)	7	#5	9'-6"	
v1(E)	75	#5	4'-9"	
v2(E)	78	#4	4'-3"	
v3(E)	78	#6	7'-6"	
v4(E)	75	#6	5'-10"	
v5(E)	27	#6	16'-1"	
v6(E)	62	#6	7'-5"	
v7(E)	31	#5	7'-2"	
v8(E)	5	#5	8'-0"	

For details of Bar Splicers, see sheet SA-32  
For details of piles, see sheet SA-36.

**SOUTH ABUTMENT  
BILL OF MATERIALS**

Item	Unit	Total
Concrete Structures	Cu. Yd.	155.9
Reinforcement Bars, Epoxy Coated	Pound	16,540
Furnishing Metal Shell Piles 14"x0.250"	Foot	1,568
Driving Piles	Foot	1,568
Test Pile Metal Shells	Each	1
Concrete Sealer	Sq. Ft.	871

- NOTES:**
- Bars indicated thus 5x3-#5 etc. indicates 5 lines with 3 lengths per line.
  - E.F. indicates each face.
  - Drive piles, install CMP pile sleeves, fill annular space around piles with sand, construct MSE Wall. Cost of CMP pile sleeves, sand, and P.J.F. are included with Metal Shell Piles.



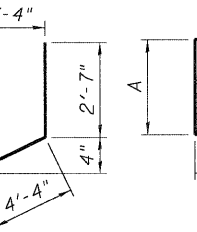
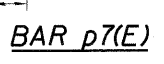
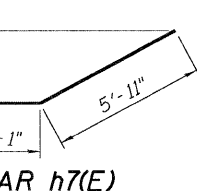
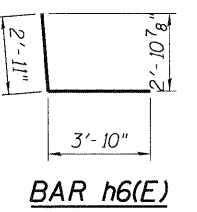
**SECTION A-A**

**SECTION B-B**

**MIN. LAP LENGTH**  
(Unless noted otherwise)

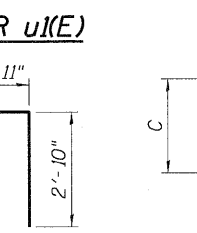
Bar Size	Lap
#5	2'-7"
#6	4'-5"
#7	5'-10"

**ELEVATION** \*Elevations @ Front Face of Backwall  
(Looking South)



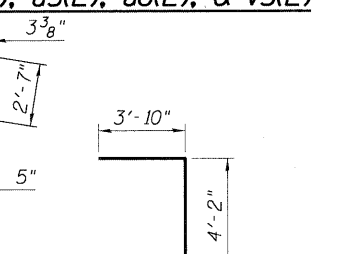
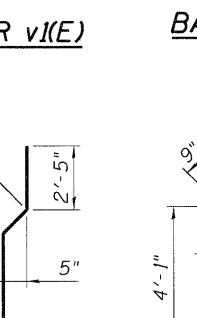
Bar	A	B
s1(E)	3'-8"	4'-5"
s2(E)	3'-8"	3'-8"

**BARS s1(E) & s2(E)**



Bar	C	D
n1(E)	5'-5"	1'-4"
n2(E)	6'-5"	1'-4"
u2(E)	2'-4"	4'-2"
u3(E)	2'-7"	1'-4"
u4(E)	4'-3"	3'-9"
u5(E)	3'-10"	3'-9"
u6(E)	2'-7"	4'-4"
v5(E)	7'-2"	1'-9"

**BARS n1(E), n2(E), u2(E), u3(E), u4(E), u5(E), u6(E), & v5(E)**



**BAR v2(E)**

**BAR v6(E)**

**BAR v8(E)**

FILE NAME = USER NAME = \*USER\* DESIGNED - MDJ REVISED - DRAWN - MDJ REVISED - CHECKED - JLR REVISED - DATE - 05/13/11 REVISED -  
 0822328.CDN\10.001-AB.DCN \\_0822328.CDN\10.001-AB.DCN \\_0822328.CDN\10.001-AB.DCN \\_0822328.CDN\10.001-AB.DCN \\_0822328.CDN\10.001-AB.DCN  
 5-11-2011 9:53:25  
**TENG** TENG & ASSOCIATES, INC. ENGINEERS/ARCHITECTS/PLANNERS CHICAGO, ILLINOIS

**STATE OF ILLINOIS  
DEPARTMENT OF TRANSPORTATION  
IL 3 OVER I-70**

**SOUTH ABUTMENT  
ELEVATION & SECTIONS**

F.A.P. RTE.	SECTION	COUNTY	TOTAL SHEETS	SHEET NO.
998	82-2-1HWB-1	ST. CLAIR	345	158
SN 082-0328		CONTRACT NO. 76D05		
FED. ROAD DIST. NO.		ILLINOIS FED. AID PROJECT		

SCALE: SHEET NO. SA-23 OF SA-57 STA. 1683+43.17 TO STA.