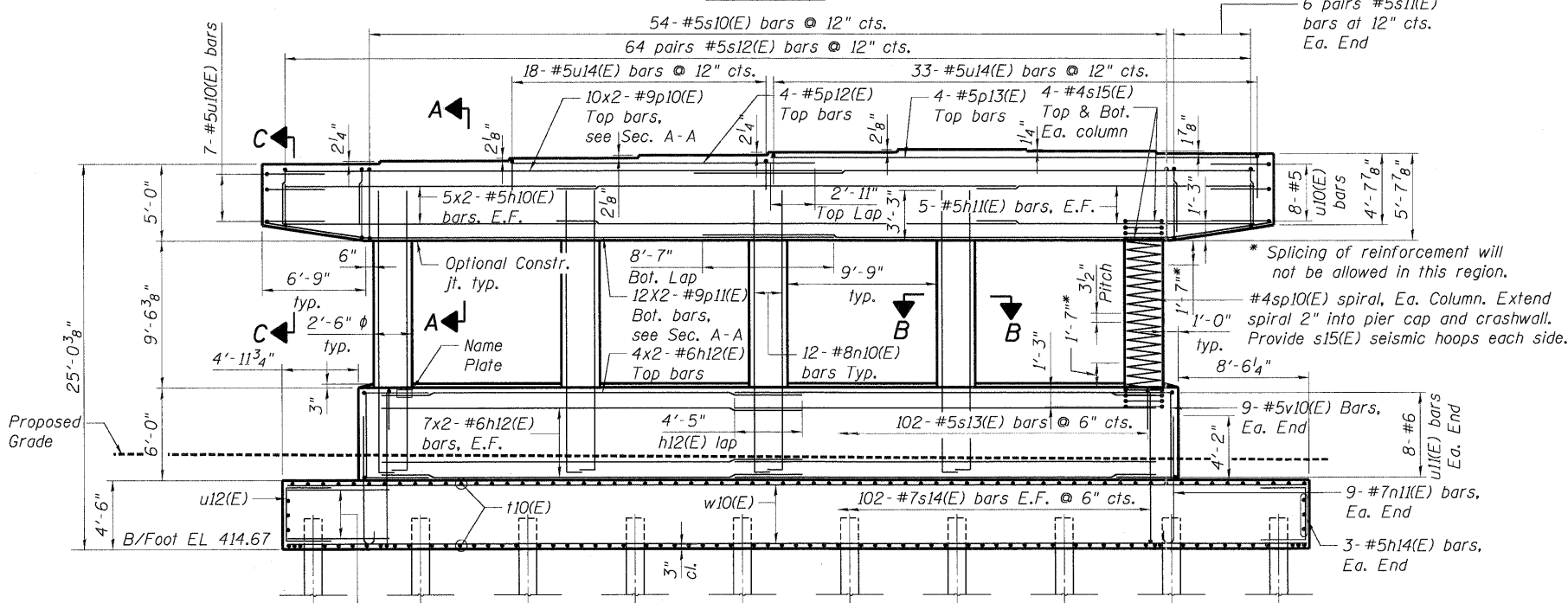
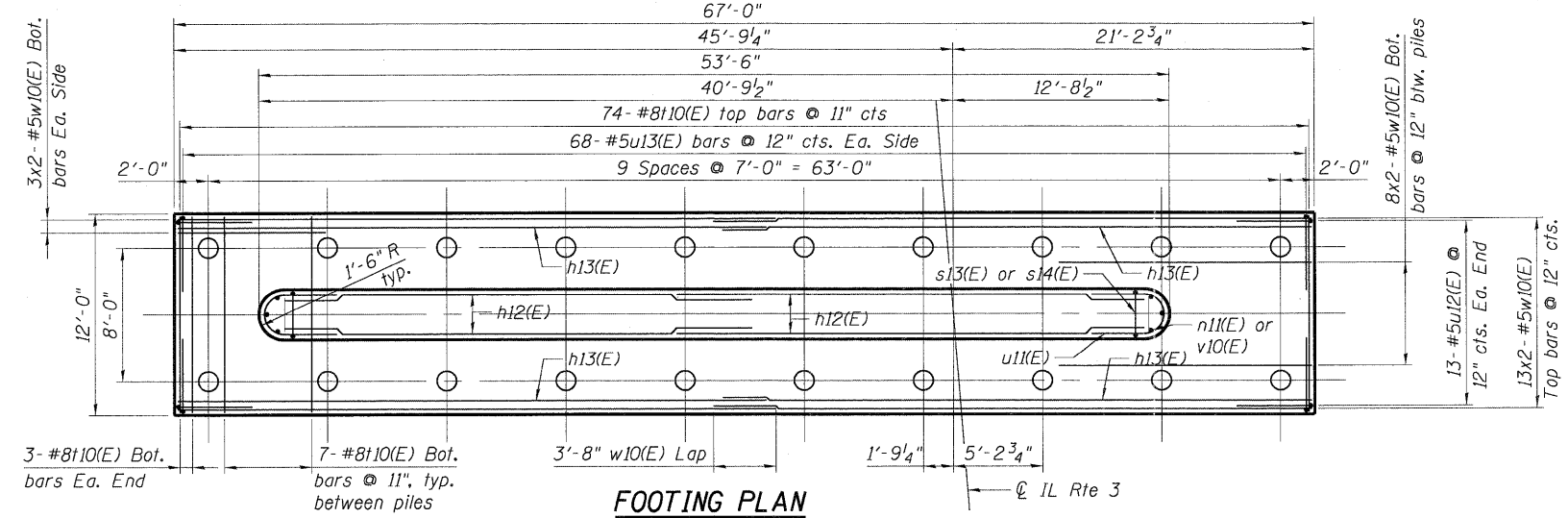


CAP PLAN



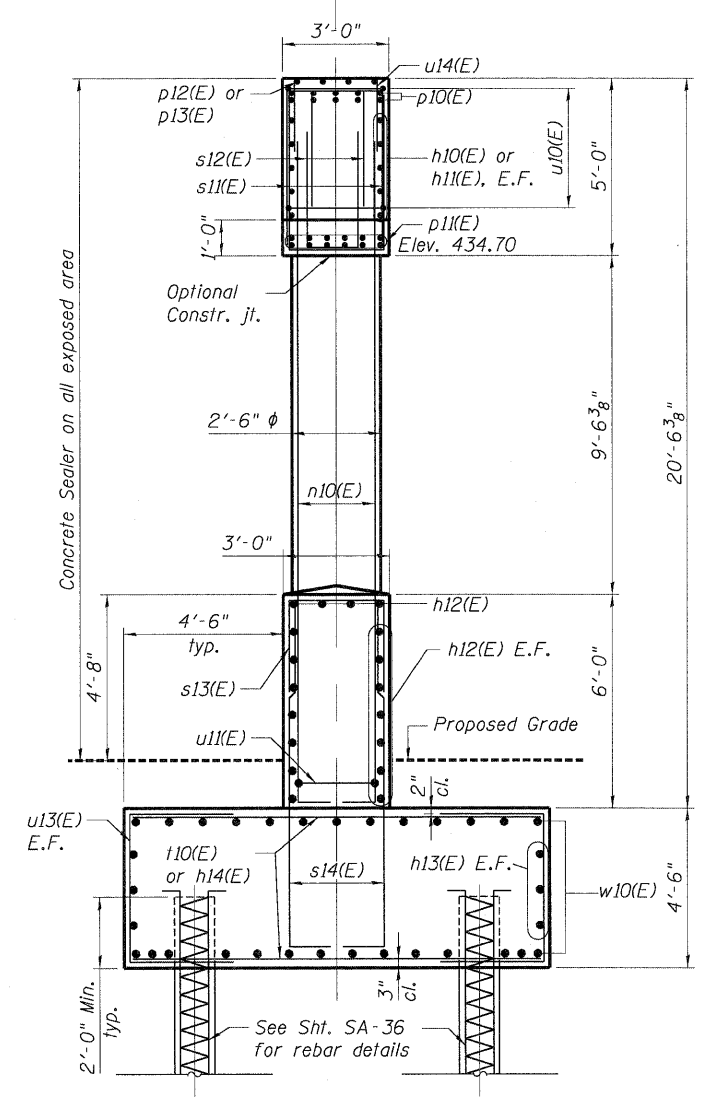
ELEVATION
(Looking North)



FOOTING PLAN

BEARING SEAT ELEVATIONS

Girder	Elevations
1	439.70
2	439.89
3	440.07
4	440.25
5	440.44
6	440.62
7	440.52
8	440.36



END VIEW

MIN. LAP LENGTH
(Unless noted otherwise)

Bar Size	Lap
#5	2'-7"
#6	3'-1"
#9	9'-8"

PILE DATA

Type: MS14X0.25 Metal Shell Piles
 Nominal Required Bearing: 413 kips/pile
 Factored Resistance Available: 227 kips/pile
 Est. Length: 83 ft
 No. Production Piles: 19
 No. Test Piles: 1

NOTES:

- Space reinforcement in cap to miss anchor bolts.
- Four steps monolithically with cap.
- For details of piles, see sheet SA-36.
- E.F. indicates each face.
- Bars indicated thus 5x3-#5 etc. indicates 5 lines of bars with 3 lengths per line.
- Space u12(E) & u13(E) bars to miss piles.
- When splicing of spiral reinforcement is necessary, the spirals shall be provided with 1/2 extra turns at the ends to be spliced. These additional turns shall either be welded together according to AWS D1.4, or shall both terminate with a 135° standard hook.

10/22/2010 10:01 AM C:\WORK\10222010\CONV\10-001-PIER.DWG...
 5-11-2011 9:53:36
 NEWBAND \S-5004\KAY\BULL\IP-TRANS\071222\30865 08\STRUCT\CAD\01 DESIGN\0820328\SHEET\0820328-CONV-10-001-SH1-PLD.DWG