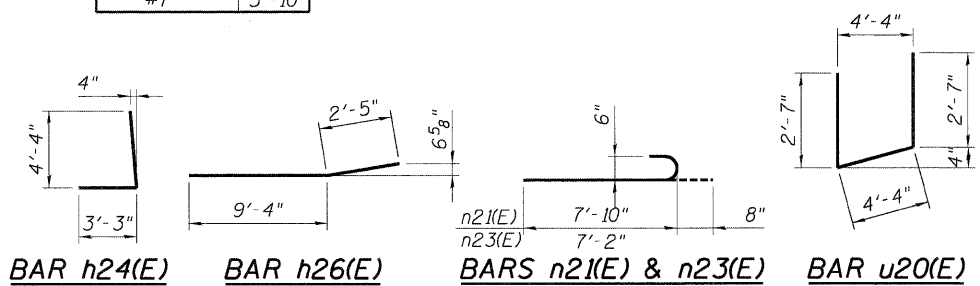


MIN. LAP LENGTH
(Unless noted otherwise)

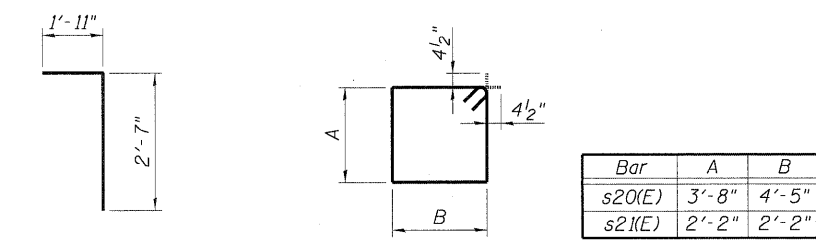
| Bar Size | Lap |
|----------|--------|
| #5 | 2'-7" |
| #6 | 4'-5" |
| #7 | 5'-10" |

ELEVATION
(Looking North)

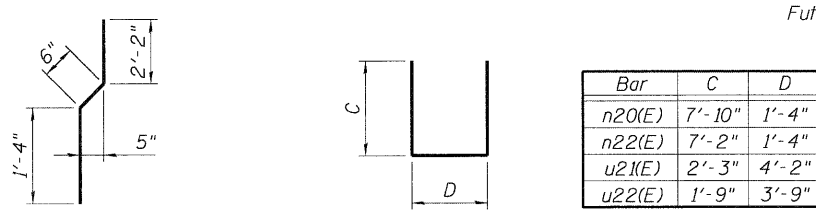
*Elevations @ Front Face of Backwall



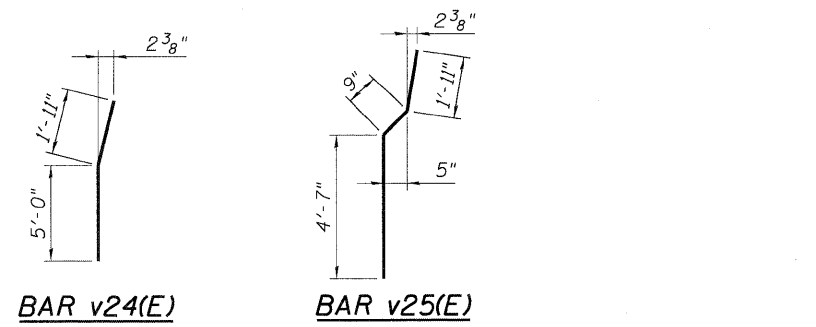
BAR h24(E) **BAR h26(E)** **BARS n21(E) & n23(E)** **BAR u20(E)**



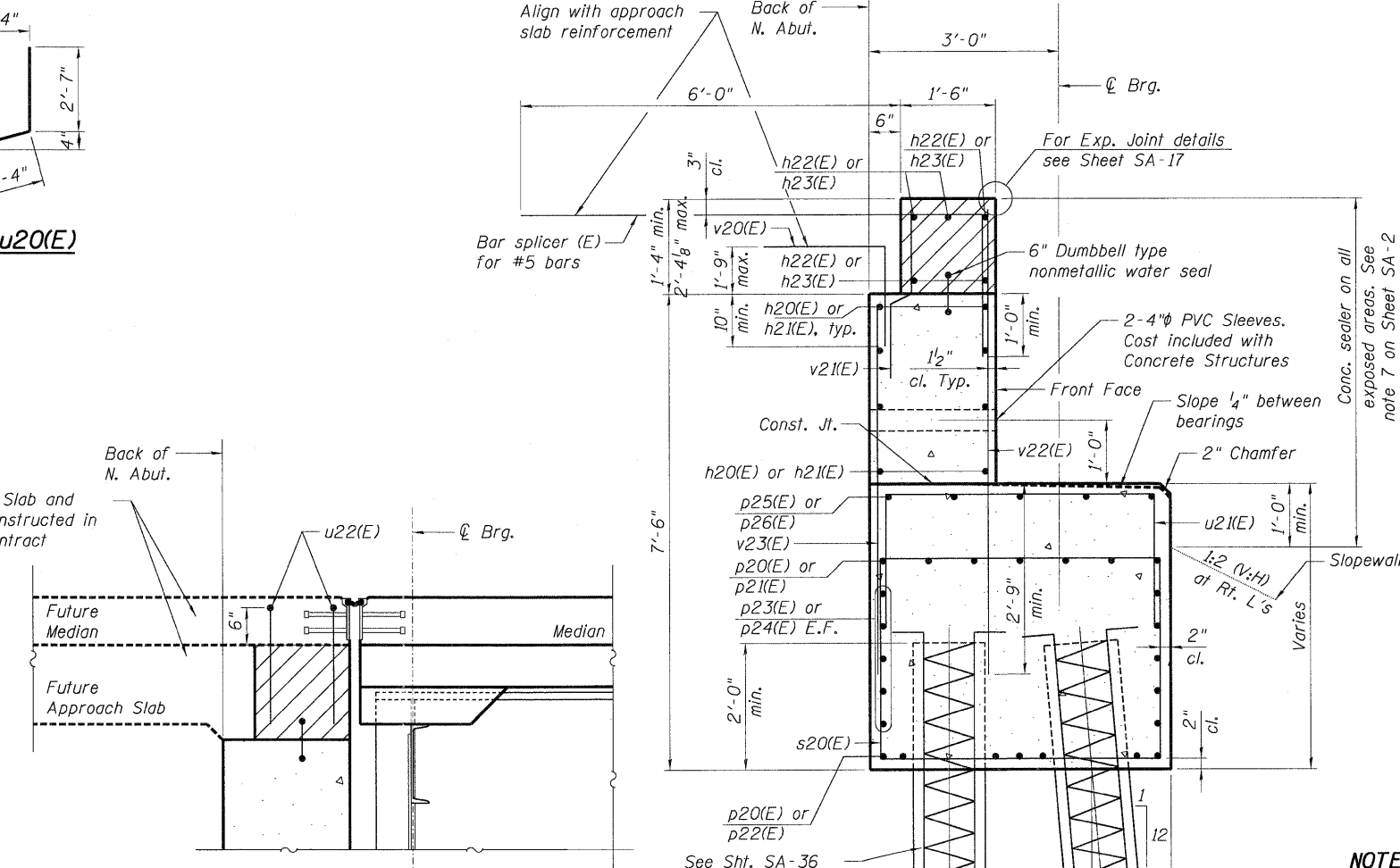
BAR v20(E) **BARS s20(E) & s21(E)**



BAR v21(E) **BARS n20(E), n22(E), u21(E), & u22(E)**



BAR v24(E) **BAR v25(E)**



SECTION G-G

SECTION A-A

NORTH ABUTMENT BAR LIST

| Bar | No. | Size | Length | Shape |
|--------|-----|------|---------|-------|
| h20(E) | 16 | #5 | 30'-0" | — |
| h21(E) | 8 | #5 | 7'-0" | — |
| h22(E) | 10 | #6 | 30'-0" | — |
| h23(E) | 5 | #6 | 13'-10" | — |
| h24(E) | 24 | #5 | 7'-7" | └ |
| h25(E) | 28 | #5 | 11'-8" | — |
| h26(E) | 20 | #5 | 11'-9" | — |
| n20(E) | 14 | #6 | 17'-0" | └ |
| n21(E) | 8 | #6 | 8'-6" | └ |
| n22(E) | 14 | #6 | 15'-8" | └ |
| n23(E) | 8 | #6 | 7'-10" | └ |
| p20(E) | 28 | #7 | 30'-0" | — |
| p21(E) | 7 | #7 | 16'-9" | — |
| p22(E) | 7 | #7 | 15'-5" | — |
| p23(E) | 20 | #5 | 30'-0" | — |
| p24(E) | 10 | #5 | 10'-3" | — |
| p25(E) | 5 | #5 | 19'-10" | — |
| p26(E) | 5 | #5 | 32'-6" | — |
| p27(E) | 24 | #6 | 11'-10" | — |
| s20(E) | 68 | #4 | 16'-11" | └ |
| s21(E) | 24 | #4 | 9'-5" | └ |
| u20(E) | 14 | #5 | 9'-6" | └ |
| u21(E) | 61 | #4 | 8'-8" | └ |
| u22(E) | 2 | #4 | 7'-3" | └ |
| v20(E) | 69 | #5 | 4'-6" | └ |
| v21(E) | 72 | #4 | 4'-0" | └ |
| v22(E) | 72 | #6 | 7'-6" | └ |
| v23(E) | 69 | #6 | 6'-1" | └ |
| v24(E) | 8 | #6 | 6'-11" | └ |
| v25(E) | 28 | #6 | 7'-3" | └ |
| v26(E) | 36 | #5 | 6'-7" | └ |

For details of Bar Splicers, see sheet SA-32
For details of piles, see sheet SA-36

NORTH ABUTMENT BILL OF MATERIALS

| Item | Unit | Total |
|---|---------|--------|
| Concrete Structures | Cu. Yd. | 90.3 |
| Reinforcement Bars, Epoxy Coated | Pound | 10,400 |
| Furnishing Metal Shell Piles 14"x0.250" | Foot | 1,010 |
| Driving Piles | Foot | 1,010 |
| Test Pile Metal Shells | Each | 1 |
| Structure Excavation | Cu. Yd. | 179 |
| Concrete Sealer | Sq. Ft. | 601 |

- NOTES:**
1. Bars indicated thus 5x3-#5 etc. indicates 5 lines with 3 lengths per line.
 2. E.F. indicates each face.
 3. The exposed end of v20(E) bars are to be protected. The unused half of the abutment bar splicers to be incorporated into the approach slab are to be stored by the Contractor at a location as directed by the Engineer.

FILE NAME = ... USER NAME = #USER# ... DESIGNED - MDJ ... REVISIONS ... DATE - 05/13/11 ... STATE OF ILLINOIS DEPARTMENT OF TRANSPORTATION ... NORTH ABUTMENT ELEVATION & SECTION ... SHEET NO. 164 ... CONTRACT NO. 76005

| | | | | | | | | |
|-------------|---|--|---|--|---|---|---|-----------------------------------|
| TENG | TENG & ASSOCIATES, INC. ENGINEERS/ARCHITECTS/PLANNERS CHICAGO, ILLINOIS | USER NAME = #USER# PLOT SCALE = #SCALE# PLOT DATE = #DATE# | DESIGNED - MDJ DRAWN - MDJ CHECKED - JLR DATE - 05/13/11 | REVISED - REVISED - REVISED - REVISED - | STATE OF ILLINOIS DEPARTMENT OF TRANSPORTATION IL 3 OVER 1-70 | NORTH ABUTMENT ELEVATION & SECTION | F.A.P. RTE. 998 SECTION 82-2-1HVB-1 COUNTY ST. CLAIR TOTAL SHEETS 345 SHEET NO. 164 | SN 082-0328 CONTRACT NO. 76005 |
| | SCALE: SHEET NO. SA-29 OF SA-57 STA. 1683+43.17 TO STA. | | FED. ROAD DIST. NO. ILLINOIS FED. AID PROJECT | | | | | |