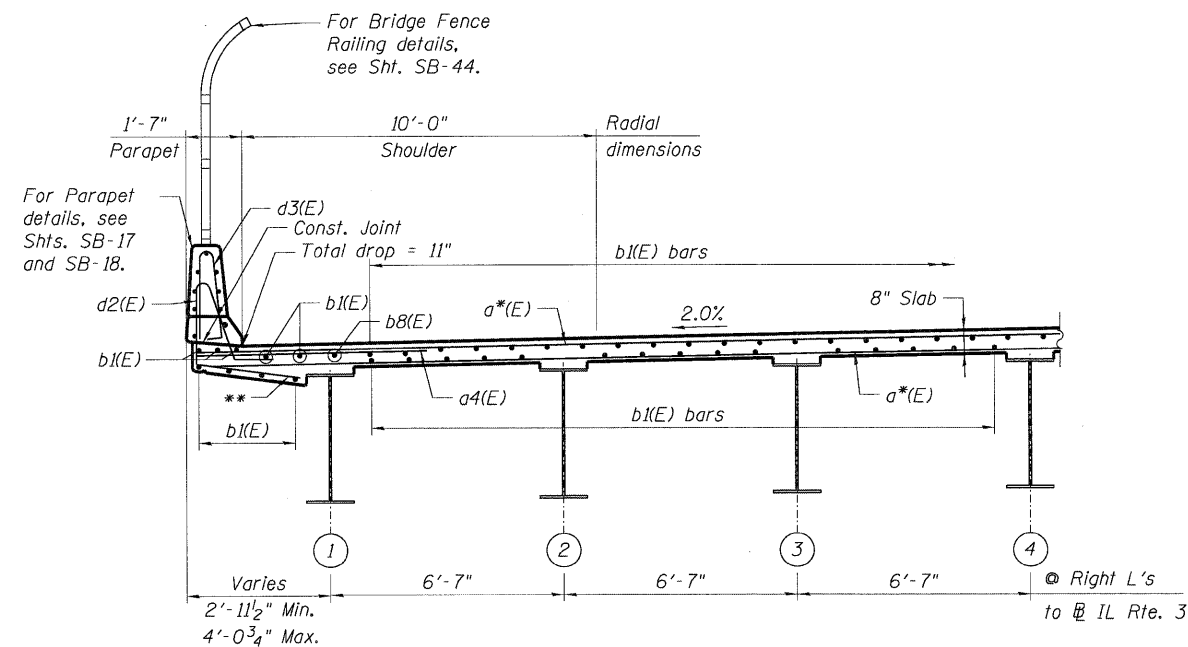
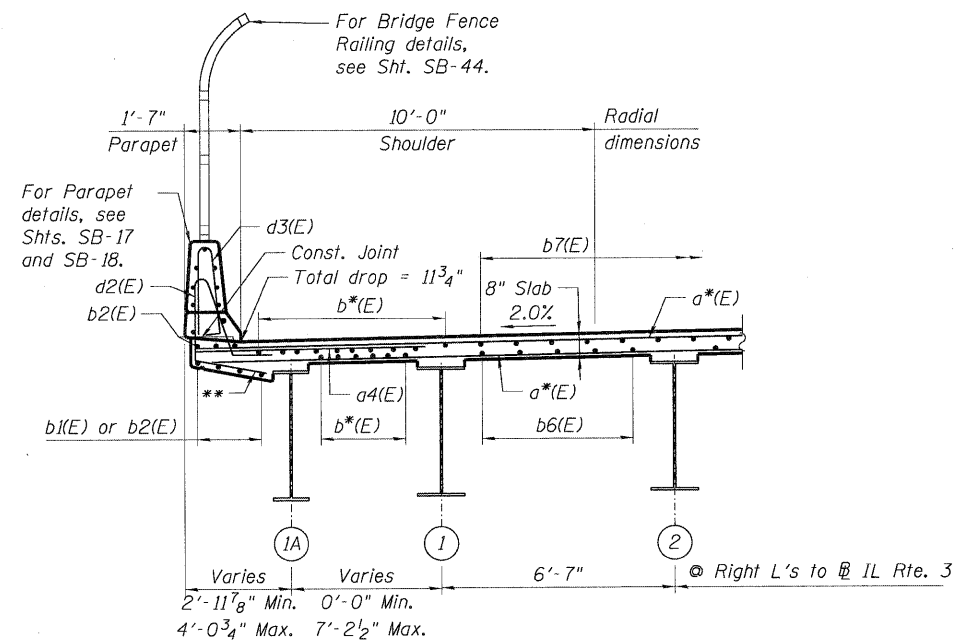


SECTION A-A
(Sta. 1677+20.50 to Sta. 1680+78.25)



SECTION B-B
(Sta. 1680+78.25 to Sta. 1680+99.11)



SECTION C-C
(Sta. 1680+99.11 to Sta. 1681+39.47)

- Notes:**
1. For scupper spacing, see Sheet SB-10.
 2. For Deck details and Bar List, see Sheets SB-18 & SB-19.
 3. For section A-A, B-B and C-C locations, see Sheets SB-10 thru SB-12.

* For bar designation, see deck plans.
** Cut bar to fit if required.

FILE NAME = USER NAME = #USER* DESIGNED - JLR REVISED - DRAWN - FD REVISED - CHECKED - JRH REVISED - DATE - 05/13/11 REVISED -
 10820329 CONN-10-001-SULDON... 10820329 CONN-10-001-SULDON... 10820329 CONN-10-001-SULDON... 10820329 CONN-10-001-SULDON... 10820329 CONN-10-001-SULDON...
 TENG & ASSOCIATES, INC. ENGINEERS/ARCHITECTS/PLANNERS CHICAGO, ILLINOIS

STATE OF ILLINOIS DEPARTMENT OF TRANSPORTATION IL 3 OVER TRRA & ST. CLAIR AVENUE		DECK CROSS SECTIONS		F.A.P. RTE. 998	SECTION 82-2-1HVB-1	COUNTY ST. CLAIR	TOTAL SHEETS 345	SHEET NO. 205
SCALE:		SHEET NO. SB-13 OF SB-63		STA. 1679+16.65 TO STA.		CONTRACT NO. 76D05		FED. ROAD DIST. NO. ILLINOIS FED. AID PROJECT