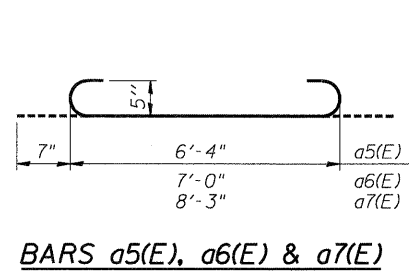
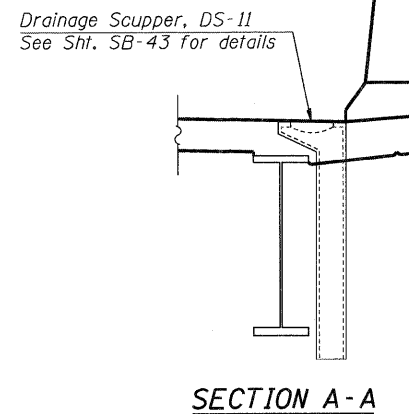
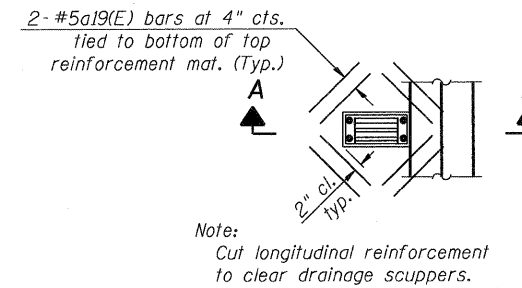
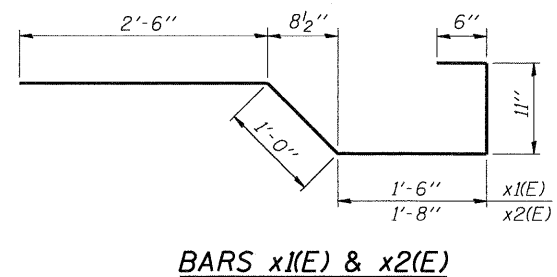


BAR LIST

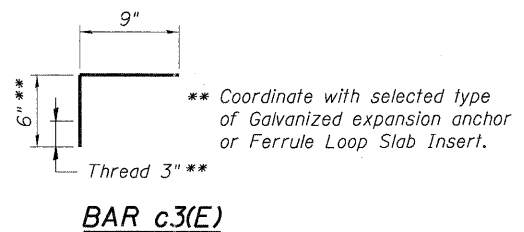
Bar	No.	Size	Length	Shape
a1(E)	1204	#5	30'-0"	—
a2(E)	719	#5	37'-3"	—
a3(E)	464	#5	36'-8"	—
a4(E)	1594	#6	6'-6"	—
a5(E)	27	#5	7'-6"	—
a6(E)	27	#5	8'-2"	—
a7(E)	3	#5	9'-5"	—
a8(E)	10	#5	33'-8"	—
a9(E)	10	#5	42'-4"	—
a10(E)	32	#5	31'-10"	—
a11(E)	19	#5	34'-7"	—
a12(E)*	10	#5	36'-8"	—
a13(E)*	11	#5	32'-11"	—
a14(E)	52	#5	39'-0"	—
a15(E)	26	#5	41'-0"	—
a16(E)*	14	#5	30'-0"	—
a17(E)*	12	#5	58'-2"	—
a18(E)*	9	#5	18'-6"	—
a19(E)	56	#5	1'-6"	—
a20(E)*	3	#6	8'-5"	—
b1(E)	1853	#5	30'-0"	—
b2(E)	74	#5	20'-0"	—
b3(E)	130	#6	36'-0"	—
b4(E)	260	#6	28'-7"	—
b5(E)*	14	#5	40'-0"	—
b6(E)*	8	#5	16'-8"	—
b7(E)*	30	#5	32'-6"	—
b8(E)	4	#5	25'-0"	—
b9(E)*	7	#5	32'-9"	—
c1(E)	399	#5	13'-7"	—
c2(E)*	3	#5	13'-7"	—
c3(E)	802	#5	1'-3"	—
x1(E)	54	#5	6'-5"	—
x2(E)	61	#5	6'-7"	—
d1(E)	815	#5	7'-6"	—
d2(E)	69	#5	8'-8"	—
d3(E)	893	#5	5'-7"	—
e1(E)	190	#4	19'-8"	—
e2(E)	59	#4	15'-0"	—
e3(E)	21	#4	17'-7"	—
e4(E)	21	#4	13'-11"	—
e5(E)	8	#8	19'-8"	—
e6(E)	7	#8	34'-10"	—
e7(E)	9	#8	39'-0"	—
e8(E)	3	#8	41'-1"	—
e9(E)	20	#4	30'-0"	—
e10(E)	2	#4	10'-7"	—
e11(E)	3	#4	22'-3"	—
e12(E)	18	#4	17'-1"	—
e13(E)	4	#4	14'-7"	—
e14(E)	3	#4	16'-8"	—



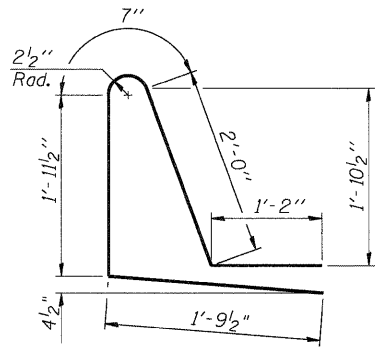
BARS a5(E), a6(E) & a7(E)



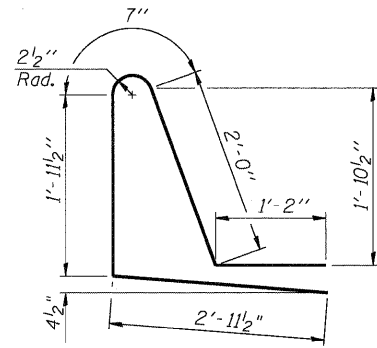
BARS x1(E) & x2(E)



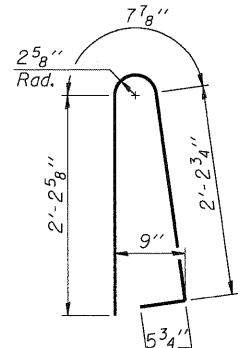
BAR c3(E)



BAR d1(E)



BAR d2(E)

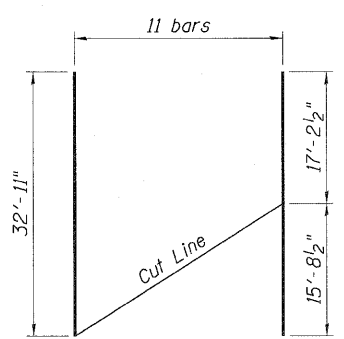


BAR d3(E)

TABLE

Bar	A	B	C	D	N
a12(E)	17'-6"	19'-2"	1'-5"	35'-3"	10***
a16(E)	14'-7"	15'-5"	8"	29'-4"	14***
a17(E)	28'-7"	29'-7"	18'-1"	40'-1"	12
a18(E)	8'-9 1/2"	9'-8 1/2"	1'-4"	17'-2"	9
a20(E)	3'-9"	4'-8"	1'-11"	6'-6"	3
b5(E)	20'-0"	20'-0"	11'-5"	28'-7"	14
b6(E)	7'-10"	8'-10"	4'-4"	12'-4"	8
b7(E)	16'-0"	16'-6"	2'-6"	30'-0"	30
b9(E)	13'-4"	19'-5"	16'-2"	16'-7"	7
c2(E)	5'-8 1/2"	7'-10 1/2"	1'-5"	12'-2"	3

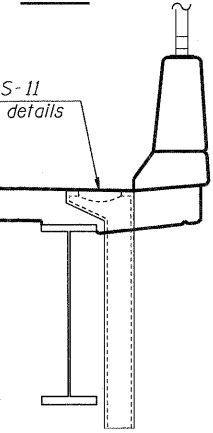
BARS a12(E), a16(E), a17(E), a18(E), a20(E), b5(E), b6(E), b7(E), b9(E) & c2(E)



BAR a13(E)***

*** After cutting discard the shortest bar(s) in set as required.

PLAN



SECTION A-A

Notes:
1. Reinforcement bars designated (E) shall be epoxy coated.

BILL OF MATERIAL

Item	Unit	Total
Concrete Superstructure	Cu. Yd.	894.5
Reinforcement Bars, Epoxy Coated	Pound	213,500
Bridge Deck Grooving	Sq. Yd.	1,977
Protective Coat	Sq. Yd.	3,152
Name Plates	Each	1

FILE NAME = USER NAME = #USER* DESIGNED - JLR REVISED - DRAWN - FD REVISED - CHECKED - JRH REVISED - DATE - 05/13/11 REVISED -
 TENG & ASSOCIATES, INC. ENGINEERS/ARCHITECTS/PLANNERS CHICAGO, ILLINOIS
 STATE OF ILLINOIS DEPARTMENT OF TRANSPORTATION IL 3 OVER TRRA & ST. CLAIR AVENUE
 DECK BAR LIST
 F.A.P. RTE. 998 SECTION 82-2-1HVB-1 COUNTY ST. CLAIR TOTAL SHEETS 345 SHEET NO. 211
 SN 082-0329 CONTRACT NO. 76D05
 SCALE: SHEET NO. SB-19 OF SB-63 STA. 1679+16.65 TO STA. FED. ROAD DIST. NO. ILLINOIS FED. AID PROJECT