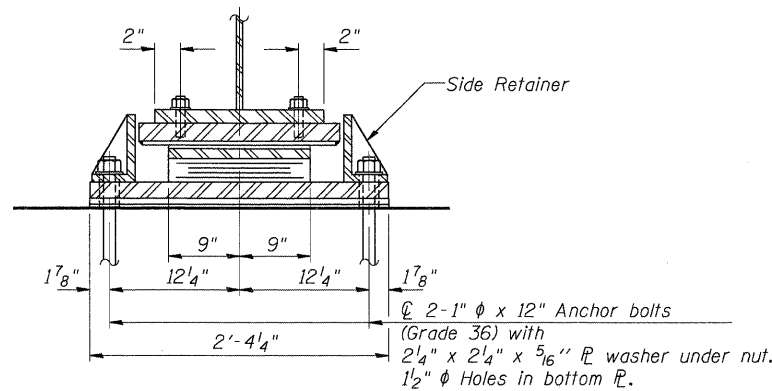
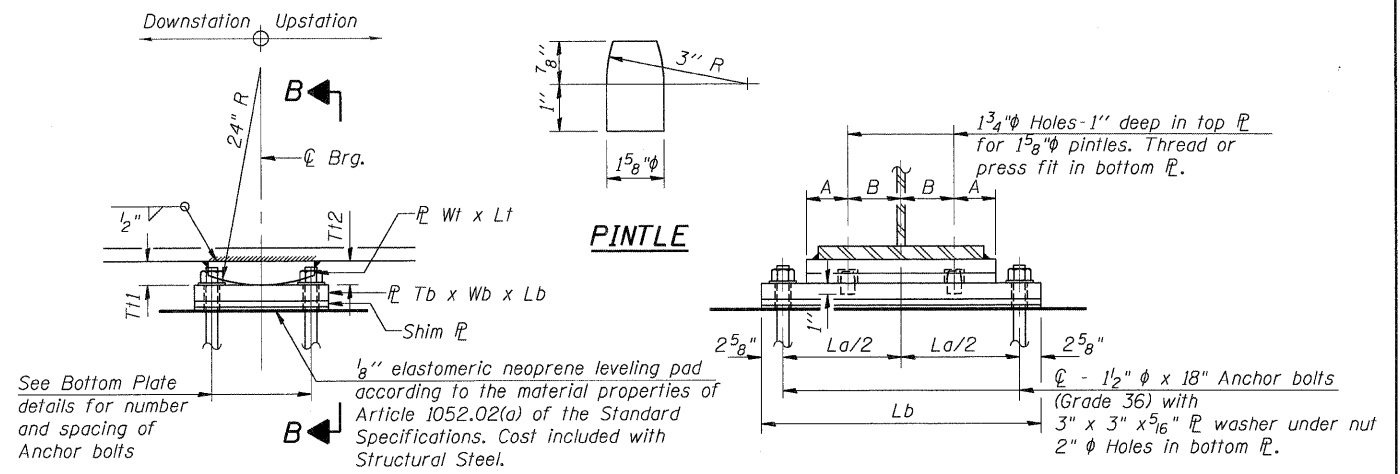


ELEVATION AT ABUT.



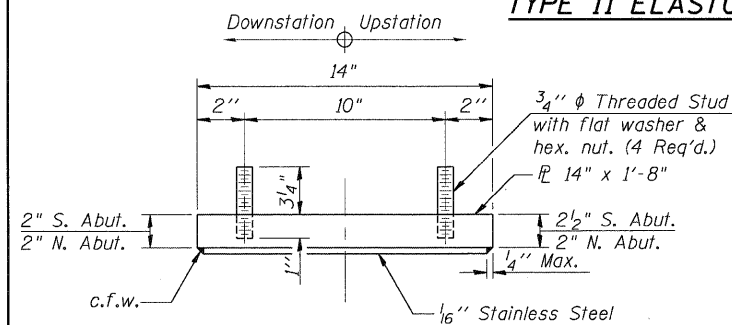
SECTION A-A



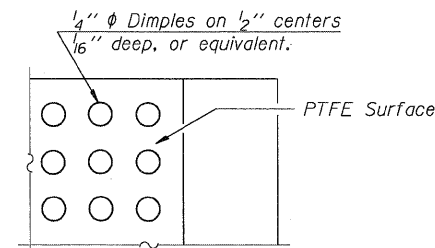
ELEVATION AT PIER

SECTION B-B

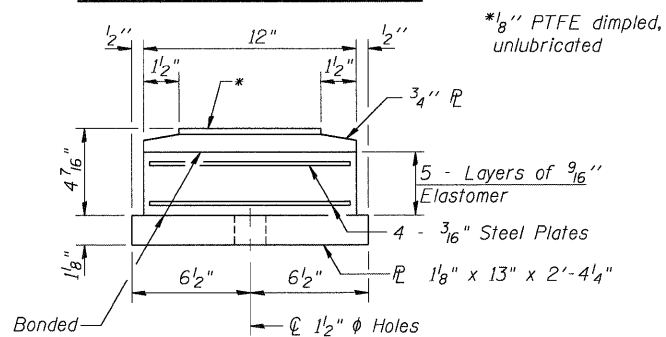
TYPE II ELASTOMERIC EXP. BRG.



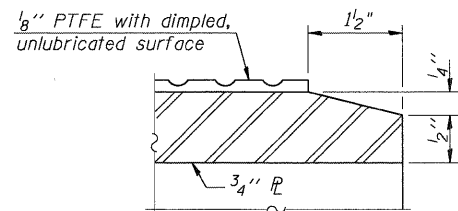
TOP BEARING ASSEMBLY



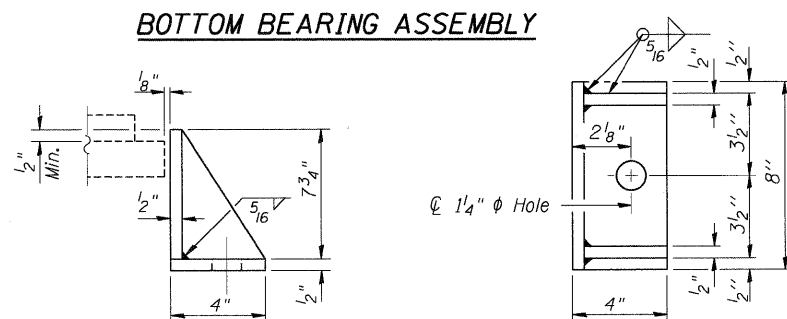
PLAN-PTFE SURFACE



BOTTOM BEARING ASSEMBLY

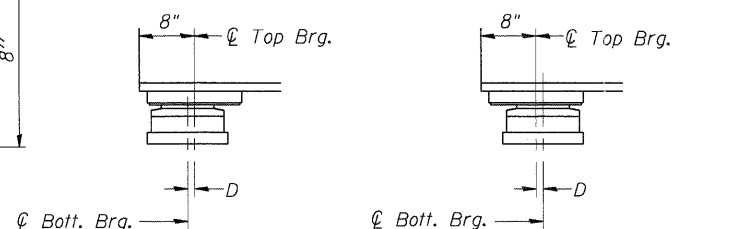


SECTION THRU PTFE



SIDE RETAINER

Equivalent rolled angle with stiffeners will be allowed in lieu of welded plates.



BELOW 50°F.

ABOVE 50°F.

(Move bott. brg. away from fixed brg.) (Move bott. brg. toward fixed brg.)

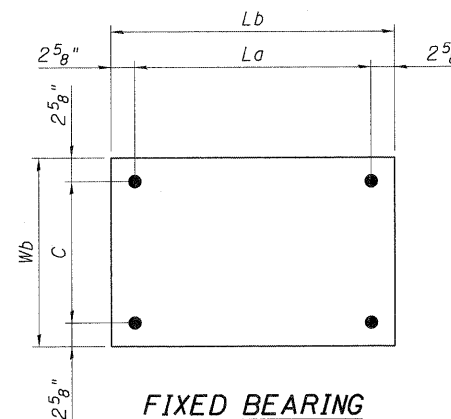
SETTING ANCHOR BOLTS AT EXP. BRG.

D=8" per each 100' of expansion for every 15° temp. change from the normal temp. of 50°F.

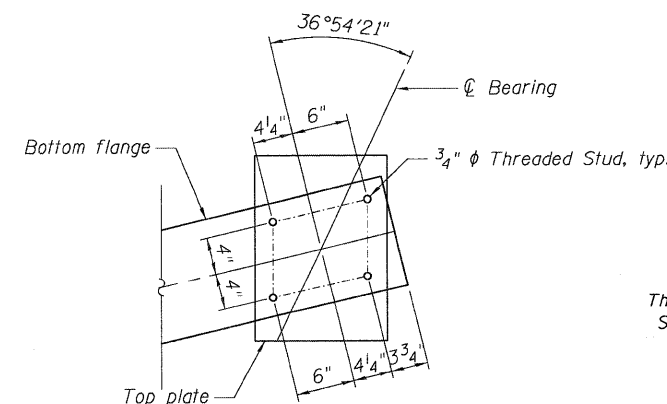
FIXED BEARINGS AT PIERS

BEARING DIMENSIONS AT PIERS 1 & 2

| Bearing Location | T11 | T12 | Wt | Lt | A | B | Tb | Wb | Lb | La | C |
|------------------|--------|-----|----|-----------|--------|----|--------|---------|-----------|-----------|--------|
| Girders 1-3 | 1 3/4" | 2" | 9" | 1'-9 1/2" | 5 3/4" | 5" | 2 3/8" | 14 1/2" | 2'-6 3/4" | 2'-1 1/2" | 9 1/4" |
| Girders 4-10 | 1 3/4" | 2" | 9" | 1'-5 1/2" | 4 3/4" | 4" | 2 3/8" | 16 1/4" | 2'-2 3/4" | 1'-9 1/2" | 11" |



FIXED BEARING BOTTOM PLATE



GIRDER 1A

TOP BEARING PLATE DETAIL

NOTES:

- Anchor bolts shall be ASTM F1554 all-thread (or an Engineer-approved alternate material) of the grade(s) and diameter(s) specified. ASTM A307 Grade C anchor bolts may be used in lieu of ASTM F1554 Grade 36 (Fy=36ksi). The corresponding specified grade of AASHTO M314 anchor bolts may be used in lieu of ASTM F1554.
 - Anchor bolts for Type II bearings shall be placed in holes drilled in the concrete through holes in the bottom bearing plate after members are in place. Side retainers shall be placed after bolts are installed.
 - Drilled and set anchor bolts shall be installed according to Article 521.06 of the Standard Specifications.
 - Side retainers and other steel members required for the elastomeric bearing assembly shall be included in the cost of Elastomeric Bearing Assembly, Type II.
 - The 1/8" PTFE sheet shall be bonded directly to the top steel plate with a two-component, medium viscosity epoxy resin, conforming to the requirements of the Federal Specification MMM-A-134, Type I. The bond agent shall be applied on the full area of the contact surfaces.
 - Bonding of 1/8" PTFE sheet during vulcanizing process will be permitted provided the process and method of adjusting assembly height is approved by the Engineer.
 - The structural steel plates of the fixed bearing assemblies shall conform to the requirements of AASHTO M 270 Grade 50.
 - Two 1/8" adjusting shims shall be provided for each bearing in addition to all other plates or shims and placed as shown on bearing details.
 - Bearings for Girder B shall be installed with 3/8" shims at South Abutment and Pier 1 and with 1/2" shim at North Abutment. Shims shall be adjusted if bearing seats are constructed higher or lower than shown on substructure sheets.
- The anchor bolt sizes and grades shown constitute a calculated structural fuse. Substitution of higher anchor bolt diameters and/or grades will not be allowed.

BILL OF MATERIAL

| Item | Unit | Total |
|--------------------------------------|------|-------|
| Elastomeric Bearing Assembly Type II | Each | 21 |
| Anchor Bolts, 1" | Each | 42 |
| Anchor Bolts, 1 1/2" | Each | 80 |

082910 CON-99-001-BRDJDN \\FS-004\YAM\VAL\J.D. TRANS. 07-22\02-20666-000\STRUCT\CD\DR\ DESIGN\082910\5\082910-CON-10-001-SHT-BRDJDN
 5-11-2011 9:56:52 TENG & ASSOCIATES, INC. ENGINEERS/ARCHITECTS/PLANNERS CHICAGO, ILLINOIS