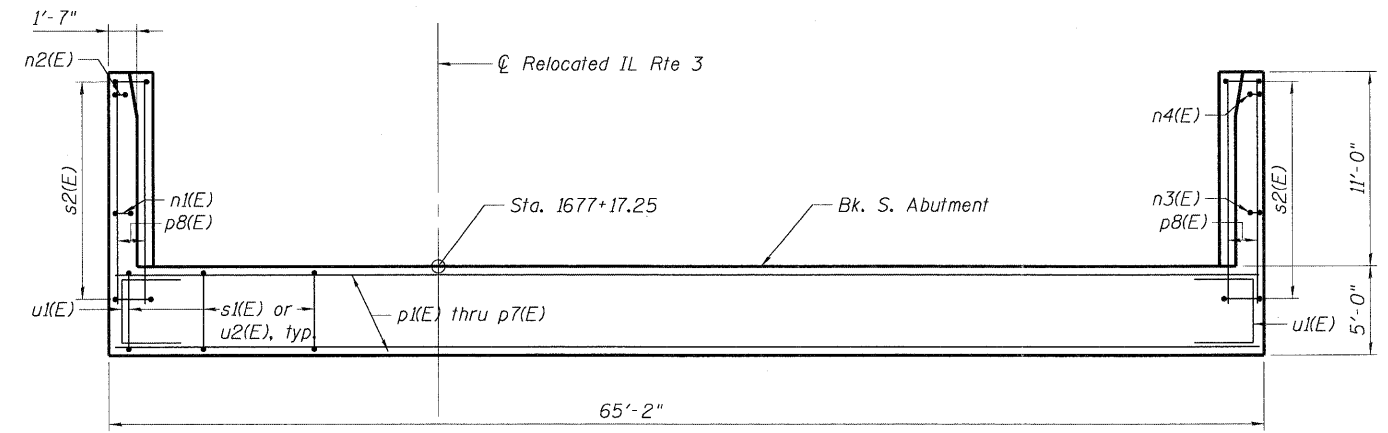
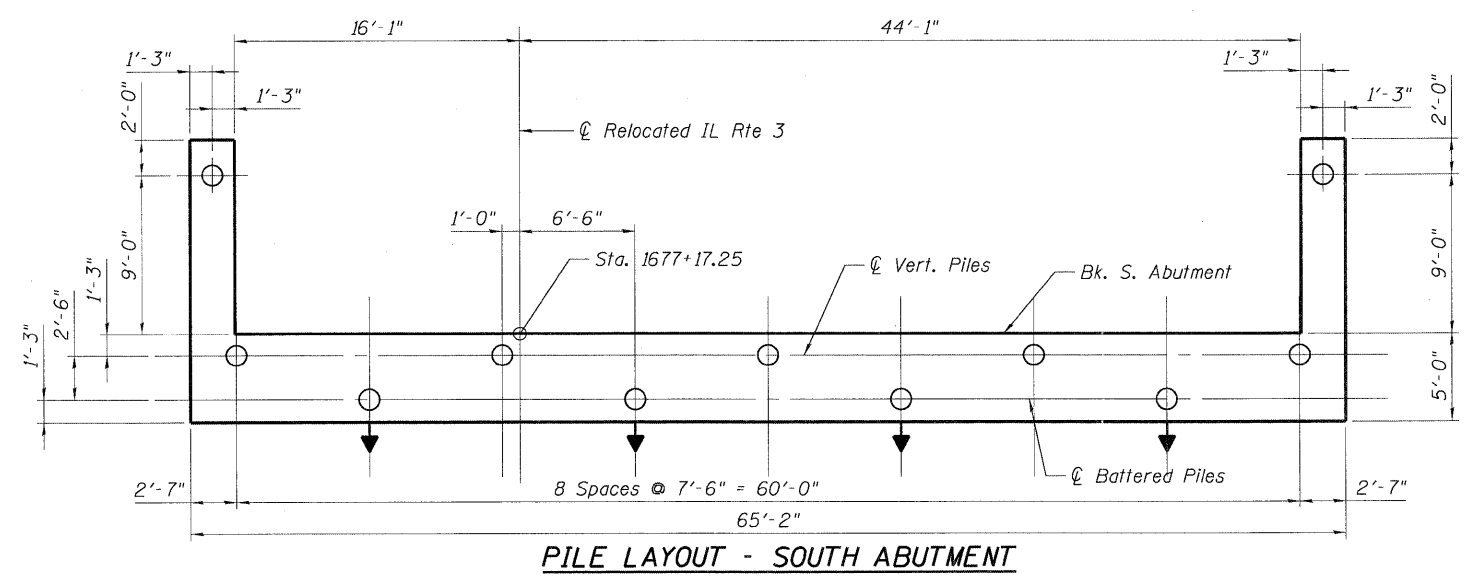


TOP VIEW



PLAN - SOUTH ABUTMENT CAP

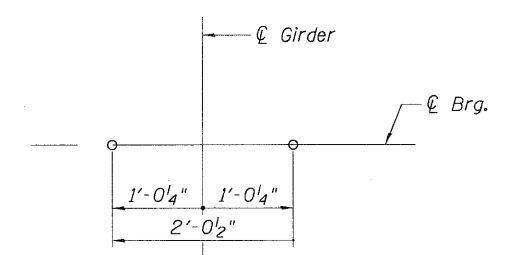


PILE LAYOUT - SOUTH ABUTMENT

BEARING SEAT ELEVATIONS

Girder	Elevations
1	435.78
2	435.91
3	436.04
4	436.17
5	436.30
6	436.43
7	436.57
8	436.57
9	436.47
10	436.34

*Bearing at Girder 8 shall be installed with $\frac{3}{8}$ " shim. Adjust $\frac{3}{8}$ " shim if bearing seat is constructed higher or lower than shown above.



ANCHOR BOLT LAYOUT

PILE DATA

Type: MS14X0.25 Metal Shell Piles
 Nominal Required Bearing: 413 kips/pile
 Factored Resistance Available: 227 kips/pile
 Est. Length: 87 ft
 No. Production Piles: 10
 No. Test Piles: 1

NOTES:

- Hatched area of abutment backwall to be poured after superstructure forms have been removed. Quantity of concrete included with Concrete Superstructure.
- For Anchor Bolt and Bearing details, see Sht. SB-29.
- ➔ Indicates battered pile.
- For details of piles, see Sht. SB-45.
- Space reinforcement in cap to miss anchor bolts.
- Pour steps monolithically with cap.

FILE NAME = ... USER NAME = SUSERS ... DESIGNED - MDJ ... REVISIONS ... DRAWN - MDJ ... CHECKED - JLR ... DATE - 05/13/11 ... PLOT SCALE = ... PLOT DATE = ...



STATE OF ILLINOIS
DEPARTMENT OF TRANSPORTATION
 IL 3 OVER
 TRRA & ST. CLAIR AVENUE

SOUTH ABUTMENT
PLAN & PILE LAYOUT

SCALE: SHEET NO. SB-30 OF SB-63 STA. 1679+16.65 TO STA.

F.A.P. RTE.	SECTION	COUNTY	TOTAL SHEETS	SHEET NO.
998	82-2-1HVB-1	ST. CLAIR	345	222
SN 082-0329		CONTRACT NO. 76D05		
FED. ROAD DIST. NO.		ILLINOIS FED. AID PROJECT		