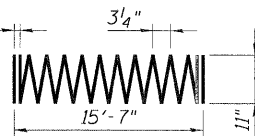


Provide 1/2 extra turns
shop welded together per
AWS D1.4 top and bottom.

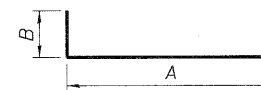


Length = 554'-9"
BAR sp20(E)

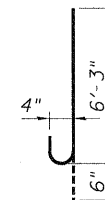
(For information only - length calculated
as continuous bar ignoring splices)

A & B DIMENSIONS

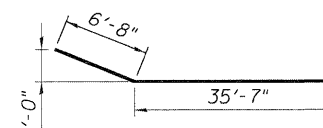
Bar	A	B
n20(E)	24'-4"	1'-7"
s24(E)	8'-11"	8"



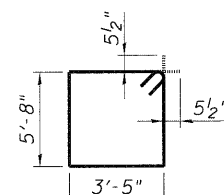
BARS n20(E) & s24(E)



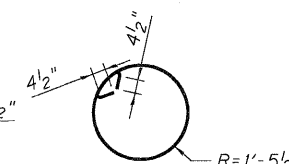
BAR n21(E)



BAR p21(E)



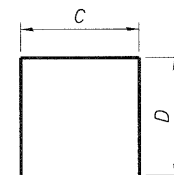
BAR s20(E)



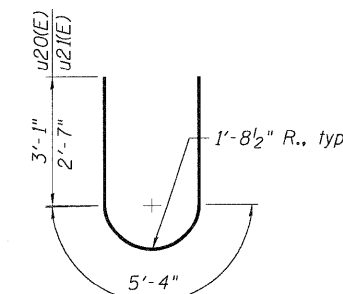
BAR s25(E)

C & D DIMENSIONS

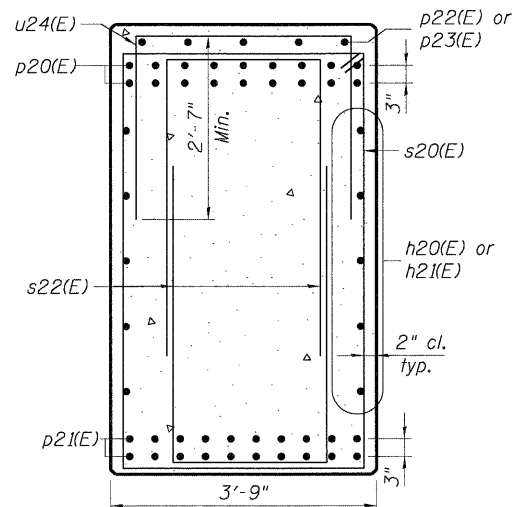
Bar	C	D
s21(E)	3'-5"	4'-2"
s22(E)	2'-2"	4'-2"
s23(E)	3'-5"	2'-1"
u22(E)	3'-11"	2'-11"
u23(E)	4'-1"	2'-11"
u24(E)	3'-1"	2'-0"



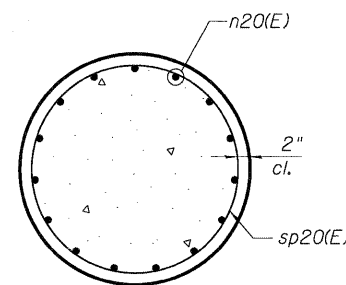
BARS s21(E), s22(E), s23(E), u22(E), u23(E) & u24(E)



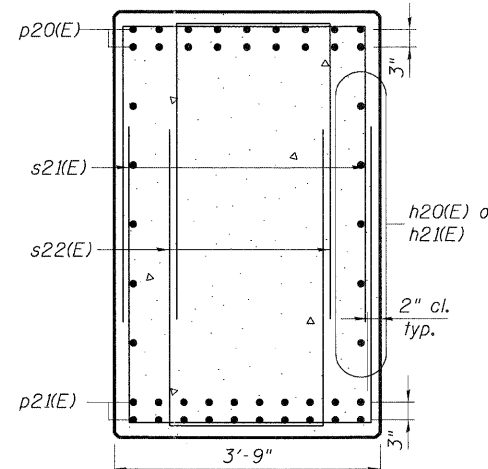
BAR u20(E) & u21(E)



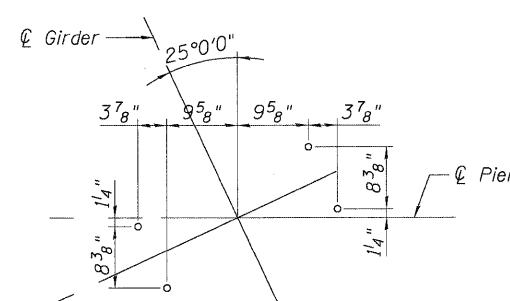
SECTION A-A



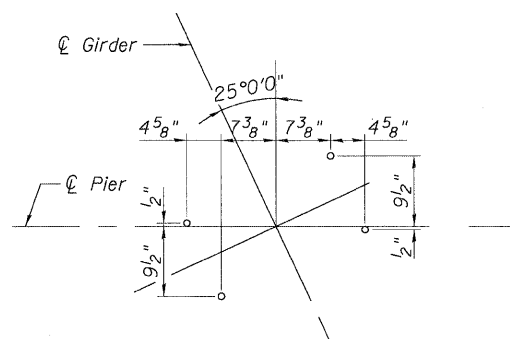
SECTION B-B



SECTION C-C



ANCHOR BOLT LAYOUT
(Girder 1-3)



ANCHOR BOLT LAYOUT
(Girder 4-10)

**PIER 2
BAR LIST**

Bar	No.	Size	Length	Shape
h20(E)	20	#6	30'-0"	—
h21(E)	10	#6	16'-2"	—
h22(E)	34	#6	31'-6"	—
h23(E)	12	#5	36'-2"	—
h24(E)	6	#5	11'-8"	—
n20(E)	75	#9	25'-11"	U
n21(E)	10	#4	6'-9"	U
p20(E)	36	#10	41'-2"	—
p21(E)	40	#10	42'-3"	—
p22(E)	5	#5	30'-0"	—
p23(E)	5	#5	16'-3"	—
s20(E)	91	#5	19'-1"	□
s21(E)	32	#5	11'-9"	□
s22(E)	212	#5	10'-6"	□
s23(E)	40	#4	7'-7"	□
s24(E)	80	#4	9'-7"	□
s25(E)	40	#4	10'-7"	○
sp20(E)	5	#4	15'-7"	—
t20(E)	143	#8	11'-8"	—
u20(E)	15	#6	11'-6"	U
u21(E)	14	#5	10'-6"	U
u22(E)	26	#5	9'-9"	□
u23(E)	142	#5	9'-11"	□
u24(E)	66	#5	7'-1"	□
v20(E)	10	#4	4'-10"	—
w20(E)	54	#5	36'-8"	—

**

** Length is the height of the spiral

**PIER 2
BILL OF MATERIAL**

Item	Unit	Total
Concrete Structures	Cu. Yd.	271.2
Reinforcement Bars, Epoxy Coated	Pound	40,380
Furnishing Metal Shell Piles 14"X0.250"	Foot	2,065
Driving Piles	Foot	2,065
Test Pile Metal Shells	Each	1
Structure Excavation	Cu. Yd.	245

FILE NAME = USER NAME = #USER* DESIGNED - MDJ REVISED - DRAWN - MDJ REVISED - CHECKED - JLR REVISED - DATE - 05/13/11 REVISED -
 TENG & ASSOCIATES, INC. ENGINEERS/ARCHITECTS/PLANNERS CHICAGO, ILLINOIS
 STATE OF ILLINOIS DEPARTMENT OF TRANSPORTATION IL 3 OVER TRRA & ST. CLAIR AVENUE
 F.A.P. RTE. SECTION COUNTY TOTAL SHEETS SHEET NO. 998 82-2-1HVB-1 ST. CLAIR 345 229 SN 082-0329 CONTRACT NO. 76D05
 SCALE: SHEET NO. SB-37 OF SB-63 STA. 1679+16.65 TO STA. FED. ROAD DIST. NO. ILLINOIS FED. AID PROJECT