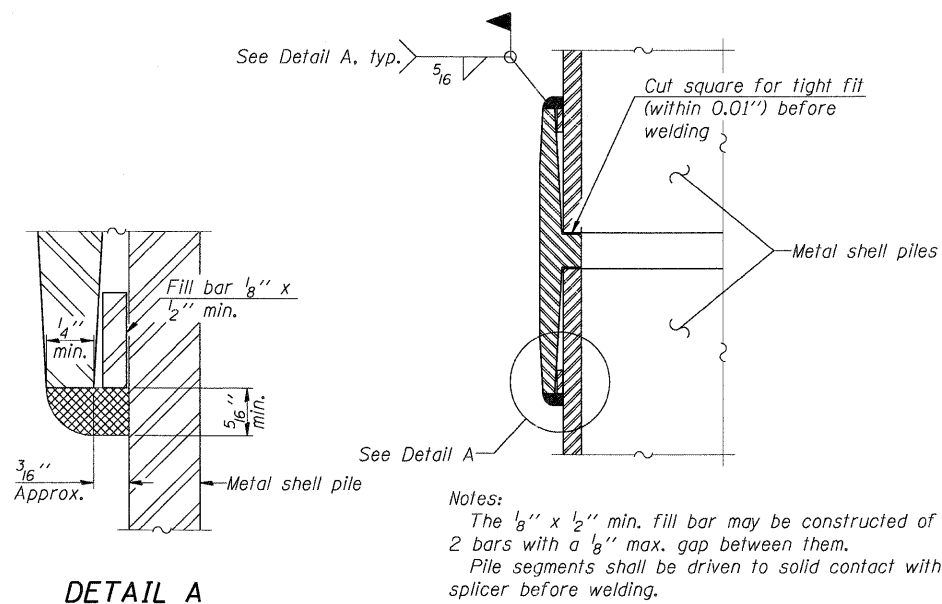


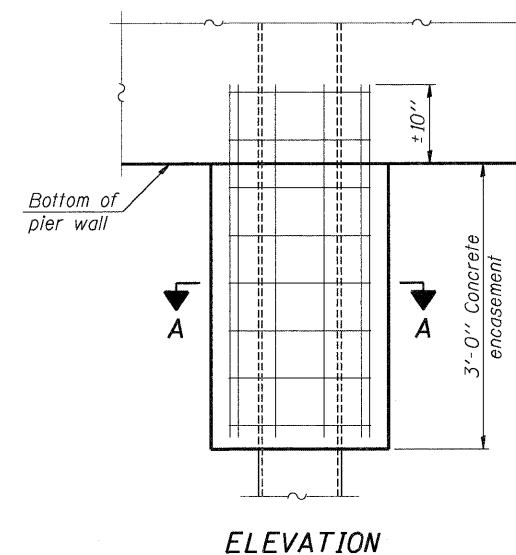
METAL SHELL PILE TABLE

Designation and outside diameter	Wall thickness t	Weight per foot (Lbs./ft.)	Inside volume (yd. ³ /ft.)
PP12	0.179"	22.60	0.0274
PP12	0.250"	31.37	0.0267
PP14	0.250"	36.71	0.0368
PP14	0.312"	45.61	0.0361

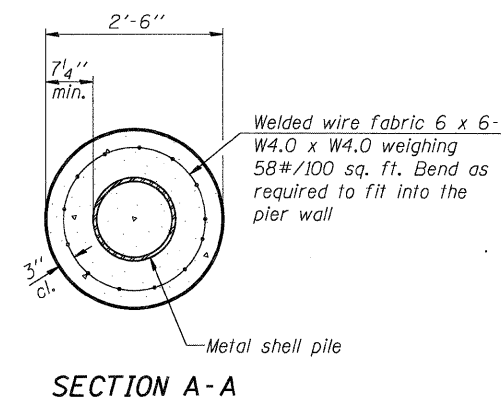


Notes:
 The 1/8" x 1/2" min. fill bar may be constructed of 2 bars with a 1/8" max. gap between them.
 Pile segments shall be driven to solid contact with splicer before welding.

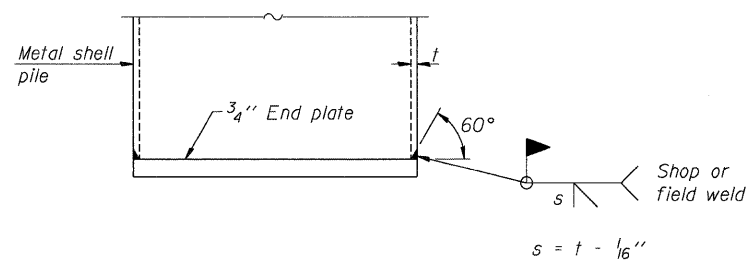
WELDED COMMERCIAL SPLICE



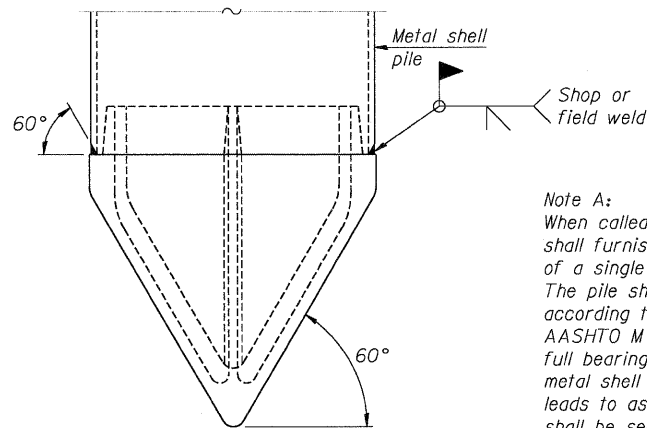
CONCRETE ENCASEMENT



Note:
 Forms for encasement may be omitted when soil conditions permit.



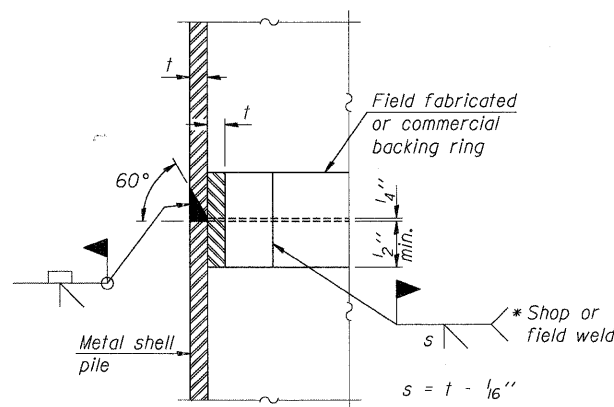
END PLATE ATTACHMENT



Note A:
 When called for on the plans, the Contractor shall furnish metal shell pile shoes consisting of a single piece conical pile point as shown. The pile shoes shall be cast in one piece steel according to either ASTM A 148 Grade 90-60 or AASHTO M 103 Grade 65-35 and shall provide full bearing over the full circumference of the metal shell pile. The pile shoe shall have tapered leads to assure proper alignment and fitting and shall be secured to the pile with a circumferential weld.

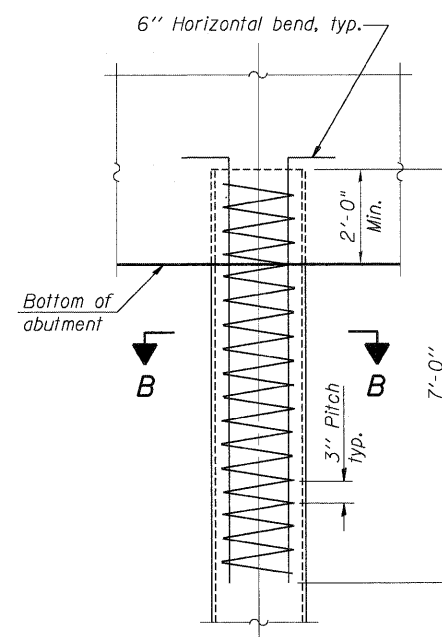
METAL SHELL PILE SHOE ATTACHMENT

(See Note A)

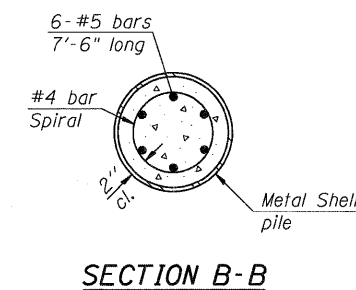


COMPLETE PENETRATION WELD SPLICE

* Field fabricated backing ring may be made from pile shell by removing segment to allow reducing circumference and vertically rejoin with partial joint penetration weld.



METAL SHELL REINFORCEMENT AT ALL SUBSTRUCTURES



Note:
 The metal shell piles shall be according to ASTM A 252 Grade 3.

\\FS-0644\AMV\VALI.TD-TRANS.07\2282\28868-001\STRUCT\CAD\01 DESIGN\082032\ASHEET\082032.dwg CONN-10-002-SHT-M5.DWG
 5-11-2011 9:57:44
 TENG & ASSOCIATES, INC. ENGINEERS/ARCHITECTS/PLANNERS CHICAGO, ILLINOIS
 FILE NAME = USER NAME = #USER# DESIGNED - REVISIONS -
 #FILE# DRAWN - TCG REVISIONS -
 PLOT SCALE = #SCALE# CHECKED - JLR REVISIONS -
 PLOT DATE = #DATE# DATE - 05/13/11 REVISIONS -

TENG TENG & ASSOCIATES, INC. ENGINEERS/ARCHITECTS/PLANNERS CHICAGO, ILLINOIS		STATE OF ILLINOIS DEPARTMENT OF TRANSPORTATION IL 3 OVER TRRA & ST. CLAIR AVENUE		METAL SHELL PILE DETAILS		F.A.P. RTE. SECTION COUNTY TOTAL SHEETS SHEET NO. 998 82-2-1HVB-1 ST. CLAIR 345 237	
SCALE:		SHEET NO. SB-45 OF SB-63		STA. 1679+16.65 TO STA.		SN 082-0329 CONTRACT NO. 76D05 FED. ROAD DIST. NO. ILLINOIS FED. AID PROJECT	