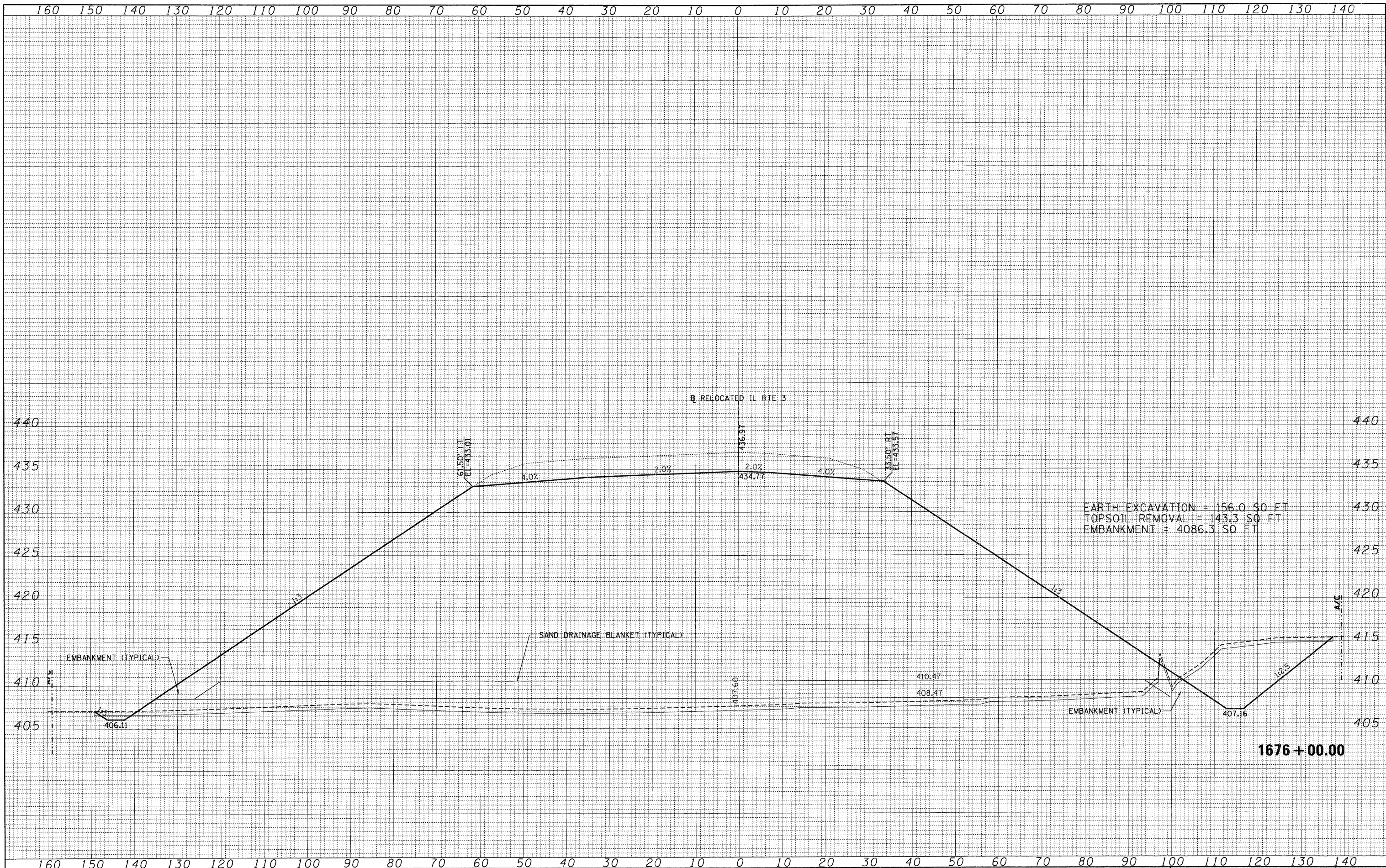


DATE	
BY	
SURVEYED	
PLOTTED	
TEMPLATE	
AREAS	
CHECKED	
NO.	

DATE	
BY	
SURVEYED	
PLOTTED	
TEMPLATE	
AREAS	
CHECKED	
NO.	



EARTH EXCAVATION = 156.0 SQ FT
 TOPSOIL REMOVAL = 143.3 SQ FT
 EMBANKMENT = 4086.3 SQ FT

FILE NAME =	USER NAME = *USER*	DESIGNED - JB	REVISED -	STATE OF ILLINOIS DEPARTMENT OF TRANSPORTATION	CROSS SECTIONS RELOCATED IL ROUTE 3			F.A. RTE.	SECTION	COUNTY	TOTAL SHEETS	SHEET NO.		
FILE		DRAWN - AG	REVISED -		SCALE:	SHEET NO.	OF	SHEETS	STA. 1676+00.00 TO STA. 1676+00.00	998	82-2-1HVB-1	ST. CLAIR	345	318
		CHECKED - ACL	REVISED -											
		DATE - 05/13/11	REVISED -											
											CONTRACT NO. 76D05		ILLINOIS FED. AID PROJECT	