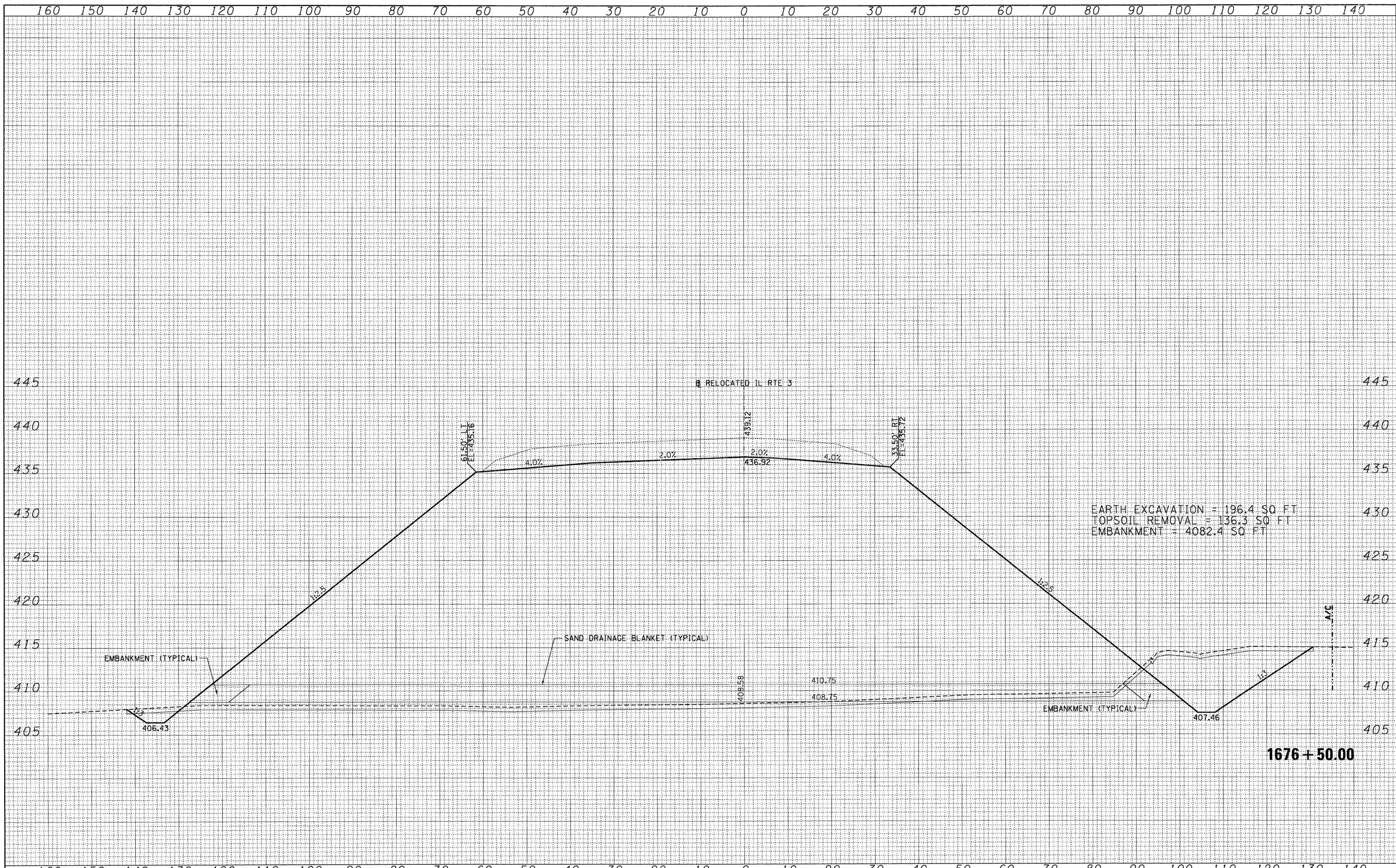


DATE	
BY	
REVISIONS	
NO.	
DATE	
BY	
REVISIONS	
NO.	
DATE	
BY	
REVISIONS	
NO.	
DATE	
BY	
REVISIONS	
NO.	

DATE	
BY	
REVISIONS	
NO.	
DATE	
BY	
REVISIONS	
NO.	
DATE	
BY	
REVISIONS	
NO.	



EARTH EXCAVATION = 196.4 SQ FT
 TOPSOIL REMOVAL = 136.3 SQ FT
 EMBANKMENT = 4082.4 SQ FT

1676 + 50.00

FILE NAME =	USER NAME = *USER*	DESIGNED - JB	REVISED -	STATE OF ILLINOIS DEPARTMENT OF TRANSPORTATION	CROSS SECTIONS RELOCATED IL ROUTE 3			F.A. RTE. 998	SECTION 82-2-1HVB-1	COUNTY ST. CLAIR	TOTAL SHEETS 345	SHEET NO. 319
#FILE#	PLOT SCALE = *SCALE*	DRAWN - AG	REVISED -		SCALE:	SHEET NO.	OF	SHEETS	STA. 1676+50.00 TO STA. 1676+50.00	CONTRACT NO. 76D05		
	PLOT DATE = *DATE*	CHECKED - ACL	REVISED -		ILLINOIS FED. AID PROJECT							
		DATE - 05/13/11	REVISED -									