

F.A.P. RTE.	SECTION	COUNTY	TOTAL SHEETS	SHEET NO.
869	101RS-5	FRANKLIN	16	1
		ILLINOIS	CONTRACT NO. 78247	

STATE OF ILLINOIS
DEPARTMENT OF TRANSPORTATION
DIVISION OF HIGHWAYS

PROPOSED HIGHWAY PLANS

ROUTE: IL 34 (FAP 869)
SECTION: 101RS-5
PROJECT F-0869(040)
TYPE of IMPROVEMENT: RESURFACING
FRANKLIN COUNTY

C-99-034-11

FOR INDEX OF SHEETS, SEE SHEET NO. 3
FOR SUMMARY OF QUANTITIES, SEE SHEET NO. 5

ADT (2011)
PV = 6463
MU = 77
SU = 258
TRUCKS = 5.2%

EQUATION STATIONS:
EQ. STA. 926+09.7 (BK) = STA. 926+12.3 (A.H.)
EQ. STA. 948+33 (BK) = STA. 0+00 (A.H.)
EQ. STA. 50+10.4 (BK) = STA. 50+00 (A.H.)

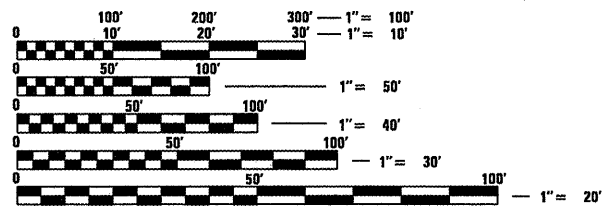
OMISSIONS:
STA. 42+93.96 TO STA. 48+40.65

TOWNSHIP - BENTON

PROJECT BEGINS
FAP 869 (IL 34)
STA. 896+22

SN 028-0084
(OMISSION)

PROJECT ENDS
FAP 869 (IL 34)
STA. 66+49

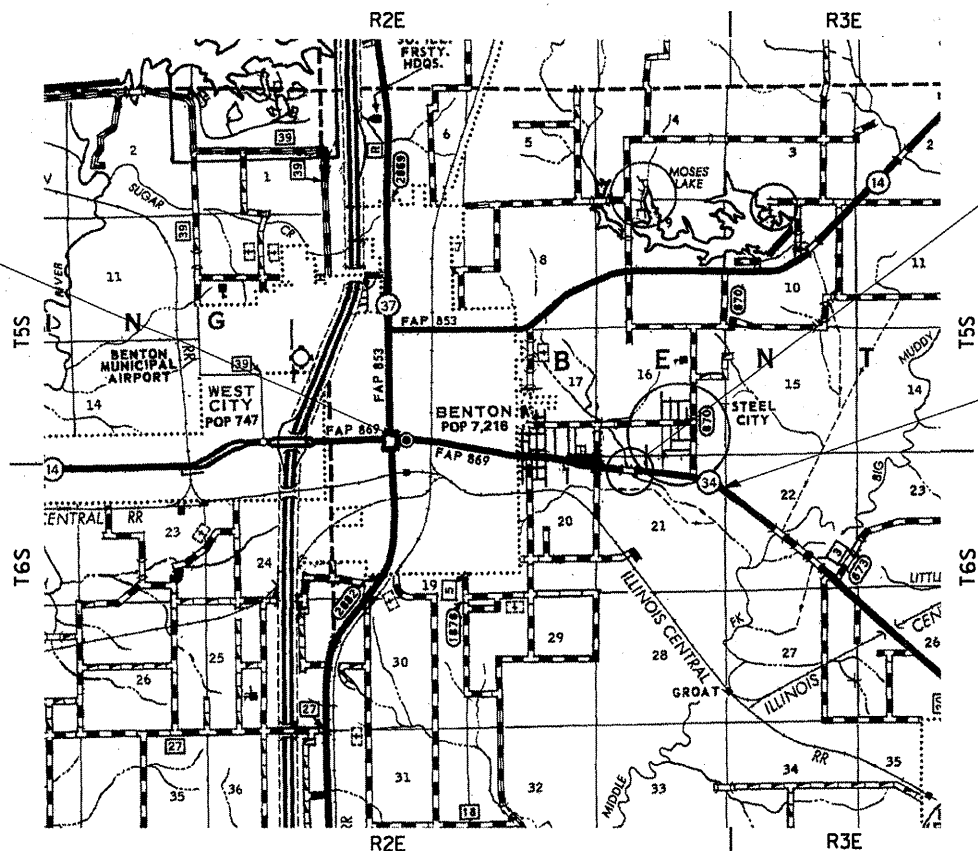


FULL SIZE PLANS HAVE BEEN PREPARED USING STANDARD ENGINEERING SCALES. REDUCED SIZED PLANS WILL NOT CONFORM TO STANDARD SCALES. IN MAKING MEASUREMENTS ON REDUCED PLANS, THE ABOVE SCALES MAY BE USED.

J.U.L.I.E.
JOINT UTILITY LOCATION INFORMATION FOR EXCAVATION
1-800-892-0123
OR 811

PROJECT ENGINEER: CHARLES STEIN 618-351-5210
PROJECT MANAGER: JULIO S. AYBAR 618-351-5215

CONTRACT NO.78247



GROSS LENGTH = 11,867.8 FT. = 2.24 MILES
OMISSION LENGTH = 546.69 FT = .1 MILES
NET LENGTH = 11321.1 FT. = 2.14 MILES
DESIGN DESIGNATION: OTHER PRINCIPAL ARTERIAL



LOCATION OF SECTION INDICATED THIS: -

STATE OF ILLINOIS
DEPARTMENT OF TRANSPORTATION
DIVISION OF HIGHWAYS

SUBMITTED May 6 2011
M. J. Ramis
DEPUTY DIRECTOR OF HIGHWAYS, REGION ENGINEER

July 1 2011
Scott E. Still, P.E.
ENGINEER OF DESIGN AND ENVIRONMENT

July 1 2011
Christine M. Reed
DIRECTOR OF HIGHWAYS, CHIEF ENGINEER

PRINTED BY THE AUTHORITY
OF THE STATE OF ILLINOIS

Prepared By: Joe Zdanfrowicz
DISTRICT STUDIES & PLANS ENGINEER

Examined By: Amos King Emery
DISTRICT LAND ACQUISITION ENGINEER

Examined By: Cornie Nelson
DISTRICT PROGRAM DEVELOPMENT ENGINEER

Examined By: Kell Wiley
DISTRICT OPERATIONS ENGINEER

Examined By: [Signature]
DISTRICT CONSTRUCTION ENGINEER

Examined By: Bruce [Signature]
DISTRICT MATERIALS ENGINEER

Approved By: My C Lami
DEPUTY DIRECTOR OF HIGHWAYS, REGION 5 ENGINEER

DATE May 10 2011

FILE NAME =	USER NAME = aybar-js	DESIGNED -	REVISED -	STATE OF ILLINOIS DEPARTMENT OF TRANSPORTATION	SIGNATURE BLOCK			F.A.P. RTE.	SECTION	COUNTY	TOTAL SHEETS	SHEET NO.
es\pwwork\pwwork\aybar-js\02255677\sh...	an.dgn	DRAWN -	REVISED -		SCALE: _____	SHEET NO. _____ OF _____ SHEETS	STA. _____ TO STA. _____	869	101RS-5	FRANKLIN	16	2
	PLOT SCALE = 100.0000' / IN.	CHECKED -	REVISED -					CONTRACT NO. 78247				
	PLOT DATE = 4/26/2011	DATE -	REVISED -					ILLINOIS FED. AID PROJECT				

INDEX OF SHEETS

SHEET NO.

- 1 COVER SHEET
- 2 SIGNATURE SHEET
- 3 INDEX OF SHEETS, HIGHWAY STANDARDS, GENERAL NOTES
- 4 MIXTURE REQUIREMENTS / STRUCTURE INFORMATION SCHEDULE
- 5 SUMMARY OF QUANTITIES
- 6-8 TYPICAL SECTIONS
- 9 RESURFACING SCHEDULE
- 10 PAVEMENT MARKING SCHEDULE
- 11-14 PLAN LAYOUT FOR FAS 869 (IL34) STA 896+22 TO STA 66+49
- 15 DETAIL: TEMPORARY RAMP, SAFETY EDGE
- 16 STANDARD DETAILS: ROUGH GROOVED SURFACE SIGN; UNEVEN LANES

HIGHWAY STANDARDS

- 000001-06 701336-06
- 442201-03 701901-01
- 701006-03 780001-02
- 701011-02 781001-03
- 701301-04 886001-01
- 701306-03 886006-01
- 701311-03

GENERAL NOTES

THE THICKNESS OF BITUMINOUS MIXTURE SHOWN ON THE PLANS IS THE NOMINAL THICKNESS. DEVIATIONS FROM THE NOMINAL THICKNESS WILL BE PERMITTED WHEN SUCH DEVIATION OCCURS DUE TO IRREGULARITIES IN THE EXISTING SURFACE OR BASE ON WHICH THE BITUMINOUS MIXTURE IS PLACED.

FACTORS USED FOR ESTIMATING PLAN QUANTITIES ARE AS FOLLOWS AND SHALL NOT BE USED FOR THE BASIS OF FINAL QUANTITIES EXCEPT FOR QC/QA OF BITUMINOUS MIXTURES:

ALL HOT-MIX ASPHALT..... 2.016 TONS/CU. YD.

ALL AGGREGATE 2.05 TONS/CU. YD.

BITUMINOUS MATERIALS (PRIME COAT)

ON PAVEMENT 0.09 GALS/SQ. YD.

ON AGG. SURFACE..... 0.32 GALS/SQ. YD.

AGGREGATE (PRIME COAT)..... 0.0015 TONS/SQ. YD.

THE QUANTITY OF SHORT TERM PAVEMENT MARKING SHOWN IN THE PLANS WAS BASED ON ONE APPLICATION EACH FOR THE MILLED SURFACE AND SURFACE COURSE.

PRIOR TO PLACEMENT OF THE FINAL PAVEMENT MARKINGS, THE RESIDENT ENGINEER SHALL CONTACT THE BUREAU OF OPERATIONS AND ARRANGE FOR INSPECTION AND APPROVAL OF THE PAVEMENT MARKING LAYOUT.

THE CONTRACTOR SHALL STAMP STATIONING IN THE PROPOSED BITUMINOUS MATS AT 300 FT. INTERVALS ON ALTERNATING SIDES OF THE PAVEMENT AND AS DIRECTED BY THE ENGINEER. THE STATION SYMBOL STAMPS USED SHALL BE FURNISHED BY THE CONTRACTOR. THEY SHALL BE 5 1/2 "TALL OF A DESIGN APPROVED BY THE ENGINEER AND SHALL REMAIN THE PROPERTY OF THE CONTRACTOR.

UNLESS OTHERWISE DIRECTED BY THE ENGINEER, BITUMINOUS RESURFACING SHALL BE PLACED IN A SEQUENCE THAT WILL MINIMIZE THE TIME THE CENTER -LINE EDGE IS EXPOSED TO TRAFFIC.

QUANTITIES SHOWN IN THE PLANS FOR PATCHING ARE ESTIMATES. THE ACTUAL AMOUNT OF PATCHING REQUIRED SHALL BE DETERMINED BY THE ENGINEER IN THE FIELD. THE PATCHING SURVEY WAS DONE ON 2/22/2011.

THE CONTRACTOR SHALL COMPLETE ALL PATCHING PRIOR TO THE BITUMINOUS SURFACE REMOVAL.

RECLAIMED ASPHALT PAVEMENT (RAP) WILL NOT BE ALLOWED FOR USE AS AGGREGATE IN AGGREGATE SHOULDERS, TYPE B.

THE SAWED JOINTS AT THE BEGINNING AND END OF THE PROJECT SHALL BE INCLUDED IN THE COST OF HOT-MIX ASPHALT SURFACE REMOVAL 1 1/2".

FILE NAME =	USER NAME = eybar.js	DESIGNED -	REVISED -	STATE OF ILLINOIS DEPARTMENT OF TRANSPORTATION	INDEX OF SHEETS, HIGHWAY STANDARDS, GENERAL NOTES	F.A.P. RTE.	SECTION	COUNTY	TOTAL SHEETS	SHEET NO.
ct:\pwork\pwidot\eybar.js\d0255677\sh-t	len.dgn	DRAWN -	REVISED -			869	10IRS-5	FRANKLIN	16	3
	PLOT SCALE = 100.0/196' / IN.	CHECKED -	REVISED -							
	PLOT DATE = 5/6/2011	DATE -	REVISED -		SCALE: _____ SHEET NO. ____ OF _____ SHEETS STA. _____ TO STA. _____					CONTRACT NO. 78247
[ILLINOIS] FED. AID PROJECT										

MIXTURE REQUIREMENTS SHALL BE PREPARED AS DIRECTED BELOW:

MAINLINE SURFACE COURSE

Location (s):	Hot-Mix Asphalt Surface Course
Mixture Use(s):	Polymerized Hot-Mix Asphalt Surface Course, M1x D, N90
AC/PG:	SBS PG76-22
RAP % (Max):	0
Design Air Voids:	4.0 %, 90 Gyration Design
Mixture Composition: (Gradation Mixture)	IL-9.5 mm or IL 12.5mm
Friction Aggregate:	D Surface

PATCHING SPECS

Location (s):	Class D Patching
Mixture Use(s):	Hot-Mix Asphalt Binder Course, N90, IL-19.0
AC/PG:	PG64-22
RAP % (Max):	10
Design Air Voids:	4.0 %, 90 Gyration Design
Mixture Composition: (Gradation Mixture)	IL-19.0
Friction Aggregate:	None

STRUCTURE INFORMATION SCHEDULE

STRUCTURE NO.	STATION	INV. RATING	OPR. RATING	SUFF. RATING
SN 028-0084	45+65.88	27.6	46.0	93.6
SN 028-7024	52+45	0.0	0.0	99.8
SN 028-7025	66+29	0.0	0.0	99.8

SN 028-0084 MTD ALLOWANCE: A LOADED MTD IS ALLOWED OVER THIS STRUCTURE.
 SN 028-7024 MTD ALLOWANCE: ONLY AN EMPTIED MTD IS ALLOWED OVER THIS STRUCTURE.
 SN 028-7025 MTD ALLOWANCE: ONLY AN EMPTIED MTD IS ALLOWED OVER THIS STRUCTURE.

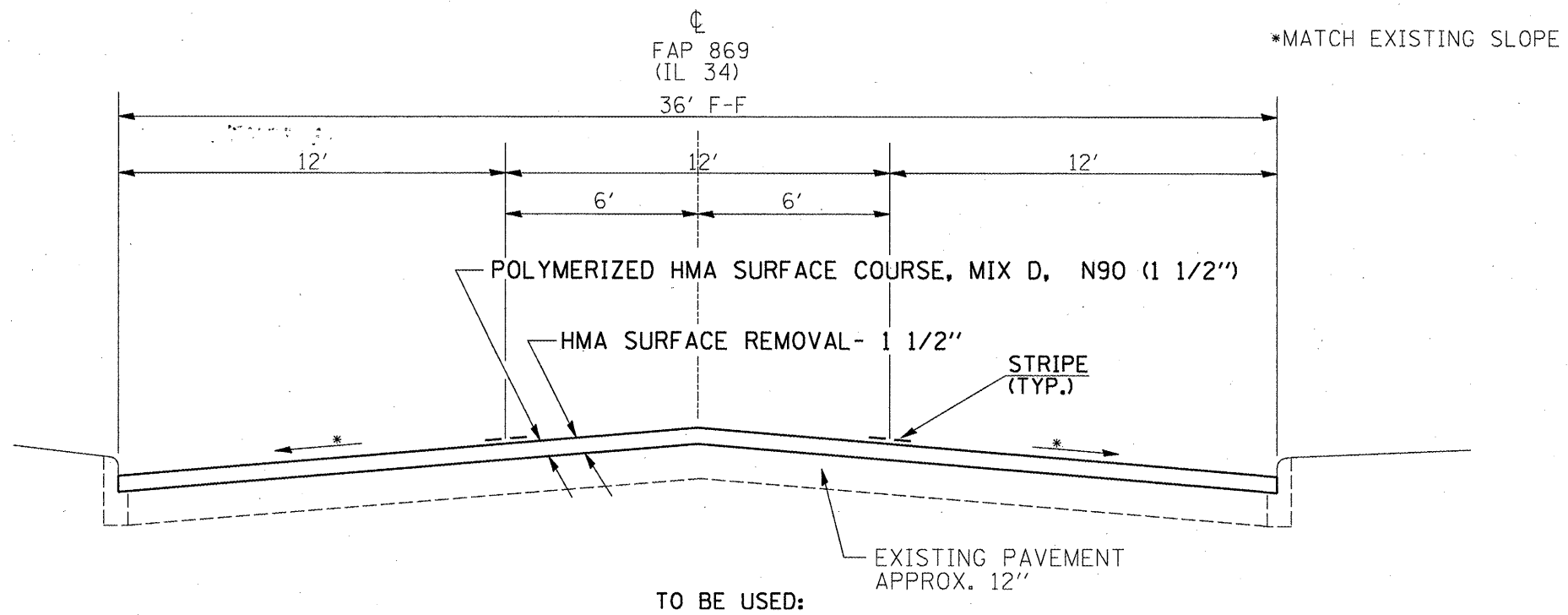
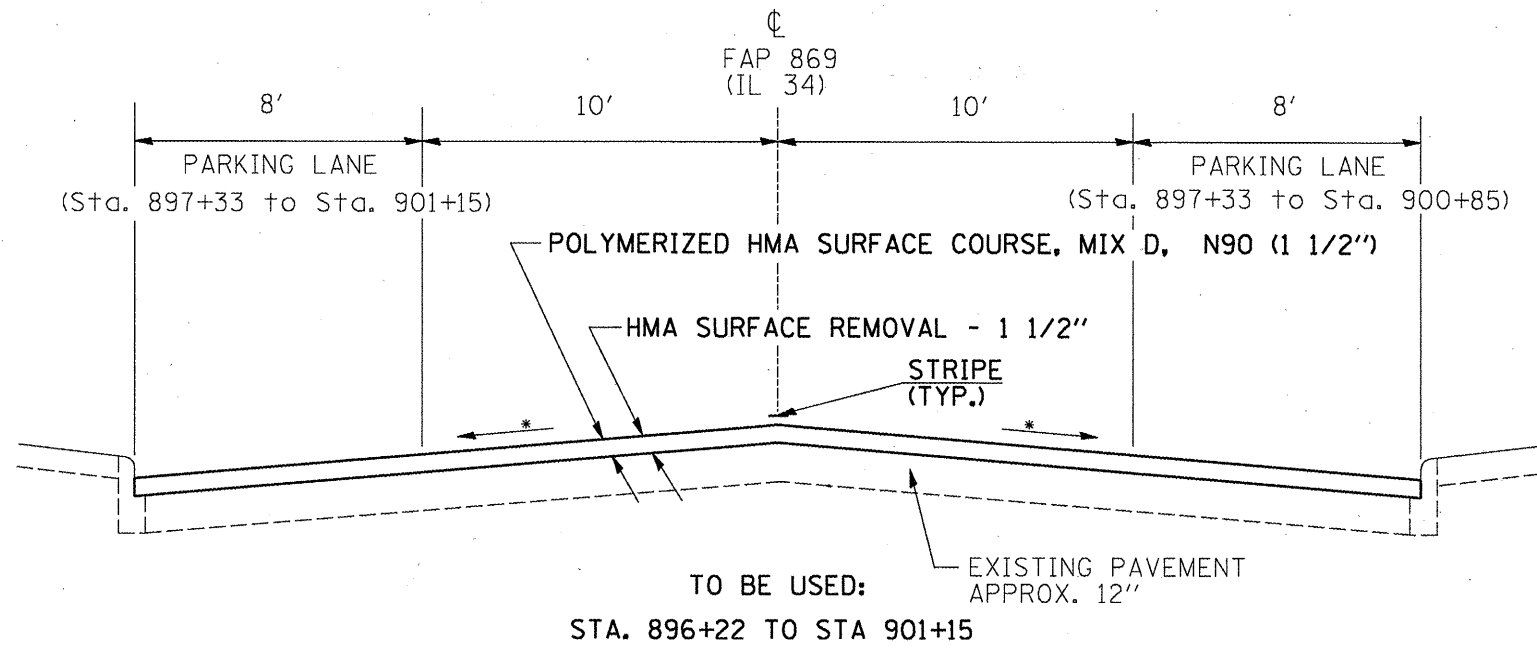
SUMMARY OF QUANTITIES

URBAN

			FAP 869(IL 34)	FAP 869(IL 34)	FAP 869(IL 34)
			FUNDING	20% CITY 80% FED	20% STATE 80% FED
			PROJECT TYPE	RESURFACING	RESURFACING
			COUNTY	FRANKLIN	FRANKLIN
			CONSTRUCTION TYPE CODE	CODE 0005	CODE 0005
CODE NUMBER	ITEM DESCRIPTION	UNIT	QUANTITY	QUANTITY	QUANTITY
Z0034105	MATERIAL TRANSFER DEVICE	TON	3311		3311
Z0048665	RAILROAD PROTECTIVE LIABILITY INSURANCE	L SUM	1		1
40600115	POLYMERIZED BITUMINOUS MATERIALS (PRIME COAT)	GALLON	3458	100	3358
40600300	AGGREGATE (PRIME COAT)	TON	58	2	56
40600990	TEMPORARY RAMP	SQ YD	116		116
40603545	POLYMERIZED HOT-MIX ASPHALT SURFACE COURSE, MIXTURE D, N90	TON	3311	47	3264
44000155	HOT-MIX ASPHALT SURFACE REMOVAL 1 1/2"	SQ YD	38428	557	37871
44201785	CLASS D PATCHES, TYPE I, 12"	SQ YD	6		6
44201789	CLASS D PATCHES, TYPE II, 12"	SQ YD	1412		1412
44201794	CLASS D PATCHES, TYPE III, 12"	SQ YD	436		436
44201796	CLASS D PATCHES, TYPE IV, 12"	SQ YD	618		618
48102100	AGGREGATE WEDGE SHOULDER, TYPE B	TON	137		137
67100100	MOBILIZATION	L SUM	1		1
70100460	TRAFFIC CONTROL AND PROTECTION, STANDARD 701306	L SUM	1		1
70100600	TRAFFIC CONTROL AND PROTECTION, STANDARD 701336	L SUM	1		1
70300100	SHORT TERM PAVEMENT MARKING	FOOT	2955		2955
70300210	TEMPORARY PAVEMENT MARKING, LETTERS AND SYMBOLS	SQ FT	695		695
70300220	TEMPORARY PAVEMENT MARKING, LINE 4"	FOOT	24187		24187
70300280	TEMPORARY PAVEMENT MARKING, LINE 24"	FOOT	120		120
70301000	WORK ZONE PAVEMENT MARKING REMOVAL	SQ FT	492		492
* 78000200	THERMOPLASTIC PAVEMENT MARKING, LINE 4"	FOOT	24187	284	23903
* 78000600	THERMOPLASTIC PAVEMENT MARKING, LINE 12"	FOOT	198		198
* 78000100	THERMOPLASTIC PAVEMENT MARKING, LETTERS AND SYMBOLS	SQ YD	694		694
* 78000400	THERMOPLASTIC PAVEMENT MARKING, LINE 6"	FOOT	288		288
* 78000650	THERMOPLASTIC PAVEMENT MARKING, LINE 24"	FOOT	120		120
* 78100100	RAISED REFLECTIVE PAVEMENT MARKER	EACH	393		393
78300200	RAISED REFLECTIVE PAVEMENT MARKER REMOVAL	EACH	393		393
88600100	DETECTOR LOOP, TYPE I	FOOT	248		248

*SPECIALTY ITEM

FILE NAME =	USER NAME = aybar.js	DESIGNED -	DRAWN -	CHECKED -	DATE -	REVISED -	REVISED -	REVISED -	REVISED -
		STATE OF ILLINOIS DEPARTMENT OF TRANSPORTATION							
		----- SUMMARY OF QUANTITIES -----							
		SCALE: _____ SHEET NO. ___ OF ___ SHEETS STA. _____ TO STA. _____							
		F.A.P. RTE. 869	SECTION 10IRS-5	COUNTY FRANKLIN	TOTAL SHEETS 16	SHEET NO. 5	CONTRACT NO. 78247		
ILLINOIS FED. AID PROJECT									

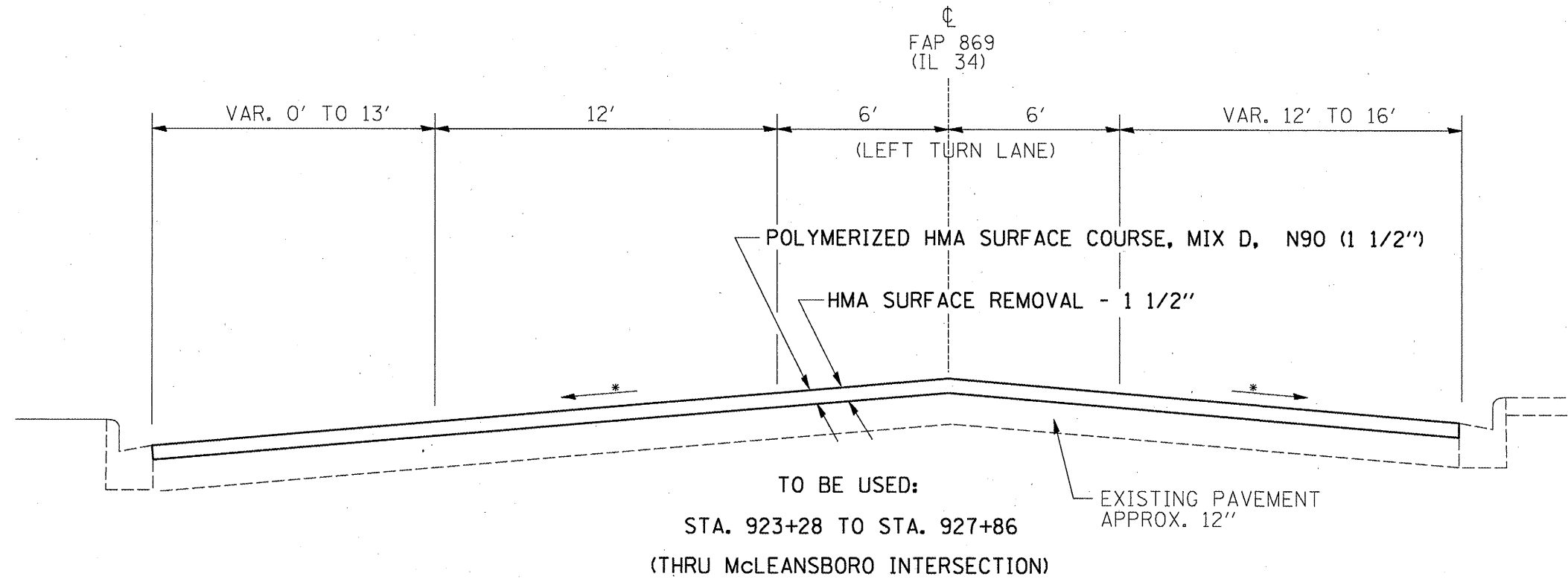


EQUATION STATIONS:
 EQ. STA. 926+09.7 (BK) = STA. 926+12.3 (A.H.)
 EQ. STA. 948+33 (BK) = STA. 0+00 (A.H.)
 EQ. STA. 50+10.4 (BK) = STA. 50+00 (A.H.)

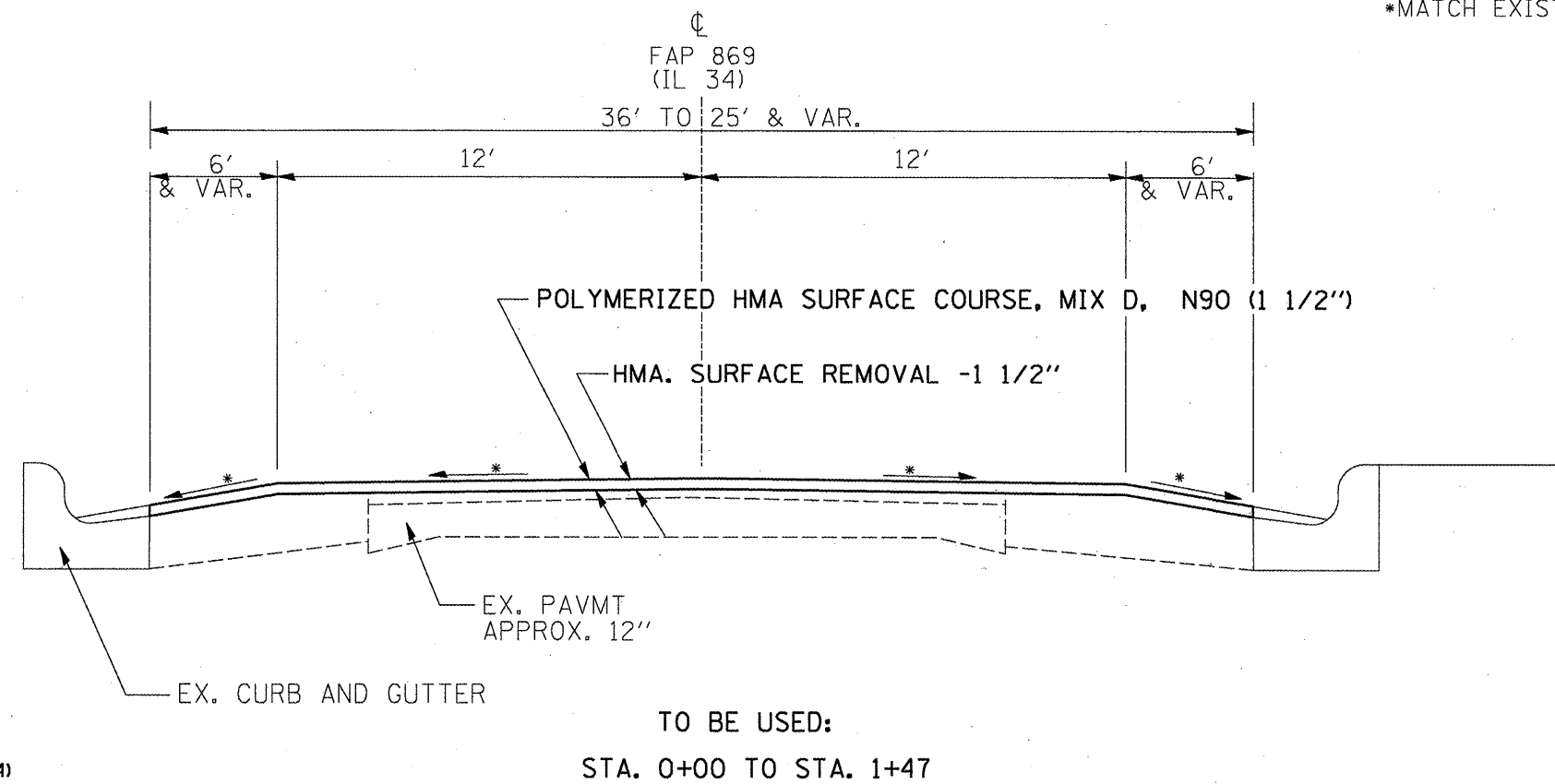
STA. 42+93.96 TO STA. 48+40.65 (OMISSION SN 028-0084)
 STA. 911+55 TO STA. 911+64 (RR TRACKS)
 STA. 911+80 TO STA. 911+91 (RR TRACKS)

TO BE USED:
 STA. 901+15 TO STA. 911+55
 STA. 911+64 TO STA. 911+80 (BETWEEN RR TRACKS)
 STA. 911+91 TO STA. 923+28
 STA. 927+86 TO STA. 948+33

FILE NAME =	USER NAME = aybar.js	DESIGNED -	REVISED -	STATE OF ILLINOIS DEPARTMENT OF TRANSPORTATION	TYPICAL SECTIONS				F.A.P. RTE.	SECTION	COUNTY	TOTAL SHEETS	SHEET NO.
ct:\pwwork\pww\dot\aybar.js\d0255677\sh	lenudgn	DRAWN -	REVISED -		869	10IRS-5	FRANKLIN	16	6				
	PLOT SCALE = 100.2653' / IN.	CHECKED -	REVISED -		SCALE: _____ SHEET NO. _____ OF _____ SHEETS STA. _____ TO STA. _____				CONTRACT NO. 78247				
	PLOT DATE = 4/26/2011	DATE -	REVISED -		ILLINOIS FED. AID PROJECT								

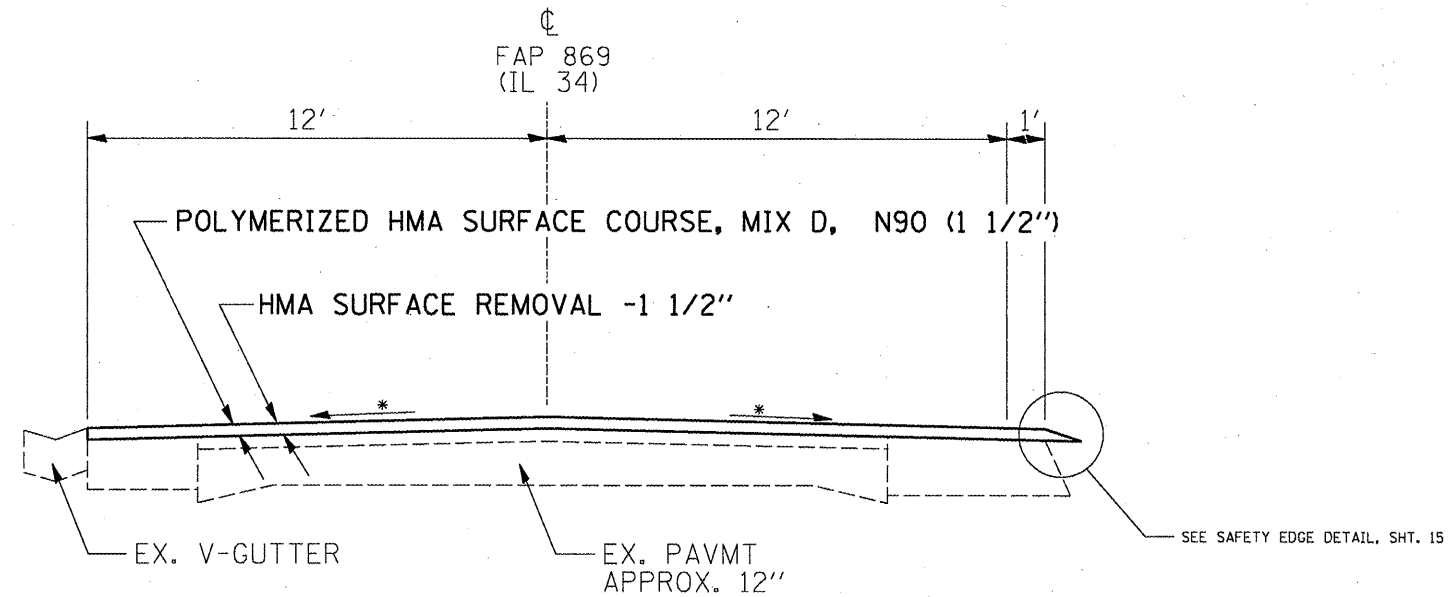


*MATCH EXISTING SLOPE



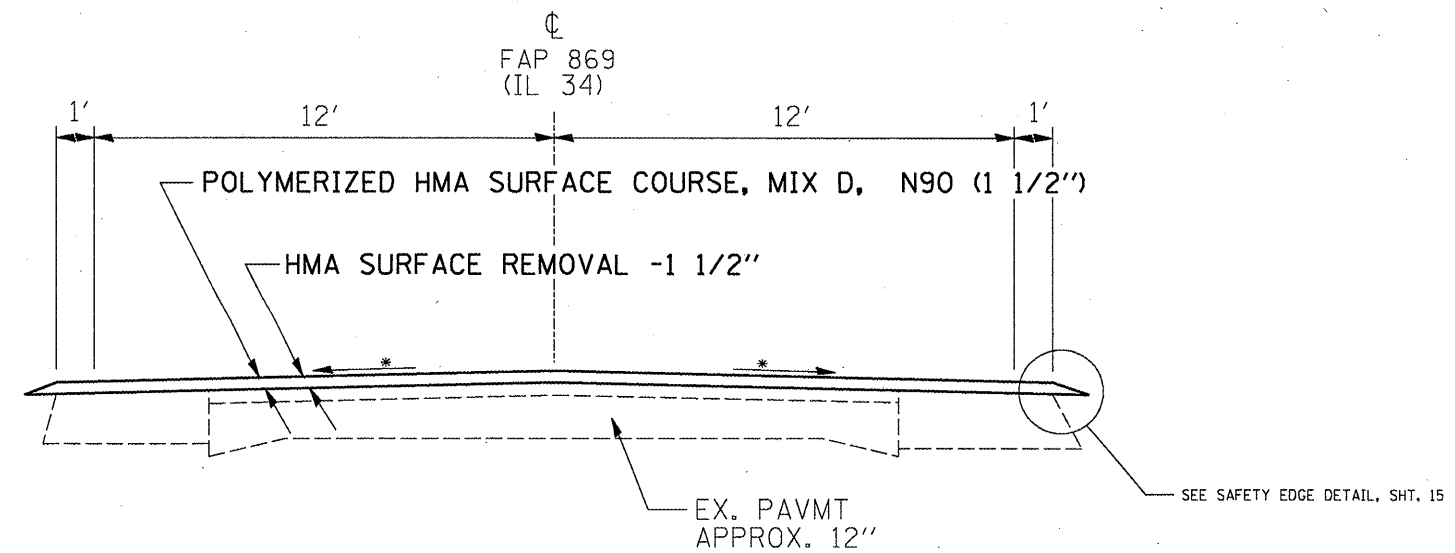
EQUATION STATIONS:
 EQ. STA. 926+09.7 (BK) = STA. 926+12.3 (A.H.)
 EQ. STA. 948+33 (BK) = STA. 0+00 (A.H.)
 EQ. STA. 50+10.4 (BK) = STA. 50+00 (A.H.)
 STA. 42+93.96 TO STA. 48+40.65 (OMISSION SN 028-0084)

FILE NAME =	USER NAME = eybor.js	DESIGNED -	REVISED -	STATE OF ILLINOIS DEPARTMENT OF TRANSPORTATION	TYPICAL SECTIONS	F.A.P. RTE.	SECTION	COUNTY	TOTAL SHEETS	SHEET NO.	
ct:\pw\work\p\sidot\eybor.js\d8255677\shtr-plan.dgn	PLOT SCALE = 1/8" = 1' / IN.	DRAWN -	REVISED -			869	10IRS-5	FRANKLIN	16	7	
PLOT DATE = 4/26/2011	DATE -	CHECKED -	REVISED -			CONTRACT NO. 78247					
		DATE -	REVISED -			ILLINOIS FED. AID PROJECT					
					SCALE: _____ SHEET NO. _____ OF _____ SHEETS		STA. _____ TO STA. _____				



TO BE USED:
STA. 1+47 TO STA. 6+88

*MATCH EXISTING SLOPE



TO BE USED:
STA. 6+88 TO STA. 42+93.96
STA. 48+40.65 TO STA. 50+10.4
STA. 50+00 TO STA. 66+49

EQUATION STATIONS:
EQ. STA. 926+09.7 (BK) = STA. 926+12.3 (A.H.)
EQ. STA. 948+33 (BK) = STA. 0+00 (A.H.)
EQ. STA. 50+10.4 (BK) = STA. 50+00 (A.H.)

STA. 42+93.96 TO STA. 48+40.65 (OMISSION SN 028-0084)

FILE NAME =	USER NAME = eyber.js	DESIGNED -	REVISED -	STATE OF ILLINOIS DEPARTMENT OF TRANSPORTATION	TYPICAL SECTIONS	F.A.P. RTE. 863	SECTION 10IRS-5	COUNTY FRANKLIN	TOTAL SHEETS 16	SHEET NO. 8		
ci:\pv\work\pwidot\eyber.js\d0255677\sh17	len.dgn	DRAWN -	REVISED -			SCALE: _____	SHEET NO. ____ OF ____ SHEETS	STA. _____ TO STA. _____	CONTRACT NO. 78247			
	PLOT SCALE = 100.2653' / IN.	CHECKED -	REVISED -			ILLINOIS FED. AID PROJECT						
	PLOT DATE = 4/26/2011	DATE -	REVISED -									

MAINLINE RESURFACING SCHEDULE

LOCATION STATION TO STATION	LENGTH FOR INFORMATIONAL PURPOSE ONLY (FT)	ROADWAY WIDTH (FT)	ROADWAY AREA (SQ YD)	TEMP RAMP (SQ YD)	HMA SURFACE REMOVAL (1 1/2") (SQ YD)	POLY. HMA SUR. CSE., MIX D, N 90 (1 1/2") (TON)	BIT. MAT. (PRIME COAT) (GAL)	AGG. (PRIME COAT) (TON)	AGGREGATE SHLDRS., TY. B (TON)	NOTE		
											TO	FROM
FAP 869 (IL 34) FROM STA 896+22 TO STA 66+49												
896+22.00		TO	911+55.00	1533.00	36	6132	20	6132	515	552	9.2	
EX. Railroad Sta. 911+55 to Sta. 911+91												
911+64.00		TO	911+80.00	16.0	37.0	66	41	66	6	6	0.1	BETWEEN RR TRACKS
911+91.00		TO	926+09.70	1418.7	36.0	5675	40	5675	477	511	8.5	
Eq. Sta. 926+09.7(bk) = Sta. 926+12.3(ah)												
926+12.30		TO	948+33.00	2220.7	36.0	8883		8883	746	799	13.3	
Eq. Sta. 948+33(bk) = Sta. 0+00(ah)												
+00.00		TO	1+47.00	147.0	30.5	498		498	42	45	0.7	36' TO 25' E-E
1+47.00		TO	6+88.00	541.0	25.0	1503		1503	134	135	2.3	SEE NOTE 3
6+88.00		TO	42+93.96	3606.0	26.0	10417		10417	925	938	15.6	91 SEE NOTE 3, NOTE 1
Sta. 42+93.96 to Sta. 48+40.65 (omission SN 028-0084)												
48+40.65		TO	50+10.40	169.8	26.0	490		490	44	44	0.7	4 SEE NOTE 3, NOTE 1
Eq. Sta. 50+10.4(bk) = Sta. 50+00(ah)												
50+00.00		TO	66+49.00	1649.0	26.0	4764	14	4764	423	429	7.1	42 SEE NOTE 3, NOTE 1
PROJECT TOTALS							116	38428	3311	3458	58	137

NOTE 1: Extra quantity of Aggregate Wedge Shoulder type B is added to accommodate drop-off zones as determined by Resident Engineer.

NOTE 2: Parking lane resurfacing quantities have been included in the Mainline Resurfacing Schedule.

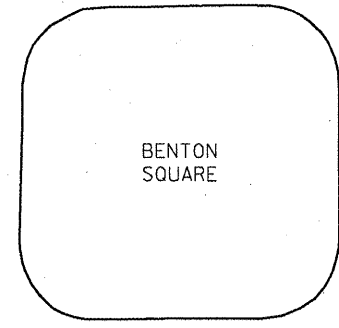
NOTE 3: Extra quantity of HMA Surf. CSE., Mix D, N90 (1 1/2") was added to accommodate safety wedge and inconsistencies on edges of pavement (3" by 1 1/2") Sta. 1+47 to Sta. 66+49

PARKING LANE RESURFACING SCHEDULE (FOR INFORMATION ONLY)

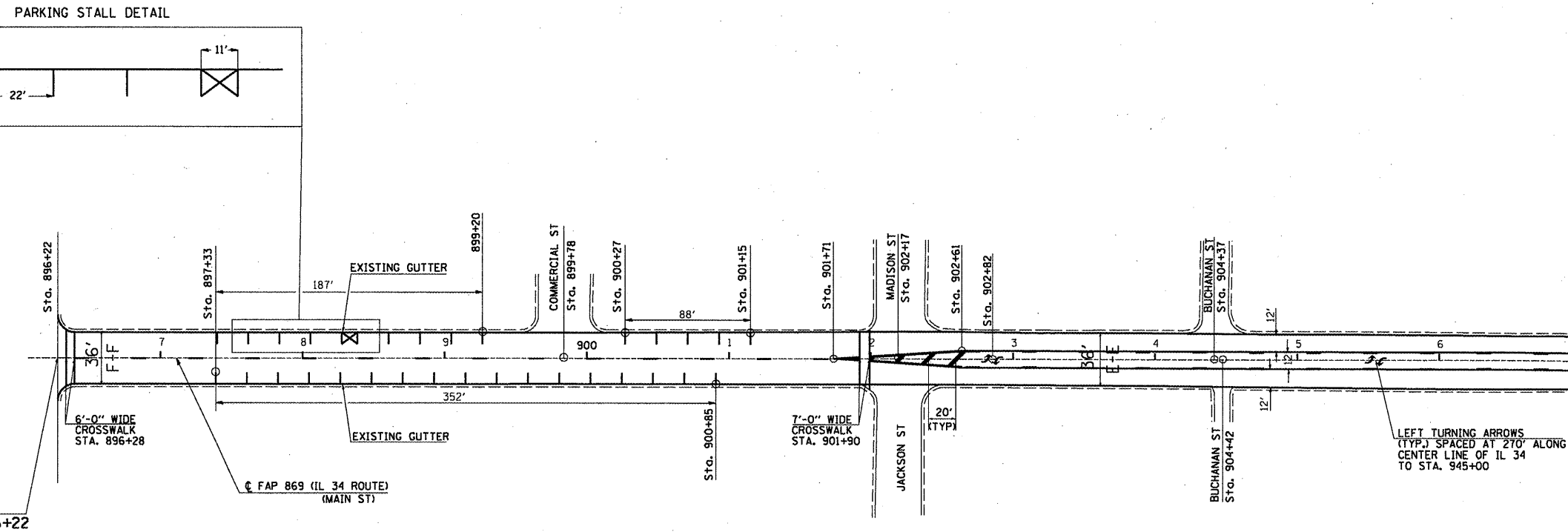
LOCATION STATION TO STATION	LENGTH FOR INFORMATIONAL PURPOSE ONLY (FT)	ROADWAY WIDTH (FT)	ROADWAY AREA (SQ YD)	HMA SURFACE REMOVAL (1 1/2") (SQ YD)	POLY. HMA SUR. CSE., MIX D, N 90 (1 1/2") (TON)	POLY. BIT. MAT. (PRIME COAT) (GAL)	AGG. (PRIME COAT) (TON)			
								TO	FROM	
FAP 869(IL 34) Benton Square Parking										
RT	897+33.00	TO	900+85.00	352.0	8.0	313	313	26	56	0.9
LT	897+33.00	TO	899+20.00	187.0	8.0	166	166	14	30	0.5
LT	900+27.00	TO	901+15.00	88.0	8.0	78	78	7	14	0.2
PROJECT TOTALS							557	47	100	2

PAVEMENT MARKING SCHEDULE

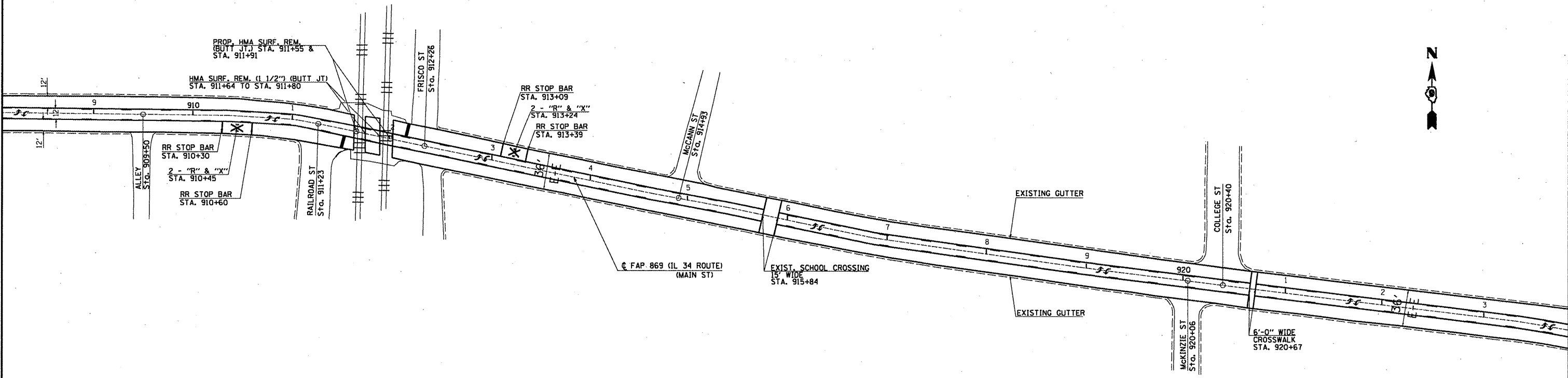
STATION TO STATION	THERMOPLASTIC PAVEMENT MARKING							TEMPORARY			SHORT-TERM	WORK ZONE PAVEMENT MARKING REMOVAL	NOTES	
	4 INCH			12 INCH (DIAGONALS) YELLOW	6 INCH (CROSSWALKS EDGE LINES) WHITE	24 INCH (STOP BARS) WHITE	LETTERS AND SYMBOLS	4 INCH YELLOW	24 INCH WHITE	LETTERS AND SYMBOLS	4 INCH			
	WHITE (EDGE LINE)	YELLOW (TURN LANE OR DBL. YELLOW)	(SKIP-DASH) YELLOW											FT
MAINLINE: Sta. 896+22 to Sta. 66+49														
896+22.0 TO 901+71.0								137				110	18	
LT & RT 901+71.0 TO 902+61.0		360.0						360						CLTL
LT & RT 902+61.0 TO 911+55.0		1,788.0	447					2235				358	60	CLTL
RT 910+30														RR CROSSING
RT 910+45									12					RR CROSSING "X"
RT 910+45.0								54.0			54.0			RR CROSSING 2- "R" S
RT 910+60								7.2			7.2			RR CROSSING
RT 911+44.0									12					STOP BAR
STA. 911+55 TO 911+91 RR CROSSING														
912+06.0														STOP BAR
LT 913+09.0									12					RR CROSSING
LT 913+24.0								54.0			54.0			RR CROSSING "X"
LT 913+24.0								7.2			7.2			RR CROSSING 2- "R" S
LT 913+39.0									12					RR CROSSING
LT & RT 911+91.0 TO 923+28.0		2,274.0	569					2843				455	76	CLTL
RT 924+35.0 TO 925+05.0		70.0						70						LFT TNR LN
LT 924+45.0								20.8			20.8			"ONLY"
LT 924+73.0								15.6			15.6			LT TURN ARROW
LT 923+28.0 TO 925+05.0		354.0						354						STOP BAR
925+05									24					STOP BAR
MCLEANSBORO RD. STA. 925+50														
925+90.7														STOP BAR
RT 925+90.7 TO 926+09.7		38.0						38						LFT TNR LN
925+90.7 TO 926+09.7		19						19						CLTL
EO. STA. 926+09.7 (BK.) = 926+12.3 (AH.)														
926+12.3 TO 926+70.0		58						58						LFT TNR LN
926+24.0														CLTL
926+72.0														LFT TNR LN
RT 926+12.3 TO 927+86.0		347.4						347						LT TURN ARROW
LT & RT 927+86.0 TO 945+70.0		3,568.0	892.0					4460				714	119	"ONLY"
LT & RT 945+70.0 TO 948+33.0		1,052.0						1052						CLTL
EO. STA. 948+33 (BK.) = 0+00 (AH.)														
+0 TO +63.0		252.0						252						CLTL
+63.0 TO 50+10.4			1236.9					1237				989	165	CLTL
LT +63.0 TO 6+00.0		537						537						CLTL
RT 1+47.0 TO 42+94.0		4147.0						4147						CLTL
LT 6+88.0 TO 42+94.0		3606.0						3606						CLTL
STR. NO. 028 -0084 Sta. 42+93.96 to Sta. 48+40.65 (Omission)														
LT & RT 48+40.7 TO 50+10.4			339.5					340						CLTL
EO. STA. 50+10.4 (BK.) = 50+00 (AH.)														
50+00.0 TO 66+49.0			412.3					412				330	55	CLTL
RT 51+16.0 TO 57+92.0		676.0						676						NPZ
LT 59+25.0 TO 66+49.0		724.0						724						NPZ
896+28.0														CROSSWALK
901+90.0														CROSSWALK
915+84.0														CROSSWALK
920+67.0														CROSSWALK
902+83.0														TURNING ARROWS
905+53.0														TURNING ARROWS
908+23.0														TURNING ARROWS
910+93.0														TURNING ARROWS
912+93.0														TURNING ARROWS
916+33.0														TURNING ARROWS
919+03.0														TURNING ARROWS
921+73.0														TURNING ARROWS
923+60.0														TURNING ARROWS
928+50.0														TURNING ARROWS
931+20.0														TURNING ARROWS
933+90.0														TURNING ARROWS
936+60.0														TURNING ARROWS
939+30.0														TURNING ARROWS
942+00.0														TURNING ARROWS
944+70.0														TURNING ARROWS
LT 897+32.0 TO 901+15.0		148.0						148						PARKING STALLS
RT 897+33.0 TO 900+85.0		136.0						136						PARKING STALLS
901+71.0 TO 902+61.0														DIAGONALS
945+76.0 TO 0+63.0														DIAGONALS
SUB-TOTALS MAINLINE														
TOTALS MAINLINE														
		8,092	12,401	3,694	198	288	120	694.4	24,187	120	694.4	2,955	492	
			24,187		198	288	120	694.4	24,187	120	694.4	2,955	492	



PROP. PROJECT
BEGINS - STA. 896+22



NOTE: FOR PAVEMENT STRIPING QUANTITIES,
SEE SCHEDULE ON SHT. 10



NOTE: FOR PAVEMENT STRIPING QUANTITIES,
SEE SCHEDULE ON SHT. 10

FILE NAME =
c:\p\work\p\dot\eybar.js\d0255677\shtr

USER NAME = eybar.js
andgn
PLOT SCALE = 100.2653' / IN.
PLOT DATE = 4/26/2011

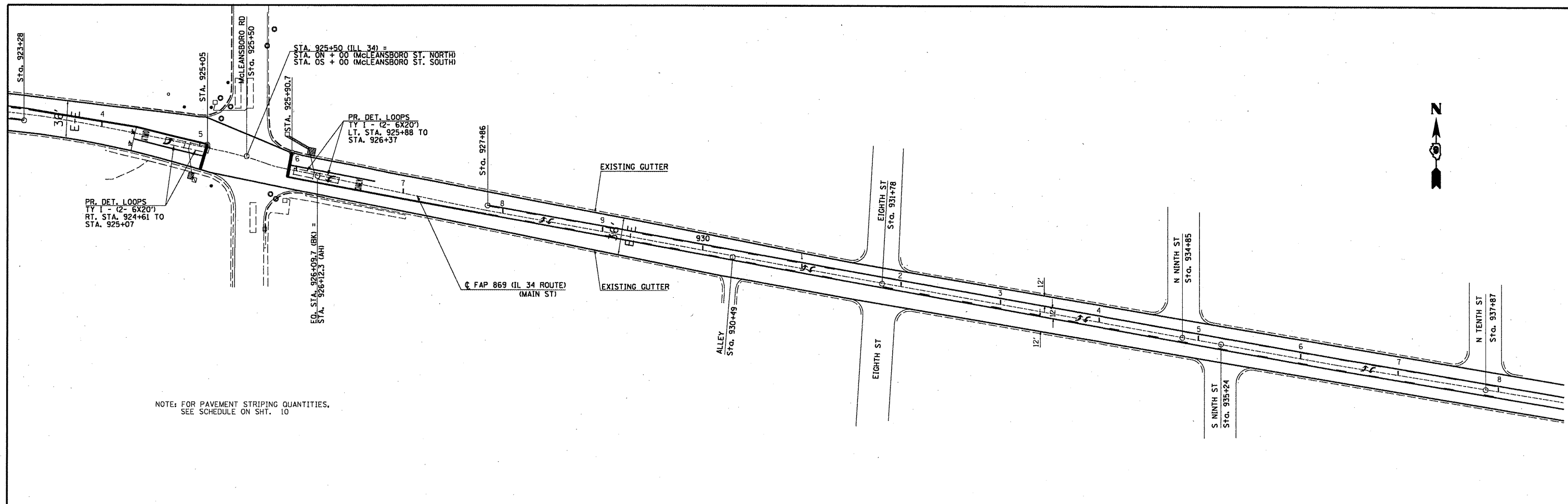
DESIGNED -
DRAWN -
CHECKED -
DATE -

REVISED -
REVISED -
REVISED -
REVISED -

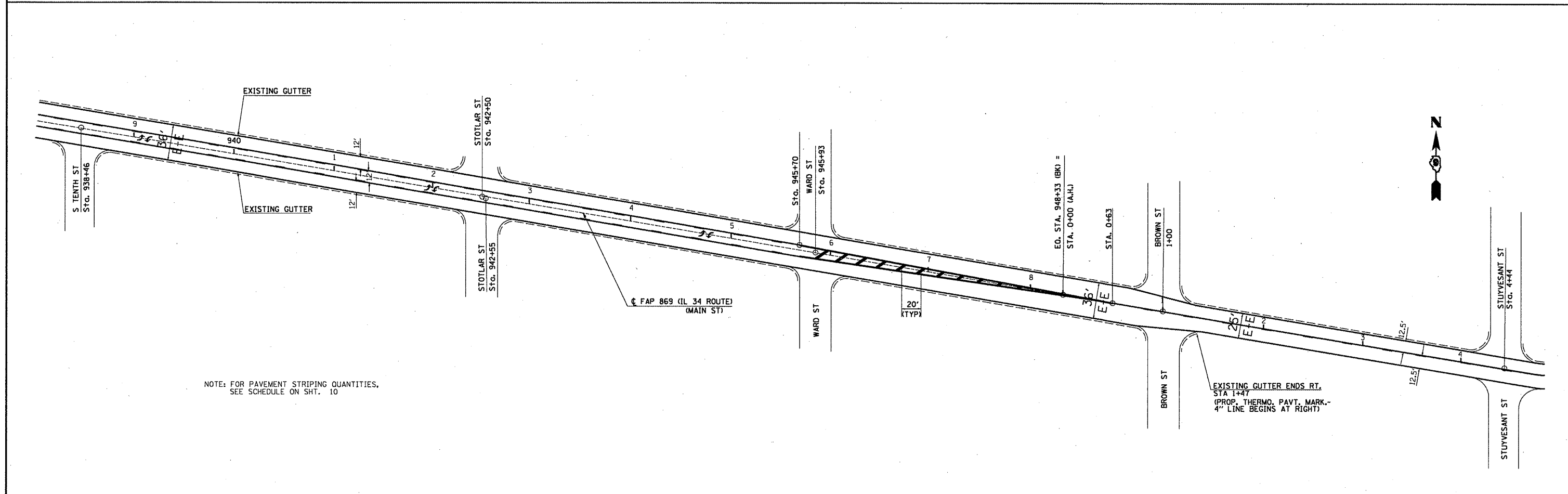
STATE OF ILLINOIS
DEPARTMENT OF TRANSPORTATION

PLAN LAYOUT
SCALE: SHEET NO. OF SHEETS STA. 896+22 TO STA. 923+00.

F.A.R. RTE. 869	SECTION 10IRS-5	COUNTY FRANKLIN	TOTAL SHEETS 16	SHEET NO. 11
CONTRACT NO. 78247			ILLINOIS FED. AID PROJECT	

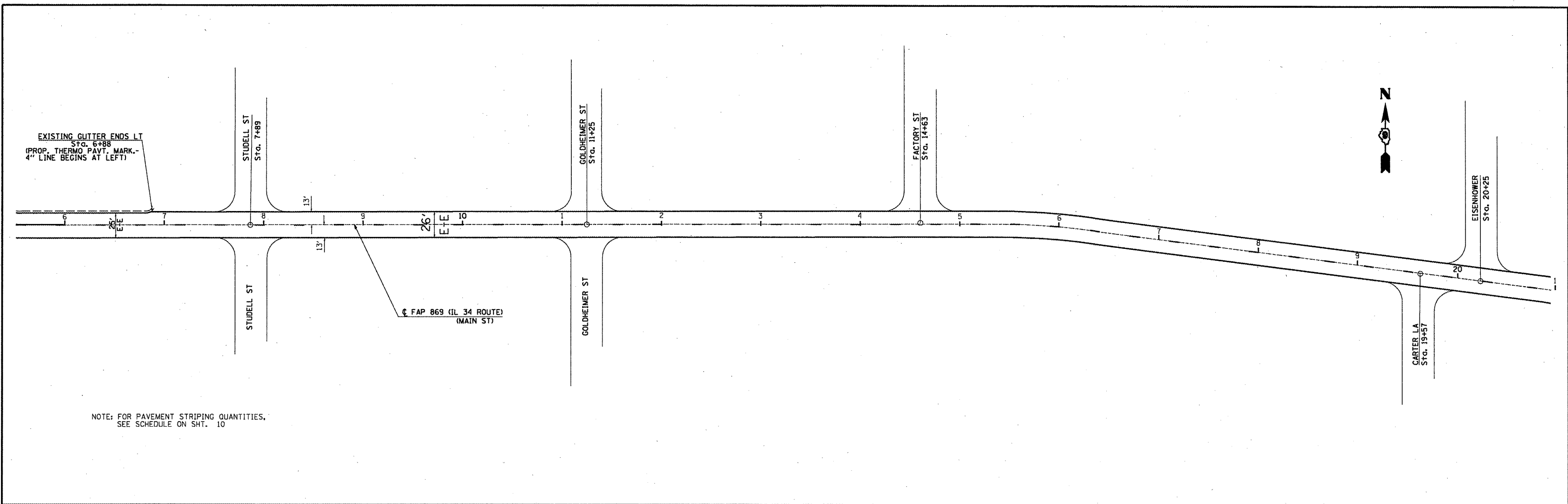


NOTE: FOR PAVEMENT STRIPING QUANTITIES,
SEE SCHEDULE ON SHT. 10

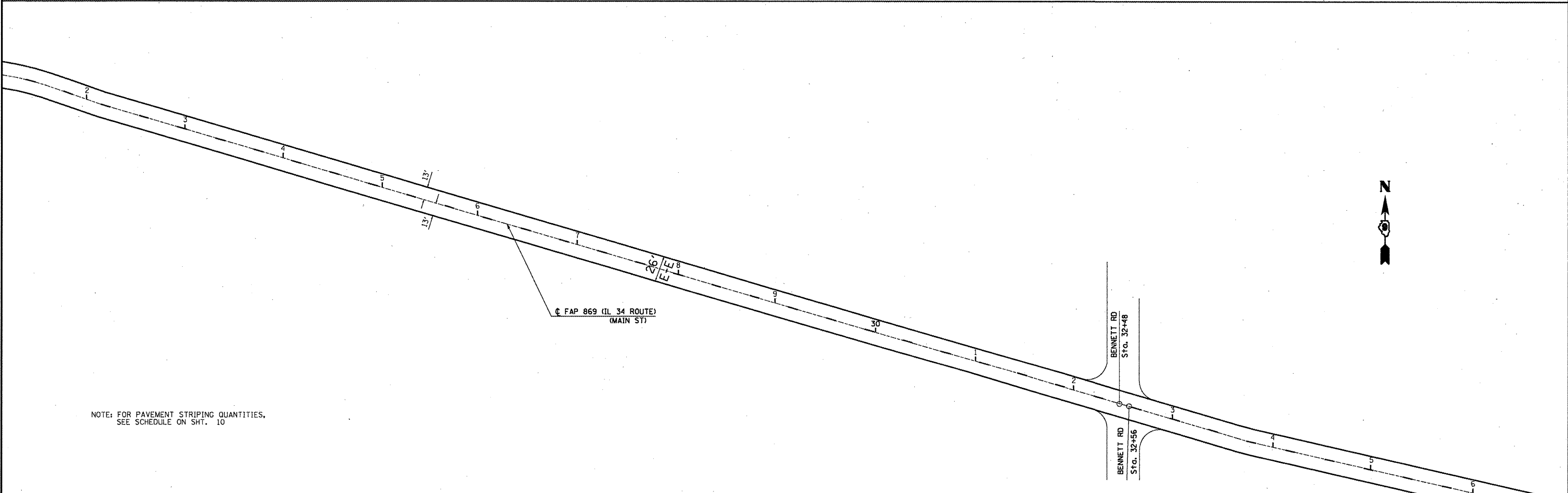


NOTE: FOR PAVEMENT STRIPING QUANTITIES,
SEE SCHEDULE ON SHT. 10

FILE NAME =	USER NAME = aybar.js	DESIGNED -	REVISED -	STATE OF ILLINOIS DEPARTMENT OF TRANSPORTATION	----- PLAN LAYOUT -----	F.A.P. RTE. 863	SECTION 10IRS-5	COUNTY FRANKLIN	TOTAL SHEETS 16	SHEET NO. 12	
CONTRACT NO. 78247	SCALE: _____	DRAWN -	REVISED -			SHEET NO. ___ OF ___ SHEETS	STA. 923+28 TO STA. 4+44	ILLINOIS FED. AID PROJECT			
		CHECKED -	REVISED -								
		DATE -	REVISED -								

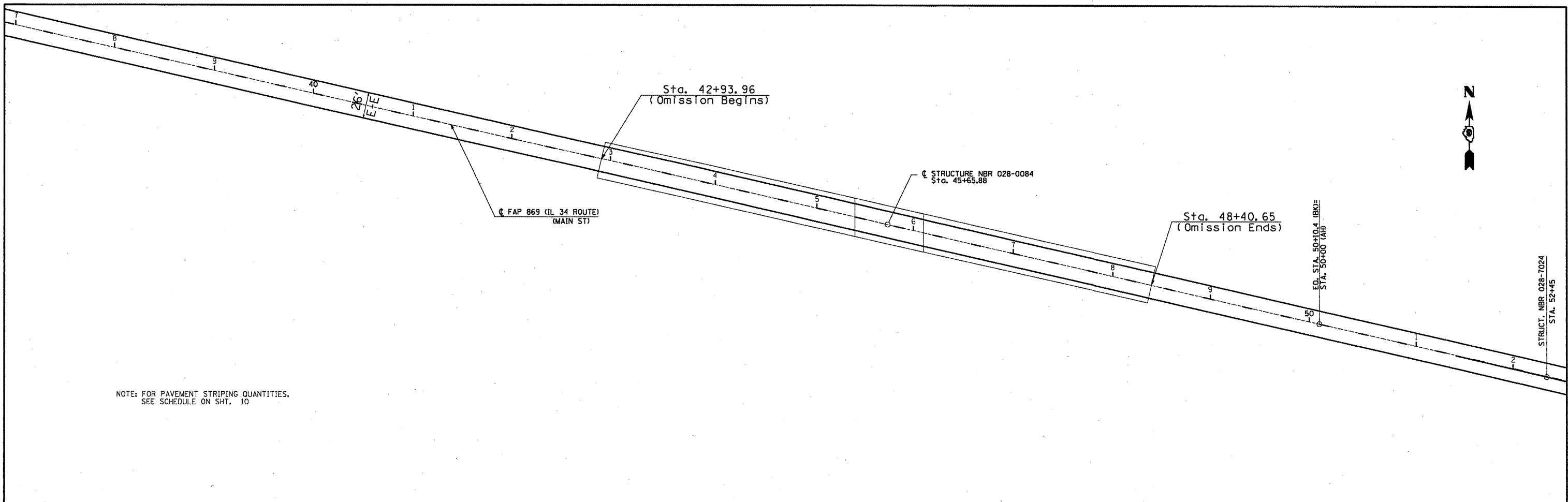


NOTE: FOR PAVEMENT STRIPING QUANTITIES, SEE SCHEDULE ON SHT. 10

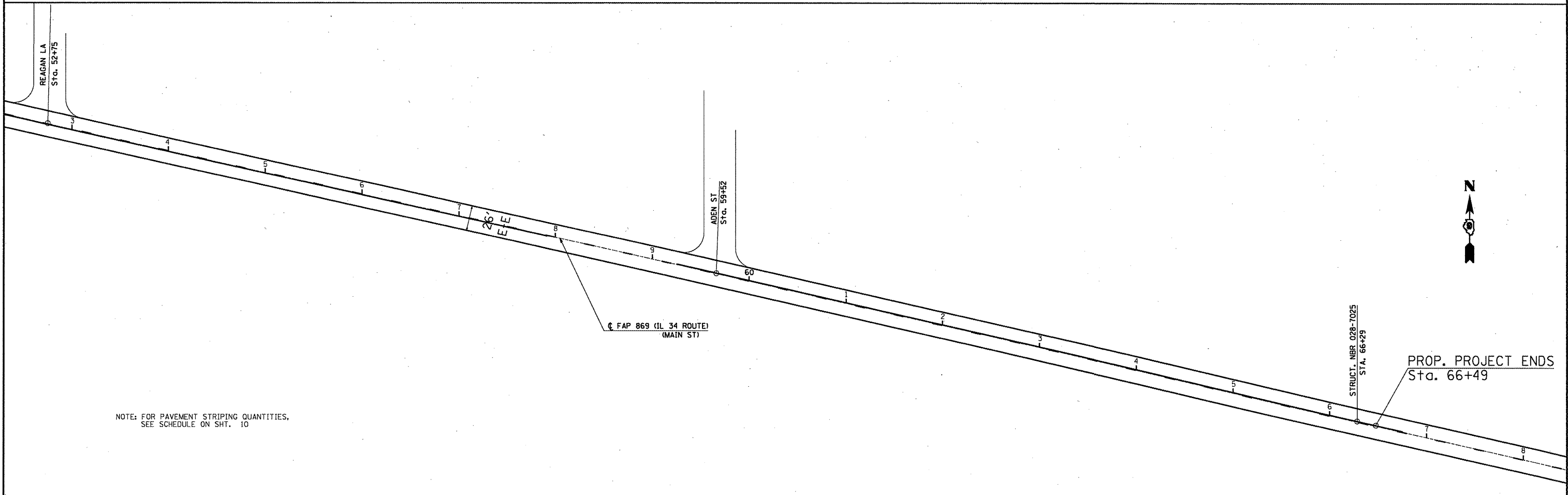


NOTE: FOR PAVEMENT STRIPING QUANTITIES, SEE SCHEDULE ON SHT. 10

FILE NAME =	USER NAME = eyber.js	DESIGNED -	REVISED -	STATE OF ILLINOIS DEPARTMENT OF TRANSPORTATION	PLAN LAYOUT		F.A.P. RTE.	SECTION	COUNTY	TOTAL SHEETS	SHEET NO.	
ci:\pwwork\pwwork\eyber.js\d0255677\shtr	1on.dgn	DRAWN -	REVISED -		SCALE: -----	SHEET NO. -- OF -- SHEETS	STA. 6+00 TO STA. 36+00	869	10IRS-5	FRANKLIN	16	13
	PLOT SCALE = 100.2653' / IN.	CHECKED -	REVISED -									
	PLOT DATE = 4/26/2011	DATE -	REVISED -									
							CONTRACT NO. 18247					
							ILLINOIS FED. AID PROJECT					



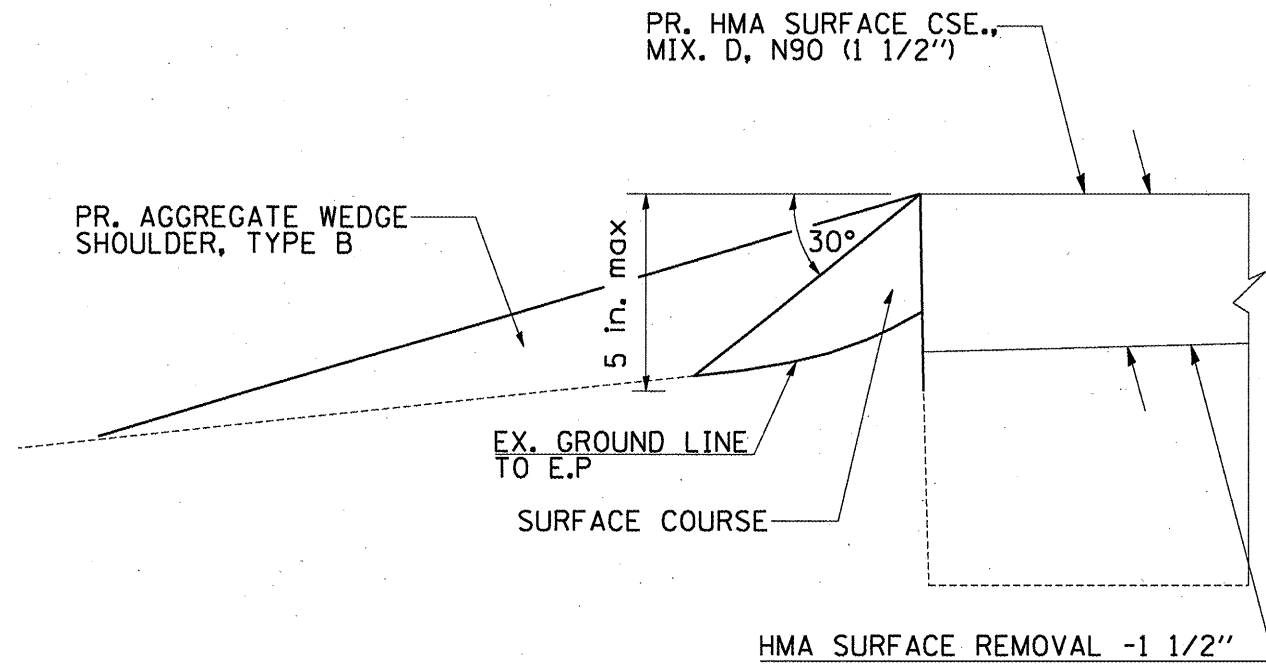
NOTE: FOR PAVEMENT STRIPING QUANTITIES,
SEE SCHEDULE ON SHT. 10



NOTE: FOR PAVEMENT STRIPING QUANTITIES,
SEE SCHEDULE ON SHT. 10

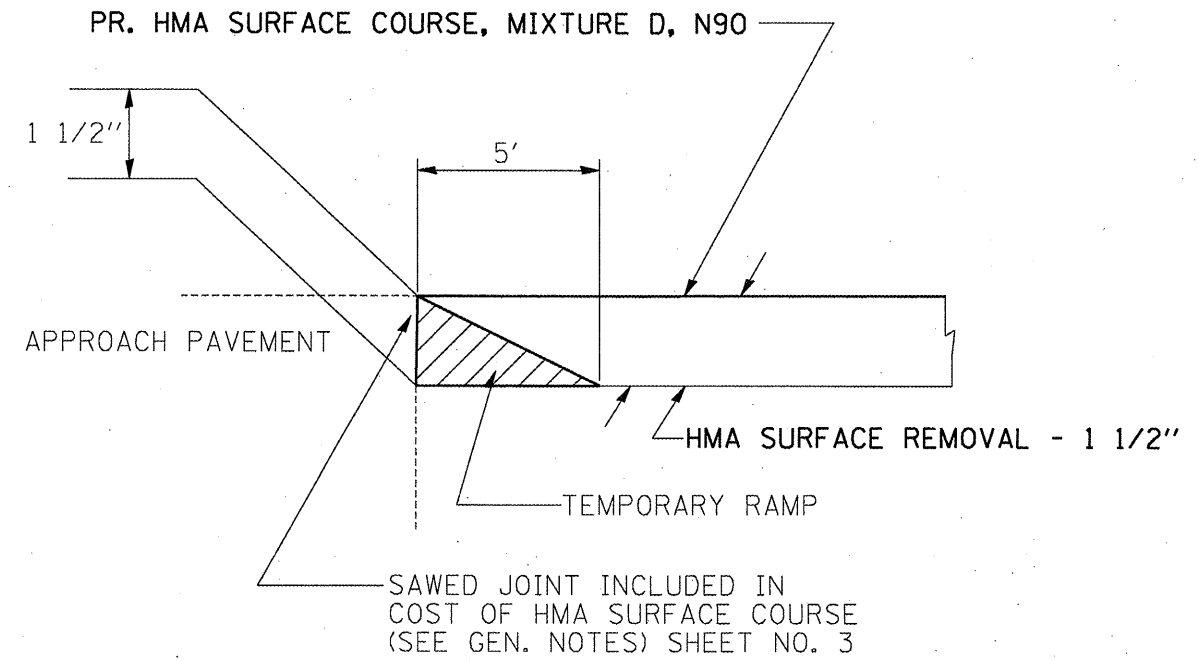
FILE NAME =	USER NAME = aybar.js	DESIGNED -	REVISED -	STATE OF ILLINOIS DEPARTMENT OF TRANSPORTATION	----- PLAN LAYOUT -----	F.A.P. RTE. 869	SECTION 10IRS-5	COUNTY FRANKLIN	TOTAL SHEETS 16	SHEET NO. 14		
as:\pwwork\prip\dott\aybar.js\d0255677\sh10.dgn	PLOT SCALE = 100.2653' / IN.	DRAWN -	REVISED -			SCALE: -----	SHEET NO. -- OF -- SHEETS	STA. 37+00 TO STA. 66+49	CONTRACT NO. 78247			
	PLOT DATE = 4/26/2011	CHECKED -	REVISED -			ILLINOIS FED. AID PROJECT						
		DATE -	REVISED -									

SAFETY EDGE DETAIL



TO BE USED:
 IN DROP-OFF ZONES OR
 AS DIRECTED BY THE FIELD ENGINEER

BUTT JOINT DETAIL

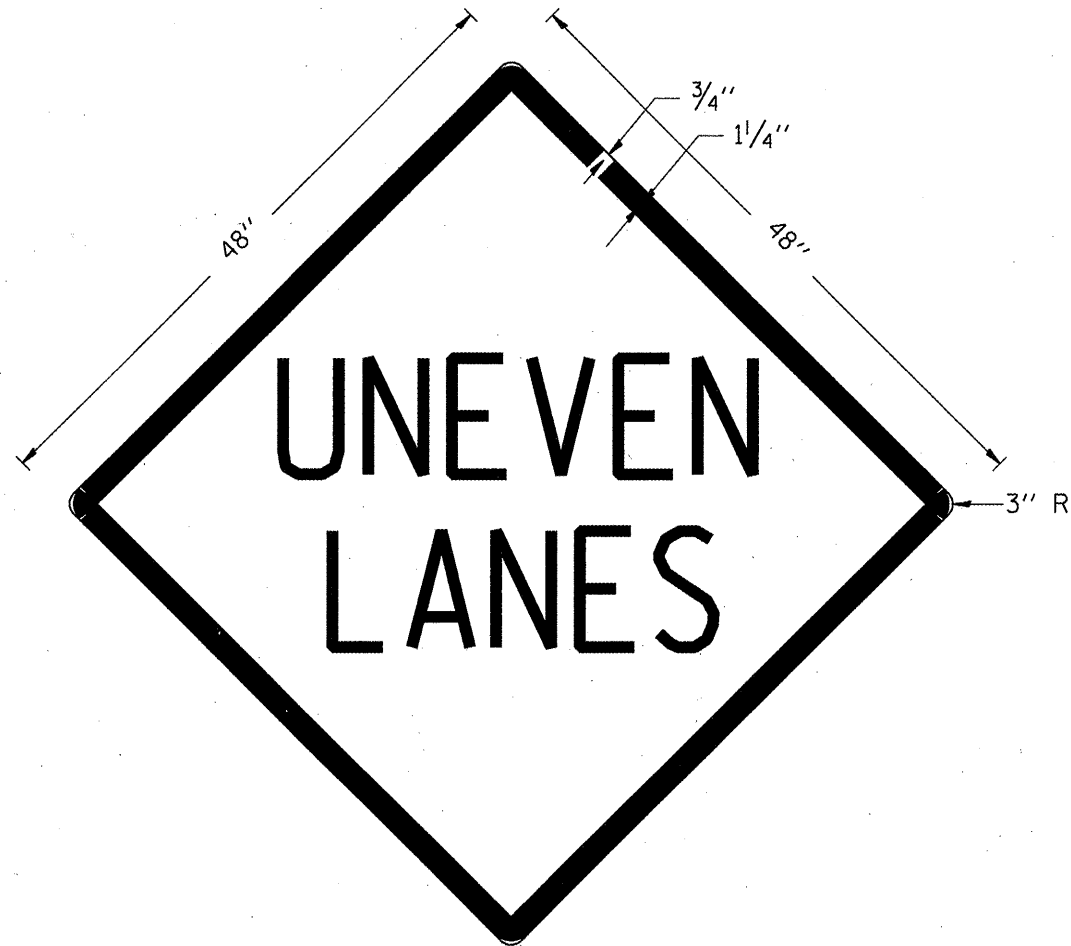


TO BE USED:
 STA. 896+22
 STA. 911+55
 STA. 911+91
 STA. 66+49

FILE NAME =	USER NAME = aybar.js	DESIGNED -	REVISD -	STATE OF ILLINOIS DEPARTMENT OF TRANSPORTATION	DETAIL: TEMPORARY RAMP, SAFETY EDGE	F.A.P. RTE.	SECTION	COUNTY	TOTAL SHEETS	SHEET NO.
c:\pw\work\pwidot\aybar.js\d0205677\shd	len.dgn	DRAWN -	REVISD -			863	10IRS-5	FRANKLIN	16	15
PLOT SCALE = 100.2653' / IN.	CHECKED -	REVISD -	REVISD -			CONTRACT NO. 78247				
PLOT DATE = 4/26/2011	DATE -	REVISD -	REVISD -			ILLINOIS FED. AID PROJECT				
					SCALE: _____	SHEET NO. ___ OF ___ SHEETS		STA. _____ TO STA. _____		

UNEVEN LANES SIGN

W8-11 (48" x 48")



COLORS:

LEGEND AND BORDER - BLACK NON-REFLECTORIZED
 BACKGROUND - ORANGE REFLECTORIZED

NOTE: PRIOR TO ALLOWING TRAFFIC ON ANY PORTION OF THE ROADWAY THAT HAS BEEN COLD MILLED OR BEFORE RESURFACING OPERATIONS BEGIN, THE CONTRACTOR SHALL HAVE ERECTED "UNEVEN PAVEMENT" SIGNS THAT CONFORM TO THE ABOVE DETAILS. A MINIMUM OF ONE SIGN AT EACH END OF THE IMPROVEMENT WILL BE REQUIRED. THE CONTRACTOR SHALL MAINTAIN THE "UNEVEN PAVEMENT" SIGNS UNTIL THE RESURFACING OPERATIONS ARE COMPLETED.

IF AT ANY TIME THE SIGNS ARE IN PLACE BUT NOT APPLICABLE, THEY SHALL BE TURNED FROM THE VIEW OF MOTORISTS OR COVERED AS DIRECTED BY THE ENGINEER.

THE COST OF FURNISHING, ERECTING, MAINTAINING, AND REMOVING THE REQUIRED SIGNS SHALL BE INCLUDED IN THE CONTRACT.

REVISIONS

DRAWN	2-15-89
REVISED	4-06-93
REDESIGNED	
RESIZED	

STD. 9-41