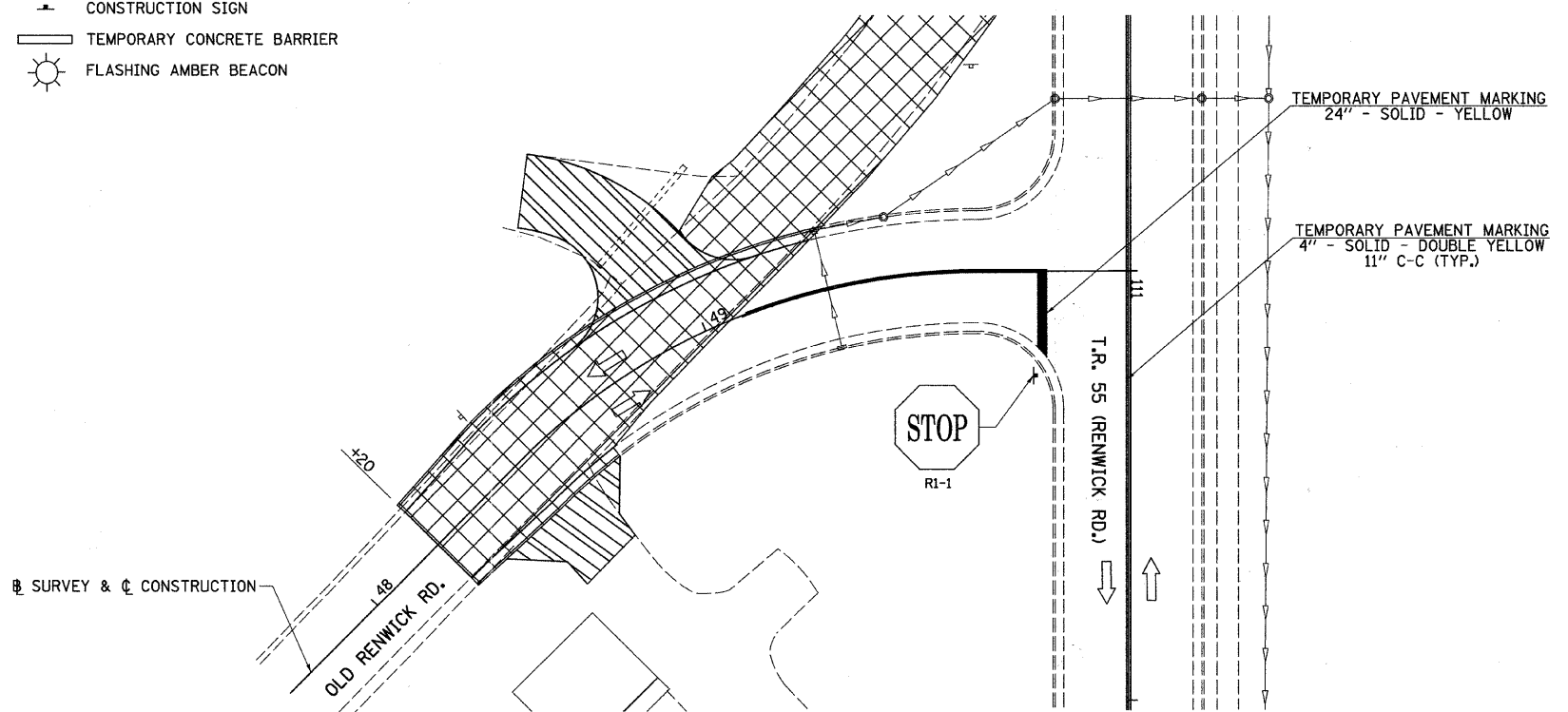
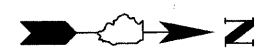


- LEGEND**
- BARRICADE OR DRUM WITH STEADY BURNING MONODIRECTIONAL LIGHT
  - ➔ DIRECTION OF TRAFFIC
  - ▨ CONSTRUCTION ZONE
  - ▩ AREA CLOSED TO TRAFFIC
  - ⊕ TYPE III BARRICADE WITH FLASHING LIGHT (2-EA.)
  - ⊥ CONSTRUCTION SIGN
  - ▬ TEMPORARY CONCRETE BARRIER
  - ☀ FLASHING AMBER BEACON



FILE NAME = V:\2545\2545F205.dgn	USER NAME = shughes	DESIGNED -	REVISED -	<b>STATE OF ILLINOIS DEPARTMENT OF TRANSPORTATION</b>	<b>RIVER RD. &amp; OLD RENWICK RD. STAGE 2 TRAFFIC CONTROL PLAN</b>			F.A. RTE.	SECTION	COUNTY	TOTAL SHEETS	SHEET NO.
	PLOT SCALE = 20.000' / IN.	DRAWN -	REVISED -		SCALE: 1"=20'	SHEET NO. 8 OF 8 SHEETS	STA. 18+00 TO STA. 19+81.31	TR 55	90-16103-01-BR	WILL	255	73
	PLOT DATE = 5/19/2011	CHECKED -	REVISED -					CONTRACT NO. 83126				
		DATE -	REVISED -					FED. ROAD DIST. NO. ILLINOIS FED. AID PROJECT				