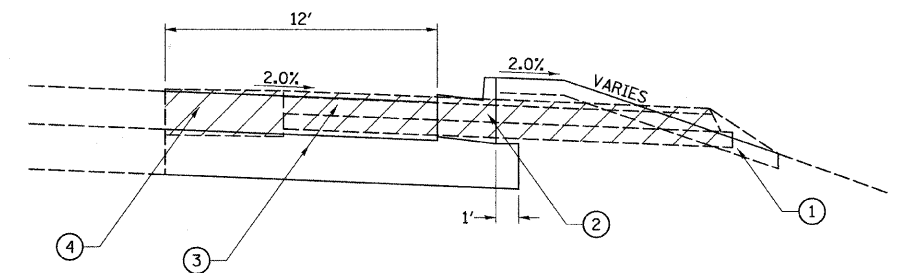


**RIVER RD.
STAGE 3**

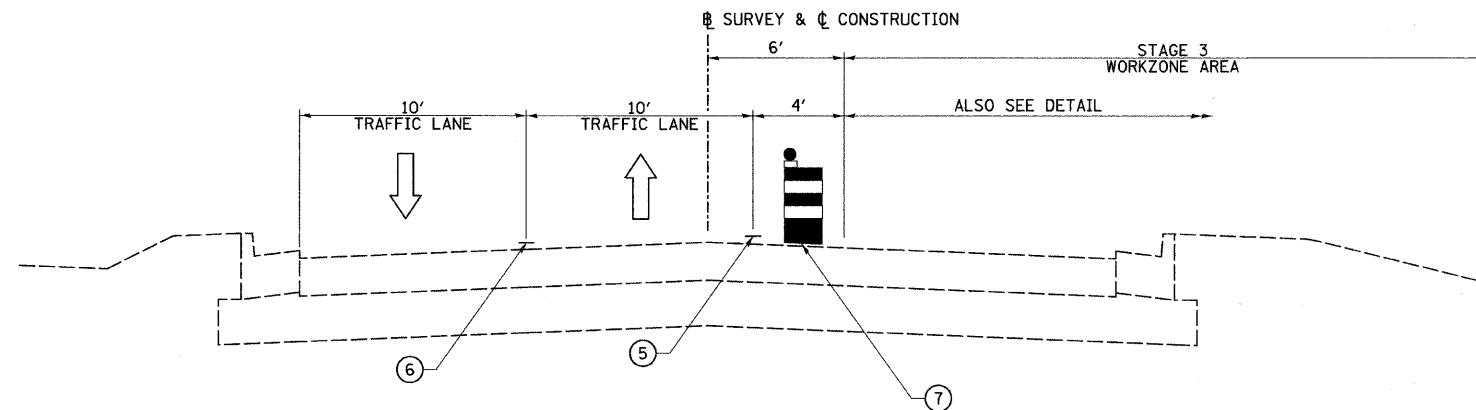
STA. 7+90.99 TO STA. 10+00.00

- ① TOPSOIL FURNISH AND PLACE, 4"
- ② COMBINATION CONCRETE CURB & GUTTER, TYPE B-6.24
- ③ PROPOSED PAVEMENT (EXCLUDING SURFACE)
- ④ REMOVE EXISTING PAVEMENT
- ⑤ TEMPORARY PAVEMENT MARKING, 4" - SOLID - WHITE
- ⑥ TEMPORARY PAVEMENT MARKING, 4" - SOLID - DOUBLE YELLOW, 11" C-C
- ⑦ TYPE II BARRICADE OR DRUM



DETAIL

STA. 10+00.00 TO STA. 12+43.59



**RIVER RD.
STAGE 3**

STA. 10+00.00 TO STA. 16+44.11

FILE NAME = V:\2545\2545f1301.dgn	USER NAME = bdeoraene	DESIGNED -	REVISED -	STATE OF ILLINOIS DEPARTMENT OF TRANSPORTATION	RIVER RD. STAGE 3 TYPICAL SECTIONS			F.A. RTE. TR 55	SECTION 90-16103-01-BR	COUNTY WILL	TOTAL SHEETS 255	SHEET NO. 75
PLOT SCALE = 4,000' / IN.	CHECKED -	REVISIED -	REVISIED -		SCALE: 1"=4'	SHEET NO. 2 OF 3 SHEETS	STA. N/A	TO STA. N/A	CONTRACT NO. 83126			
PLOT DATE = 5/10/2011	DATE -	REVISIED -	REVISIED -		FED. ROAD DIST. NO. ILLINOIS FED. AID PROJECT							