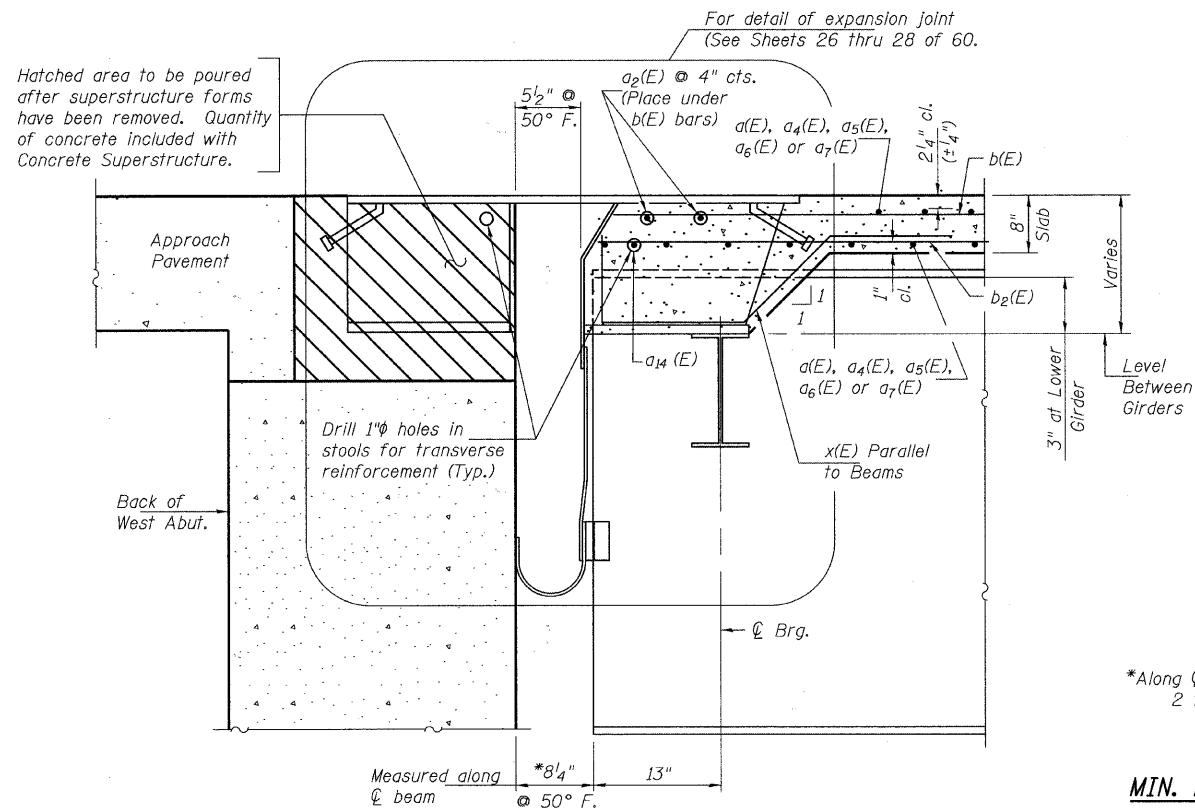


**SUPERSTRUCTURE  
BILL OF MATERIAL**

Bar	No.	Size	Length	Shape
a(E)	1242	#5	41'-9"	—
a1(E)	819	#5	40'-9"	—
a2(E)	12	#6	10'-3"	—
a3(E)	2	#6	32'-1"	—
a4(E)	371	#5	14'-0"	—
a5(E)	315	#5	10'-0"	—
a6(E)	186	#5	6'-0"	—
a7(E)	65	#5	4'-0"	—
a8(E)	621	#6	8'-6"	—
a9(E)	32	#5	1'-6"	—
a10(E)	9	#6	9'-4"	—
a11(E)	12	#6	8'-7"	—
a12(E)	8	#6	32'-1"	—
a13(E)	1242	#6	6'-0"	—
a14(E)	6	#5	10'-6"	—
b(E)	965	#5	32'-9"	—
b1(E)	561	#6	26'-6"	—
b2(E)	1120	#5	28'-0"	—
b3(E)	318	#5	25'-4"	—
b4(E)	40	#5	25'-7"	—
d(E)	1350	#5	5'-6"	—
d1(E)	671	#5	7'-6"	—
d2(E)	679	#5	7'-6"	—
d3(E)	15	#6	4'-5"	—
d4(E)	25	#6	10'-3"	—
e(E)	14	#4	17'-0"	—
e1(E)	182	#4	18'-4"	—
e2(E)	128	#4	19'-2"	—
e3(E)	70	#4	18'-6"	—
e4(E)	16	#4	23'-10"	—
e5(E)	12	#8	32'-9"	—
e6(E)	18	#8	32'-3"	—
e7(E)	24	#4	24'-3"	—
e8(E)	16	#8	19'-2"	—
e9(E)	35	#4	18'-0"	—
e10(E)	35	#4	18'-2"	—
e11(E)	7	#4	15'-9"	—
e12(E)	7	#4	18'-2"	—
x(E)	56	#5	5'-1"	—
x1(E)	24	#5	6'-7"	—
Reinforcement Bars, Epoxy Coated	Pound	245,900		
Concrete Superstructure	Cu. Yd.	904.1		
Bridge Deck Grooving	Sq. Yd.	2,361		
Protective Coat	Sq. Yd.	3,990		

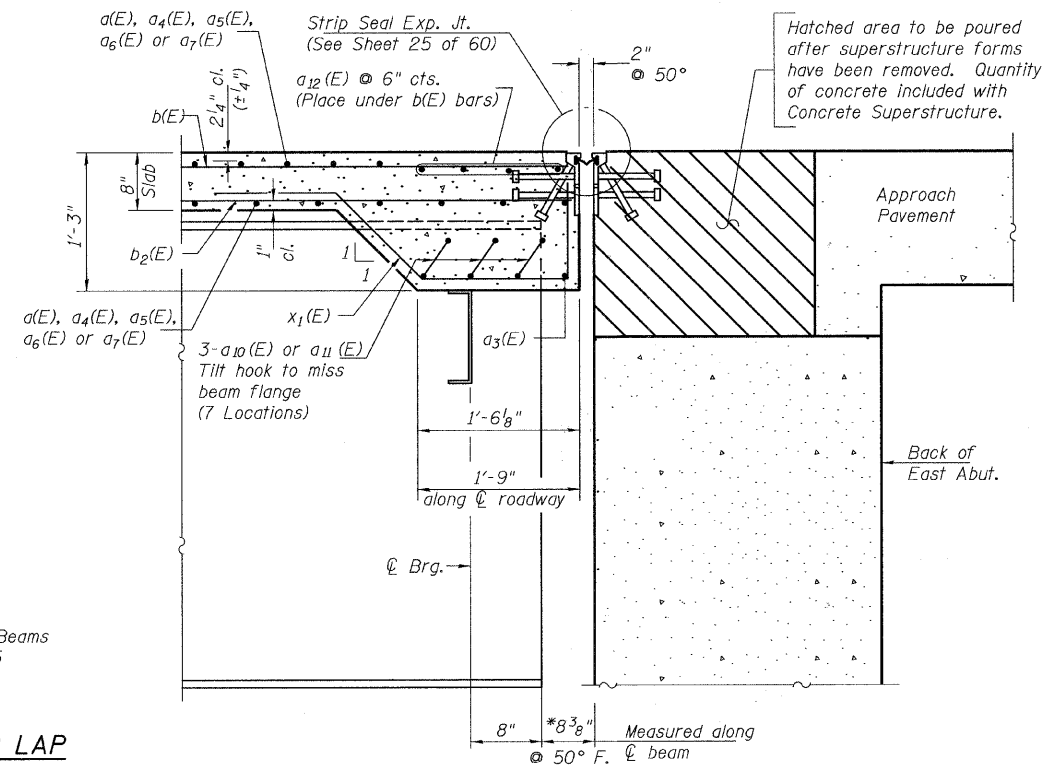


**SECTION A-A  
(WEST ABUTMENT)**  
(At Rt. Angles to Bk. of abut. Unless Noted)

\*Along  $\phi$  of Beams  
2 thru 5

**MIN. BAR LAP**

- (Slab)
- #5 = 2'-2"
- #6 = 2'-7"
- (Parapet)
- #4 = 1'-4"
- #5 = 1'-8"
- #8 = 3'-5"



**SECTION B-B  
(EAST ABUTMENT)**  
(At Rt. Angles to Bk. of abut. Unless Noted)

DESIGNED	JOH
CHECKED	BAN
DRAWN	TC
CHECKED	JOH

25458019

SHEET NO. 19	RTE.	SECTION	COUNTY	TOTAL SHEETS	SHEET NO.
	TR 55	90-16103-01-BR	WILL	255	163
60 SHEETS	SN 099-4105		CONTRACT NO. 83126		
FED. ROAD DIST. NO. 7 ILLINOIS			FED. AID PROJECT BRS-		

**SUPERSTRUCTURE DETAILS  
STRUCTURE NO. 099-4105**