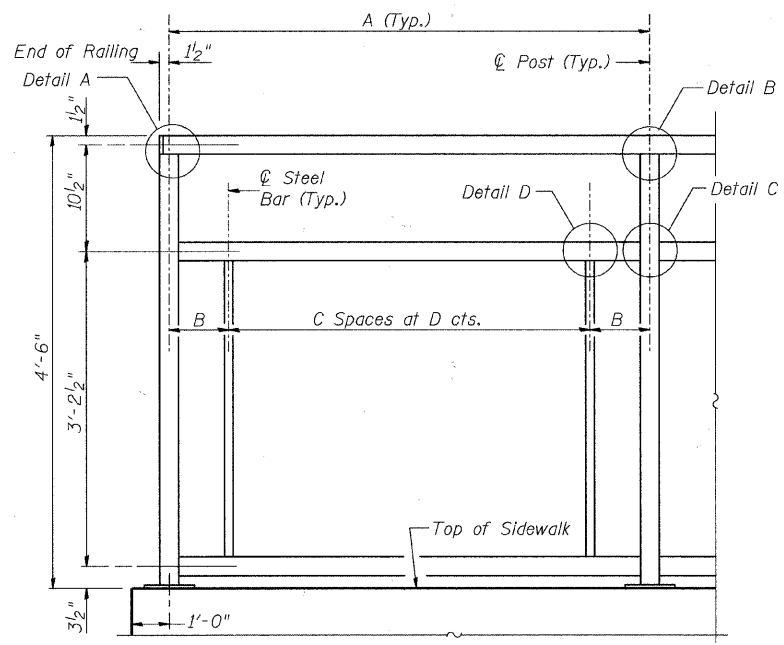
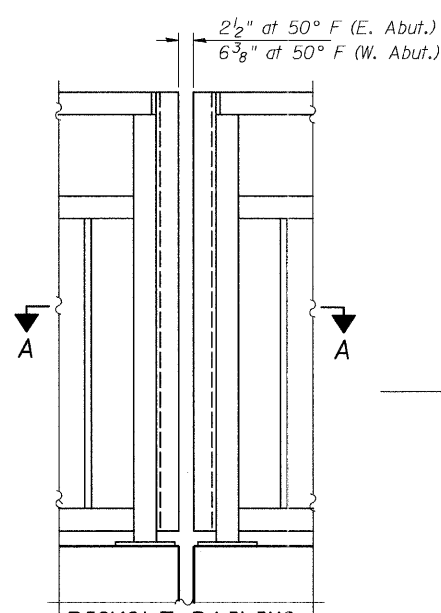


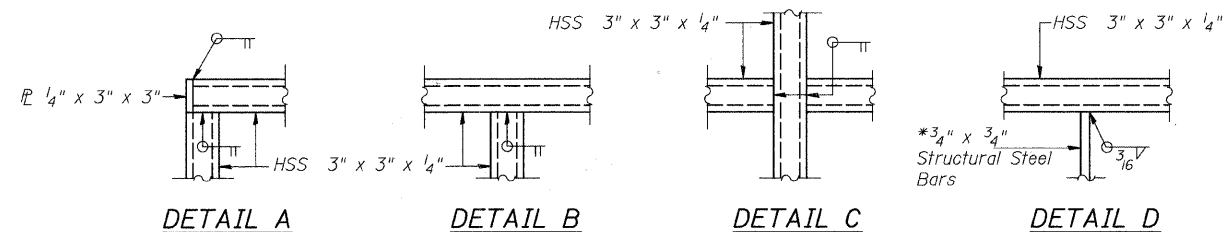
See Sheets 20, 40, 43 and 51 of 60 for Post Spacing



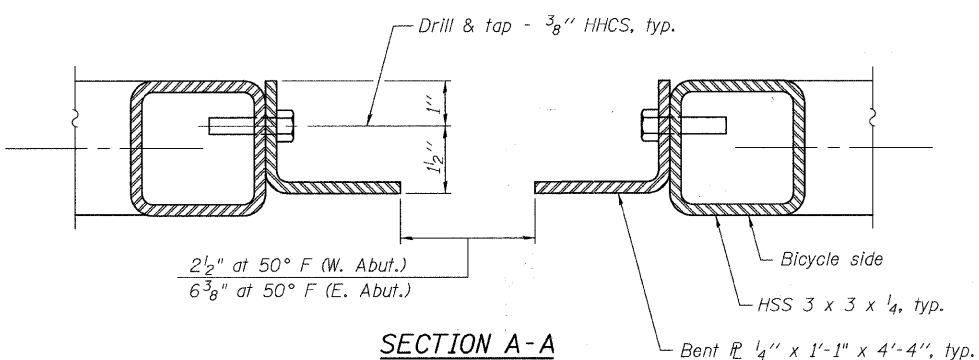
BICYCLE RAILING ELEVATION



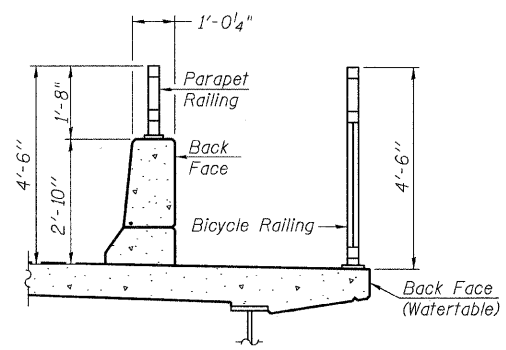
BICYCLE RAILING AT EXPANSION



* Structural steel bars shall conform to the requirements of AASHTO M 270 Grade 50.

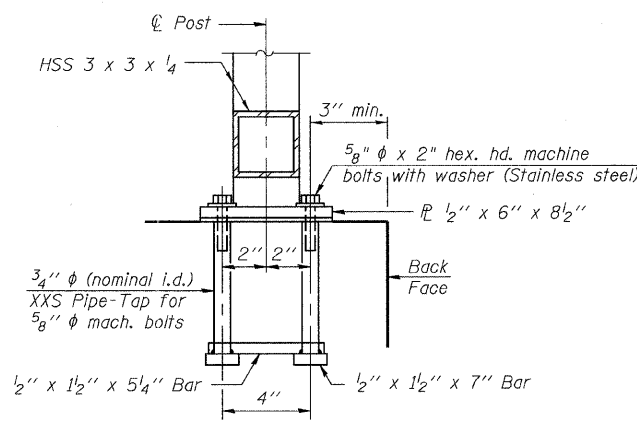
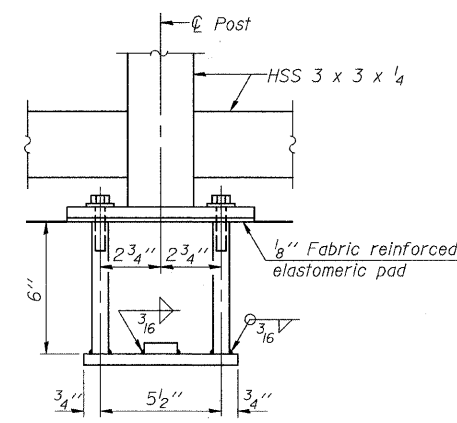


SECTION A-A



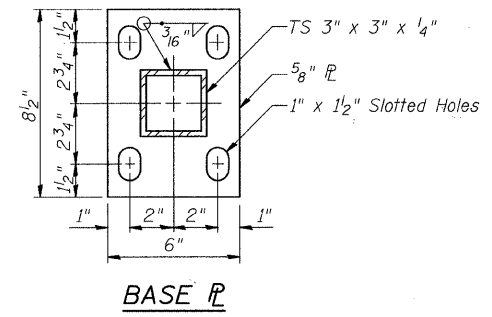
SECTION THRU DECK

Panel	A	B	C	D
Bridge 1	7'-10 1/2"	6"	15	5 1/2"
Bridge 2-31	9'-4"	5"	17	6"
Bridge 32-66	9'-3"	4 1/2"	17	6"
Bridge 67	8'-7 5/8"	5 1/6"	17	5 1/2"
West Approach	8'-0"	6"	14	6"
West Approach	6'-0"	6"	10	6"
East Approach	6'-0"	6"	10	6"
East Approach	8'-0"	6"	14	6"

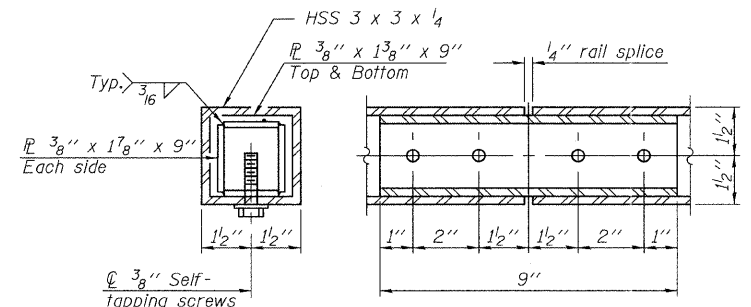


ANCHOR BOLT DETAILS

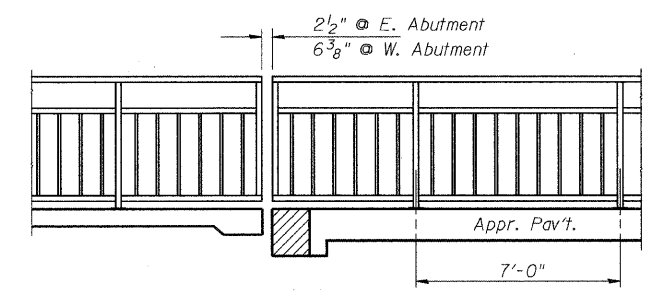
In lieu of the cast-in-place anchor device shown, the Contractor has the option of drilling and setting 5/8" φ anchor rods according to Article 509.06 of the Standard Specifications. Embedment shall be according to the manufacturer's specifications.



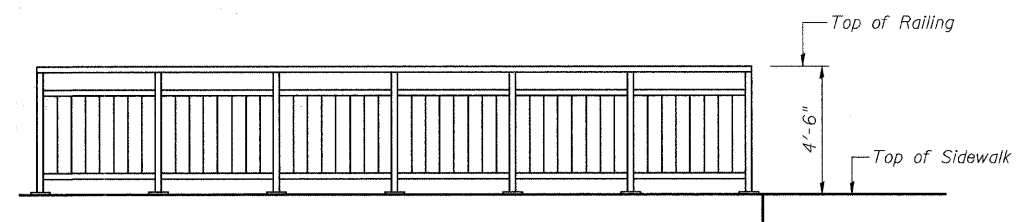
BASE PL



RAIL SPLICE



RAIL ELEVATION AT ABUTMENTS



BICYCLE RAILING SIDE VIEW

Note: All post, railing, splices, anchor devices, and bent plates shall be painted using the Inorganic Zinc Rich Primer/Acrylic/Acrylic Paint System.

BILL OF MATERIAL

Item	Unit	Quantity
Bicycle Railing	Foot	679

BICYCLE RAILING DETAILS STRUCTURE NO. 099-4105

SHEET NO. 24 60 SHEETS	RTE.	SECTION	COUNTY	TOTAL SHEETS	SHEET NO.
	TR 55	90-16103-01-BR	WILL	251	165
	SN 099-4105		CONTRACT NO. 83126		
FED. ROAD DIST. NO. 7 ILLINOIS			FED. AID PROJECT BRS-		

DESIGNED	JOH
CHECKED	BAN
DRAWN	TC
CHECKED	JOH