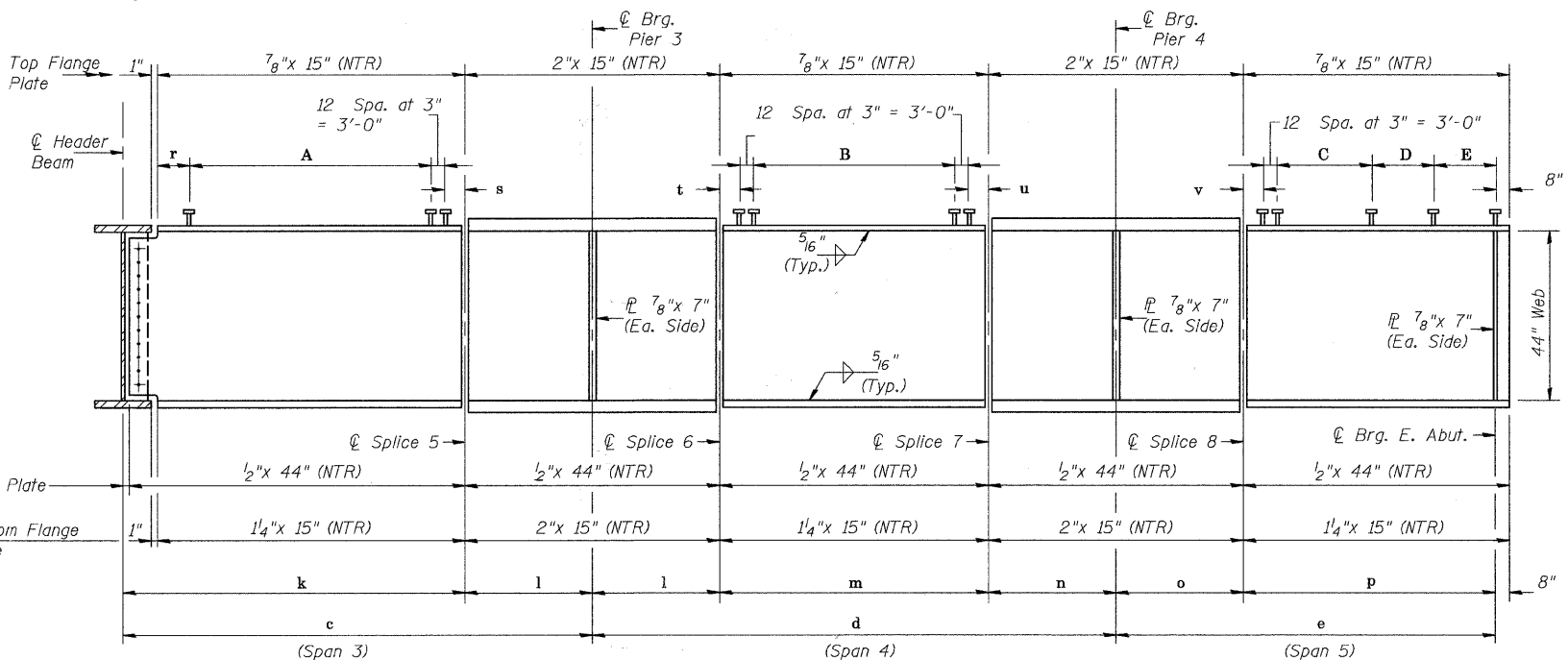


ELEVATION - GIRDERS 2, 3, 4 & 5

Load carrying components designated "NTR" shall conform to the Supplemental Requirements for Notch Toughness, Zone 2.

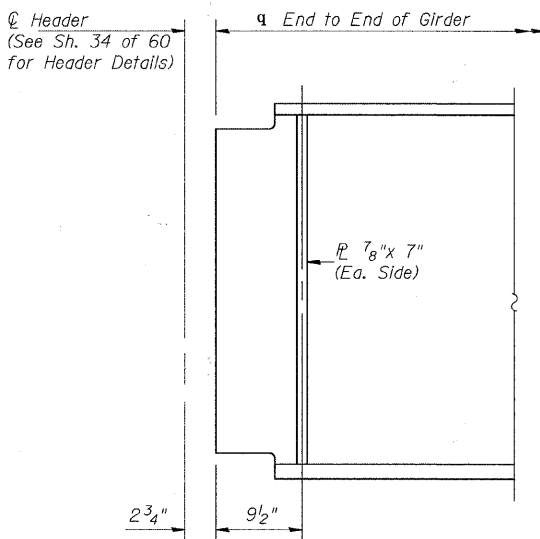
SHEAR STUD SPACING

Location	Girders 2, 3, 4 & 5	Girder 2A	Girder 5A
A	28 Spa. @ 9" = 21'-0"	78 Spa. @ 11 1/2" = 74'-9"	78 Spa. @ 11 1/4" = 73'-1 1/2"
B	20 Spa. @ 1'-1" = 21'-8"	79 Spa. @ 9" = 59'-3"	79 Spa. @ 9" = 59'-3"
C	38 Spa. @ 10 1/2" = 33'-3"	38 Spa. @ 10 1/2" = 33'-3"	38 Spa. @ 10 1/2" = 33'-3"
D	79 Spa. @ 9" = 59'-3"	20 Spa. @ 1'-1" = 21'-8"	20 Spa. @ 1'-1" = 21'-8"
E	79 Spa. @ 9 1/2" = 62'-6 1/2"	28 Spa. @ 9 1/2" = 22'-2"	29 Spa. @ 9" = 21'-9"
F	79 Spa. @ 9" = 59'-3"		



ELEVATION - GIRDERS 2A AND 5A

Load carrying components designated "NTR" shall conform to the Supplemental Requirements for Notch Toughness, Zone 2.



END OF GIRDER 2A & 5A

DESIGNED	JOH
CHECKED	BAN
DRAWN	TC
CHECKED	JOH

2545B032

For Sections A-A, B-B & E-E, See Sheet 34 of 60.
For dimensions r thru v, See Sheet 31 of 60.

BEAM DETAILS
STRUCTURE NO. 099-4105

SHEET NO. 32	RTE.	SECTION	COUNTY	TOTAL SHEETS	SHEET NO.
	TR 55	90-16103-01-BR	WILL	255	176
60 SHEETS	SN 099-4105		CONTRACT NO. 83126		
FED. ROAD DIST. NO. 7 ILLINOIS			FED. AID PROJECT BRS-		