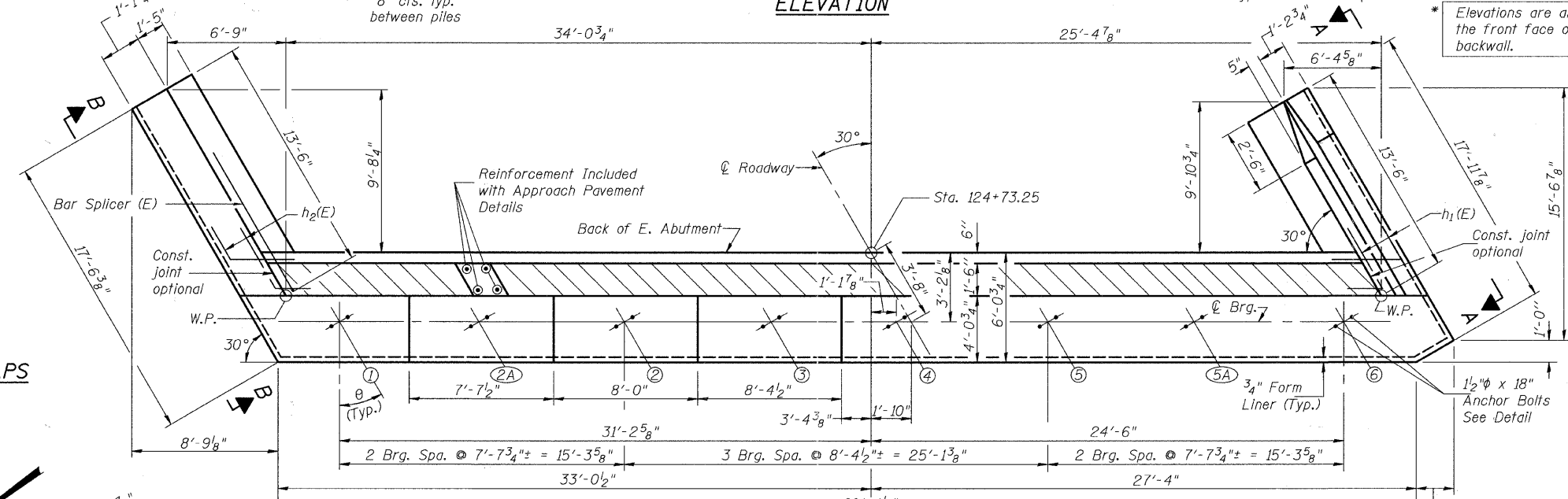
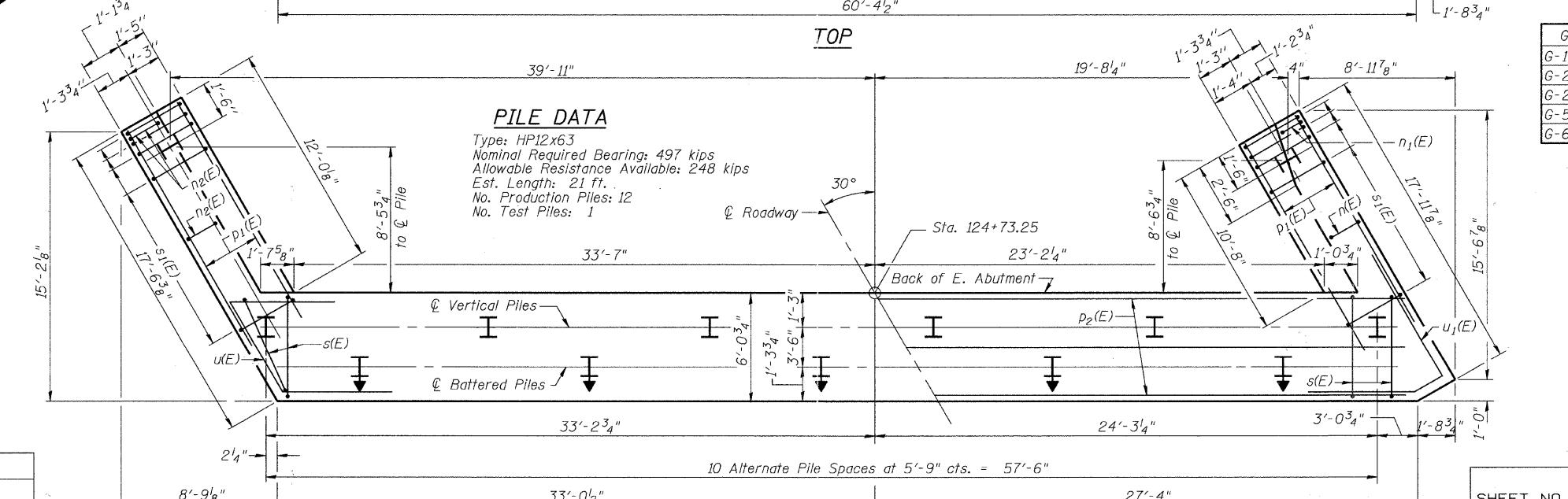


ELEVATION



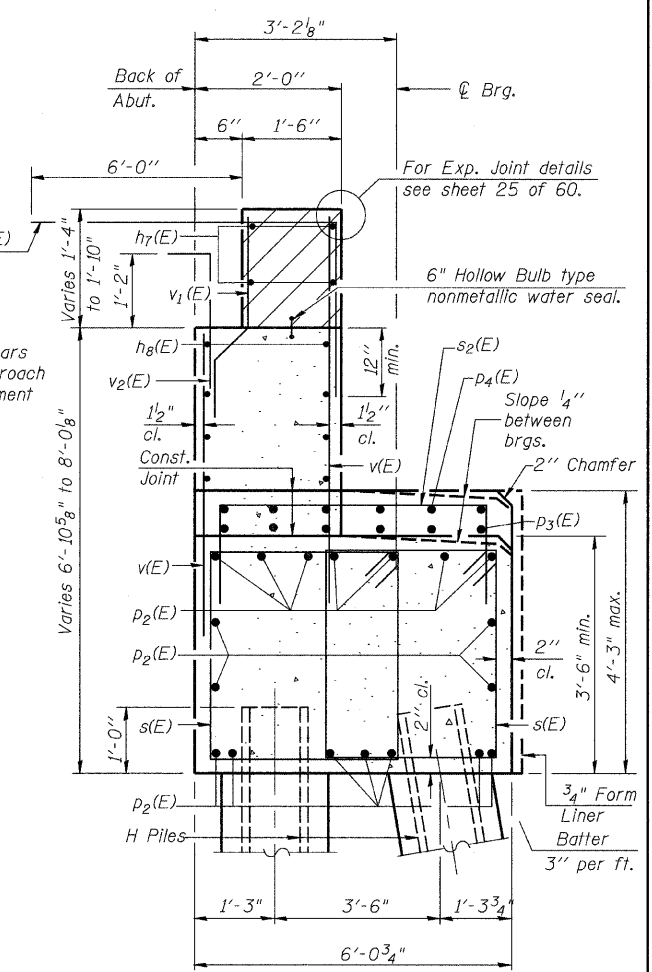
TOP



PLAN-PILE CAP

**PILE DATA**

Type: HP12x63  
 Nominal Required Bearing: 497 kips  
 Allowable Resistance Available: 248 kips  
 Est. Length: 21 ft.  
 No. Production Piles: 12  
 No. Test Piles: 1

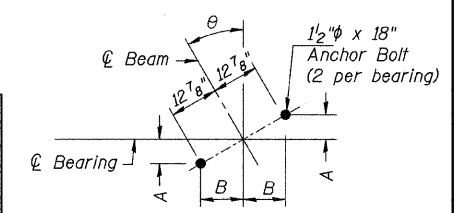


SECTION THRU ABUT.

(@ Rt. L's)

**ANCHOR BOLT DIMENSIONS**

Girder No.	θ	A	B
G-1	30.99°	6 <sup>5</sup> / <sub>8</sub> "	11"
G-2A	30.49°	6 <sup>1</sup> / <sub>2</sub> "	11 <sup>1</sup> / <sub>8</sub> "
G-2 thru G-5	30°	6 <sup>7</sup> / <sub>8</sub> "	11 <sup>1</sup> / <sub>8</sub> "
G-5A	29.51°	6 <sup>3</sup> / <sub>8</sub> "	11 <sup>1</sup> / <sub>4</sub> "
G-6	28.99°	6 <sup>1</sup> / <sub>4</sub> "	11 <sup>1</sup> / <sub>4</sub> "



ANCHOR BOLT LAYOUT

Notes:  
 Hatched area to be poured after superstructure false work has been removed. Quantity of concrete included with Concrete Superstructure.  
 Space reinforcement in cap to miss anchor bolts.  
 Pour steps monolithically with cap.  
 Quantity of concrete in end post included with Concrete Superstructure on sheet 19 of 60.  
 For Pile and Concrete Encasement details, see sheet 50 of 60.  
 For Bar Splicer Details see sheet 49 of 60.

**EAST ABUTMENT  
 STRUCTURE NO. 099-4105**

DESIGNED	JOH
CHECKED	BAN
DRAWN	TC
CHECKED	JOH

SHEET NO. 42	RTE.	SECTION	COUNTY	TOTAL SHEETS	SHEET NO.
	TR 55	90-16103-01-BR	WILL	255	186
60 SHEETS	SN 099-4105		CONTRACT NO. 83126		
	FED. ROAD DIST. NO. 7 ILLINOIS		FED. AID PROJECT BRS-		