

CITY OF FREEPORT  
SEC 11-P4000-01-BT  
PROJECT TE-00D2 (147)

# PECATONICA PRAIRIE PATH

## FOR FREEPORT PARK DISTRICT FREEPORT, ILLINOIS

PROPOSED SHARED USE PATH

SECTION: 11-P4000-01-BT  
PROJECT TE-00D2 (147)  
STEPHENSON COUNTY  
APRIL 2011

JOB No. C-92-129-11  
CONTRACT No. 85543  
ITEP No. 201013

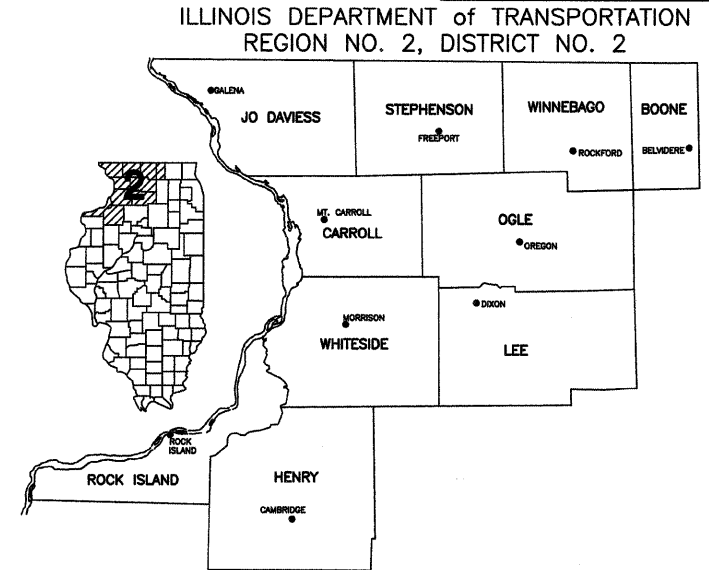
NET LENGTH 1,818.93 FEET = 0.34 MILES

INDEX OF SHEETS

SHEET NO.	TITLE
1	LOCATION MAP, INDEX OF SHEETS, STANDARDS
2	SUMMARY OF QUANTITIES, TYPICAL SECTION, GENERAL NOTES
3	STANDARD LEGEND
4-8	PROPOSED PATH PLAN & PROFILE
9-13	PROPOSED PATH CROSS SECTIONS

STATE STANDARDS

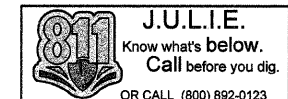
- 280001-05 TEMPORARY EROSION CONTROL SYSTEMS
- 542401-01 METAL END SECTION FOR PIPE CULVERTS
- 701001-02 OFF-RD OPERATIONS, 2L, 2W, MORE THAN 4.5m (15') AWAY
- 701006-03 OFF-RD OPERATIONS, 2L, 2W, 15' (4.5 m) TO 24" (600 mm) FROM PAVEMENT EDGE
- 701801-04 LANE CLOSURE MULTILANE 1W OR 2W CROSSWALK OR SIDEWALK CLOSURE
- 701901-01 TRAFFIC CONTROL DEVICES
- 720001-01 SIGN PANEL MOUNTING DETAILS
- 720011-01 METAL POSTS FOR SIGNS, MARKERS & DELINEATORS
- 728001-01 TELESCOPING STEEL SIGN SUPPORT
- 729001-01 APPLICATIONS OF TYPES A & B METAL POSTS (FOR SIGNS & MARKERS)
- 780001-02 TYPICAL PAVEMENT MARKINGS



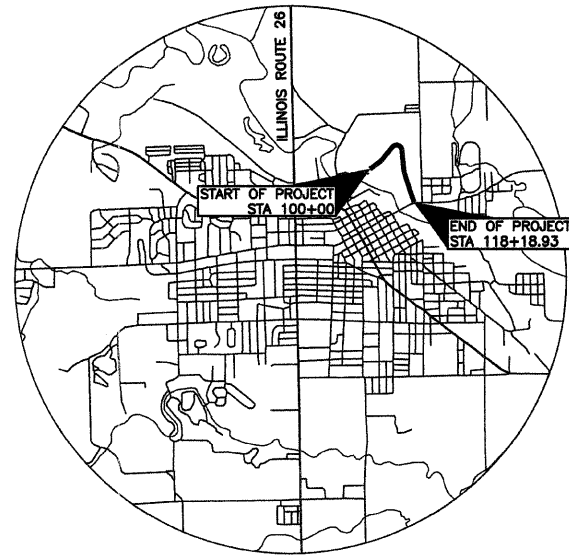
UTILITIES

UTILITY TYPE	COMMON NAME	CONTACT INFO
ELECTRIC	COMMONWEALTH EDISON	1(866)639-3532
TELEPHONE	VERIZON	1(800)264-1000
WATER & SEWER	CITY OF FREEPORT WATER & SEWER COMMISSION	230 W. STEPHENSON ST. FREEPORT, ILLINOIS 1(815)443-2141
GAS	NICOR GAS CO.	1(800)427-6228
CABLE	COMCAST	1(800)266-2278

(CONTRACTOR TO BE RESPONSIBLE FOR ANY COORDINATION NEEDED FOR UTILITY ADJUSTMENT)



Signed Paul D. Ertmer Date 5-23-11  
Paul D. Ertmer, P.E.  
Expires November 30, 2011



N.T.S.

LOCATION MAP



**FEHR-GRAHAM & ASSOCIATES, LLC**  
ENGINEERING AND SCIENCE CONSULTANTS

221 E. MAIN ST. SUITE 200 FREEPORT, IL 61032 (815)235-7643  
1920 DAMLER RD. ROCKFORD, IL 61112 (815)394-4700  
515 LINCOLN HIGHWAY ROCKELLE, IL 61068 (815)562-9087  
1107 16th AVENUE MONROE, WI 53566 (608)329-6400  
4440 ASH GROVE DR. SPRINGFIELD, IL 62711 (217)793-8800

ILLINOIS PROFESSIONAL DESIGN FIRM NUMBER: 184003525

AGENCY RESPONSIBLE FOR LETTING

APPROVED 5-24-11  
Stephen Ehlbeck  
FREEPORT PARK DISTRICT  
PASSED 6-17-11  
Paul D. Ertmer  
DISTRICT #2 ENGINEER OF LOCAL ROAD & STREETS  
RELEASING FOR BID BASED ON LIMITED REVIEW 6-17-11  
Eric J. Theilacker  
DEPUTY DIRECTOR OF HIGHWAYS, REGION #2 ENGINEER

**SUMMARY OF QUANTITIES  
CONSTRUCTION TYPE CODE: 0028**

ITEM NO.	DESCRIPTION	UNIT	QUANTITY
20100110	TREE REMOVAL (6-15 UNITS DIAMETER)	UNIT	6
20100210	TREE REMOVAL (OVER 15 UNITS DIAMETER)	UNIT	36
20200100	EARTH EXCAVATION	C.Y.	650
21101615	TOPSOIL FURNISH & PLACE, 4"	S.Y.	500
21101505	TOPSOIL EXCAVATION & PLACEMENT	C.Y.	224
25000100	SEEDING, CLASS 1	AC.	2.33
25100115	MULCH METHOD 2	AC.	2.33
28000400	PERIMETER EROSION BARRIER	FT.	3753
35102000	AGGREGATE BASE COURSE, TYPE B, 8"	S.Y.	15627
40600100	BITUMINOUS MATERIALS, PRIME COAT	GAL.	810
40603310	HMA SURFACE COURSE, MIX "C", N50	TON	243
542D0217	PIPE CULVERT, CLASS D, TYPE I, 12"	FT.	25
54215547	METAL END SECTION, 12"	EA.	2
56109210	WATER VALVES TO BE ADJUSTED	EA.	2
67100100	MOBILIZATION	L.S.	1
72000100	SIGN PANEL, TYPE 1	S.F.	9.75
72900100	METAL POST, TYPE A	FT.	22.5
* 78001110	PAINT PAVEMENT MARKING, 4"	FT.	450
X7010216	TRAFFIC CONTROL AND PROTECTION SPECIAL	L.S.	1

\* SPECIALTY ITEMS

**GENERAL NOTES**

CONTRACTOR IS RESPONSIBLE FOR MAINTAINING A FINAL GRADE THAT IS SUITABLE FOR SEEDING AND LANDSCAPING (MINIMUM OF 4" OF TOPSOIL).

THE LOCATIONS FOR EXISTING UTILITIES AS SHOWN ON THE PLANS ARE BASED ON BEST INFORMATION AVAILABLE, BUT NOT GUARANTEED. IT SHALL BE THE CONTRACTOR'S RESPONSIBILITY TO ASCERTAIN THEIR EXACT LOCATION FROM THE UTILITY COMPANIES AND BY FIELD INSPECTION.

PROTECT OVERHEAD UTILITY LINES AND UNDERGROUND LINES DURING ALL CONSTRUCTION.

SPECIFICATIONS FOR THIS PROJECT SHALL BE IDOT "STANDARD SPECIFICATIONS FOR ROAD AND BRIDGE CONSTRUCTION", LATEST EDITION; SPECIAL PROVISIONS, "STANDARD SPECIFICATIONS FOR WATER AND SEWER MAIN CONSTRUCTION IN ILLINOIS", LATEST EDITION.

ANY CONSTRUCTION OR WORK INDICATED IN THE PLANS OR SPECIFIED IN THE PROPOSAL SHALL BE COMPLETED BY THE CONTRACTOR. ANY CONSTRUCTION OR WORK NOT INCLUDED IN A PAY ITEM SHALL BE INCIDENTAL TO THE PROJECT COST.

QUANTITIES SHOWN ARE FOR INFORMATION ONLY, CONTRACTOR MUST VERIFY. FINAL PAYMENT SHALL BE ON AN AS-MEASURED BASIS.

CONTRACTOR SHALL VERIFY ALL UNDERGROUND UTILITY LOCATIONS IN FIELD. THE CONTRACTOR SHALL BE RESPONSIBLE FOR CONTACTING THE UTILITY COMPANY FOR ANY ADJUSTMENTS.

CALL J.U.L.I.E. (1-800-892-0123) FOR UTILITY LOCATION INFORMATION PRIOR TO EXCAVATION.

ALL EXCAVATION FOR STRUCTURES SHALL BE KEPT DEWATERED DURING CONSTRUCTION OPERATIONS UNTIL BACKFILL IS IN PLACE.

TRENCH BACKFILL SHALL BE USED IN LOCATIONS WHERE THERE IS AN EXISTING OR NEW PERMANENT SURFACE.

ALL EXCESS EARTH EXCAVATION TO BE DISPOSED OF BY CONTRACTOR OFF-SITE.

CONTRACTOR SHALL BE REQUIRED TO MAINTAIN COMPLIANCE WITH THE STORM WATER POLLUTION PREVENTION PLAN AS PREPARED BY FEHR-GRAHAM.

LOCATION OF PROPERTY LINES IS APPROXIMATE.

RIGHT OF WAY LINES INDICATED ON THE PLANS ARE APPROXIMATE.

THE CONTRACTOR SHALL CAREFULLY PRESERVE ALL EXISTING PROPERTY MARKERS UNTIL AN AUTHORIZED SURVEYOR HAS REFERENCED THEIR LOCATION. PROPERTY MARKERS DAMAGED BY THE CONTRACTOR SHALL BE REPLACED AT THE EXPENSE OF THE CONTRACTOR.

ALL PROPERTY CORNER MONUMENTATION SHALL BE RESTORED TO THE CONDITION EXISTING BEFORE CONSTRUCTION BEGAN.

CONTRACTOR SHALL RESTORE ALL DISTURBED GRASS AREAS.

THE CONTRACTOR SHALL REMOVE EXISTING STREET SIGNS AND POSTS AND STOCKPILE THEM AT A SAFE LOCATION TO PREVENT DAMAGE AND THEFT. THIS WORK SHALL BE CONSIDERED INCIDENTAL TO THE PROJECT.

CONTRACTOR SHALL PROTECT AND PREVENT DAMAGE TO EXISTING TREES WHICH ARE NOT INDICATED ON THE PLANS TO BE REMOVED.

PROPERTY LINE LOCATIONS ARE FROM RECORDED DOCUMENTS AND HAVE NOT BEEN FIELD VERIFIED.

CONSTRUCTION ACCESS TO BE FROM HENDERSON ROAD ON EXISTING GRAVEL DRIVE. CONTRACTOR TO COORDINATE ACCESS WITH CITY OF FREEPORT. ACCESS FROM STEPHENSON STREET FOR THIS PROJECT WILL BE STRICTLY PROHIBITED.

**SUBGRADE PREPARATION**

TOPSOIL OR OTHERWISE UNSUITABLE SOIL SHALL BE STRIPPED. STOCKPILE TOPSOIL IN AREA APPROVED BY OWNER AND REMOVE UNSUITABLE MATERIAL AND EXCESS SOIL FROM SITE.

THE UPPER 12 INCHES OF SUBGRADE BELOW PAVEMENTS, OR NEW FILLS SHALL BE BROUGHT TO WITHIN ±2% OF OPTIMUM MOISTURE AND COMPACTED TO NOT LESS THAN 90% OF MAXIMUM DENSITY. OPTIMUM MOISTURE IS ESTIMATED TO BE IN THE RANGE OF 8% TO 9% DURING COOL OR WET SEASONS, THEREFORE IT MAY BE NECESSARY TO DISK AND AERATE THE EXISTING UPPER 12 INCHES OF SOIL TO ACHIEVE OPTIMUM MOISTURE CONTENT.

NO FILL OR BACKFILL SHALL CONSIST OF OR BE PLACED OVER FROZEN, MUDDY, OR OTHERWISE UNSTABLE MATERIAL.

ALL FILL OR BACKFILL PLACED BENEATH EXTERIOR PAVED AREAS SHALL BE COMPACTED TO NOT LESS THAN 90% OF MAXIMUM DENSITY.

ALL FILL AND BACKFILL SHALL BE PLACED IN LIFTS NOT GREATER THAN 8 INCHES IN THICKNESS, LOOSE MEASUREMENT, PRIOR TO COMPACTION.

AREAS OF SOFT OR UNSTABLE SUB-BASE SHALL BE UNDERCUT A MINIMUM OF 12" AND AGGREGATE BASE (CA-2 AND IDOT BREAKER RUN) PLACED AND COMPACTED TO 90% OF MAXIMUM DENSITY.

ALL DENSITY MEASUREMENTS REFERENCED ABOVE SHALL BE IN ACCORDANCE WITH ASTM DESIGNATION D1557-78 MODIFIED PROCTOR METHOD.

ALL LABORERS AND EQUIPMENT OPERATORS ON SITE DURING THE WORK ASSOCIATED WITH THE EARTH EXCAVATION IN THE BID SHALL BE HAZWOPER CERTIFIED. DOCUMENTATION SUPPORTING THIS SHALL BE SUPPLIED TO THE ENGINEER AND OWNER PRIOR TO ANY WORK BEING PERFORMED BY CONTRACTOR IN REGARD TO THIS PAY ITEM.

ALL MATERIAL EXCAVATED AS PART OF THE EARTHWORK EXCAVATION SHALL BE WASTED ON SITE. ALL ACTIVITIES INVOLVED WITH THE EARTH EXCAVATION SHALL BE DONE IN ACCORDANCE WITH SECTION 669 OF THE STANDARD SPECIFICATIONS FOR ROAD AND BRIDGE CONSTRUCTION, LATEST EDITION.

NOTE: ALL WORK PERFORMED BY CONTRACTOR OR ANY SUBCONTRACTOR MUST BE PERFORMED IN ACCORDANCE WITH 29 CFR 1910.120 USING WORKERS TRAINED IN ACCORDANCE WITH THE PROVISIONS OF 29 CFR 1910.120. ALL PERSONNEL AND EQUIPMENT SHALL COMPLY WITH ALL SAFETY AND HEALTH REQUIREMENTS SET FORTH IN APPLICABLE FEDERAL, STATE, AND LOCAL LAWS AND REGULATIONS.

A COMPLETED REMEDIAL ACTION COMPLETION REPORT HAS BEEN DONE FOR THIS SITE AND CAN BE VIEWED AT THE OFFICE OF THE ENGINEER AT 221 E. MAIN ST., SUITE 200, FREEPORT, IL 61032

**EROSION AND SEDIMENTATION CONTROL NOTES**

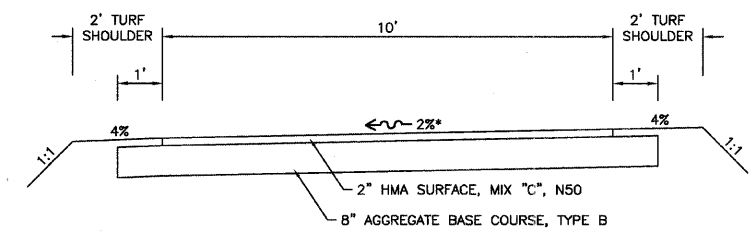
EROSION CONTROL PRACTICES SHALL BE CONSTRUCTED IN ACCORDANCE WITH STANDARD SPECIFICATIONS FOR SOIL EROSION AND SEDIMENT CONTROL AS CONTAINED IN IEPA/WPC/ 87-012 OR CURRENT EDITION AND ACCORDING TO PROCEDURES AND STANDARDS FOR URBAN SOIL EROSION AND SEDIMENTATION CONTROL IN ILLINOIS, LATEST EDITION AND ACCORDING TO THE STANDARDS OF THE CITY OF FREEPORT.

A TEMPORARY SEDIMENT BARRIER OF STRAW BALES OR FILTER FABRIC SHALL BE PLACED AROUND EACH STORM SEWER INLET POTENTIALLY IMPACTED BY WORK. (SEE DETAILS)

FABRIC FILTER FENCES OR STRAW BALES SHALL BE PLACED AROUND ANY SOIL STOCK PILE WITH MORE THAN 10 CU. YD. OF MATERIAL. AT THE END OF EACH WORK DAY, THE CONTRACTOR SHALL SWEEP OR CLEAN (NOT FLUSH) ANY CONSTRUCTION SOIL MATERIAL FROM THE STREET TO PREVENT TRACKING.

THE CONTRACTOR SHALL INSPECT EROSION CONTROL STRUCTURES DAILY AND IMMEDIATELY AFTER ANY MAJOR STORM.

THE ENGINEER SHALL DETERMINE THE ADEQUACY OF THE CONTRACTOR'S EROSION CONTROL EFFORTS. OWNER SHALL HAVE FULL AUTHORITY TO SUSPEND OR LIMIT THE CONTRACTORS OPERATIONS PENDING ADEQUATE PERFORMANCE OF EROSION CONTROL MEASURES.



**SURFACE**

PG 58-22
3.0 @ N50
IL 9.5 OR 9.5 FG
C
0.0
112 LBS/SY/IN

\* SLOPE 2% LEFT OR RIGHT AS INDICATED ON THE CROSS-SECTION PAGES. ALL TRANSITIONS TO BE 50' IN LENGTH.

**TYPICAL SECTION**  
SCALE: 1"=2'

**FEHR-GRAHAM & ASSOCIATES, LLC**  
ENGINEERING AND SCIENCE CONSULTANTS  
FREEPORT, IL ROCKFORD, IL ROCHELLE, IL SPRINGFIELD, IL MONROE, WI  
ILLINOIS DESIGN FIRM NO. 184-003525  
© 2011 FEHR-GRAHAM & ASSOCIATES

OWNER/DEVELOPER:  
FREEPORT PARK DISTRICT  
1122 SOUTH BURCHARD STREET  
FREEPORT, ILLINOIS

PROJECT AND LOCATION:  
PECATONICA PRAIRIE PATH  
FREEPORT, ILLINOIS

DRAWN BY: B.C.  
APPROVED BY: P.E.  
DATE: 04/15/11  
SCALE:

REVISIONS		
REV. NO.	DESCRIPTION	DATE
1	REVISION TO EARTHWORK NOTES	06/03/11

DRAWING:  
SUMMARY OF QUANTITIES, TYPICAL SECTION,  
GENERAL NOTES

JOB NUMBER:  
11-274

SHEET NUMBER:  
2 of 13

ABBREVIATIONS

<	ANGLE	MAX	MAXIMUM
AC	AGGREGATE BASE COURSE	MH	MANHOLE
ACI	ACRE(S)	MIN	MINIMUM
ACI	AMERICAN CONCRETE INSTITUTE	MJ	MECHANICAL JOINT
AGR	AGGREGATE	MTL	METAL
AISC	AMERICAN INSTITUTE OF STEEL CONSTRUCTION	N	NORTH
ALT	ALTERNATE	No. OR #	NUMBER
ARCH	ARCHITECT	NOM	NOMINAL
ASPH	ASPHALT	NTS	NOT TO SCALE
ASTM	AMERICAN SOCIETY OF TESTING AND MATERIALS	OC	ON CENTER
B	BALL VALVE	OD	OUTSIDE DIAMETER
BFP	BACKFLOW PREVENTER	OO	OUTSIDE TO OUTSIDE
BIT	BITUMINOUS	OPNG	OPENING
BLDG	BUILDING	OPP	OPPOSITE
BLK	BLOCKING	PC	POINT OF CURVATURE
BM	BENCHMARK	PCF	POUNDS PER CUBIC FOOT
BOT	BOTTOM	PDP	PERFORATED DRAIN PIPE
BSMT	BASEMENT	PE	POLYETHYLENE PIPE
BV	BUTTERFLY VALVE	PI	POINT OF INTERSECTION
B-B	BACK-TO-BACK OF CURB DIMENSION	PL	PLATE
CL or C	CENTERLINE	PLG	PLUG VALVE
C TO C	CENTER TO CENTER	PLP	POLYPROPYLENE PIPE
C & G	CURB AND GUTTER	PLYWD	PLYWOOD
CF	CUBIC FEET	PM	PRINCIPAL MERIDIAN
CHD	CHORD LENGTH	PNL	PANEL
CI	CAST IRON PIPE	PR	PRESSURE REGULATORS
CHK	CHECK VALVE	PRC	POINT OF REVERSE CURVATURE
CLR	CLEAR	PRESS	PRESSURE
CMP	CORRUGATED METAL PIPE	PR, PROP	PROPOSED
CMU	CONCRETE MASONRY UNIT	PRV	PRESSURE REDUCING VALVE
CTY	COUNTY	PSF	POUNDS PER SQUARE FOOT
CONC	CONCRETE	PSI	POUNDS PER SQUARE INCH
CONT	CONTINUOUS	PSL	PIPE SLEEVE
C-B	CENTERLINE TO BACK OF CURB DIMENSION	PT	POINT OF TANGENCY
COORD	COORDINATE	PLG	PLUG VALVE
CU	COPPER PIPING	PLC	POLYVINYL CHLORIDE (PLASTIC) PIPE
CTRS	CENTERS	R	RADIUS
CY	CUBIC YARDS	RCCP	REINFORCED CONCRETE CYLINDER PIPE
D	DEGREE OF CURVE	RCP	REINFORCED CONCRETE PIPE
DEP	DEPRESSED	RD	ROOF DRAIN
DET	DETAIL	REINF	REINFORCING
DIAG	DIAGONAL	REQD	REQUIRED
DIM	DIMENSION	RFTR	RAFTER
DI	DUCTILE IRON PIPE	RND	ROUND
DN	DOWN	RR	RAILROAD
DNSTR	DOWNSTREAM	RRSP	RAILROAD SPIKE
DWG	DRAWING	RT	RIGHT
E	EAST	R&R	REMOVE AND REPLACE
EJ	EXPANSION JOINT	S	SOUTH
EL, ELEV	ELEVATION	SB	STREAM BED
EP	EDGE OF PAVEMENT	SCHED	SCHEDULE
EQUIP	EQUIPMENT	SEC	SECTION
EQUIV	EQUIVALENT	SF	SQUARE FEET
EW	EACH WAY	SHR	SHOWER
EXP	EXPANSION	SHT	SHEET
EX, EXIST	EXISTING	SHTG	SHEATHING
EXT	EXTERIOR	SPA	SPACING OR SPACES
E =	EXTERNAL DISTANCE	SPEC	SPECIFICATION
FDN	FOUNDATION	SQ	SQUARE
FE	FIELD ENTRANCE	SS	SANITARY SERVICE
FFL	FINISH FLOOR LEVEL	STA	STATION
FIL	FILLET	STD	STANDARD
FIN	FINISH	STL	STEEL
FL	FLOW LINE	STRUCT	STRUCTURAL
FLR	FLOOR	SW	SIDEWALK
FM	FORCE MAIN	SY	SQUARE YARDS
FND	FOUND	SYM	SYMMETRICAL
FRMG	FRAMING	TAN	TANGENT LENGTH
FTG	FOOTING	TBC	TOP BACK OF CURB
F-F	FACE TO FACE	TBM	TEMPORARY BENCH MARK; BASED ON BENCHMARK DATUM
GA	GAUGE	TD	TILE DRAIN
GI	GALVANIZED IRON PIPE	THK	THICK
GRD	GRADE	TR	TREAD
GRS	GRATING SUPPORT	TY	TYPE
GRT	GROUT	TYP	TYPICAL
GV	GATE VALVE	UPSTR	UPSTREAM
GYP	GYPSPUM	UR	URINAL
HSE	HOUSE	USGS	US GEOLOGICAL SURVEY
HC	HORIZONTAL CURVE	VC	VERTICAL CURVE
HNGR	HANGER	VCP	VITRIFIED CLAY PIPE
HORIZ	HORIZONTAL	VERT	VERTICAL
HP	HIGH POINT	VOL	VOLUME
HW	HOT WATER	VPC	VERTICAL POINT OF CURVATURE
HW	HOT WATER HEATER	VPI	VERTICAL POINT OF INTERSECTION
Δ =	CENTRAL ANGLE	VPRC	VERTICAL POINT OF REVERSE CURVATURE
I	MOMENT OF INERTIA	VPT	VERTICAL POINT OF TANGENCY
ID	INSIDE DIAMETER	W	WEST
INT	INTERIOR	WC	WATER CLOSET
INV	INVERT ELEVATION; BASED ON BENCH MARK DATUM	WF	WIDE FLANGE
IP	IRON PIPE	WM	WATER MAIN
JST	JOIST	WMQ	WATER MAIN QUALITY
LAT	LENGTH OF CURVE	WST	WEIGHT
LAV	LAVATORY	WP	WEATHER PROOF
LF	LINAL FEET	WS	WATER SERVICE
LP	LOW POINT	WWF	WELDED WIRE FABRIC
LT	LEFT OF SURVEY BASE LINE	W	WITH
		W/O	WITHOUT
		XP	EXPLOSION PROOF

(TRAFFIC SIGNAL RELATED)

EXISTING	PROPOSED	
		CONTROLLER
		MAST ARM ASSEMBLY AND POLE
		SIGNAL HEAD AND POST
		SIGNAL HEAD
		PEDESTRIAN HEAD
		PEDESTRIAN PUSH-BUTTON
		HAND HOLE
		DOUBLE HAND HOLE
		HAND HOLE OR JUNCTION BOX
		HEAVY-DUTY HAND HOLE
		EXISTING CONDUIT (LENGTH AND SIZE) PROP GALVANIZED STEEL OR PVC CONDUIT UPPER MATERIAL INDICATES LENGTH "T" INDICATES CONDUIT IN TRENCH "P" INDICATES CONDUIT PUSHED LOWER NUMERAL INDICATES SIZE AND TYPE
		LUMINAIRE
		ARROW - THROUGH, TURN LEFT
		ARROW - THROUGH
		ARROW - TURN LEFT
		ARROW - TURN RIGHT
		ONE DIRECTION TURN ONLY
		HANDICAPPED PARKING STALL
		TRAFFIC DETECTOR LOOP
		TRAFFIC CONTROL BOX

HATCH PATTERNS

	EARTH - FILL		BRICK
	EARTH - UNDISTURBED		STEEL
	ROCK (GEOLOGICAL)		INSULATION (LOOSE/ BATT)
	STONE OR RIP RAP		INSULATION (RIGID)
	GRAVEL		WOOD (ROUGH)
	CONCRETE		WOOD (BLOCKING)
	CONCRETE BLOCK		WOOD (FINISH)
	CMU		

SYMBOLS

EXISTING	PROPOSED	
		LIGHT (MAST MOUNTED)
		LIGHT POLE (SINGLE FIXTURE)
		YARD LIGHT
		UTILITY POLE
		UTILITY POLE WITH GUY WIRE AND ANCHOR
		SIGN (MULTIPLE POST, SINGLE POST)
		GUARD RAIL
		RAILROAD TRACKS
		BUILDING
		MAILBOX
		TELEPHONE RISER PEDESTAL
		SPOT ELEVATION (AT + )
		CONTOUR LINE
		SOIL BORING LOCATION AND NUMBER
		COORDINATE POINT ON GRID SYSTEM
		FOUND OR SET PROPERTY PIN
		RIGHT-OF-WAY MARKER
		BENCHMARK
		RIGHT-OF-WAY LINE
		PROPERTY LINE
		CENTERLINE
		SETBACK LINE
		EASEMENT LINE
		SECTION LINE
		SECTION CORNER
		ALARM WATER LEVEL
		HIGH WATER LEVEL
		MEAN WATER LEVEL
		LOW WATER LEVEL
		WATER LEVEL
		GATE VALVE
		CHECK VALVE
		PLUG VALVE
		GLOBE VALVE
		BUTTERFLY VALVE
		METER
		STRAINER
		WYE FITTING
		CONSTRUCTION LIMIT LINE
		PRIMARY EVACUATION ROUTE
		SECONDARY EVACUATION ROUTE
		OUTLINE OF DETAILED AREA
		SECTION NUMBER SHEET WHERE SHOWN
		KEY NOTE
		REVISION NUMBER

(ELECTRICAL RELATED)

	FNR FULL VOLTAGE NONREVERSING STARTER		FIXTURE TYPE B, CIR. #4, SWITCH a		CURRENT TRANSFORMER, UTILITY METER BASE
	UH-1 UNIT HEATER No. 1		SWITCH a		SELECTOR SWITCH, H-O-A, RED PILOT LIGHT
	MOTOR ACTUATOR		3 WAY SWITCH b		PUSH TO START, PUSH TO STOP, RED RUN PILOT LIGHT
	THERMOSTAT		600 A. FUSED SWITCH, 400A FUSE		ELAPSED TIME METER XXXX.X HOURS
	PHOTOCELL		FUSED SWITCH & MAGNETIC STARTER T = CONTROL POWER TRANSFORMER		TRANSFORMER T1
	FAN TYPE F2, ITEM A		FUSED SWITCH & MAGNETIC STARTER & O/L T = CONTROL POWER TRANSFORMER A = AUXILIARY CONTACT		LIGHTING PANEL #1
	RELAY #1		MOTOR; MOTOR EQUIPMENT SCHEDULE, ITEM #6		60 A DISCONNECT
	PILOT LIGHT, RED		TELEPHONE JUNCTION BOX		EQUIPMENT GROUND TO EARTH PER N.E.C.
	MOTOR STARTER				TO PANEL 4 CIRCUIT #2
	TERMINAL TO REMOTE DEVICE				
	PRESSURE ELECTRIC SWITCH #1				
	UNDERGROUND ELECTRIC		DUPLEX RECEPTACLE WIRE TO PANEL # 3, BREAKER # 5		AUTOMATIC TRANSFER SWITCH
	SPECIAL RECEPTACLE		CIRCUIT BREAKER		EXISTING CONSTRUCTION
	NEW CONSTRUCTION				

**FEHR-GRAHAM & ASSOCIATES, LLC**  
ENGINEERING AND SCIENCE CONSULTANTS  
FREEPORT, IL ROCKFORD, IL ROCHELLE, IL SPRINGFIELD, IL MONROE, WI  
ILLINOIS DESIGN FIRM NO. 184-003525  
© 2011 FEHR-GRAHAM & ASSOCIATES

OWNER/DEVELOPER:  
FREEPORT PARK DISTRICT  
1122 SOUTH BURCHARD STREET  
FREEPORT, ILLINOIS

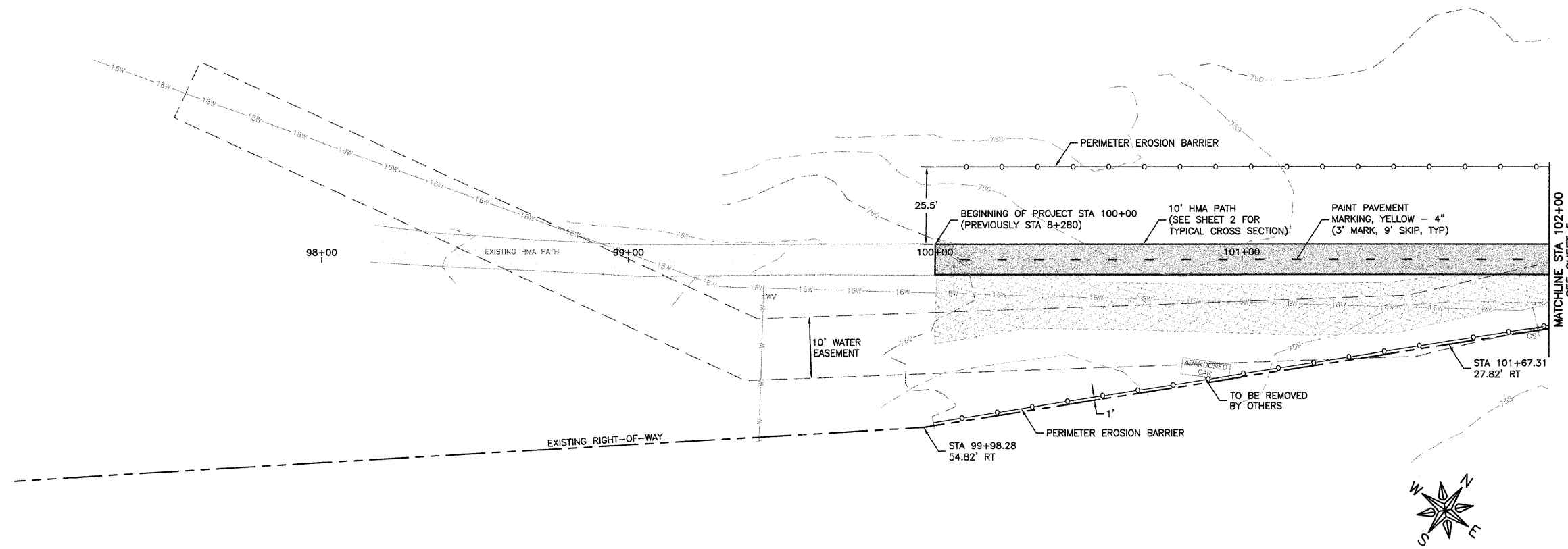
PROJECT AND LOCATION:  
PECATONICA PRAIRIE PATH  
FREEPORT, ILLINOIS

DRAWN BY: B.C.  
APPROVED BY: P.E.  
DATE: 04/15/11  
SCALE:

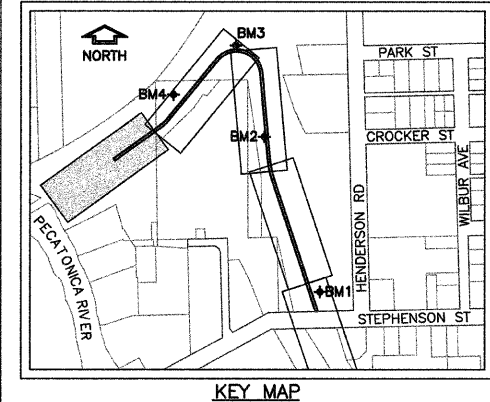
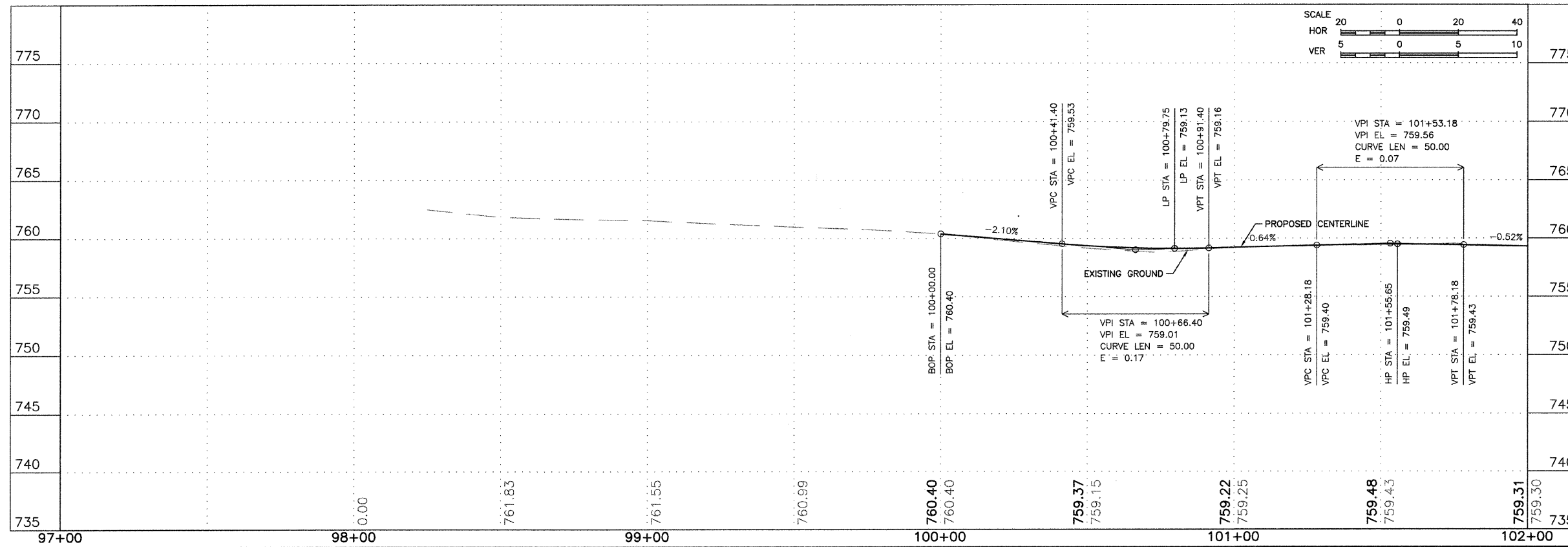
REVISIONS		
REV. NO.	DESCRIPTION	DATE

DRAWING:  
STANDARD LEGEND

JOB NUMBER:  
11-274  
SHEET NUMBER:  
3 of 13



MATCHLINE STA 102+00  
SEE SHEET 5



**FEHR-GRAHAM & ASSOCIATES, LLC**  
ENGINEERING AND SCIENCE CONSULTANTS  
FREEPORT, IL ROCKFORD, IL ROCHELLE, IL SPRINGFIELD, IL MONROE, WI  
ILLINOIS DESIGN FIRM NO. 184-003525  
© 2011 FEHR-GRAHAM & ASSOCIATES

OWNER/DEVELOPER:  
FREEPORT PARK DISTRICT  
1122 SOUTH BURCHARD STREET  
FREEPORT, ILLINOIS

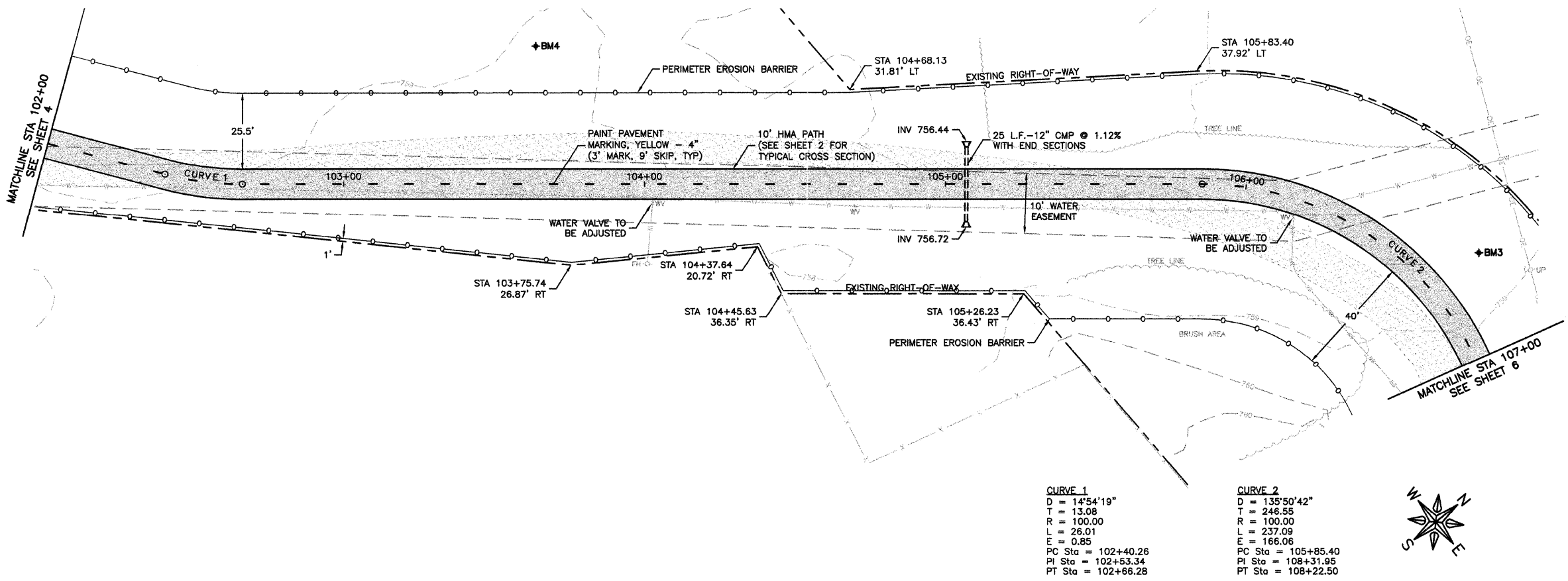
PROJECT AND LOCATION:  
PECATONICA PRAIRIE PATH  
FREEPORT, ILLINOIS

DRAWN BY: B.C.  
APPROVED BY: P.E.  
DATE: 04/15/11  
SCALE: AS NOTED

REVISIONS		
REV. NO.	DESCRIPTION	DATE

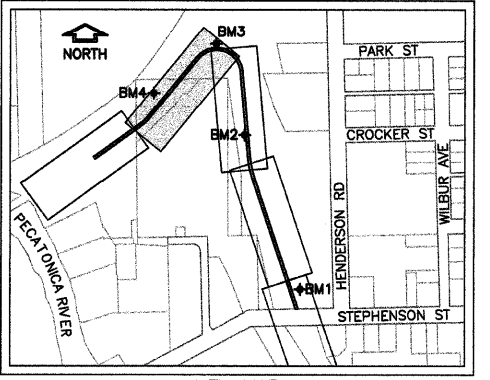
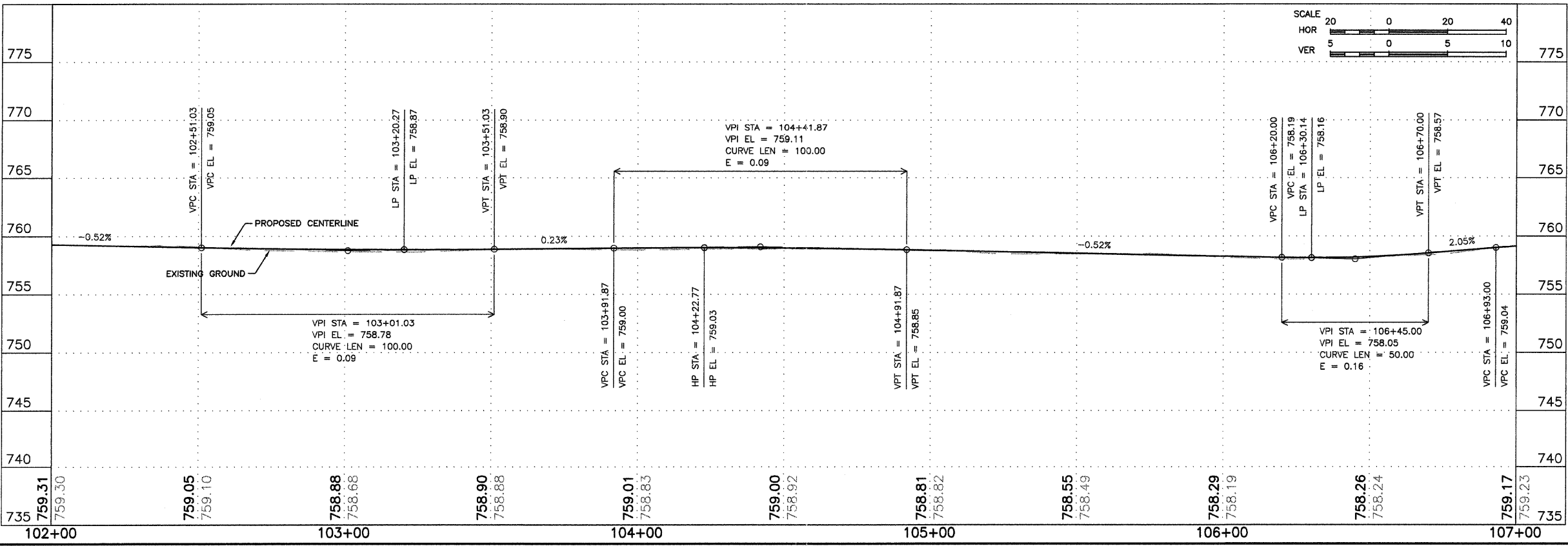
DRAWING:  
PECATONICA PRAIRIE PATH PLAN & PROFILE  
STA 97+00 - STA 102+00  
© \EQLP\11\11-274\RCp01001.dwg, Layout1

JOB NUMBER:  
11-274  
SHEET NUMBER:  
4 of 13



**CURVE 1**  
D = 14°54'19"  
T = 13.08  
R = 100.00  
L = 26.01  
E = 0.85  
PC Sta = 102+40.26  
PI Sta = 102+53.34  
PT Sta = 102+66.28

**CURVE 2**  
D = 135°50'42"  
T = 246.55  
R = 100.00  
L = 237.09  
E = 166.06  
PC Sta = 105+85.40  
PI Sta = 108+31.95  
PT Sta = 108+22.50



BM #3- ¾" REBAR, ELEVATION 758.44  
BM #4- ¾" REBAR, ELEVATION 758.79

**FEHR-GRAHAM & ASSOCIATES, LLC**  
ENGINEERING AND SCIENCE CONSULTANTS  
FREEPORT, IL ROCKFORD, IL ROCHELLE, IL SPRINGFIELD, IL MONROE, WI  
ILLINOIS DESIGN FIRM NO. 184-003525  
© 2011 FEHR-GRAHAM & ASSOCIATES

OWNER/DEVELOPER:  
FREEPORT PARK DISTRICT  
1122 SOUTH BURCHARD STREET  
FREEPORT, ILLINOIS

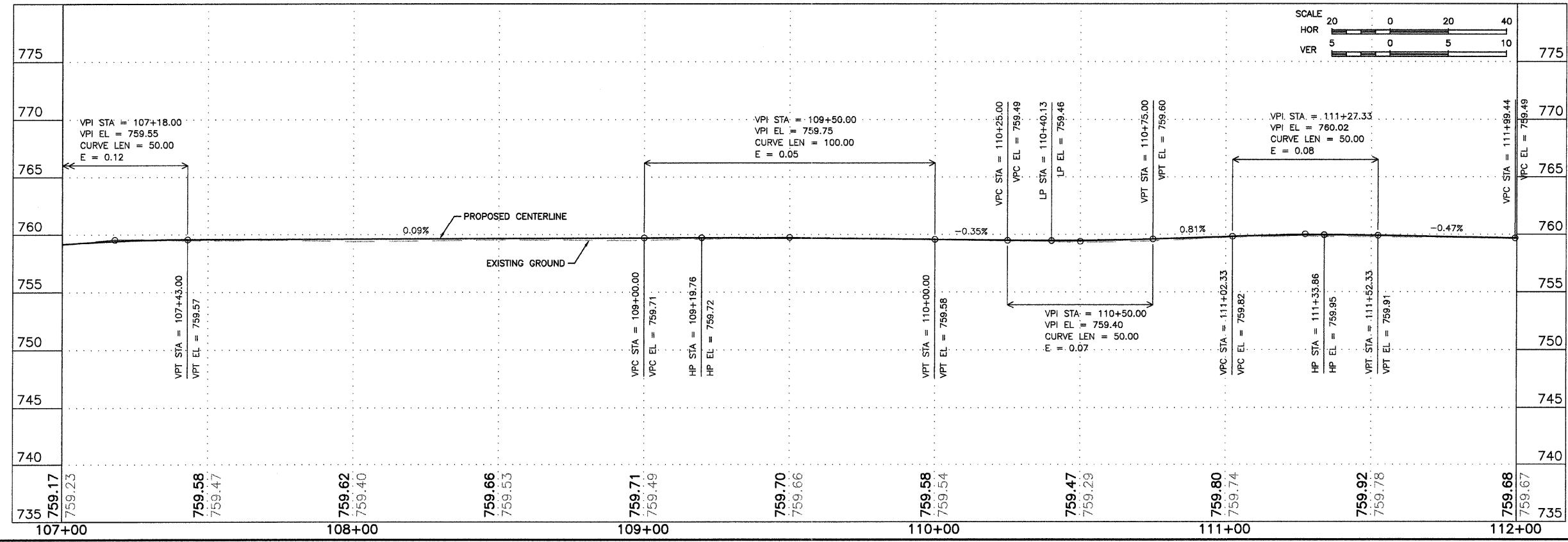
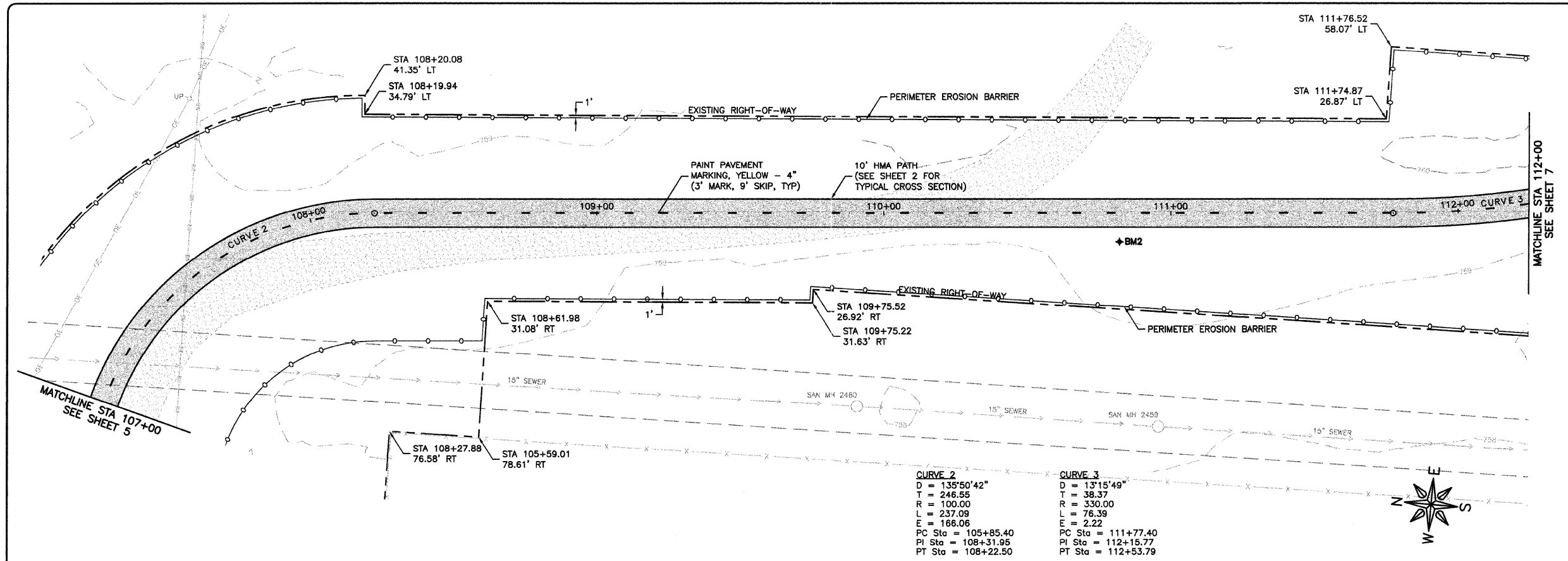
PROJECT AND LOCATION:  
PECATONICA PRAIRIE PATH  
FREEPORT, ILLINOIS

DRAWN BY: B.C.  
APPROVED BY: P.E.  
DATE: 04/15/11  
SCALE: AS NOTED

REVISIONS		
REV. NO.	DESCRIPTION	DATE

DRAWING:  
PECATONICA PRAIRIE PATH PLAN & PROFILE  
STA 102+00 - STA 107+00

JOB NUMBER:  
11-274  
SHEET NUMBER:  
5 of 13



**FEHR-GRAHAM & ASSOCIATES, LLC**  
ENGINEERING AND SCIENCE CONSULTANTS  
FREEPORT, IL ROCKFORD, IL ROCHELLE, IL SPRINGFIELD, IL MONROE, WI  
ILLINOIS DESIGN FIRM NO. 184-003525  
© 2011 FEHR-GRAHAM & ASSOCIATES

OWNER/DEVELOPER:  
FREEPORT PARK DISTRICT  
1122 SOUTH BURCHARD STREET  
FREEPORT, ILLINOIS

PROJECT AND LOCATION:  
PECATONICA PRAIRIE PATH  
FREEPORT, ILLINOIS

DRAWN BY: B.C.  
APPROVED BY: P.E.  
DATE: 04/15/11  
SCALE: AS NOTED

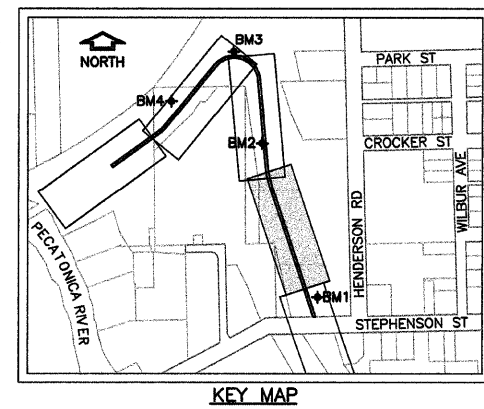
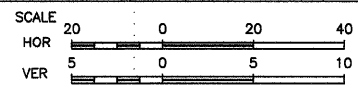
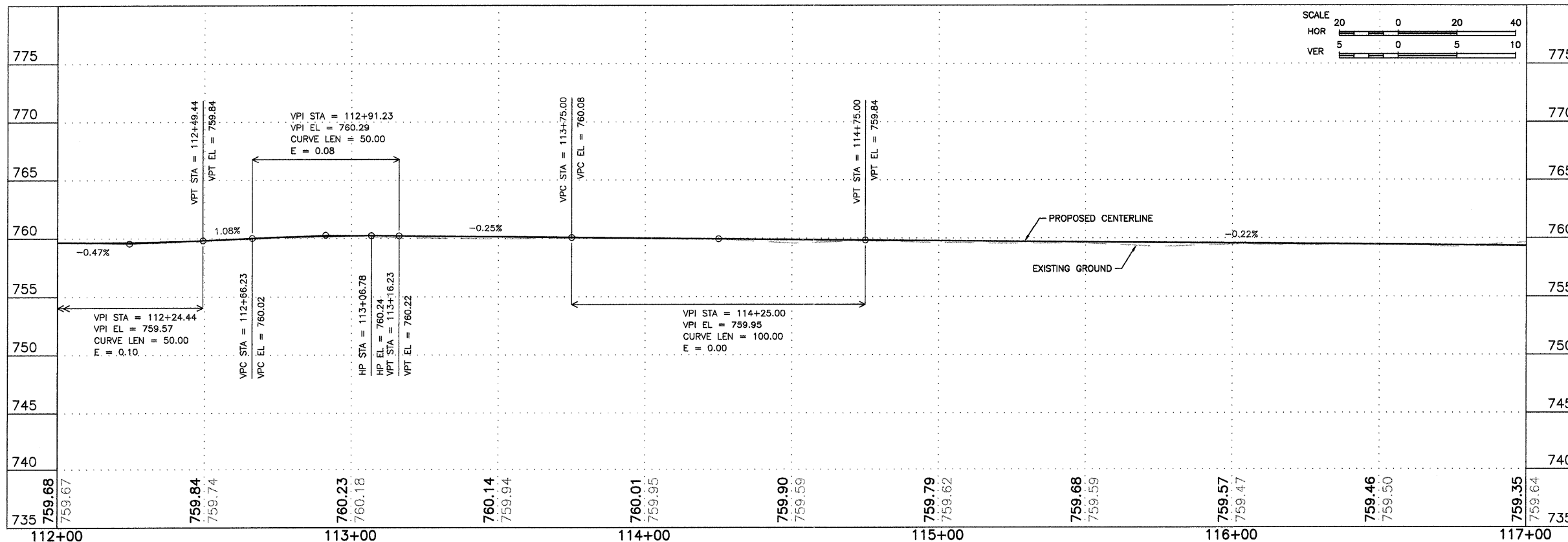
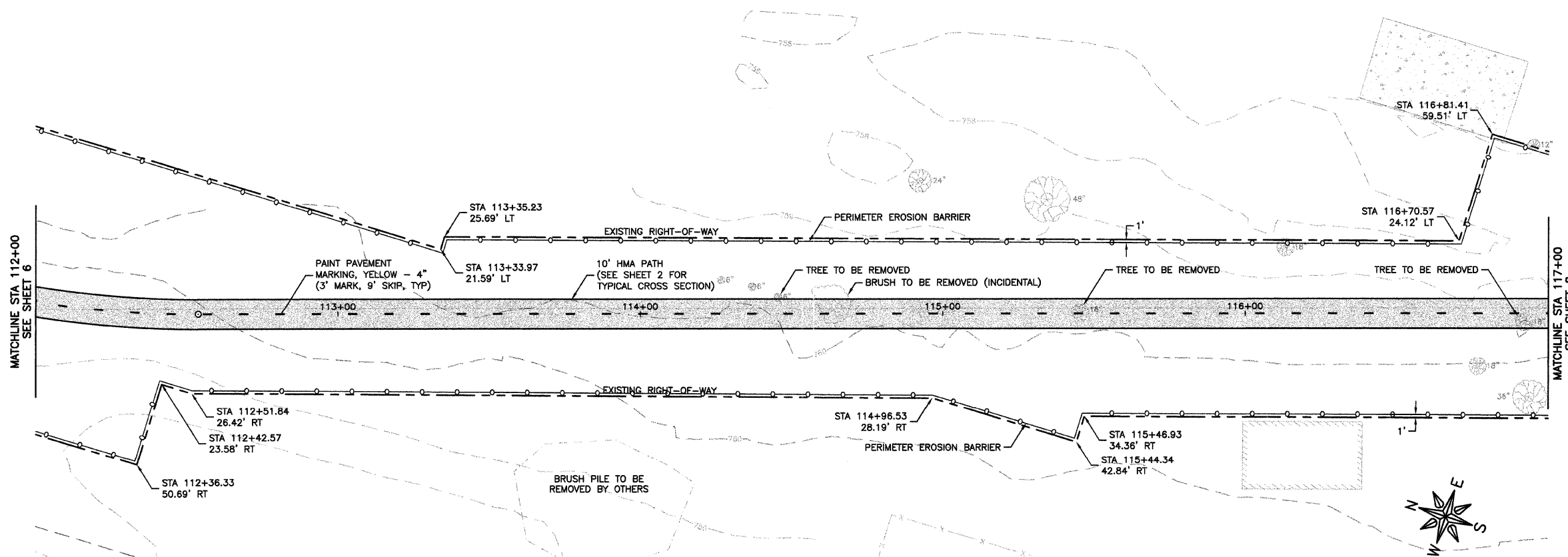
REVISIONS		
REV. NO.	DESCRIPTION	DATE

DRAWING:  
PECATONICA PRAIRIE PATH PLAN & PROFILE  
STA 107+00 - STA 112+00

JOB NUMBER:  
11-274

SHEET NUMBER:  
6 of 13





**FEHR-GRAHAM & ASSOCIATES, LLC**  
ENGINEERING AND SCIENCE CONSULTANTS  
FREEPORT, IL ROCKFORD, IL ROCHELLE, IL SPRINGFIELD, IL MONROE, WI  
ILLINOIS DESIGN FIRM NO. 184-003525

OWNER/DEVELOPER:  
FREEPORT PARK DISTRICT  
1122 SOUTH BURCHARD STREET  
FREEPORT, ILLINOIS

PROJECT AND LOCATION:  
PECATONICA PRAIRIE PATH  
FREEPORT, ILLINOIS

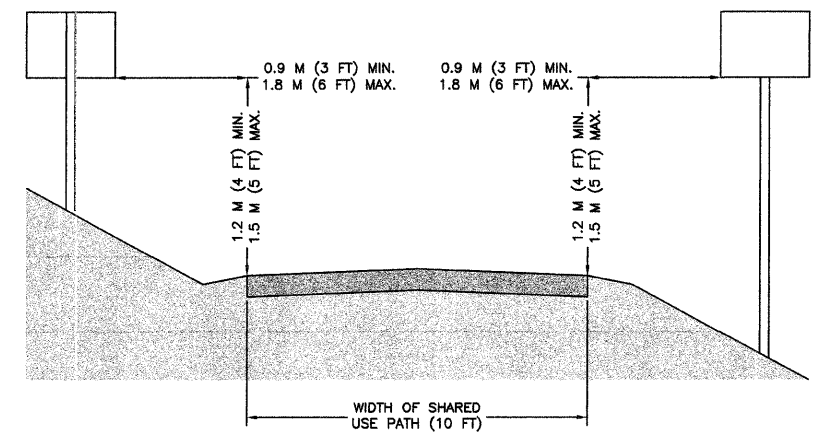
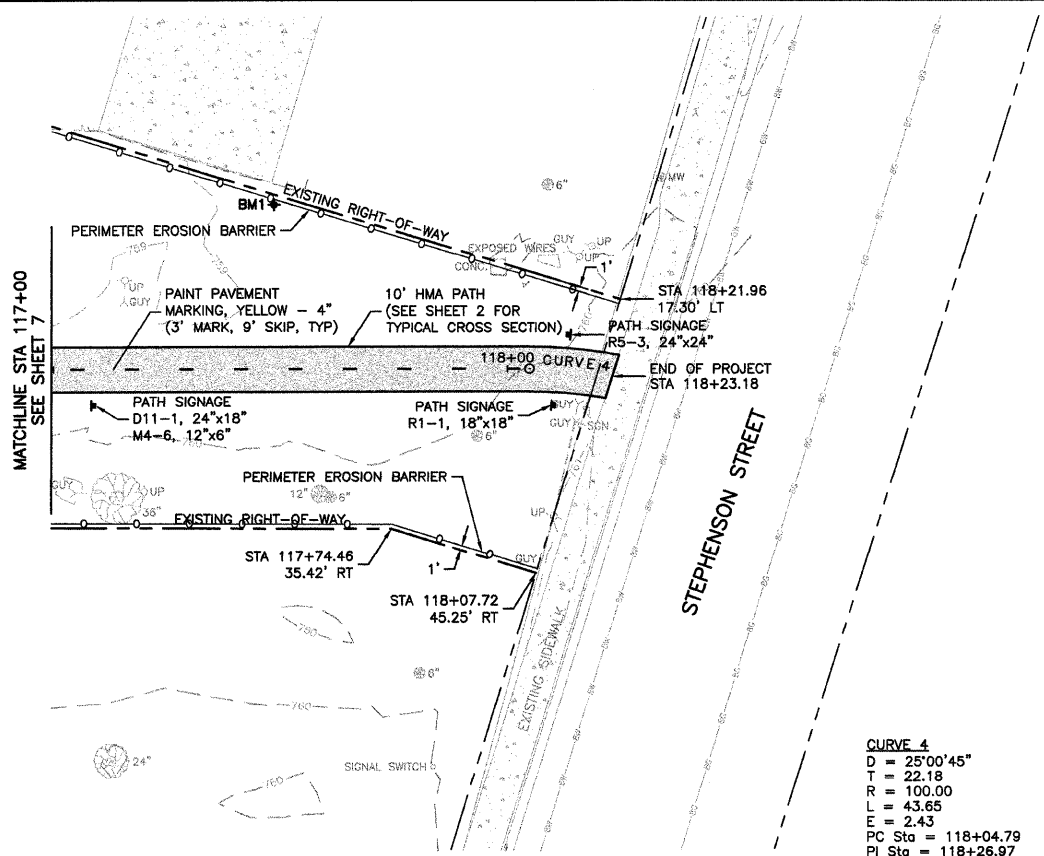
DRAWN BY: B.C.  
APPROVED BY: P.E.  
DATE: 04/15/11  
SCALE: AS NOTED

REVISIONS		
REV. NO.	DESCRIPTION	DATE

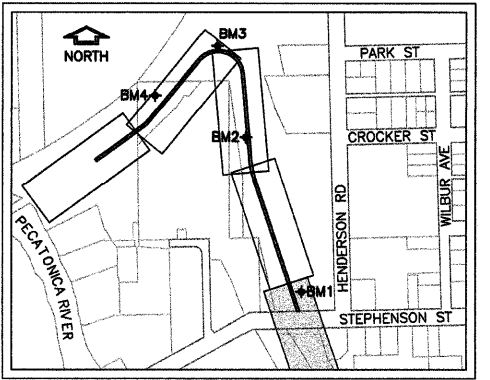
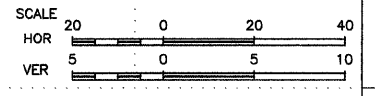
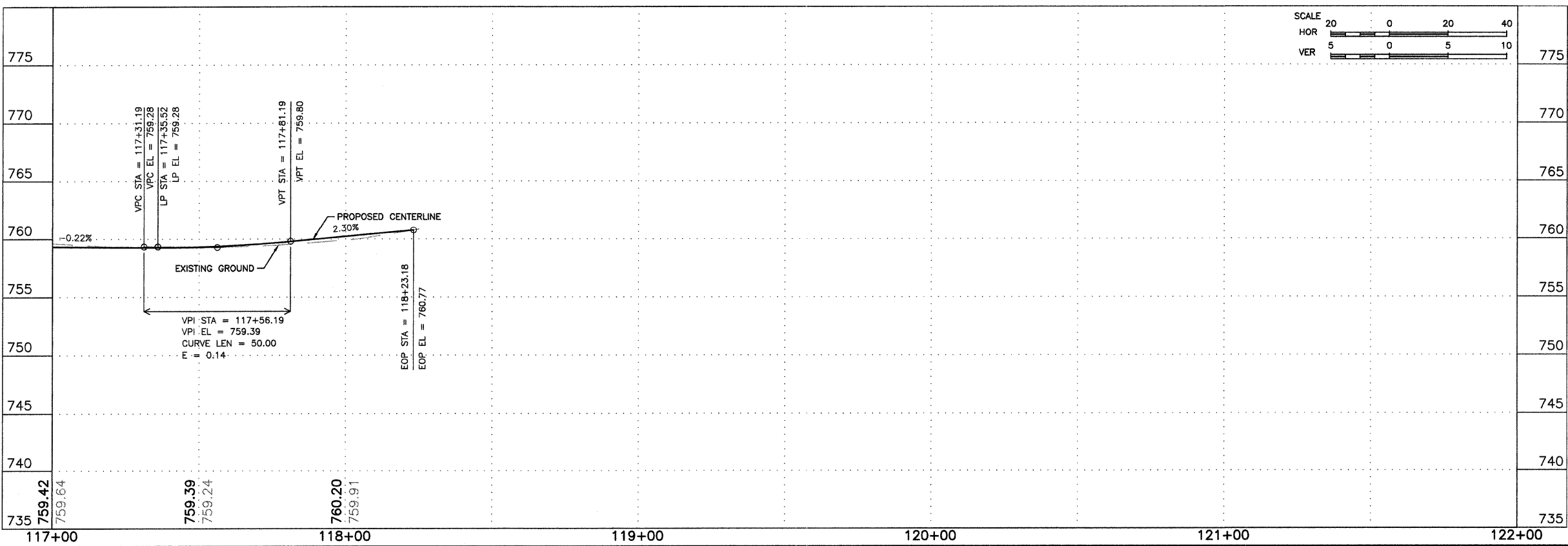
DRAWING:  
PECATONICA PRAIRIE PATH PLAN & PROFILE  
STA 112+00 - STA 117+00

JOB NUMBER:  
11-274

SHEET NUMBER:  
7 of 13



SIGN PLACEMENT DETAIL  
N.T.S.



KEY MAP

BM #1 - 3/4" REBAR, ELEVATION 759.24

**FEHR-GRAHAM & ASSOCIATES, LLC**  
ENGINEERING AND SCIENCE CONSULTANTS  
FREEPORT, IL ROCKFORD, IL ROCHELLE, IL SPRINGFIELD, IL MONROE, WI  
ILLINOIS DESIGN FIRM NO. 184-003525  
© 2011 FEHR-GRAHAM & ASSOCIATES

OWNER/DEVELOPER:  
FREEPORT PARK DISTRICT  
1122 SOUTH BURCHARD STREET  
FREEPORT, ILLINOIS

PROJECT AND LOCATION:  
PECATONICA PRAIRIE PATH  
FREEPORT, ILLINOIS

DRAWN BY: B.C.  
APPROVED BY: P.E.  
DATE: 04/15/11  
SCALE: AS NOTED

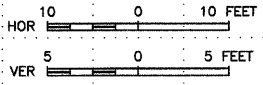
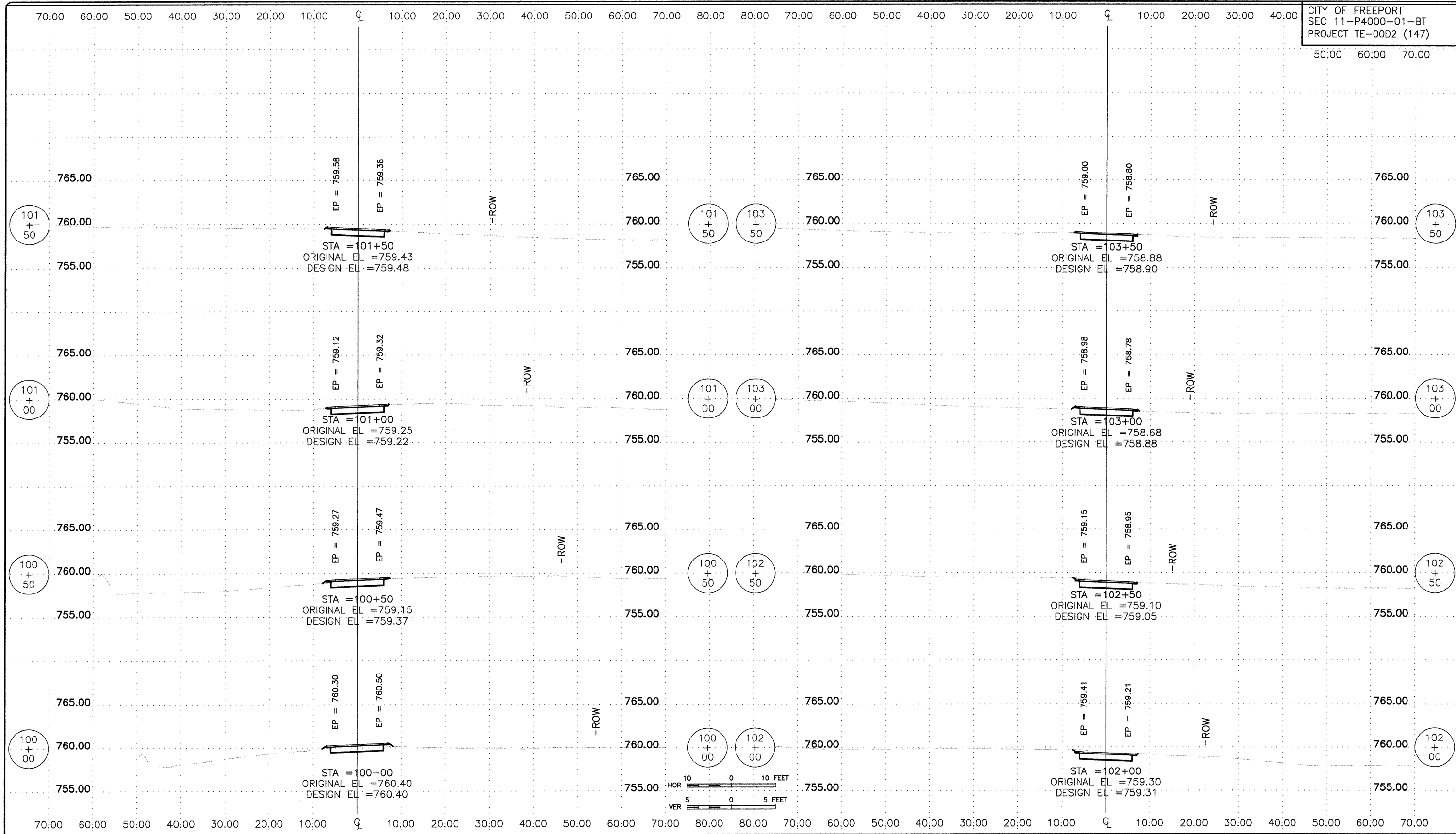
REVISIONS		
REV. NO.	DESCRIPTION	DATE

DRAWING:  
PECATONICA PRAIRIE PATH PLAN & PROFILE  
STA 117+00 - STA 118+18.93.

JOB NUMBER:  
11-274

SHEET NUMBER:  
8 of 13





**FEHR-GRAHAM & ASSOCIATES, LLC**  
ENGINEERING AND SCIENCE CONSULTANTS  
FREEPORT, IL ROCKFORD, IL ROCHELLE, IL SPRINGFIELD, IL MONROE, WI  
ILLINOIS DESIGN FIRM NO. 184-003525  
© 2011 FEHR-GRAHAM & ASSOCIATES

OWNER/DEVELOPER:  
FREEPORT PARK DISTRICT  
1122 SOUTH BURCHARD STREET  
FREEPORT, ILLINOIS

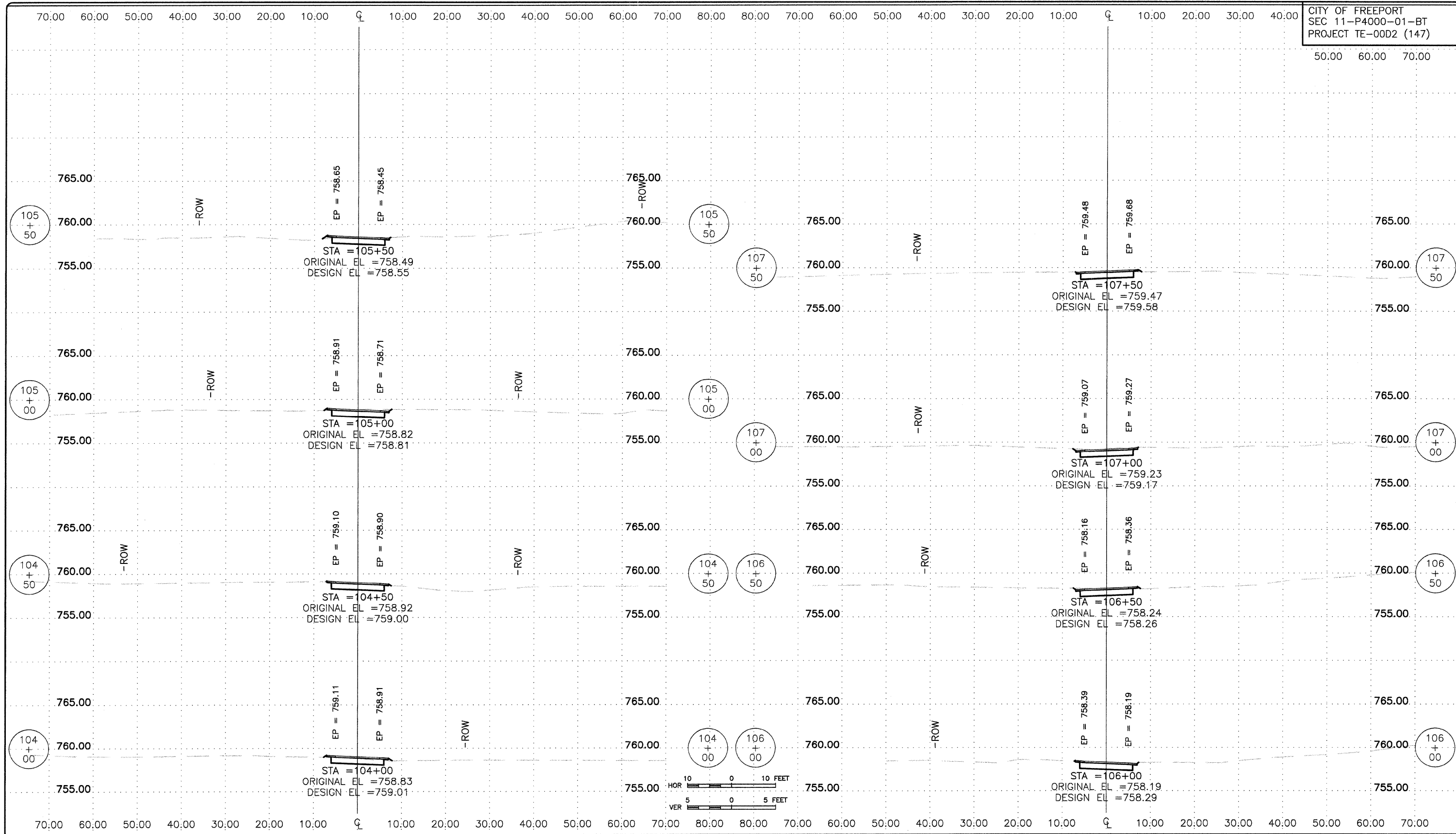
PROJECT AND LOCATION:  
PECATONICA PRAIRIE PATH  
FREEPORT, ILLINOIS

DRAWN BY: B.C.  
APPROVED BY: P.E.  
DATE: 04/15/11  
SCALE: AS NOTED

REVISIONS		
REV. NO.	DESCRIPTION	DATE

DRAWING:  
PECATONICA PRAIRIE PATH CROSS SECTIONS  
STA 100+00 - STA 103+50  
G:\EGLPT\11\11-274\rc001001.dwg, Layout1

JOB NUMBER:  
11-274  
SHEET NUMBER:  
9 of 13



**FEHR-GRAHAM & ASSOCIATES, LLC**  
 ENGINEERING AND SCIENCE CONSULTANTS  
 FREEPORT, IL ROCKFORD, IL ROCHELLE, IL SPRINGFIELD, IL MONROE, WI  
 ILLINOIS DESIGN FIRM NO. 184-003925  
 © 2011 FEHR-GRAHAM & ASSOCIATES

OWNER/DEVELOPER:  
 FREEPORT PARK DISTRICT  
 1122 SOUTH BURCHARD STREET  
 FREEPORT, ILLINOIS

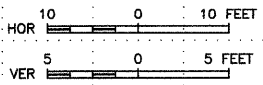
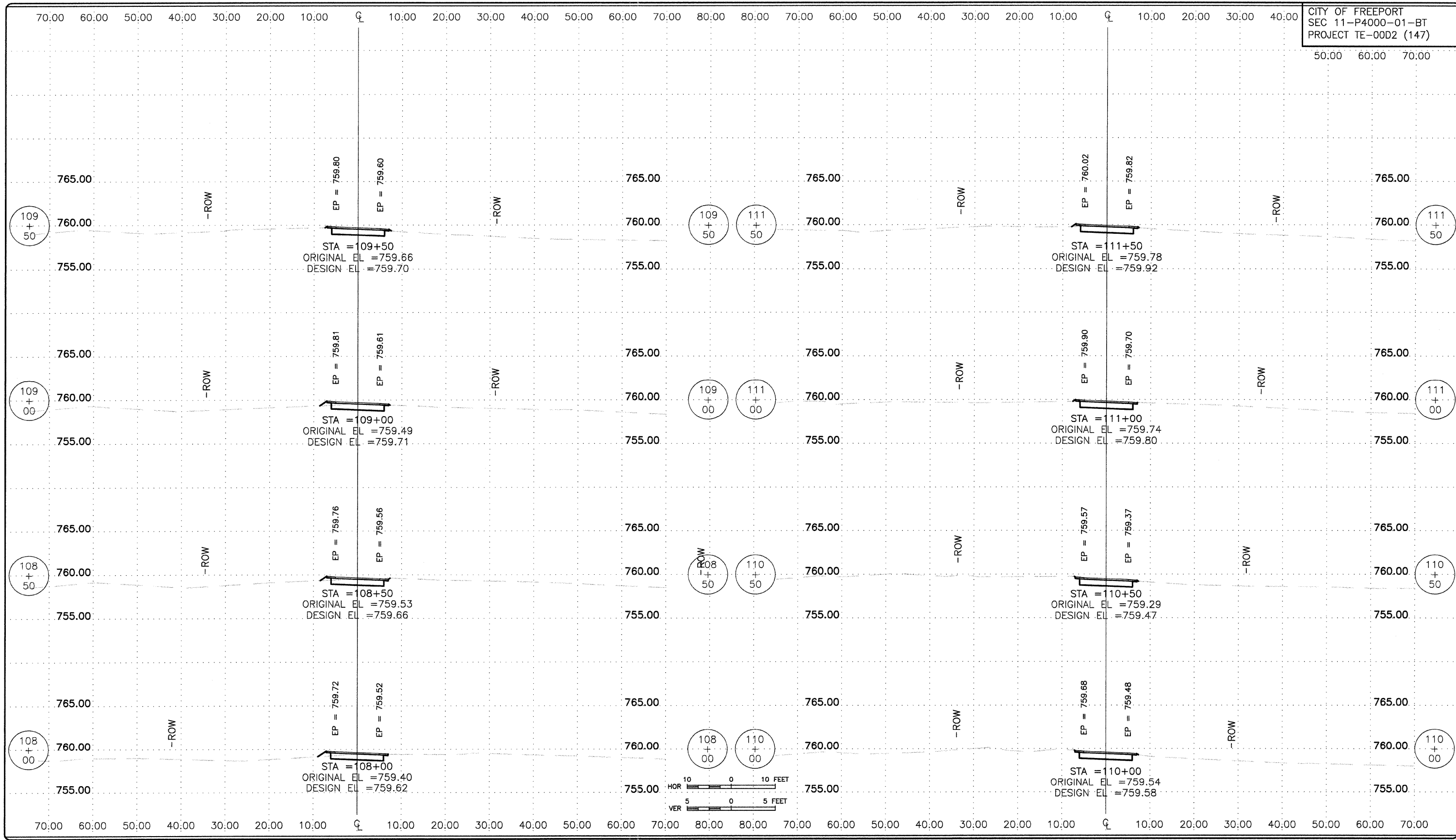
PROJECT AND LOCATION:  
 PECATONICA PRAIRIE PATH  
 FREEPORT, ILLINOIS

DRAWN BY: B.C.  
 APPROVED BY: P.E.  
 DATE: 04/15/11  
 SCALE: AS NOTED

REVISIONS		
REV. NO.	DESCRIPTION	DATE

DRAWING:  
 PECATONICA PRAIRIE PATH CROSS SECTIONS  
 STA 104+00 - STA 107+50  
 G:\EGLPT\11-274\c002001.dwg, Layout1

JOB NUMBER:  
 11-274  
 SHEET NUMBER:  
 10 of 13



**FEHR-GRAHAM & ASSOCIATES, LLC**  
ENGINEERING AND SCIENCE CONSULTANTS  
FREEPORT, IL ROCKFORD, IL ROCHELLE, IL SPRINGFIELD, IL MONROE, WI  
ILLINOIS DESIGN FIRM NO. 184-003525  
© 2011 FEHR-GRAHAM & ASSOCIATES

OWNER/DEVELOPER:  
FREEPORT PARK DISTRICT  
1122 SOUTH BURCHARD STREET  
FREEPORT, ILLINOIS

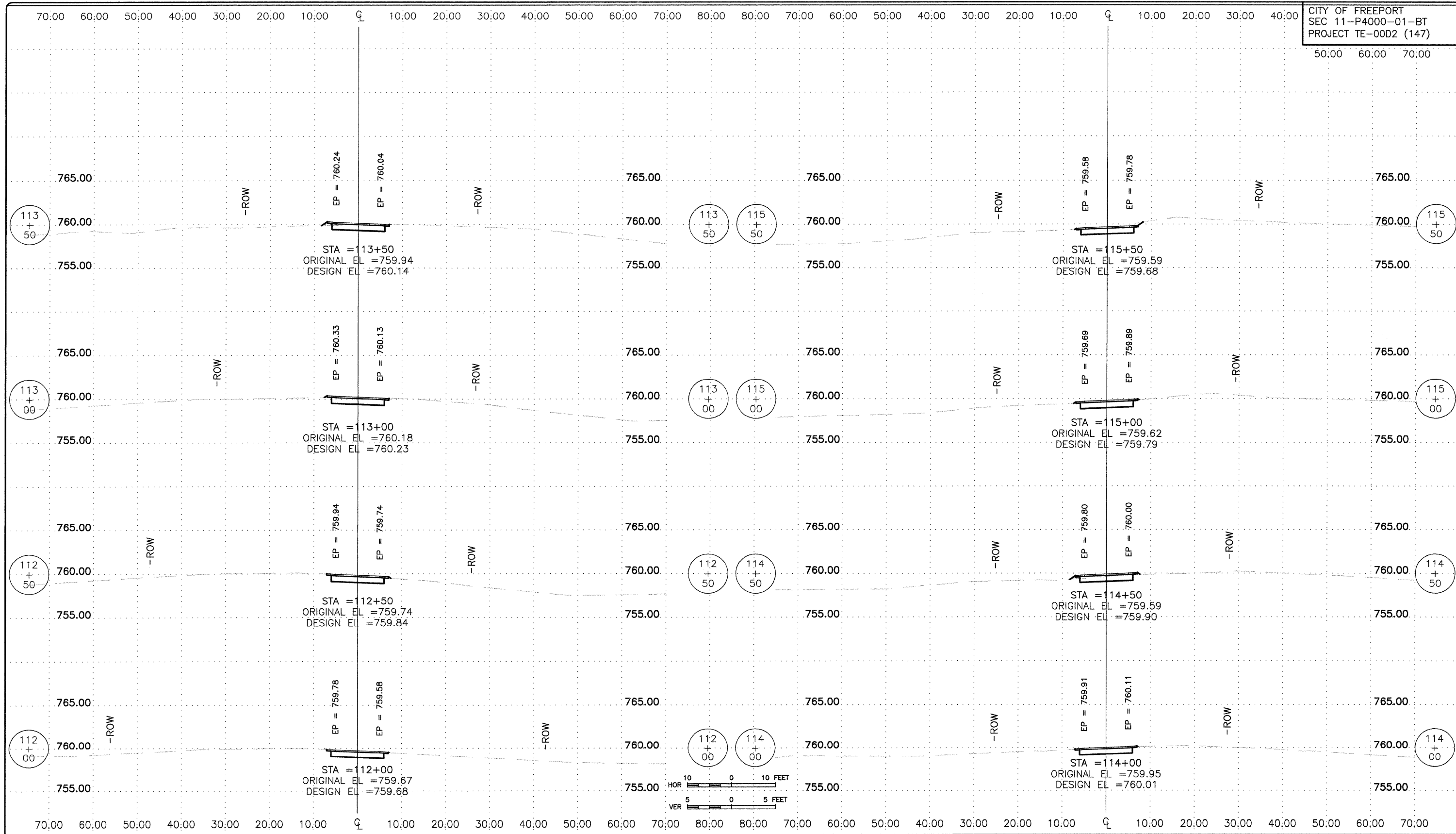
PROJECT AND LOCATION:  
PECATONICA PRAIRIE PATH  
FREEPORT, ILLINOIS

DRAWN BY: B.C.  
APPROVED BY: P.E.  
DATE: 04/15/11  
SCALE: AS NOTED

REVISIONS		
REV. NO.	DESCRIPTION	DATE

DRAWING:  
PECATONICA PRAIRIE PATH CROSS SECTIONS  
STA 108+00 - STA 111+50  
G:\EGLPT\11-274\c003001.dwg Layout1

JOB NUMBER:  
11-274  
SHEET NUMBER:  
11 of 13



**FEHR-GRAHAM & ASSOCIATES, LLC**  
ENGINEERING AND SCIENCE CONSULTANTS  
FREEPORT, IL ROCKFORD, IL ROCHELLE, IL SPRINGFIELD, IL MONROE, WI  
ILLINOIS DESIGN FIRM NO. 184-003525  
© 2011 FEHR-GRAHAM & ASSOCIATES

OWNER/DEVELOPER:  
FREEPORT PARK DISTRICT  
1122 SOUTH BURCHARD STREET  
FREEPORT, ILLINOIS

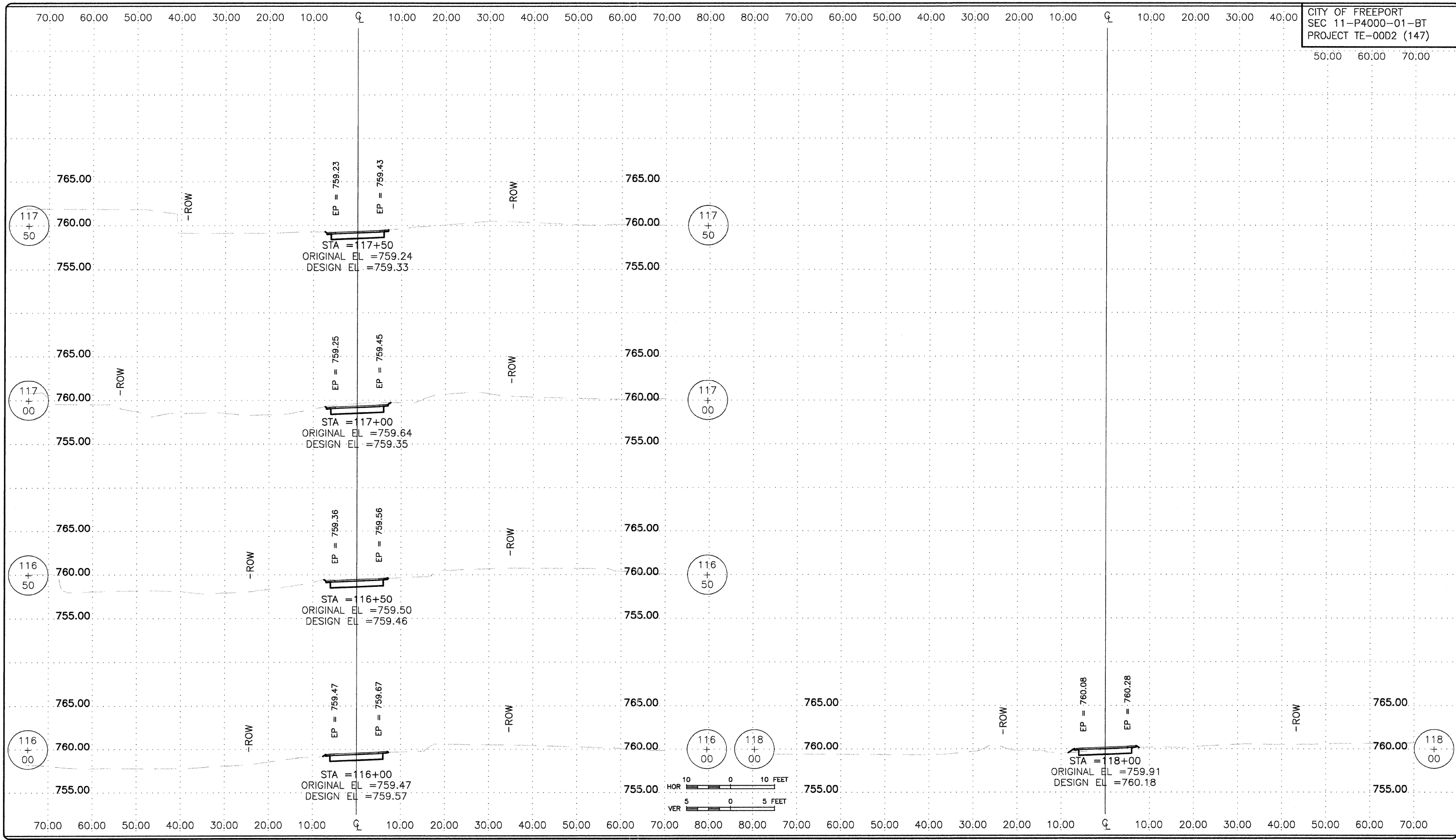
PROJECT AND LOCATION:  
PECATONICA PRAIRIE PATH  
FREEPORT, ILLINOIS

DRAWN BY: B.C.  
APPROVED BY: P.E.  
DATE: 04/15/11  
SCALE: AS NOTED

REVISIONS		
REV. NO.	DESCRIPTION	DATE

DRAWING:  
PECATONICA PRAIRIE PATH CROSS SECTIONS  
STA 112+00 - STA 115+50  
G:\EQLPT\11\11-274\c004001.dwg Layout1

JOB NUMBER:  
11-274  
SHEET NUMBER:  
12 of 13



**FEHR-GRAHAM & ASSOCIATES, LLC**  
ENGINEERING AND SCIENCE CONSULTANTS  
FREEPORT, IL ROCKFORD, IL ROCHELLE, IL SPRINGFIELD, IL MONROE, WI  
ILLINOIS DESIGN FIRM NO. 184-003525  
© 2011 FEHR-GRAHAM & ASSOCIATES

OWNER/DEVELOPER:  
FREEPORT PARK DISTRICT  
1122 SOUTH BURCHARD STREET  
FREEPORT, ILLINOIS

PROJECT AND LOCATION:  
PECATONICA PRAIRIE PATH  
FREEPORT, ILLINOIS

DRAWN BY: B.C.  
APPROVED BY: P.E.  
DATE: 04/15/11  
SCALE: AS NOTED

REVISIONS		
REV. NO.	DESCRIPTION	DATE

DRAWING:  
PECATONICA PRAIRIE PATH CROSS SECTIONS  
STA 116+00 - STA 118+00  
G:\EPLP\11-274\11-274\005001.dwg, Layout1

JOB NUMBER:  
11-274  
SHEET NUMBER:  
13 of 13