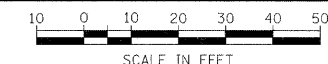
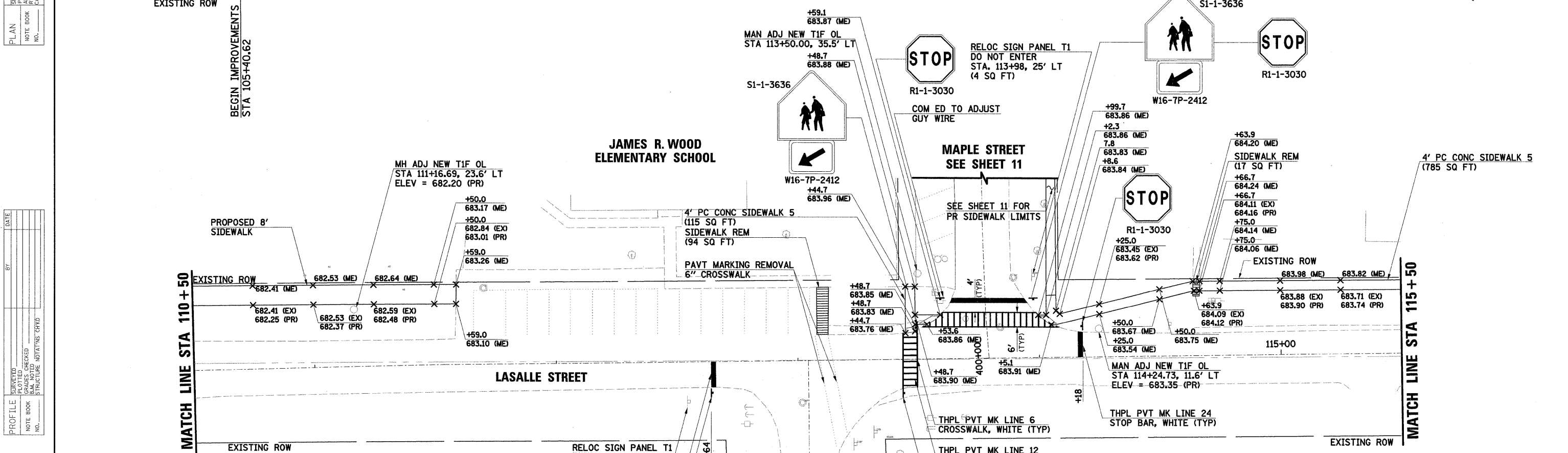
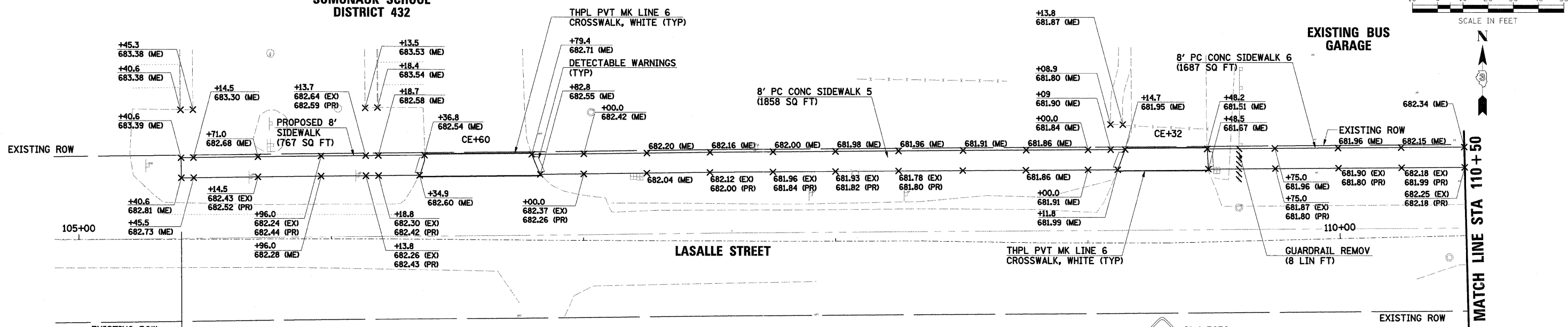


**SOMONAUK SCHOOL DISTRICT 432**



DATE	
BY	
SURVEYED	
ALIGNED	
CHECKED	
RT. OF WAY CHECKED	
NO. CAD FILE NAME	
PLAN	
NOTE BOOK	
NO.	

DATE	
BY	
SURVEYED	
PLOTTED	
CHECKED	
NO. NOTED	
STRUCTURE NOTATIONS CHKD	
PROFILE	
NOTE BOOK	
NO.	



NOTE:  
1. ALL SPOT GRADES PROVIDED ARE IN 25 FOOT INCREMENTS UNLESS OTHERWISE NOTED.



USER NAME = JRoitbu	DESIGNED -	REVISED -
DESIGNED -	DRAWN -	REVISED -
PLLOT SCALE = 1/8"=1'-0"	CHECKED -	REVISED -
PLLOT DATE = 5/25/2011	DATE -	REVISED -

**VILLAGE OF SOMONAUK**

**PLAN SHEET**  
**LASALLE STREET**  
**STA 105 + 40.62 TO STA 115 + 50.00**

C.H. RTE.	SECTION	COUNTY	TOTAL SHEETS	SHEET NO.
	10-00021-00-SW	LASALLE	18	6
CONTRACT # 87455		FED. ROAD DIST. NO. ILLINOIS FED. AID PROJECT		

SCALE: SHEET NO. OF SHEETS STA. TO STA.