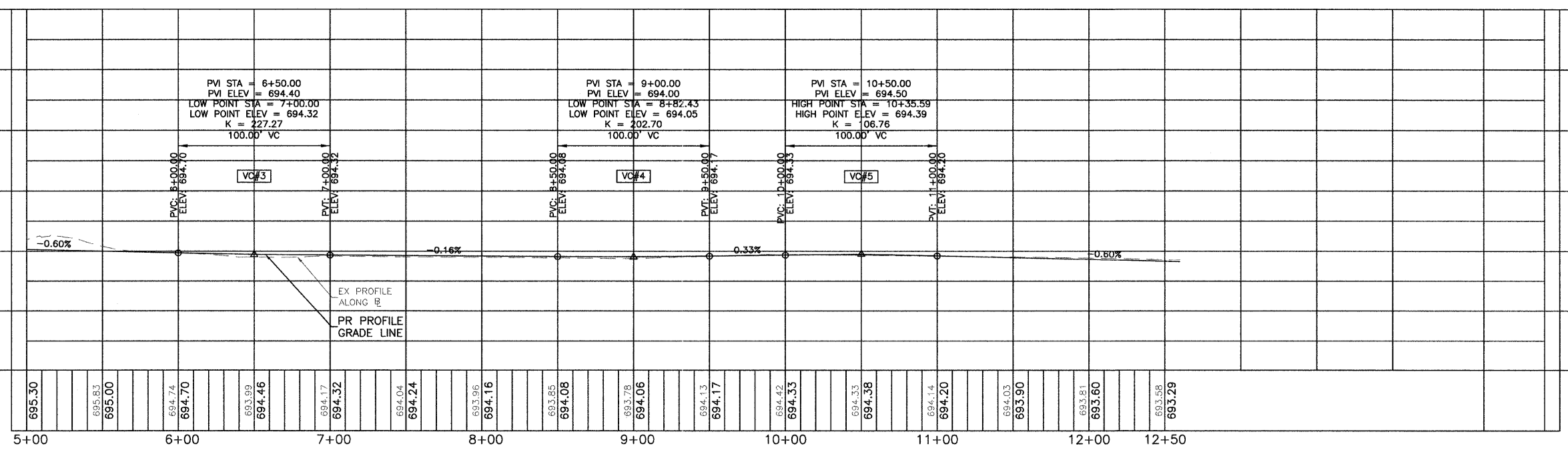
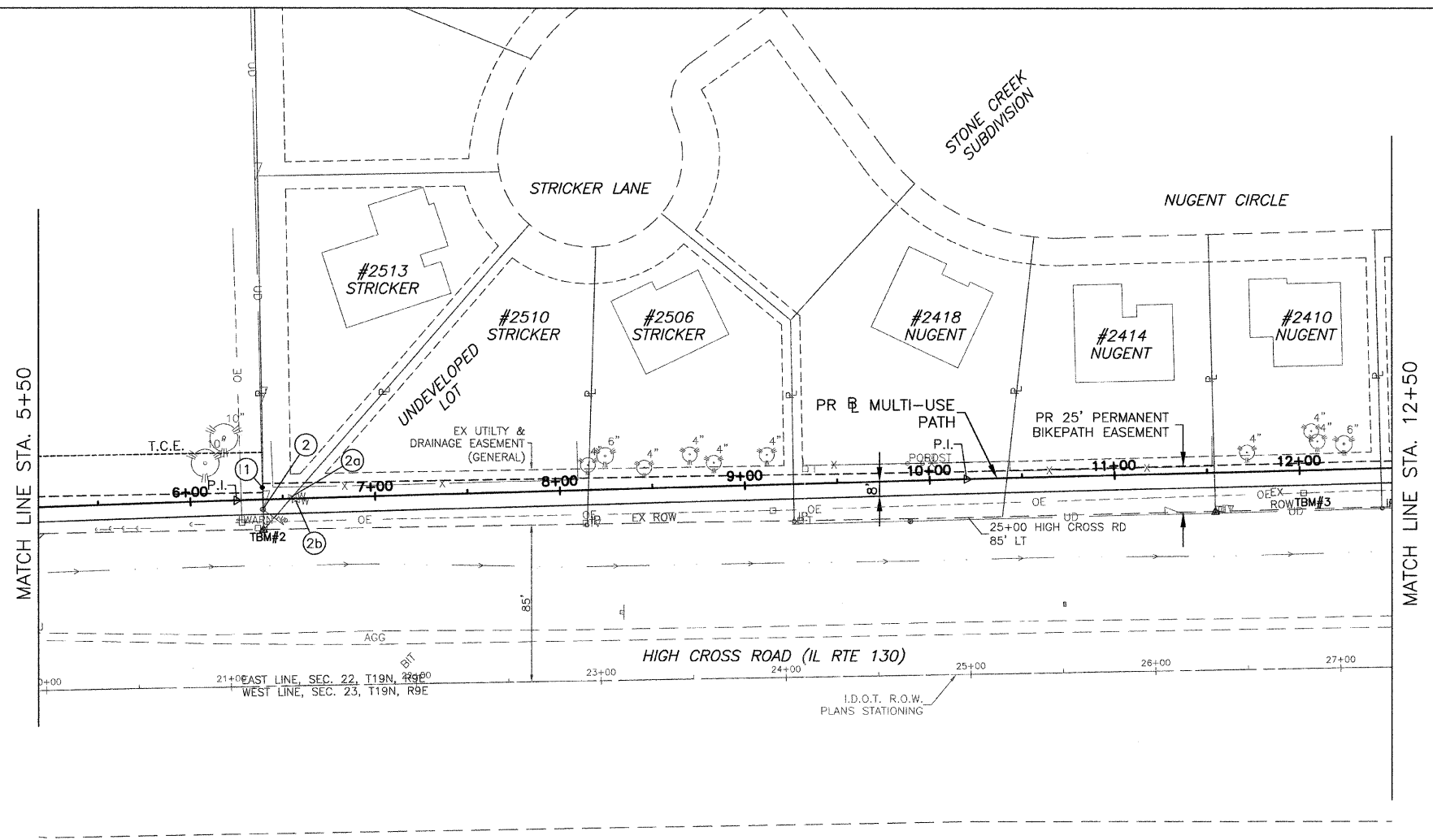


- LEGEND**
- HMA MULTI-USE PATH
 - PCC MULTI-USE PATH OR SIDEWALK
 - DETECTABLE WARNINGS
 - EX EXISTING
 - PR PROPOSED
 - T.C.E. TEMPORARY CONSTRUCTION EASEMENT

TBM #2: STA. 6+38.99, 16.49' RT. NORTH PROPERTY LINE PIN WITH A YELLOW PLASTIC CAP BETWEEN 2513 & 2510 STRICKER LANE ON THE WEST SIDE OF HIGH CROSS ROAD (IL RTE 130) ELEV.= 693.39

TBM #3: STA. 12+01.88, 12.25' RT. P.K. NAIL ON THE EAST FACE OF THIRD POWER POLE NORTH OF WINDSOR ROAD ON THE WEST SIDE OF HIGH CROSS ROAD (IL RTE 130) ELEV.= 695.46



CITY OF URBANA
PUBLIC WORKS
ENGINEERING DIVISION

DRAWN BY: CES
CHECKED BY: GLJ
DESIGNED BY: CES
CITY SECTION
05-00416-00-BT

HIGH CROSS ROAD MULTI-USE PATH
PLAN AND PROFILE
STA. 5+50 TO STA. 12+50

SHEET NO.
13
OF
40