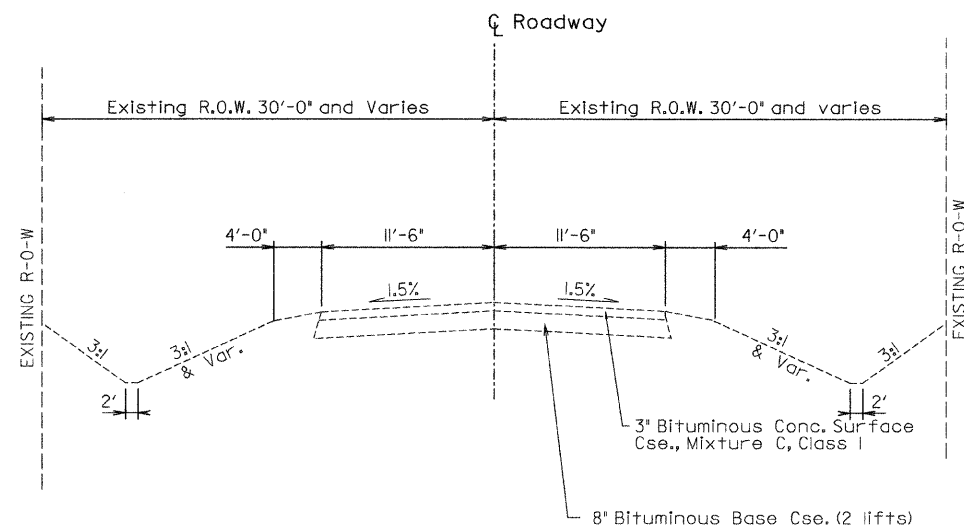


ROUTE NO.	SECTION	COUNTY	TOTAL SHEETS	SHEET NO.
C.H. II	10-00962-00-BR	CHAMPAIGN	40	5
STA.		TO STA.		
F.H.W.A. REG.		ILLINOIS PROJECT		

EXISTING TYPICAL PAVEMENT SECTION

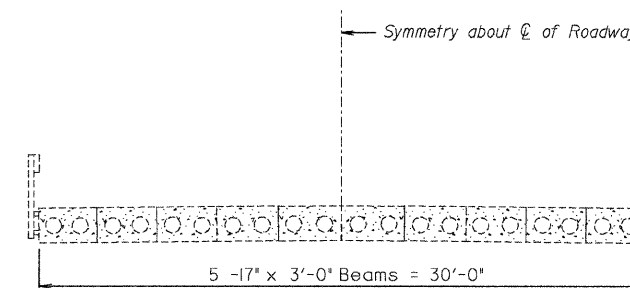


EXISTING TYPICAL PAVEMENT

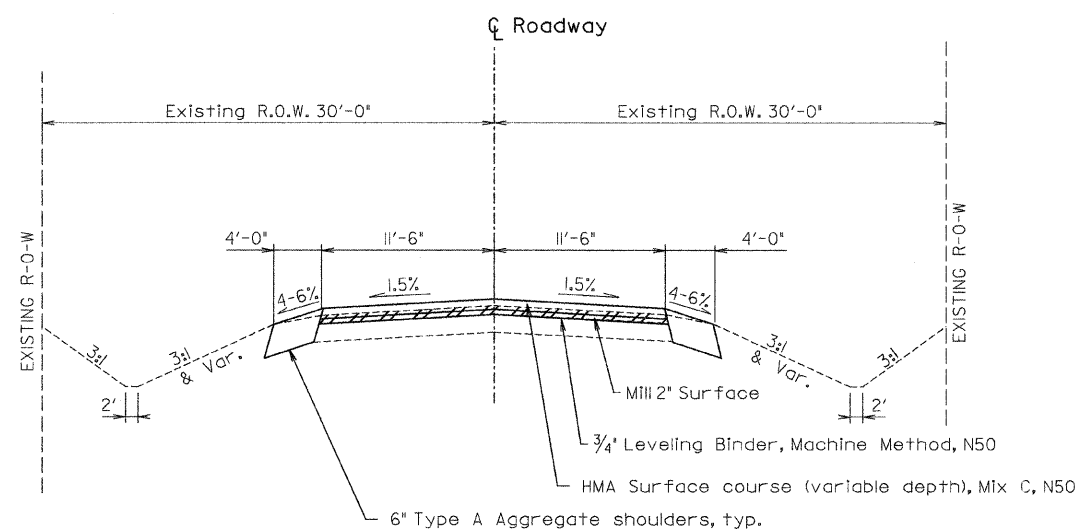
NOTES:
 FUNCTIONAL CLASS - RURAL MAJOR COLLECTOR
 CURRENT ADT = 1050
 SEE PLAN AND PROFILE SHEETS FOR TAPERS.

STA. 8+37 TO STA. 9+55.50
 STA. 10+45.5 TO STA. 12+18

EXISTING BRIDGE SECTION



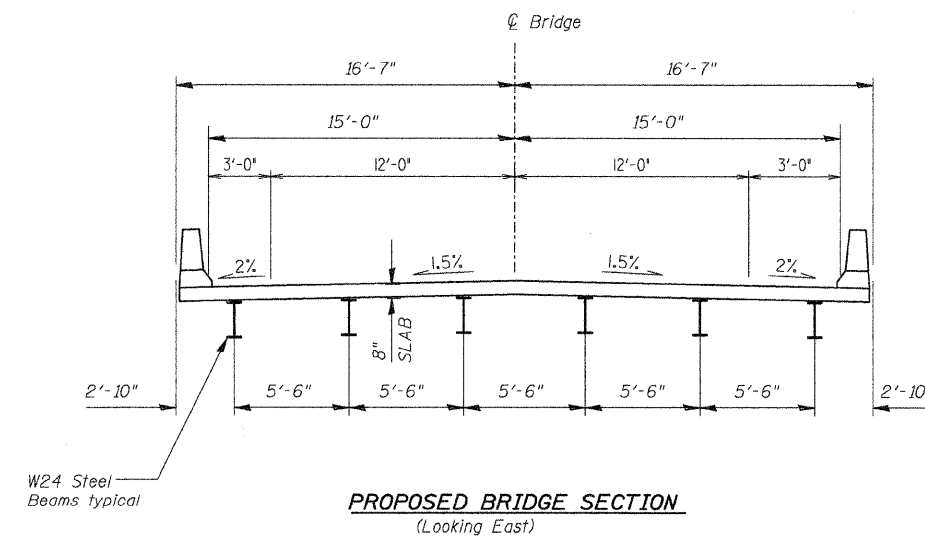
PROPOSED TYPICAL PAVEMENT SECTION



PROPOSED TYPICAL PAVEMENT

STA. 8+50 TO STA. 9+02.75
 STA. 10+97.25 TO STA. 11+50

PROPOSED BRIDGE SECTION



TYPICAL SECTIONS
 SECTION: 10-00962-00-BR
 CHAMPAIGN COUNTY
 Q STATION 10+00