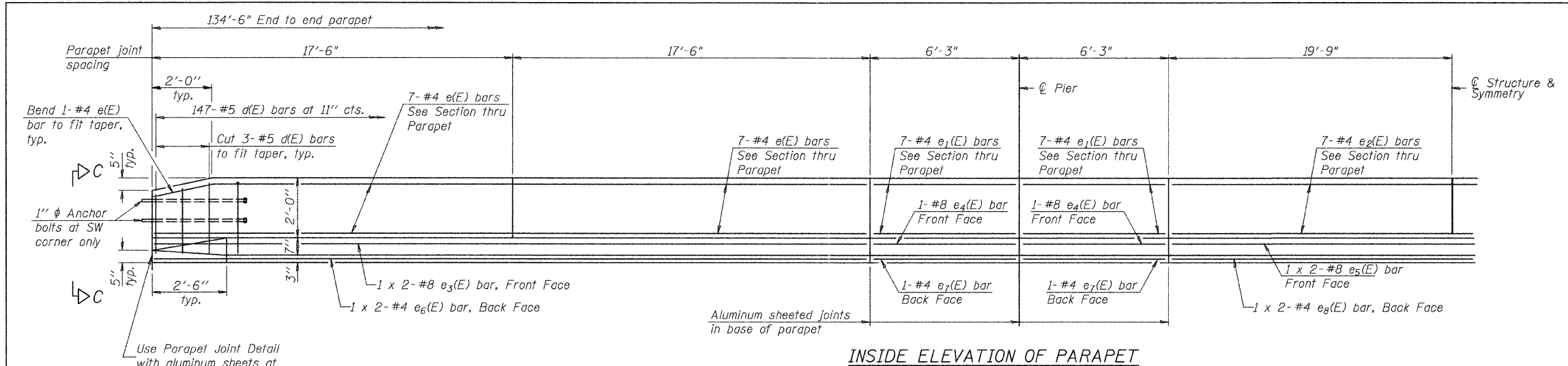


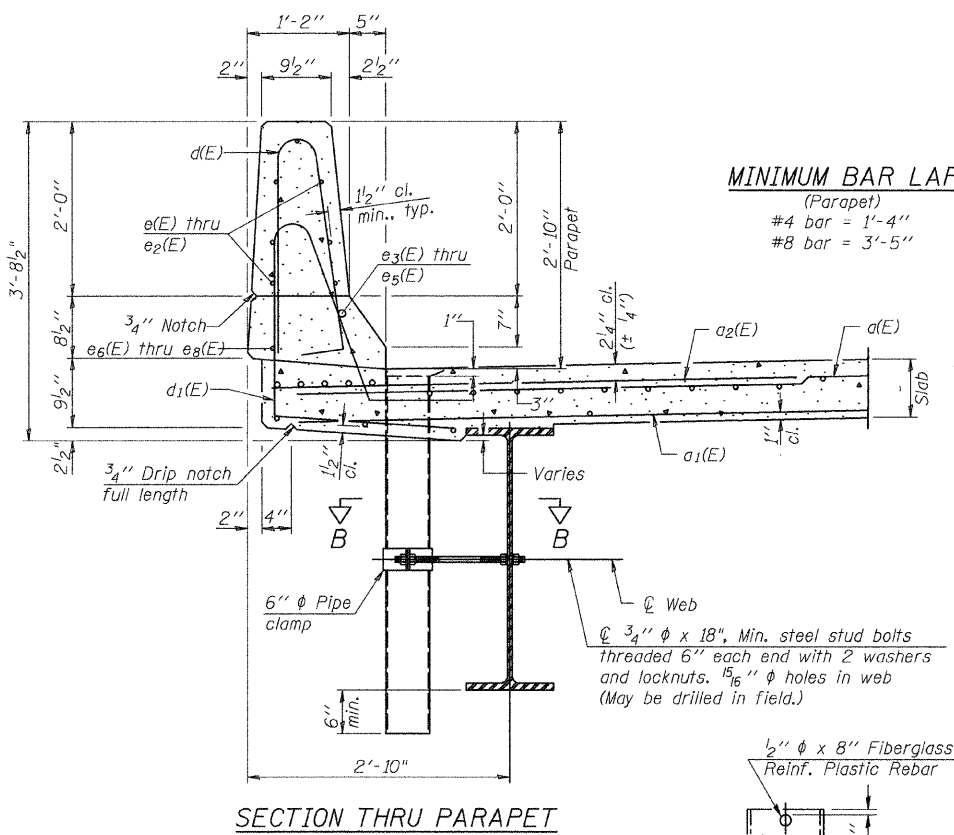
ROUTE NO.	SECTION	COUNTY	TOTAL SHEETS	SHEET NO.
C.H. II	10-00962-00-BR	CHAMPAIGN	40	16
STA.		TO STA.		
F.H.W.A. REG.		ILLINOIS PROJECT		



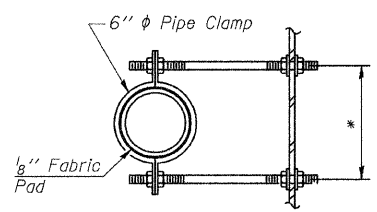
SUPERSTRUCTURE BILL OF MATERIAL

Bar	No.	Size	Length	Shape	
a(E)	231	#5	32'-6"	—	
a ₁ (E)	162	#5	32'-6"	—	
a ₂ (E)	232	#6	6'-0"	—	
b(E)	185	#5	29'-0"	—	
b ₁ (E)	70	#6	30'-0"	—	
b ₂ (E)	186	#5	24'-6"	—	
d(E)	294	#5	5'-7"	—	
d ₁ (E)	294	#5	7'-8"	—	
e(E)	56	#4	17'-2"	—	
e ₁ (E)	56	#4	5'-11"	—	
e ₂ (E)	28	#4	19'-5"	—	
e ₃ (E)	8	#8	19'-9"	—	
e ₄ (E)	8	#8	5'-11"	—	
e ₅ (E)	4	#8	22'-0"	—	
e ₆ (E)	8	#4	18'-6"	—	
e ₇ (E)	8	#4	5'-11"	—	
e ₈ (E)	4	#4	21'-0"	—	
m(E)	36	#6	7'-9"	—	
m ₁ (E)	10	#6	32'-6"	—	
s(E)	72	#5	6'-2"	⊏	
s ₁ (E)	72	#4	7'-2"	⊏	
v(E)	64	#5	3'-4"	⊏	
Reinforcement Bars, Epoxy Coated Concrete Superstructure				Pound	37,110
				Cu. Yds.	157.6

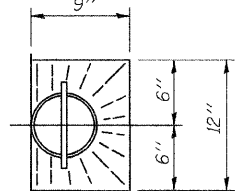
Bars indicated thus 1 x 2 - #5 etc. indicates 1 line of bars with 2 lengths per line.



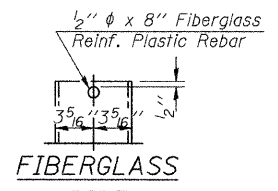
SECTION THRU PARAPET



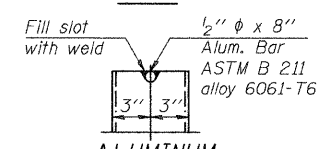
SECTION B-B



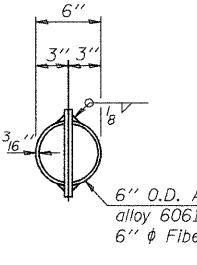
TOP PLAN



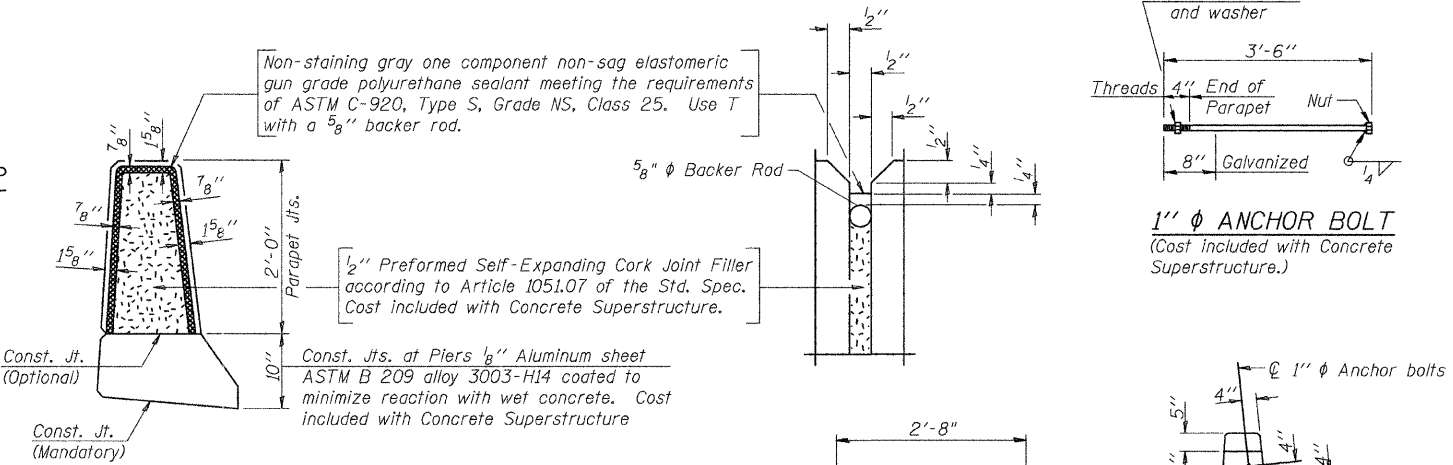
FIBERGLASS PIPE



ALUMINUM TUBE

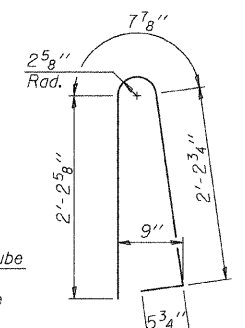


TOP PLAN (Showing Aluminum Tube)

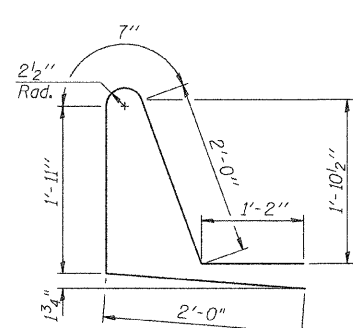


PARAPET JOINT DETAILS

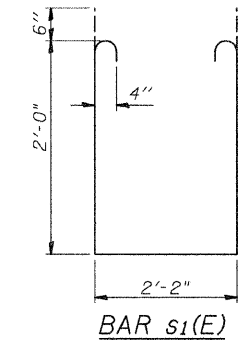
Notes:
The exterior surfaces of the floor drains shall be painted with the finish coat as specified in the special provisions for Cleaning and Painting New Metal Structures. The exterior surfaces of the drains shall be cleaned according to Society of Protective Coatings Spec. SSPC-SP1 prior to painting. Fiberglass pipe shall conform to ASTM D 2996, with short-time rupture strength hoop tensile stress of 30,000 p.s.i. minimum.



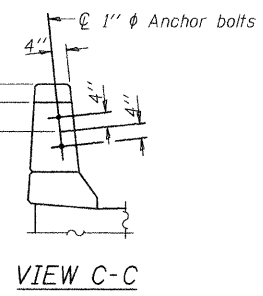
BAR d(E)



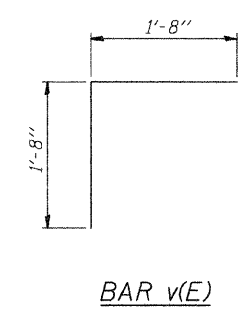
BAR d₁(E)



BAR s₁(E)



VIEW C-C



BAR v(E)

SUPERSTRUCTURE DETAILS

SECTION: 10-00962-00-BR
CHAMPAIGN COUNTY
Q. STATION 10+00