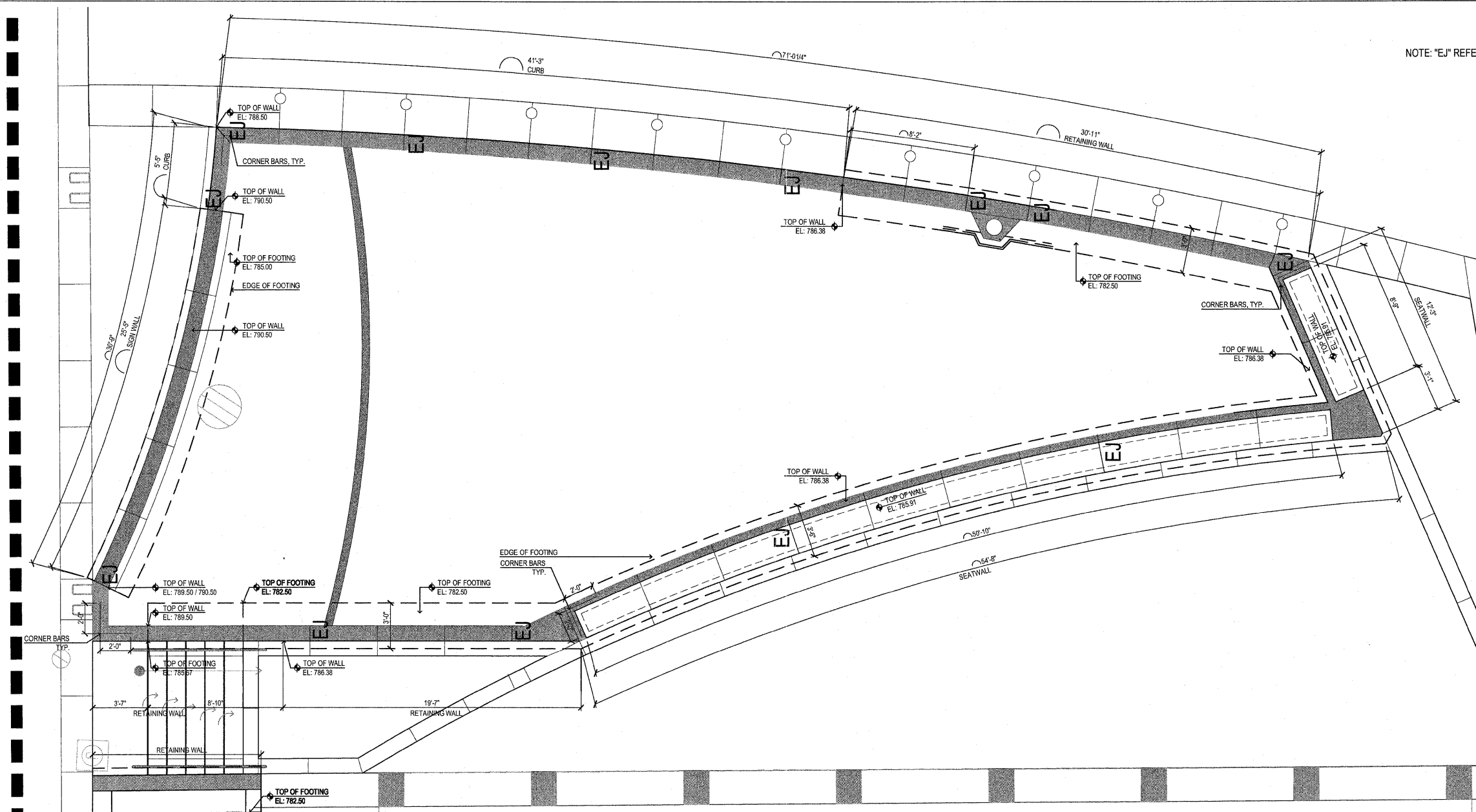
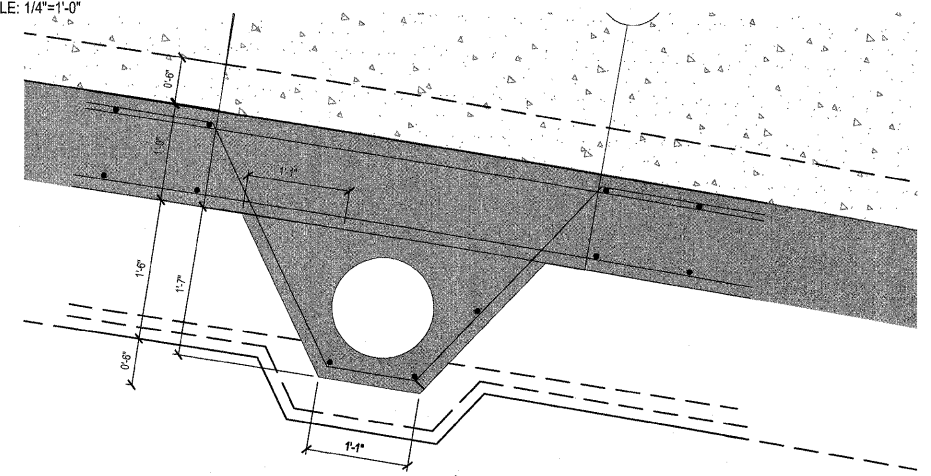


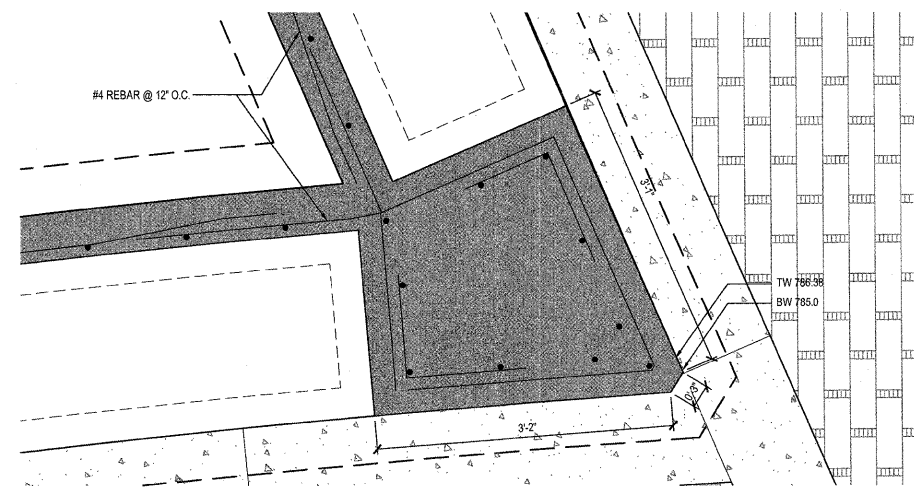
NOTE: "EJ" REFERS TO AN EXPANSION JOINT



**A** EAST ISLAND - WALL AND FOOTING PLAN  
SCALE: 1/4"=1'-0"



**B** EAST ISLAND - LIGHT FOUNDATION DETAIL  
SCALE: 1"=1'-0"



**C** EAST ISLAND - SEATWALL CORNER DETAIL  
SCALE: 1"=1'-0"

FILE NAME =  
PLOT DATE =

DESIGNED — P.L.S.	REVISED — 04-01-11
DRAWN — R.N.R.	REVISED — 04-22-11
CHECKED — J.M.B.	REVISED —
DATE — 3-11	REVISED —

STATE OF ILLINOIS  
DEPARTMENT OF TRANSPORTATION

L2.5 - EAST - WALL AND FOOTING PLAN

SCALE : SHEET NO. 24 OF 40 SHEETS STA. TO STA.

F.A.U. RTE.	SECTION	COUNTY	TOTAL SHEETS	SHEET NO.
---	10-00243-02-LS	MCLEAN	40	24
FED. ROAD DIST. NO. -- ILLINOIS FED. AID PROJECT			CONTRACT NO. 91461	