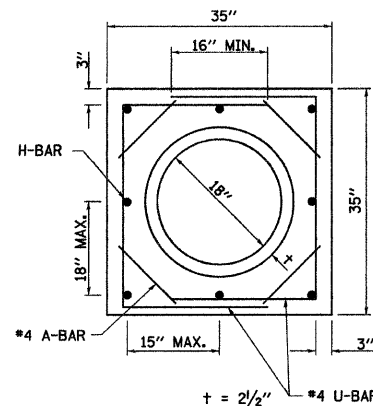
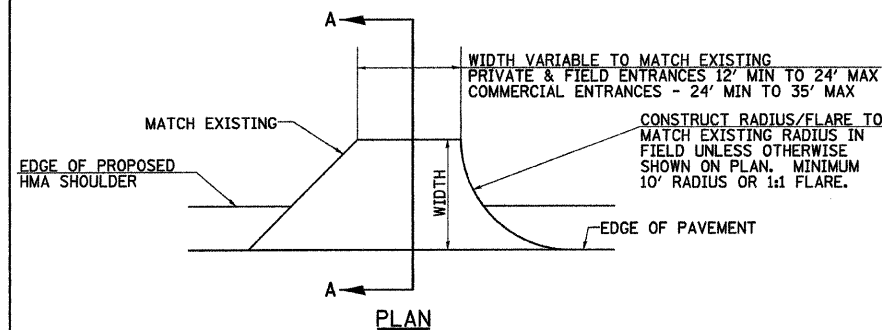
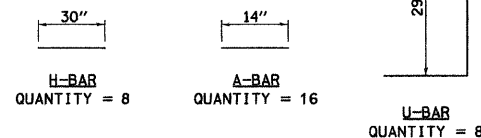


DATE	BY	REVIEWED	NOTED	FILE NAME
PLAN		NOTED	FILE NAME	

DATE	BY	REVIEWED	NOTED	FILE NAME
PROFILE		NOTED	FILE NAME	

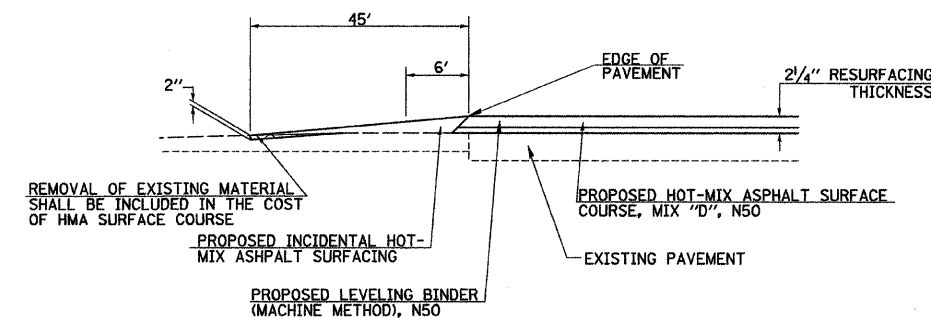
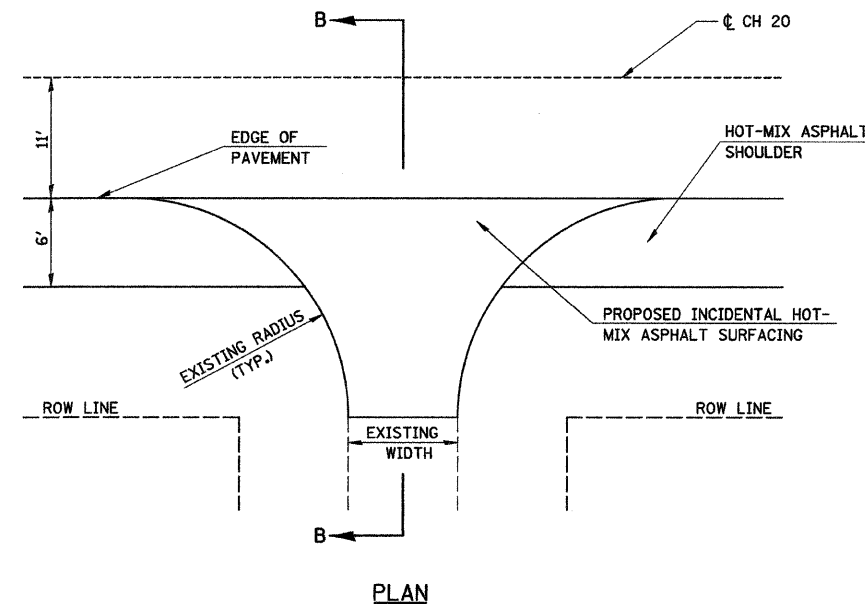


POINT OF CULVERT EXTENSION JOINT SHOULD BE AS TIGHT AS POSSIBLE

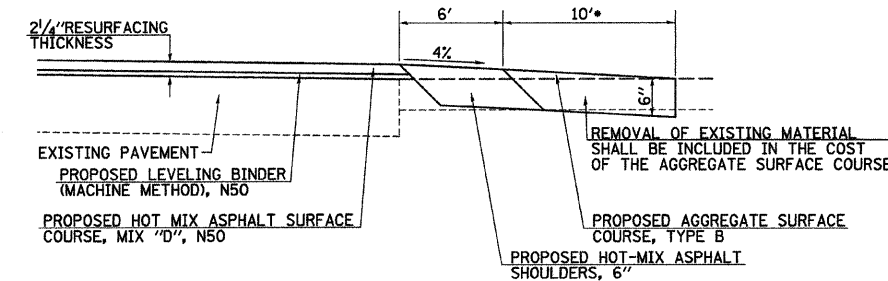


BILL OF MATERIAL  
REINFORCEMENT BARS - 60 LB  
CONCRETE COLLAR - 0.63 CY  
(INFORMATION ONLY)

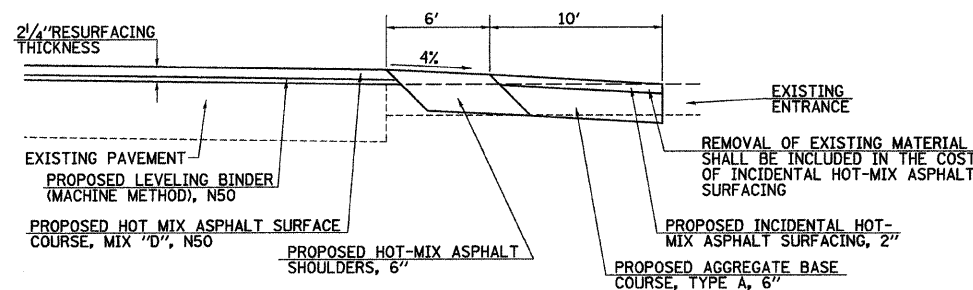
### CONCRETE COLLAR FOR PIPE CULVERT EXTENSION



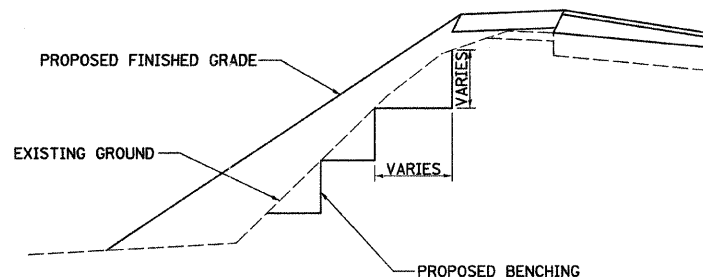
### SECTION B-B PROPOSED SIDEROAD TAPER SIDEROAD DETAIL 1620E



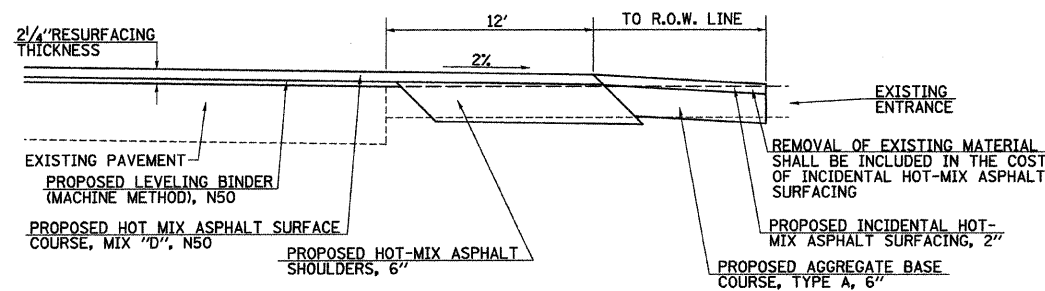
### SECTION A-A 113+79.70 RT, 117+58.40 RT \*TO R.O.W. LINE FOR ENTRANCE AT 117+58.40 RT



### SECTION A-A 106+84.4 RT, 107+93.10 RT

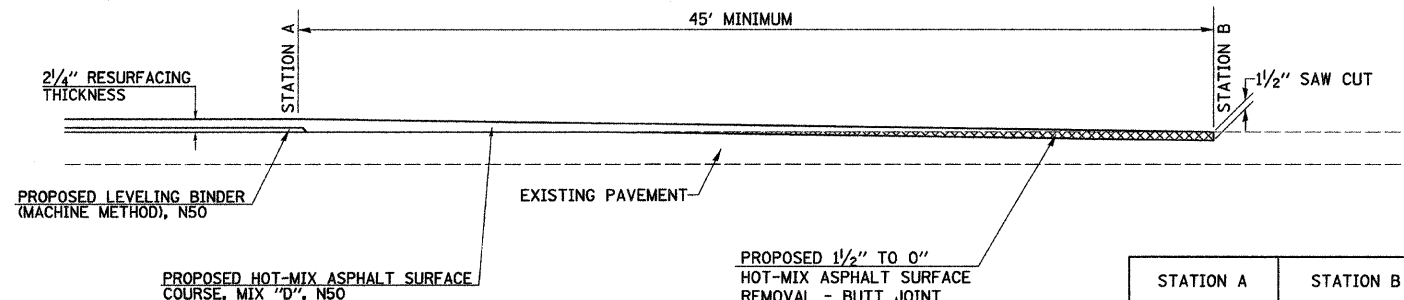


### DETAIL OF TYPICAL BENCHING ON EXISTING EMBANKMENT



### SECTION A-A 120+41.70 RT, 121+50.00 RT

### ENTRANCE TAPERS



### BUTT JOINT DETAIL

STATION A	STATION B
101+45	101+00
122+20	122+65

FILE NAME =  
V:\Transportation\2012\20120801.dgn

USER NAME = bborghman  
DESIGNED - BMB  
DRAWN - JMO  
PLOT SCALE = 4.9989' / IN.  
CHECKED - BMB  
PLOT DATE = 9/27/2010

REVISED -  
REVISED -  
REVISED -  
REVISED -

STATE OF ILLINOIS  
DEPARTMENT OF TRANSPORTATION

COUNTY HIGHWAY 20 (FAS 567)  
SPECIAL DETAILS

SCALE: N/A SHEET NO. 1 OF 1 SHEETS STA. TO STA.

F.A.S. RTE. 567 SECTION 09-00022-06-SP COUNTY MASON TOTAL SHEETS 35 SHEET NO. 10 CONTRACT NO. 93543 ILLINOIS FED. AID PROJECT