

INDEX OF SHEETS:

SHEET NO.	SHEET
1	TITLE SHEET
2	SUMMARY OF QUANTITIES
	GENERAL NOTES
3	TYPICAL CROSS SECTIONS
4-10	PLAN SHEETS
11	SIDE ROAD & ENTRANCE DETAILS
	BUTT JOINT DETAIL
STANDARD	701001-02
STANDARD	701006-03
STANDARD	701301-04
STANDARD	701306-03
STANDARD	701901-01
STANDARD	BLR 24-2

STATE OF ILLINOIS
DEPARTMENT OF TRANSPORTATION
DIVISION OF HIGHWAYS
PLANS FOR PROPOSED
SURFACE TRANSPORTATION/RURAL PROGRAM
LOCAL AGENCY PAVEMENT PRESERVATION

FAS 432 (CH 14) SECTION 11-00206-01-RS ADAMS COUNTY
PROJECT NO. RS-0432(125) JOB NO. C-96-215-11

COUNTY	ROUTE	SECTION	TOTAL SHEETS	SHEET NO.
ADAMS	FAS 432	11-00206-01-RS	11	1

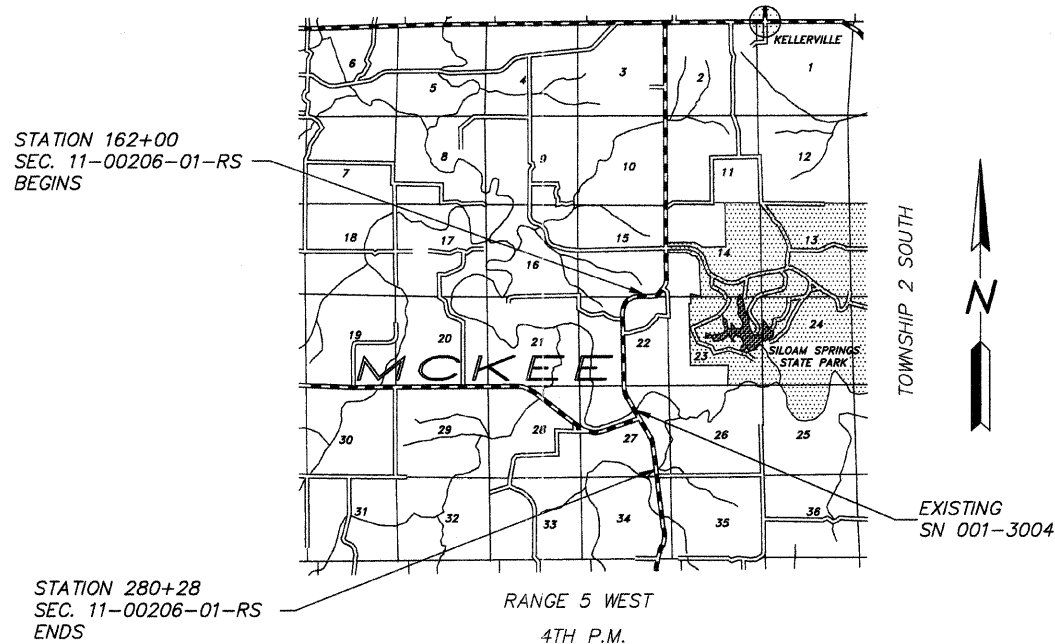


PROPOSED IMPROVEMENT MARKED THUS —

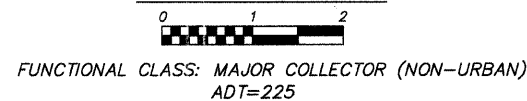
THESE PLANS WERE PREPARED BY ME OR BY A FULL-TIME MEMBER OF MY STAFF WORKING UNDER MY PERSONAL SUPERVISION.



SUBMITTED BY James R. Frankenburg DATE 4/12/11
COUNTY ENGINEER
LICENSE NO. 062-044792
LIC. EXPIRES 11/30/2011



LOCATION MAP



PROPOSED IMPROVEMENT CONSISTS OF PLACING 1 1/2" HOT-MIX ASPHALT SURFACE COURSE, MIX "C", N50 OVER 3/4" OF LEVELING BINDER (MACHINE METHOD) N50 ON THE EXISTING 22' ROADWAY WITH OTHER MISCELLANEOUS CONSTRUCTION

UTILITIES:

J.U.L.I.E. _____ 1-800-892-0123
GENERAL TELEPHONE _____ QUINCY, IL
ADAMS RURAL ELECTRICAL CO-OP _____ CAMP POINT, IL

GROSS LENGTH:
STA. 162+00 TO STA. 280+28 = 11,828.00 FT.
BRIDGE OMISSION:
STA. 235+22.35 TO STA. 240+25.77 = 503.42 FT.
NET LENGTH TO BE IMPROVED: 11,324.58 FT. = 2.145 MILES

APPROVED	<u>April 12</u>	2011
	<u>James R. Frankenburg</u>	COUNTY ENGINEER
PASSED	<u>April 27</u>	2011
	<u>Ron Wehabeau</u>	DISTRICT ENGINEER OF CONSTRUCTION
PASSED	<u>April 27</u>	2011
	<u>Terrence H. Fountain</u>	DISTRICT ENGINEER OF LOCAL ROADS AND STREETS
RELEASING FOR BID BASED ON LIMITED REVIEW	<u>April 27</u>	2011
	<u>Roger L. Driskell</u>	DEPUTY DIRECTOR OF HIGHWAYS REGION FOUR ENGINEER

STATE OF ILLINOIS
DEPARTMENT OF TRANSPORTATION

CONTRACT NO. 93552