

BENCHMARK:

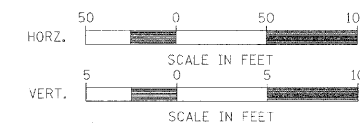
TOP OF SURVEY POINT NO. 3 (IRON PIN)
 STA. 14+54.4, 193.3' LT. (SEE TIC POINTS)
 ELEV. 615.87

EXISTING STRUCTURE NO. 058-6007

THREE SPAN CONCRETE DECK BEAM BRIDGE ON PILE BENT
 ABUTMENTS AND PIERS.
 117'-6" BK.-BK. ABUTMENTS
 28'-0" O.-O. DECK

CITY OF DECATUR
 (CANNON PARK)

SURVEY CONTROL POINT NO. 3
 N99819.15, E99818.89
 ELEV. 615.87

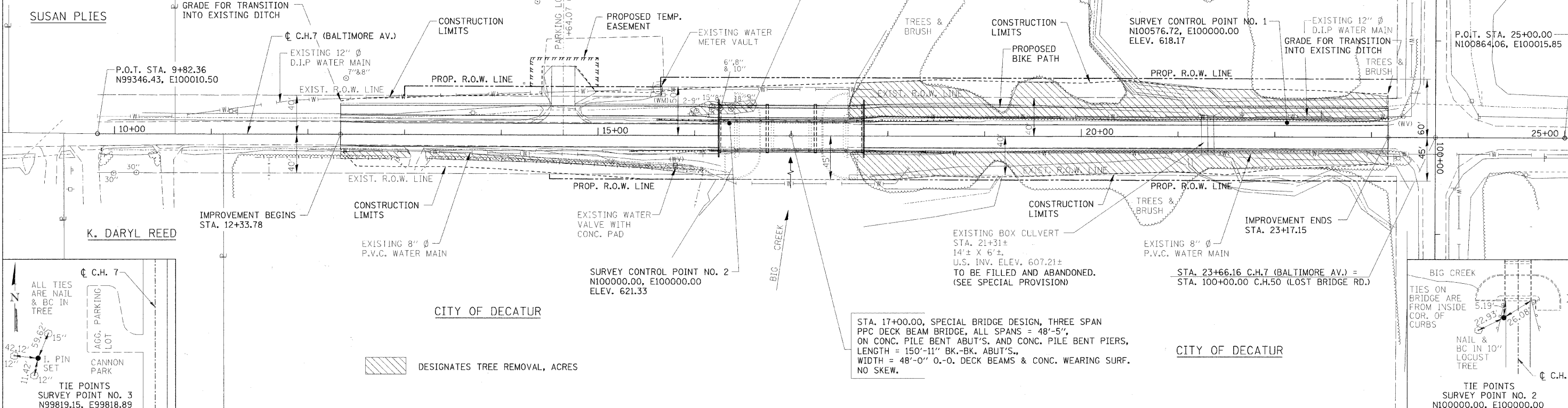


RTE.	SECTION	COUNTY	TOTAL SHEETS	SHEET NO.
C.H. 7	05-00204-00-BR	MACON	21	3
STA. 12+33.78		TO STA. 23+17.15		
FED. ROAD DIST. NO.		ILLINOIS PROJECT:		

CONTRACT NO. 95658

DATE	BY	REVISION

DATE	BY	REVISION



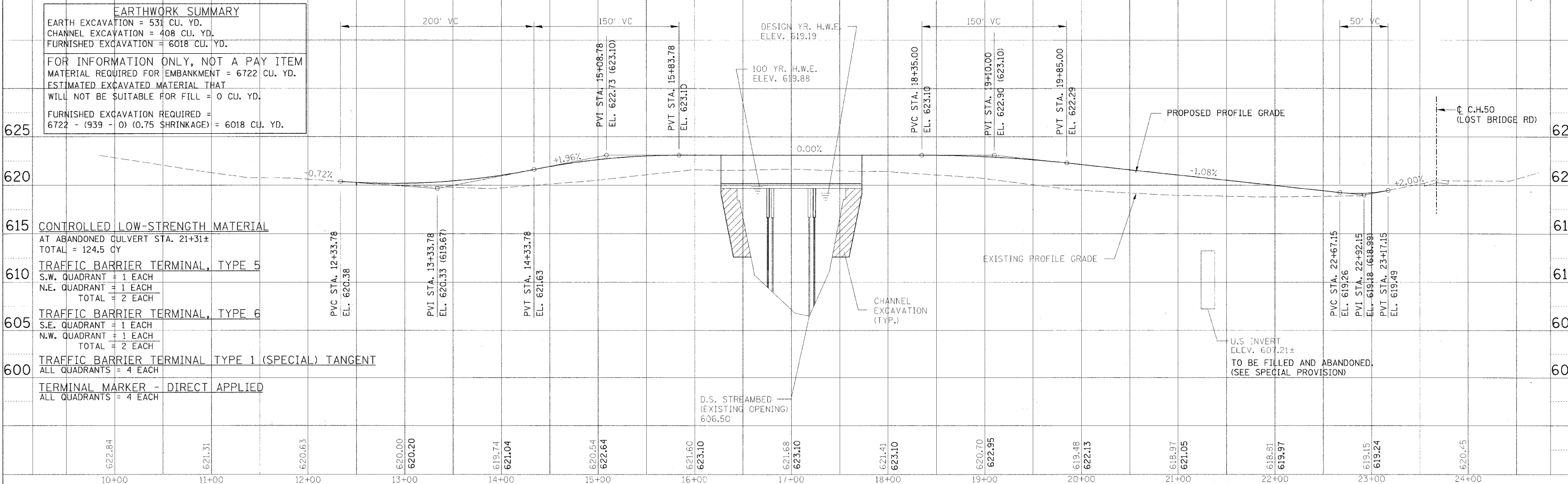
STA. 17+00.00, SPECIAL BRIDGE DESIGN, THREE SPAN
 PPC DECK BEAM BRIDGE, ALL SPANS = 48'-5",
 ON CONC. PILE BENT ABUT'S. AND CONC. PILE BENT PIERS,
 LENGTH = 150'-11" BK.-BK. ABUT'S.,
 WIDTH = 48'-0" O.-O. DECK BEAMS & CONC. WEARING SURF.
 NO SKEW.

EARTHWORK SUMMARY

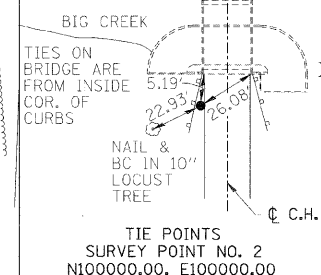
EARTH EXCAVATION = 531 CU. YD.
 CHANNEL EXCAVATION = 408 CU. YD.
 FURNISHED EXCAVATION = 6018 CU. YD.

FOR INFORMATION ONLY, NOT A PAY ITEM
 MATERIAL REQUIRED FOR EMBANKMENT = 6722 CU. YD.
 ESTIMATED EXCAVATED MATERIAL THAT
 WILL NOT BE SUITABLE FOR FILL = 0 CU. YD.

FURNISHED EXCAVATION REQUIRED =
 6722 - (939 - 0) (0.75 SHRINKAGE) = 6018 CU. YD.



- 615 CONTROLLED LOW-STRENGTH MATERIAL**
 AT ABANDONED CULVERT STA. 21+31±
 TOTAL = 124.5 CY
- 610 TRAFFIC BARRIER TERMINAL, TYPE 5**
 S.W. QUADRANT = 1 EACH
 N.E. QUADRANT = 1 EACH
 TOTAL = 2 EACH
- 605 TRAFFIC BARRIER TERMINAL, TYPE 6**
 S.E. QUADRANT = 1 EACH
 N.W. QUADRANT = 1 EACH
 TOTAL = 2 EACH
- 600 TRAFFIC BARRIER TERMINAL TYPE 1 (SPECIAL) TANGENT**
 ALL QUADRANTS = 4 EACH
- TERMINAL MARKER - DIRECT APPLIED**
 ALL QUADRANTS = 4 EACH



DESIGNATES TREE REMOVAL, ACRES

Station	Elevation
10+00	622.84
11+00	621.31
12+00	620.63
13+00	620.00
14+00	619.74
15+00	620.54
16+00	621.60
17+00	621.68
18+00	621.41
19+00	620.70
20+00	619.48
21+00	618.97
22+00	618.81
23+00	619.15
24+00	620.45