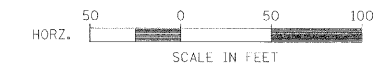


BENCHMARK:

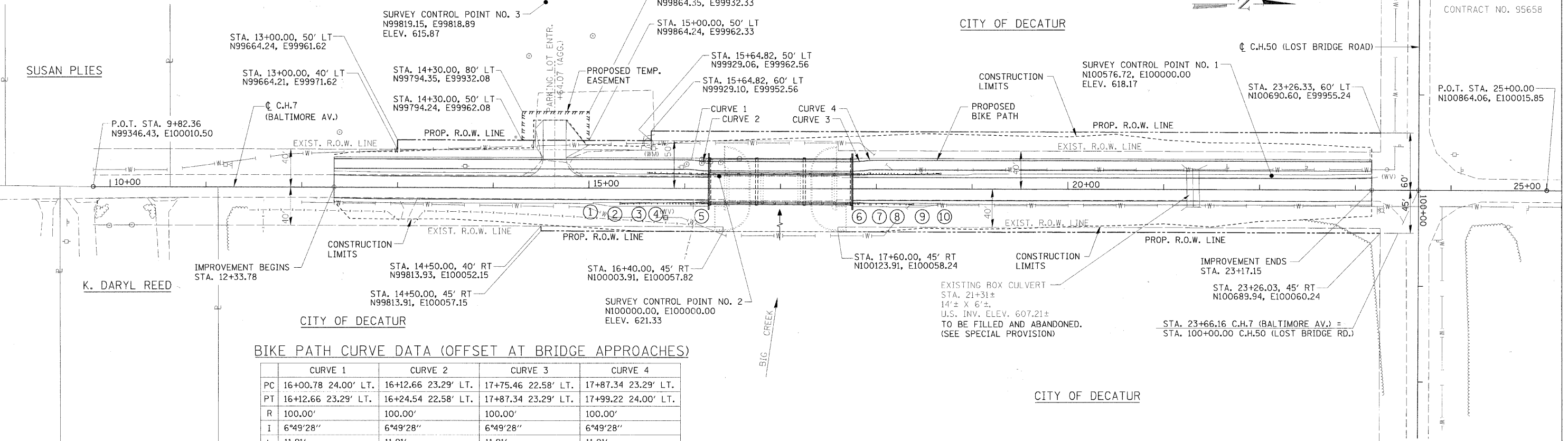
TOP OF SURVEY POINT NO. 3 (IRON PIN)
 STA. 14+54.4, 193.3' LT. (SEE TIE POINTS)
 ELEV. 615.87

CITY OF DECATUR
 (CANNON PARK)



ROUTE	SECTION	COUNTY	SHEET NO.	TOTAL SHEETS
C.H. 7	05-00204-00-BR	MACON	- 21	4
STA. 12+33.78		TO STA. 23+17.15		
FED. ROAD DIST. NO.		ILLINOIS PROJECT:		

DATE	BY
DATE	BY
DATE	BY
DATE	BY
DATE	BY



BIKE PATH CURVE DATA (OFFSET AT BRIDGE APPROACHES)

	CURVE 1	CURVE 2	CURVE 3	CURVE 4
PC	16+00.78 24.00' LT.	16+12.66 23.29' LT.	17+75.46 22.58' LT.	17+87.34 23.29' LT.
PT	16+12.66 23.29' LT.	16+24.54 22.58' LT.	17+87.34 23.29' LT.	17+99.22 24.00' LT.
R	100.00'	100.00'	100.00'	100.00'
I	6°49'28"	6°49'28"	6°49'28"	6°49'28"
L	11.91'	11.91'	11.91'	11.91'
D	57°17'45"	57°17'45"	57°17'45"	57°17'45"
T	5.96'	5.96'	5.96'	5.96'
E	0.18'	0.18'	0.18'	0.18'

SHOULDER WIDENING FOR GUARDRAIL TERMINALS

- ① STA. 15+04.40, 16' RT.
- ② STA. 15+22.40, 19' RT.
- ③ STA. 15+57.40, 19' RT.
- ④ STA. 15+60.40, 18.5' RT.
- ⑤ STA. 16+24.54, 18.5' RT.
- ⑥ STA. 17+75.46, 18.5' RT.
- ⑦ STA. 18+11.13, 18.5' RT.
- ⑧ STA. 18+14.13, 19' RT.
- ⑨ STA. 18+49.13, 19' RT.
- ⑩ STA. 18+67.13, 16' RT.

PROPOSED STRUCTURE LAYOUT

SOUTH ABUTMENT

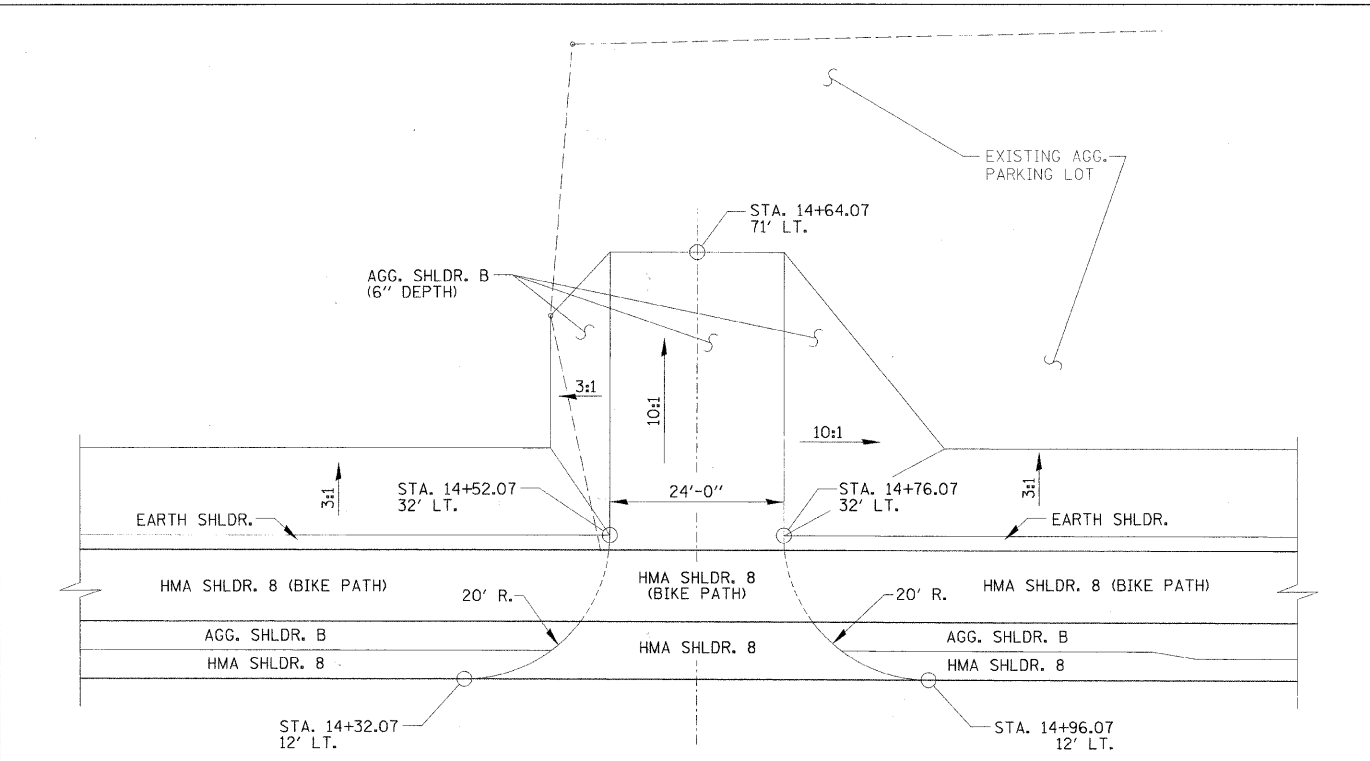
- BK. OF S. ABUT. STA. 16+24.54, 7.50' LT. N99988.63, E100005.27
- ☐ S. ABUT. STA. 16+25.83, 7.50' LT. N99989.93, E100005.27
- FRONT FACE OF S. ABUT. STA. 16+27.12, 7.50' LT. N99991.22, E100005.27

NORTH ABUTMENT

- BK. OF N. ABUT. STA. 17+75.46, 7.50' LT. N100139.55, E100005.80
- ☐ N. ABUT. STA. 17+74.17, 7.50' LT. N100138.26, E100005.79
- FRONT FACE OF N. ABUT. STA. 17+72.88, 7.50' LT. N100136.97, E100005.79

NOTE: ALL COORDINATES ABOVE ARE GIVEN AT ☐ OF STRUCTURE. SEE SHEET 3 OF 20 FOR ☐ ROADWAY COORDINATES.

DATE	BY
DATE	BY
DATE	BY
DATE	BY
DATE	BY



CANNON PARK ENTRANCE DETAIL

HORIZONTAL LAYOUT