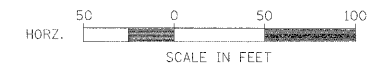


CITY OF DECATUR
(CANNON PARK)

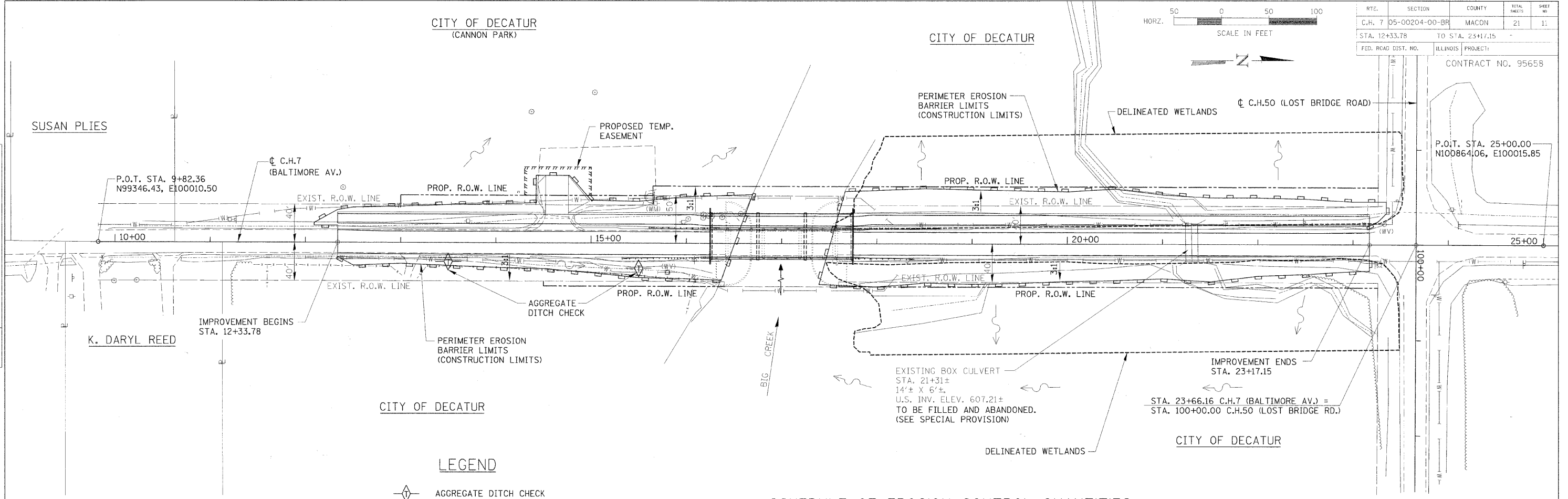
CITY OF DECATUR



RTE.	SECTION	COUNTY	TOTAL SHEETS	SHEET NO.
C.H. 7	05-00204-00-BR	MACON	21	11
STA. 12+33.78		TO STA. 23+17.15		
FED. ROAD DIST. NO.		ILLINOIS PROJECT:		
CONTRACT NO. 95658				

PLAN	DATE	BY
SURVEYED		
ALIGNED		
CHECKED		
NOTE BOOK		
NO.		
FILE NAME		

PROFILE	DATE	BY
SURVEYED		
GRADES CHECKED		
NO.		
FILE NAME		



- LEGEND**
- AGGREGATE DITCH CHECK
 - PERIMETER EROSION BARRIER
 - DRAINAGE PATTERN

NOTES

ALL ITEMS SHALL BE CONSTRUCTED AS SHOWN ON STANDARD 280001 AND AS DIRECTED BY THE ENGINEER. MAINTENANCE AND CLEANING OF THE EROSION CONTROL ITEMS SHALL BE INCLUDED IN THE RESPECTIVE EROSION CONTROL PAY ITEM.

CONSTRUCTION VEHICLES SHALL ENTER AND EXIT THE CONSTRUCTION SITE FROM C.H. 7 (BALTIMORE AVE.).

STORM WATER POLLUTION PREVENTION PLAN

- DESCRIPTION OF INTENDED SEQUENCE FOR MAJOR CONSTRUCTION ACTIVITIES:**
- REMOVAL OF EXISTING STRUCTURE.
 - EXCAVATION WILL BE COMPLETED ALONG THE ENTIRE LENGTH OF THE JOB TO REMOVE THE EXISTING ROADWAY AND GRADE THE PROPOSED DITCHES.
 - NECESSARY EMBANKMENT WILL BE PLACED ALONG THE ENTIRE LENGTH OF THE JOB FOR THE PROPOSED ROADWAY.
 - PLACEMENT, MAINTENANCE, REMOVAL AND PROPER CLEAN-UP OF TEMPORARY EROSION CONTROL ITEMS, SUCH AS PERIMETER EROSION BARRIER, AGGREGATE DITCH CHECKS, TEMPORARY SEEDING AND OTHER MISCELLANEOUS EROSION CONTROL MEASURES.
 - CONSTRUCT NEW BRIDGE SUBSTRUCTURE UNITS.
 - PLACEMENT OF PERMANENT EROSION CONTROL ITEMS, INCLUDING RIPRAP AND SEEDING.
 - CONSTRUCT NEW BRIDGE SUPERSTRUCTURE AND APPROACH ROADWAY.
 - FINAL GRADING AND OTHER MISCELLANEOUS ITEMS.

SCHEDULE OF EROSION CONTROL QUANTITIES

- SEEDING, CLASS 2**
AREA INSIDE OF CONSTRUCTION LIMITS, LESS ROADWAY.
TOTAL = 0.8 ACRES
- NITROGEN FERTILIZER NUTRIENT**
TOTAL = 72 POUNDS
- PHOSPHORUS FERTILIZER NUTRIENT**
TOTAL = 72 POUNDS
- POTASSIUM FERTILIZER NUTRIENT**
TOTAL = 72 POUNDS
- MULCH, METHOD 2**
TOTAL = 1.6 ACRES
- EARTH EXCAVATION FOR EROSION CONTROL**
TOTAL = 1 CU. YD.
- TEMPORARY EROSION CONTROL SEEDING**
100 LBS/ACRE X 0.8 ACRES = 80 POUNDS
- AGGREGATE DITCH CHECKS**
STA. 13+50, RT. = 1 TON
STA. 15+50, RT. = 1 TON
TOTAL = 2 TON
- PERIMETER EROSION BARRIER**
TO BE CONSTRUCTED ALONG EACH STREAM BANK FROM EAST CONST. LIMITS TO WEST CONST. LIMITS & ALONG LT. & RT. EMBANKMENT FULL LENGTH OF PROJECT. LAYOUT MAY VARY, AS DIRECTED BY THE ENGINEER.
TOTAL = 2333 FOOT
- STONE RIPRAP, CLASS A4**
PLACED AS SHOWN ON GENERAL PLAN AND ELEVATION, SHEET 12 OF 20.
TOTAL = 480 SQ. YD.
- FILTER FABRIC**
PLACED AS SHOWN ON STD. 280001.
TOTAL = 46 SQ. YD.

STORM WATER POLLUTION PREVENTION AND EROSION CONTROL PLAN