

**STATE OF ILLINOIS  
DEPARTMENT OF TRANSPORTATION  
SAFE ROUTES TO SCHOOLS  
PROPOSED SIDEWALK IMPROVEMENTS**

**SECTION 10-00007-00-SW**

**JOB No. C-40-093-09**

**CONTRACT No. 95659**

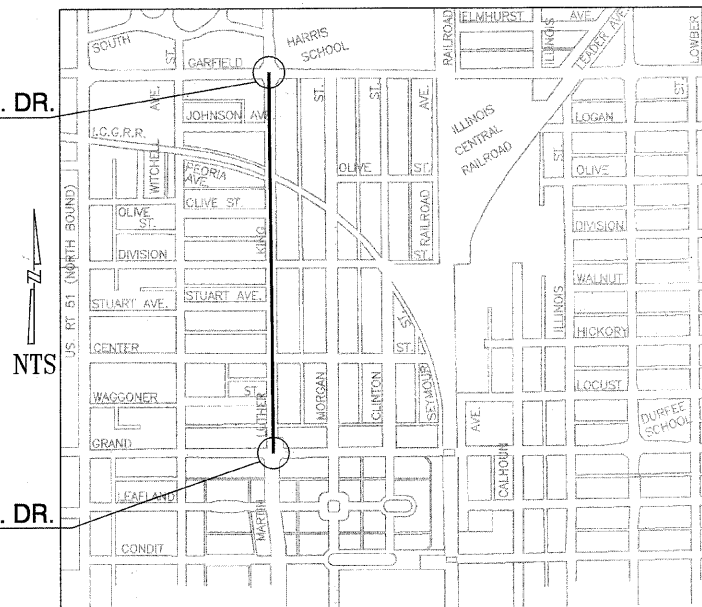
**FEDERAL SRTS PROJECT No. 4009(104)**

**CITY OF DECATUR**

**MACON COUNTY**

MARTIN LUTHER KING JR. DR.  
IMPROVEMENT ENDS  
STA. 57+00

MARTIN LUTHER KING JR. DR.  
IMPROVEMENT BEGINS  
STA. 30+00



**LOCATION MAP**  
IMPROVEMENT LENGTH = 2,700 FT = 0.51 MILES

INDEX OF SHEETS

1. COVER SHEET, INDEX OF SHEETS AND CONSTRUCTION STANDARDS
2. GENERAL NOTES, SUMMARY OF QUANTITIES AND TYPICAL SECTION
3. PLAN - N. MARTIN LUTHER KING JR DRIVE 30+00 TO 46+00
4. PLAN - N. MARTIN LUTHER KING JR DRIVE 46+00 TO 57+00

ILLINOIS DEPARTMENT OF TRANSPORTATION STANDARDS

- 424001-05 CURB RAMPS FOR SIDEWALKS
- 606001-04 CONCRETE CURB TYPE B AND COMBINATION CONCRETE CURB AND GUTTER
- 701502-4 URBAN LANE CLOSURE, 2L, 2W, WITH BIDIRECTIONAL LEFT TURN LANE
- 701606-07 URBAN LANE CLOSURE, MULTILANE, 2W, WITH MOUNTABLE MEDIAN
- 701701-07 URBAN LANE CLOSURE, MULTILANE INTERSECTION
- 701801-04 LANE CLOSURE MULTILANE 1W OR 2W CROSSWALK OR SIDEWALK CLOSURE
- 701901-01 TRAFFIC CONTROL DEVICES



*Matthew C. Newell* 5-11-11  
MATTHEW C. NEWELL, P.E.  
CITY ENGINEER  
No. 062-060331 EXP. 11/30/11

APPROVED: _____, 20 11  CITY ENGINEER
PASSED: _____, 20 11  DISTRICT SEVEN ENGINEER OF LOCAL ROADS AND STREETS
RELEASING FOR BID BASED ON LIMITED REVIEW: _____, 20 11  DEPUTY DIRECTOR OF HIGHWAYS REGION FOUR ENGINEER
STATE OF ILLINOIS DEPARTMENT OF TRANSPORTATION

UTILITY / MUNICIPAL CONTACTS

<b>SEWER:</b> CITY OF DECATUR # 1 G. K. ANDERSON PL. DECATUR, IL. 62523 (217) 424-2747	<b>WATER:</b> CITY OF DECATUR # 1 G. K. ANDERSON PL. DECATUR, IL. 62523 (217) 424-2747	<b>ROADS:</b> CITY OF DECATUR # 1 G. K. ANDERSON PL. DECATUR, IL. 62523 (217) 424-2747	<b>SEWER:</b> DECATUR SANITARY DISTRICT 501 DIPPER LANE DECATUR, IL. 62522 (217) 422-6931
<b>TELEPHONE:</b> AT&T 990 SOUTHSIDE DRIVE DECATUR, IL. 62521 (217) 429-8596	<b>ELECTRIC AND GAS:</b> AMEREN IL CONSTRUCTION HOTLINE DECATUR, IL. 62526 (888) 695-4540	<b>CABLE TV:</b> COMCAST 1275 N. WATER DECATUR, IL. 62526 (217) 424-4206	

DATE		DRAWN BY		CHECKED BY		REVISIONS	

**CITY OF DECATUR  
DEPT OF PUBLIC WORKS**

CP 2010-07 SAFE ROUTES TO SCHOOLS  
DECATUR, IL

PROJ. MGR.: RRD	SHEET
PROJ. ENGR.: MCN	1 OF 4
DRAWN BY: RRD	
CHECKED BY:	
DATE:	
SCALE: NTS	
CP 2010-07	

It's smart. It's free. It's the law.

**Call before you dig.**  
**800.892.0123**

**GENERAL NOTES**

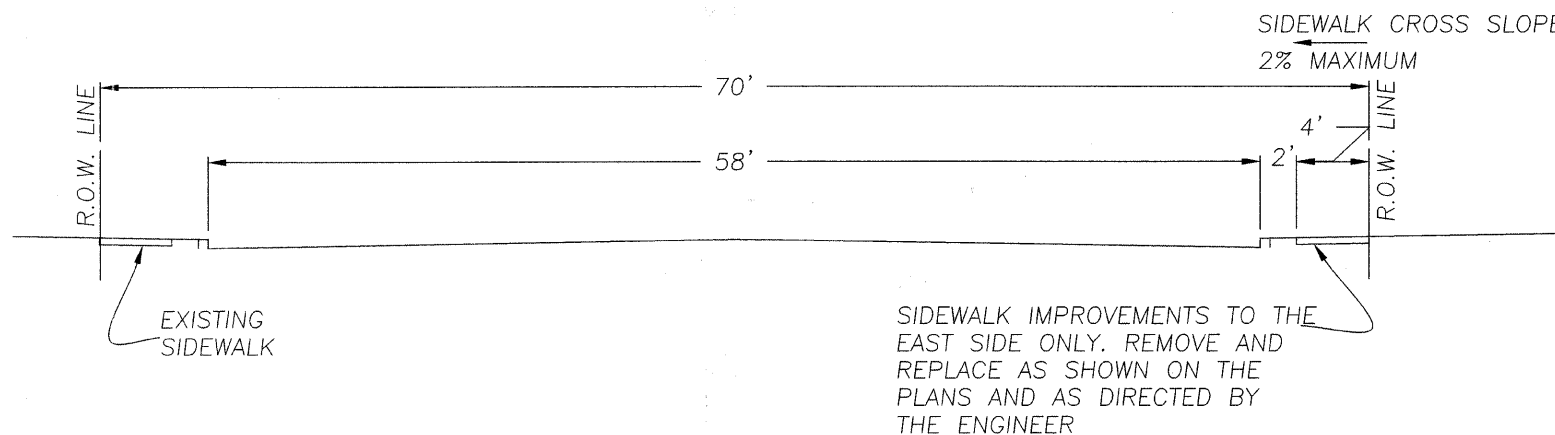
CONTACT JULIE AT 1-800-892-0123, 48 HOURS PRIOR TO ANY CONSTRUCTION FOR FIELD LOCATION OF BURIED UTILITIES. THE CONTRACTOR SHALL BE RESPONSIBLE FOR THE PROTECTION OF ALL PRIVATE AND PUBLIC UTILITIES EVEN THOUGH THEY MAY NOT BE SHOWN ON THE PLANS. ANY UTILITY THAT IS DAMAGED DURING CONSTRUCTION SHALL BE REPAIRED OR REPLACED TO THE SATISFACTION OF THE UTILITY OWNER BY THE CONTRACTOR. CONTRACTOR SHALL COORDINATE CONSTRUCTION ACTIVITIES WITH UTILITY COMPANIES.

CONTRACTOR SHALL BE RESPONSIBLE TO COORDINATE PROJECT ACTIVITIES WITH UTILITY COMPANIES TO "HOLD" UTILITY POLES AND PROTECT UTILITY COMPANY FACILITIES DURING THE CONSTRUCTION ACTIVITIES.

EXCESS EXCAVATED MATERIAL SHALL BE DISPOSED OF BY THE CONTRACTOR AT AN APPROPRIATE LOCATION OFF-SITE.

ALL DISTURBED AREAS SHALL BE FINAL SEEDING IN ACCORDANCE WITH SECTION 250 OF THE STANDARD SPECIFICATIONS. THIS WORK WILL NOT BE PAID FOR SEPARATELY BUT SHALL BE CONSIDERED INCLUDED IN CONTRACT.

CONTRACTOR SHALL MAINTAIN ACCESS TO ADJACENT HOMES, BUSINESSES AND SIDE ROADS AT ALL TIMES. CONTRACTOR SHALL SCHEDULE WORK, PREPARE DETOURS, AND CONSTRUCT TEMPORARY RAMPS AS NECESSARY TO PROVIDE FOR ACCESS. THIS WORK SHALL BE CONSIDERED INCLUDED IN THE CONTRACT.



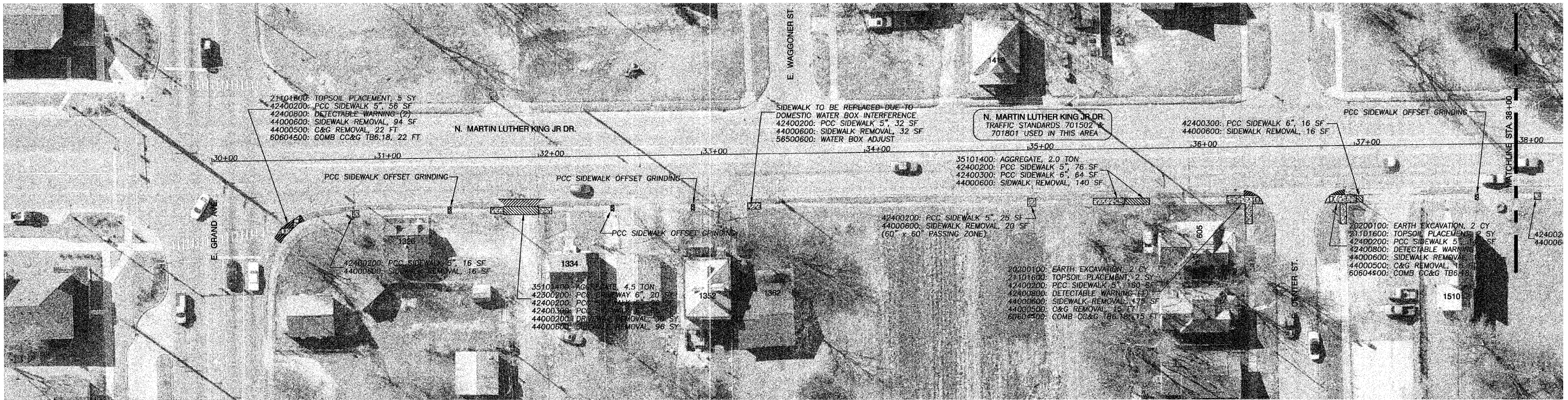
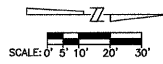
**M.L. KING DR. TYPICAL SECTION - GRAND AVE. TO GARFIELD AVE.**

**SUMMARY OF QUANTITIES**

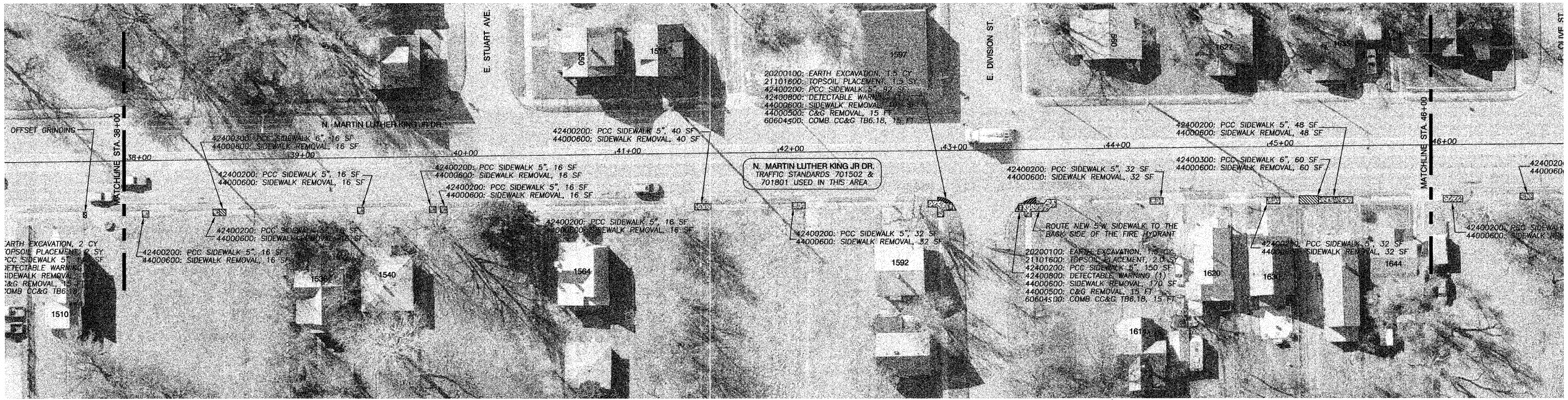
Item Number	Pay Item	QTY	Unit
20200100	EARTH EXCAVATION	12.5	CU YD
21101600	TOPSOIL FURNISH AND PLACE, VARIABLE DEPTH	32.5	SQ YD
36101400	AGGREGATE BASE COURSE, TYPE B	11	TON
42300200	PORTLAND CEMENT CONCRETE DRIVEWAY PAVEMENT, 6 INCH	20	SQ YD
42400200	PORTLAND CEMENT CONCRETE SIDEWALK 5 INCH	2,377	SQ FT
42400300	PORTLAND CEMENT CONCRETE SIDEWALK 6 INCH	301	SQ FT
42400800	DETECTABLE WARNINGS	84	SQ FT
44000200	DRIVEWAY PAVEMENT REMOVAL	30	SQ YD
44000500	COMBINATION CURB AND GUTTER REMOVAL	130	FT
44000600	SIDEWALK REMOVAL	2,664	SQ FT
56500800	DOMESTIC WATER SERVICE BOXES TO BE ADJUSTED	1	EACH
60604500	COMBINATION CONCRETE CURB AND GUTTER TYPE B-6.18 (AEP)	130	FT
67100100	MOBILIZATION	1	LSUM
X7010216	TRAFFIC CONTROL AND PROTECTION (SPECIAL)	1	LSUM
<del>XX008552</del>	PCC SIDEWALK OFFSET GRINDING	6	EACH
Z0048665	RAILROAD PROTECTIVE LIABILITY INSURANCE	1	LSUM

Jun 13, 2011 10:40am A:\VCP\PM\2010\_City Projects\1010-07\_Side Routes to Schools\Plan\SideRoutes.dwg

<b>CITY OF DECATUR</b> DEPARTMENT OF PUBLIC WORKS	USER NAME =	DESIGNED -- RDD	REVISED --	<b>STATE OF ILLINOIS</b> DEPARTMENT OF TRANSPORTATION	<b>GENERAL NOTES, SUMMARY OF QUANTITIES AND TYPICAL SECTIONS</b>	F.A.P. RTE.	SECTION	COUNTY	TOTAL SHEETS	SHEET NO.
	PLOT SCALE =	CHECKED -- MCN	REVISED			10-00007-00-SW	MACON	4	2	
	PLOT DATE =	DATE --	REVISED --			SAFE ROUTES TO SCHOOLS		CONTRACT NO. 95659		
						ILLINOIS	FED. AID PROJECT: SRTS-4009(098)			

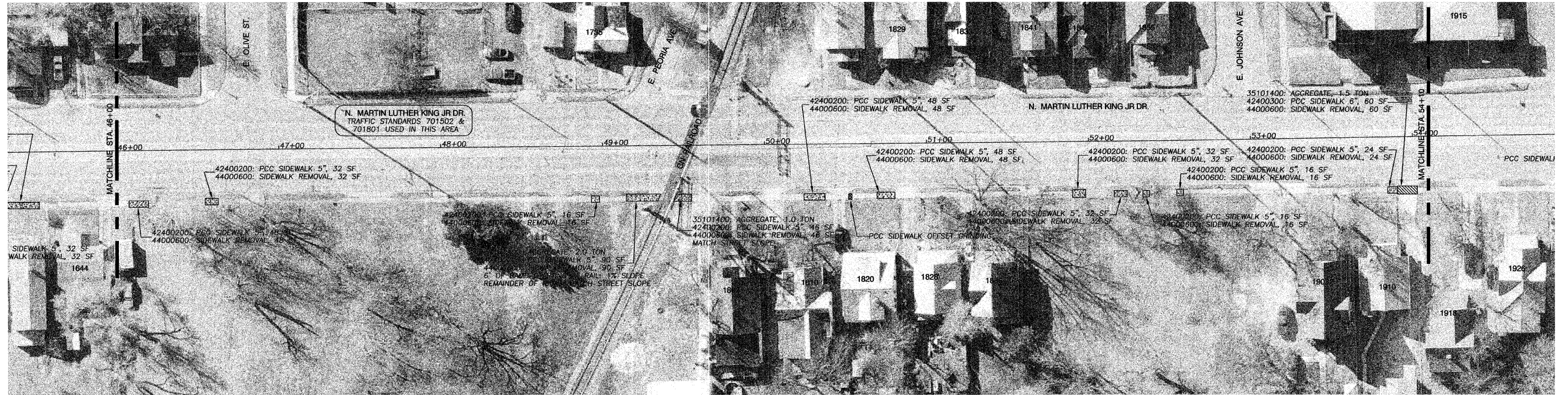
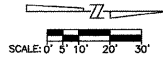


SIDEWALK REMOVAL ONLY    NEW PCC SIDEWALK 5"    NEW PCC SIDEWALK 6"    OFFSET GRINDING

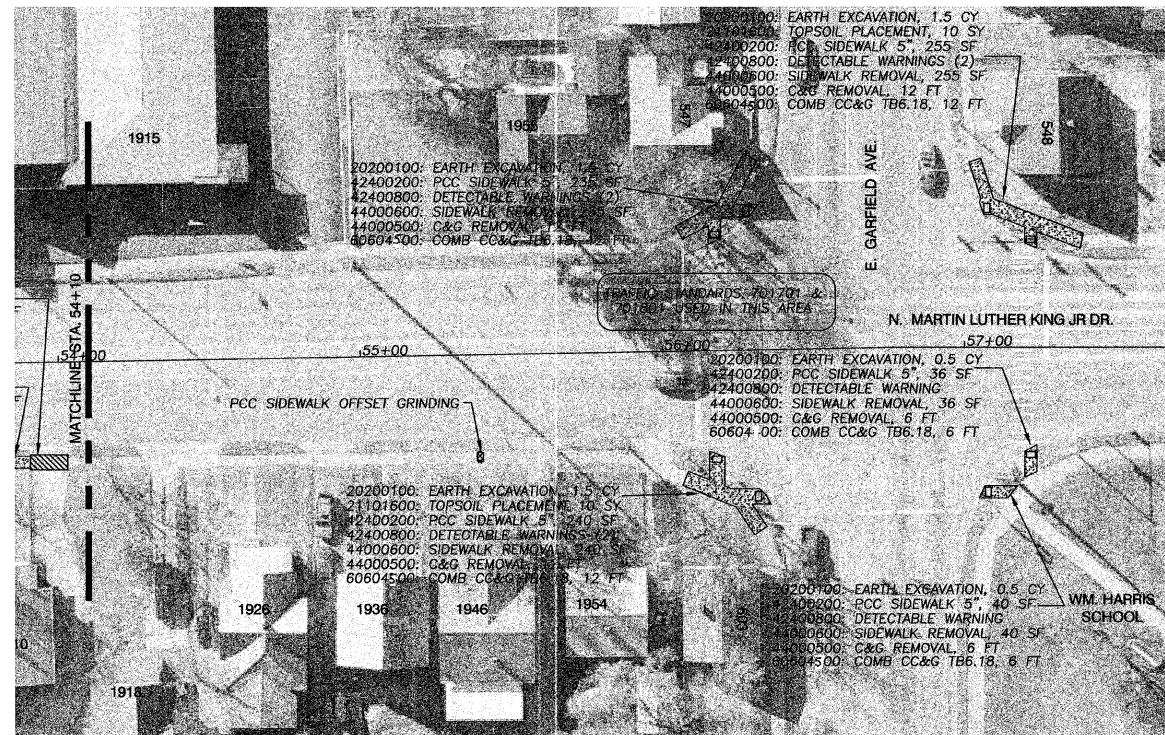


I:\CONTRACTS\2010 City Projects\2010-07 Safe Routes to Schools\Plan\096569.dwg  
 Apr 27, 2011 8:13am

<b>CITY OF DECATUR</b> DEPARTMENT OF PUBLIC WORKS	USER NAME =	DESIGNED — RDD	REVISED —	<b>STATE OF ILLINOIS</b> DEPARTMENT OF TRANSPORTATION	<b>PLAN - N. MARTIN LUTHER KING JR. DRIVE</b> <b>STA. 30+00 TO 46+00</b>	F.A.P. RTE.	SECTION	COUNTY	TOTAL SHEETS	SHEET NO.
	PLOT SCALE =	DRAWN — RDD	REVISED —			10-00007-00-SW	MACON	4	3	
	PLOT DATE =	CHECKED — MCN	REVISED —			SAFE ROUTES TO SCHOOLS	CONTRACT NO. 95659			
		DATE —	REVISED —			ILLINOIS	FED. AID PROJECT: SRTS-4009(098)			
SCALE: 1" = 30'    SHEET NO. 1 OF 2 SHEETS    STA. 30+00    TO STA. 46+00										



SIDEWALK REMOVAL ONLY
 NEW PCC SIDEWALK 5'
 NEW PCC SIDEWALK 6'
 OFFSET GRINDING



Apr 27, 2011 - 8:37am  
 K:\CIP\2010 City Projects\2010-07-01 Side Routes to School\Plan\Sheet46-57.dwg

<b>CITY OF DECATUR</b> DEPARTMENT OF PUBLIC WORKS	USER NAME =	DESIGNED — RDD	REVISED —	<b>STATE OF ILLINOIS</b> <b>DEPARTMENT OF TRANSPORTATION</b>	<b>PLAN - N. MARTIN LUTHER KING JR. DRIVE</b> <b>STA. 46+00 TO 57+00</b>	F.A.P. RTE.	SECTION	COUNTY	TOTAL SHEETS	SHEET NO.
	PLOT SCALE =	DRAWN — RDD	REVISED —			10-00007-00-SW	MACON	4	4	
	PLOT DATE =	CHECKED — MCN	REVISED —			SAFE ROUTES TO SCHOOLS	CONTRACT NO. 95659			
		DATE —	REVISED —			ILLINOIS   FED. AID PROJECT: SRTS-4009(098)				

SCALE: 1" = 30'    SHEET NO. 2 OF 2 SHEETS    STA. 46+00    TO STA. 57+00