

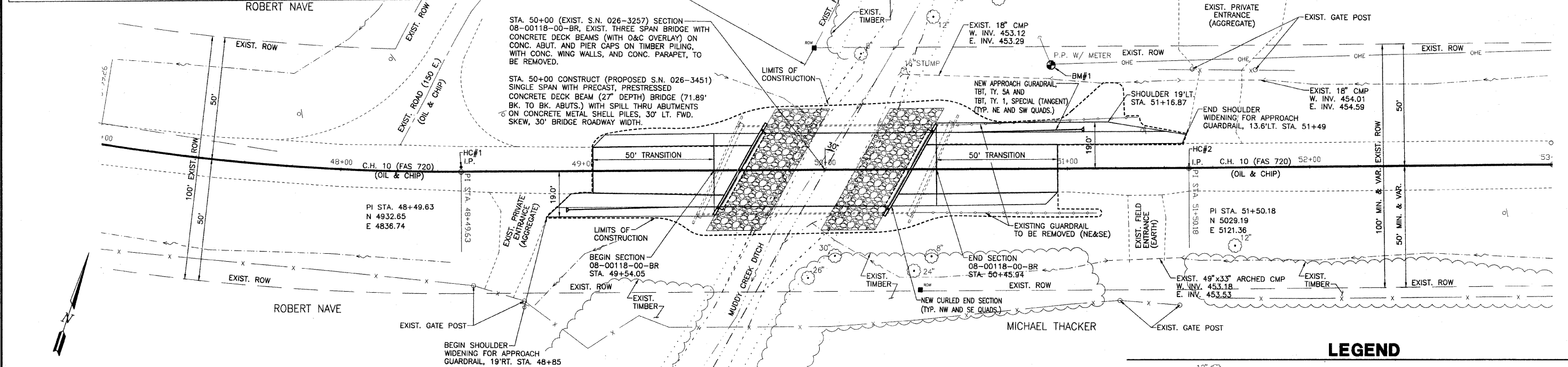
HORIZONTAL CONTROL COORDINATES

POINT	LOCATION	N. COOR.	E. COOR.
HC#1 (IRON PIN)	1.87' LT., STA. 48+49.63	4934.42	4836.14
HC#2 (IRON PIN)	CL, STA. 51+50.18	5029.19	5121.36

BENCH MARK COORDINATES

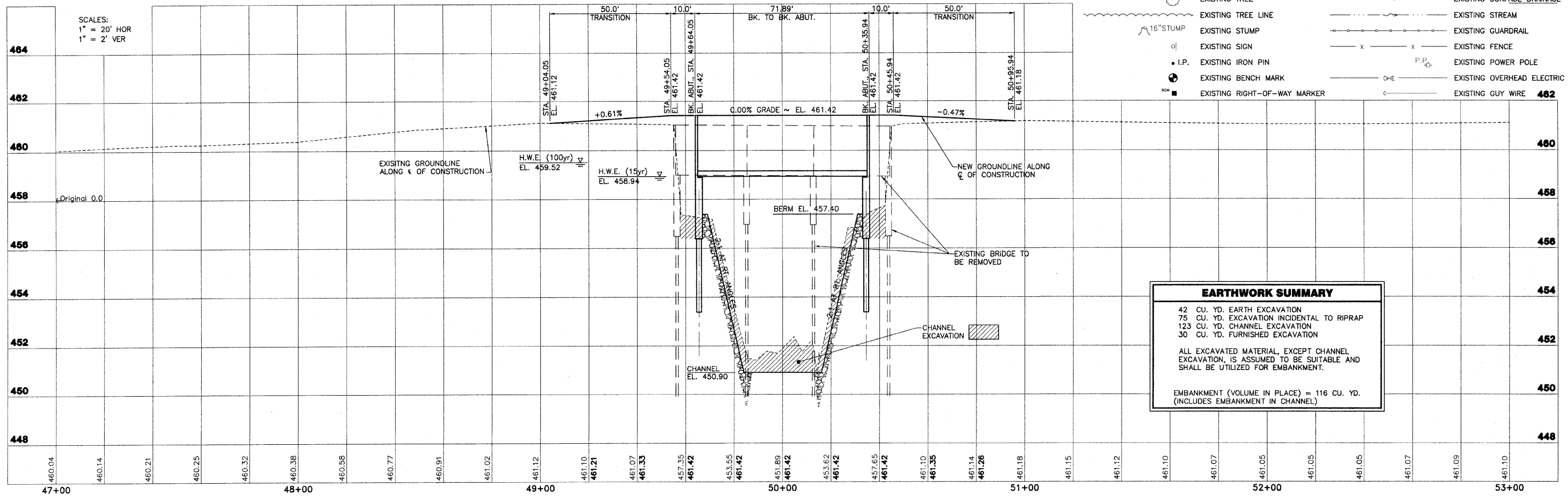
POINT	LOCATION	ELEV.
BM#1 (R.R. SPIKE IN POWER POLE)	42.33' LT., STA. 50+93.42	457.80

SCOTT VONBURG



LEGEND

- 12" (Symbol) EXISTING TREE
- (Symbol) EXISTING TREE LINE
- 16" STUMP (Symbol) EXISTING STUMP
- (Symbol) EXISTING SIGN
- (Symbol) EXISTING IRON PIN
- (Symbol) EXISTING BENCH MARK
- (Symbol) EXISTING RIGHT-OF-WAY MARKER
- (Symbol) EXISTING SURFACE DRAINAGE
- (Symbol) EXISTING STREAM
- (Symbol) EXISTING GUARDRAIL
- (Symbol) EXISTING FENCE
- (Symbol) EXISTING POWER POLE
- (Symbol) EXISTING OVERHEAD ELECTRIC LINE
- (Symbol) EXISTING GUY WIRE



EARTHWORK SUMMARY

42 CU. YD. EARTH EXCAVATION	
75 CU. YD. EXCAVATION INCIDENTAL TO RIPRAP	
123 CU. YD. CHANNEL EXCAVATION	
30 CU. YD. FURNISHED EXCAVATION	
ALL EXCAVATED MATERIAL, EXCEPT CHANNEL EXCAVATION, IS ASSUMED TO BE SUITABLE AND SHALL BE UTILIZED FOR EMBANKMENT.	
EMBANKMENT (VOLUME IN PLACE) = 116 CU. YD. (INCLUDES EMBANKMENT IN CHANNEL)	

RHUTASEL and ASSOCIATES, INC.
CONSULTING ENGINEERS • LAND SURVEYORS
CENTRALIA, ILLINOIS FREEBURG, ILLINOIS

PREPARED FOR:
AECOM
50097894

F.A.S. 720 (C.H. 10)
SECTION 08-00118-00-BR
FAYETTE COUNTY, ILLINOIS

PLAN AND PROFILE
STA. 47+00 TO STA. 53+00

SURVEY	JAS	CHECKED	DATE
DESIGN	MRQ	APPROVED	05/18/11
DRAWN	JMW	JOB NO.	51410