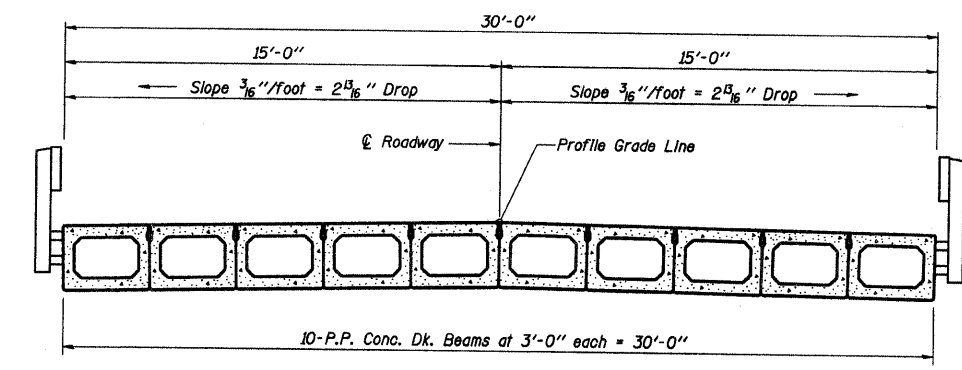
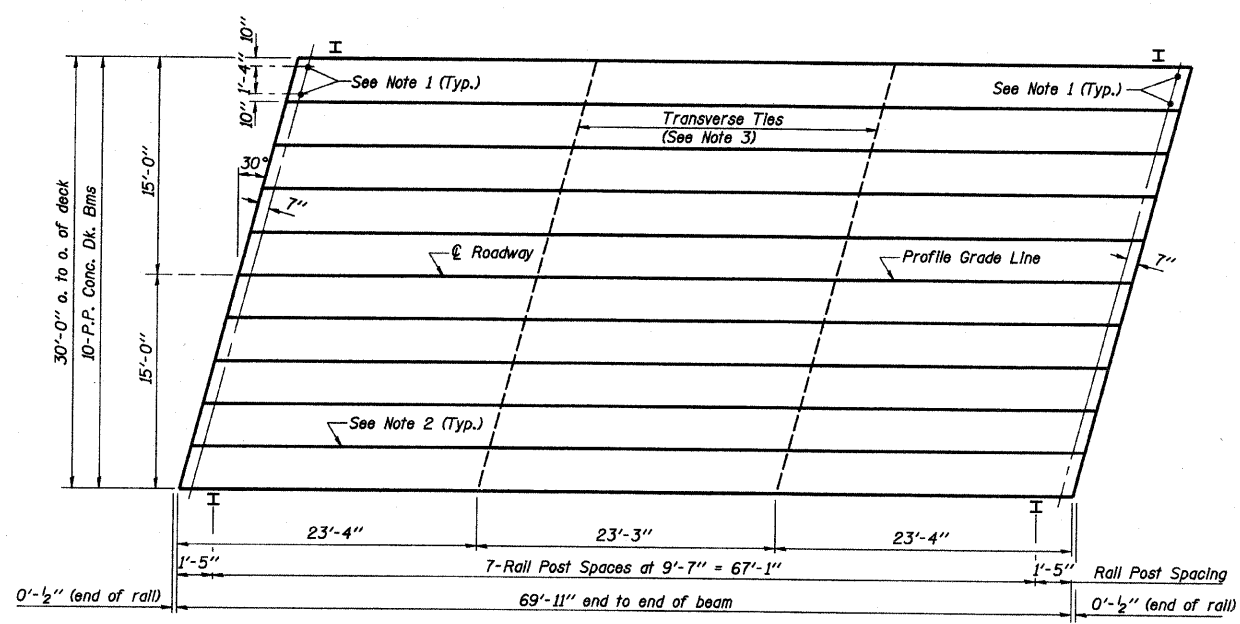


TYPICAL ELEVATION

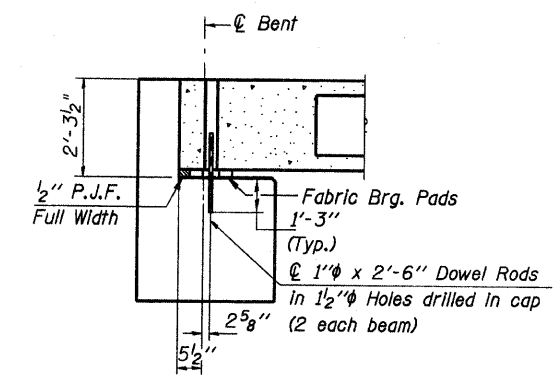


CROSS SECTION



PLAN

Provide Curled End Sections at the departure ends of the Structure (NW & SE) See Notes.



SECTION AT ABUTS.
(Along \varnothing Beams)

QUANTITIES FOR ONE SPAN

P.P. Conc. Dk. Bm. 27" Dp.	2100 Sq. Ft.
Steel Railing, Type S1	140 Ft.

NOTES

- After beams have been erected, holes shall be drilled into substructure and anchor dowels placed. Dowel holes shall be filled with non-shrink grout to top of beam and allowed to cure min. 24 hrs. prior to grouting the shear keys.
- Longitudinal keys shall be grouted.
- The 1" \varnothing rods in the transverse tie assembly shall be tightened to a snug fit and the threads set. Pockets that receive transverse tie bar outside shall be filled with grout after transverse tie assembly is in place.
- The cost of the Curled End Sections shall be included in the contract unit price per foot for "STEEL RAILING, TYPE S1", and no additional compensation will be allowed.