

STATE OF ILLINOIS
DEPARTMENT OF TRANSPORTATION
DIVISION OF HIGHWAYS

**PROPOSED
HIGHWAY PLANS**

CITY OF COLUMBIA
MAIN STREET STREETScape
FAU ROUTE 9302
SECTION 06-00045-00-SW
PROJECT TE-00D8(135)
JOB NO. C-98-337-09
MONROE COUNTY

F.A.U. RTE.	SECTION	COUNTY	TOTAL SHEETS	SHEET NO.
9302	06-00045-00-PV	MONROE	24	1
COLUMBIA		ILLINOIS	CONTRACT NO. 97468	

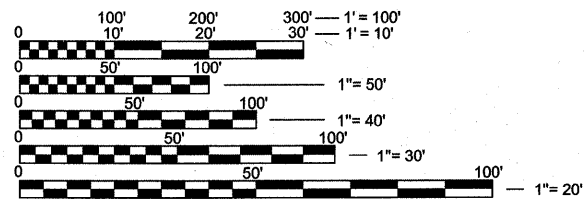
FEDERAL AID PROJECT

INDEX OF SHEETS

SHEET NO.	ITEM
1	COVER SHEET
2	GENERAL NOTES
3	SUMMARY OF QUANTITIES/SCHEDULES
4	SCHEDULES
5	EXISTING TYPICAL SECTIONS
6	PROPOSED TYPICAL SECTIONS
7	PLAN
8	PAVEMENT MARKING, PLANTING, AND SIGNAGE PLAN
9	RIGHT OF WAY PLANS
10-11	GRADING DETAILS
12-17	DETAILS
18	STREETSCAPE LIGHTING PLAN
19	ELECTRICAL SCHEDULES & DETAILS
20	ELECTRICAL DETAILS
21-24	CROSS SECTIONS

STANDARDS

000001-06	STANDARD SYMBOLS ABBREVIATIONS AND PATTERNS
280001-05	TEMPORARY EROSION CONTROL SYSTEMS
353001-04	PCC BASE COURSE WITH HMA BINDER AND SURFACE COURSES
420001-07	PAVEMENT JOINTS
424001-05	CURB RAMPS FOR SIDEWALK
606001-04	CONCRETE CURB TYPE B AND COMBINATION CONCRETE CURB AND GUTTER
701001-02	OFF-ROAD OPERATIONS, 2L, 2W, MORE THAN 15' AWAY
701006-03	OFF-ROAD OPERATIONS, 2L, 2W, 15' TO 24" FROM PAVEMENT EDGE
701301-04	LANE CLOSURE, 2L, 2W, SHORT TIME OPERATIONS
701501-06	URBAN LANE CLOSURE, 2L, 2W, UNDIVIDED
701801-04	LANE CLOSURE MULTILANE 1W OR 2W CROSSWALK OR SIDEWALK CLOSURE
701901-01	TRAFFIC CONTROL DEVICES
720001-01	SIGN PANEL MOUNT DETAILS
720006-02	SIGN PANEL ERECTION DETAILS
720011-01	METAL POSTS FOR SIGNS, MARKERS, AND DELINEATORS (FOR SIGNS AND MARKERS)
728001-01	TELESCOPING STEEL SIGN SUPPORT
729001-01	APPLICATIONS OF TYPES A & B METAL POSTS (FOR SIGNS & MARKERS)
780001-02	TYPICAL PAVEMENT MARKINGS
836001	LIGHT POLE FOUNDATION
BLR 10-6	PCC PAVEMENT SPECIAL (NONREINFORCED)
BLR 17-4	TRAFFIC CONTROL DEVICES - DAY LABOR CONSTRUCTION

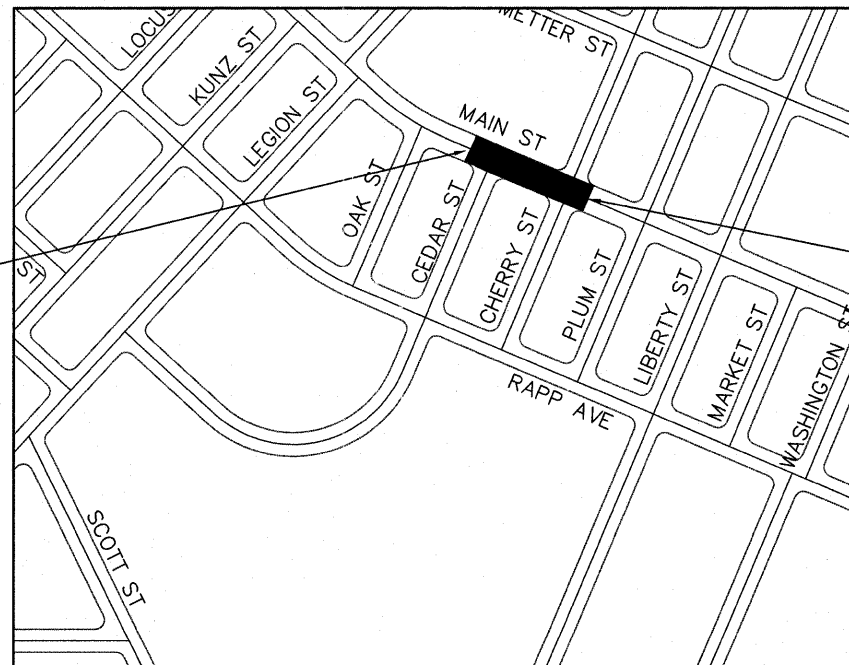


FULL SIZE PLANS HAVE BEEN PREPARED USING STANDARD ENGINEERING SCALES. REDUCED SIZED PLANS WILL NOT CONFORM TO STANDARD SCALES. IN MAKING MEASUREMENTS ON REDUCED PLANS, THE ABOVE SCALES MAY BE USED.

J.U.L.I.E.
JOINT UTILITY LOCATION INFORMATION FOR EXCAVATION
1-800-892-0123
OR 811

FUNCTIONAL CLASSIFICATION: URBAN ARTERIAL
ADT: 10,200

PRINTED BY AUTHORITY OF THE STATE OF ILLINOIS



LOCATION MAP

SCALE: 1" = 200'

LENGTH OF PROJECT = 277 FEET (0.053 MILES)

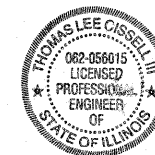


STATE OF ILLINOIS
DEPARTMENT OF TRANSPORTATION

APPROVED May 10, 2011 (Date)
Kevin Sullivan, Mayor (Signature)
Local Agency, Position

PASSED 6-6-11 (Date)
Paul M. C.M. (Signature)
DISTRICT 8 PROJECT IMPLEMENTATION ENGINEER

RELEASING FOR BID
BASED ON LIMITED
REVIEW 6-6-11 (Date)
Mary C. Lewis (Signature)
Deputy Director of Highways, Region # 5 Engineer



THOMAS LEE CISSELL III
IL PE NO.: 062-056015
DATE: 5/13/11



LICENSE EXPIRES: 11/30/11