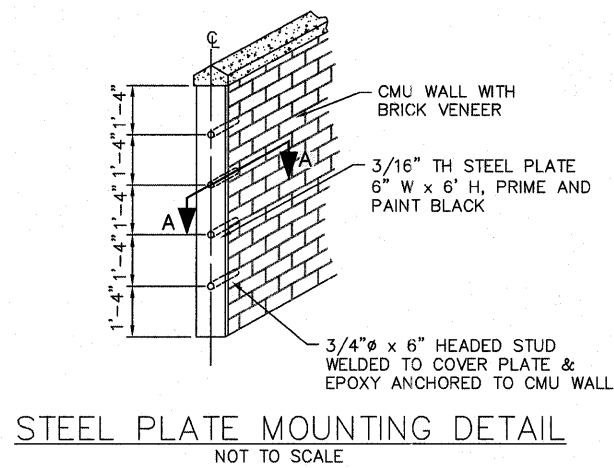
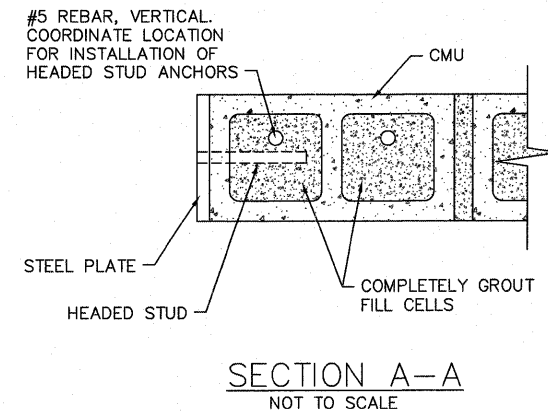


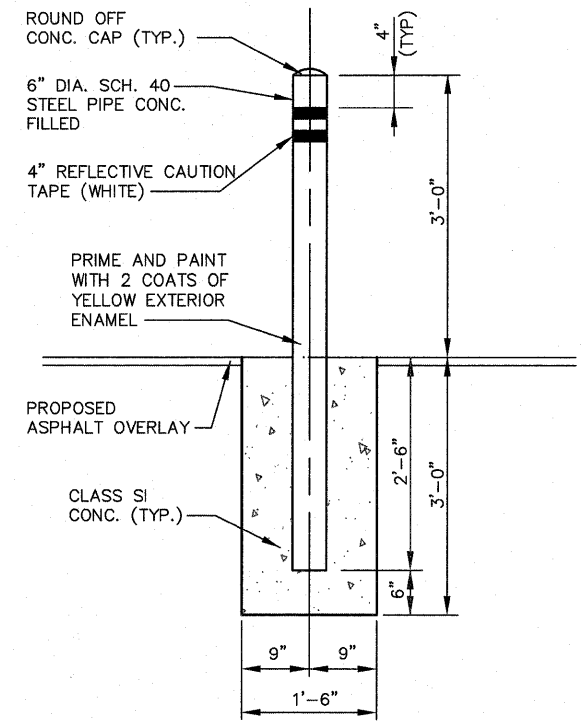
MAINTENANCE ENCLOSURE DOOR DETAIL
NOT TO SCALE



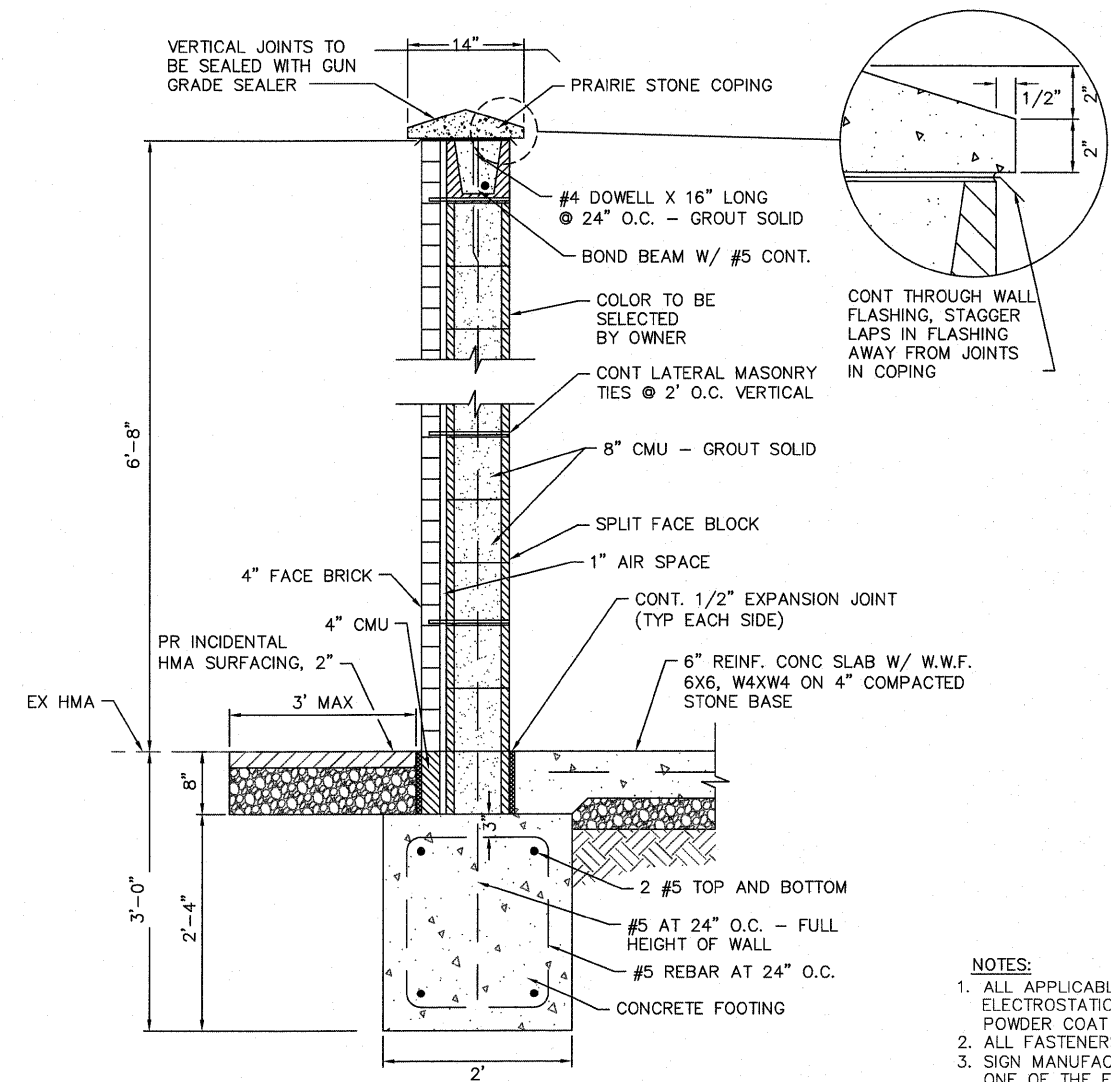
STEEL PLATE MOUNTING DETAIL
NOT TO SCALE



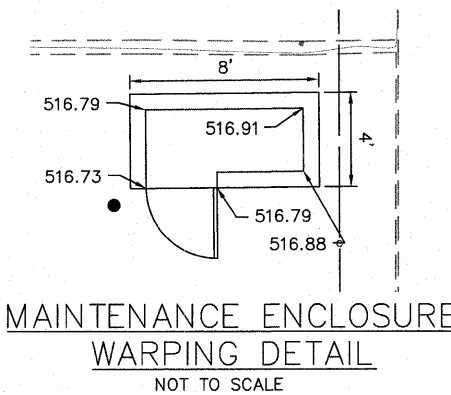
SECTION A-A
NOT TO SCALE



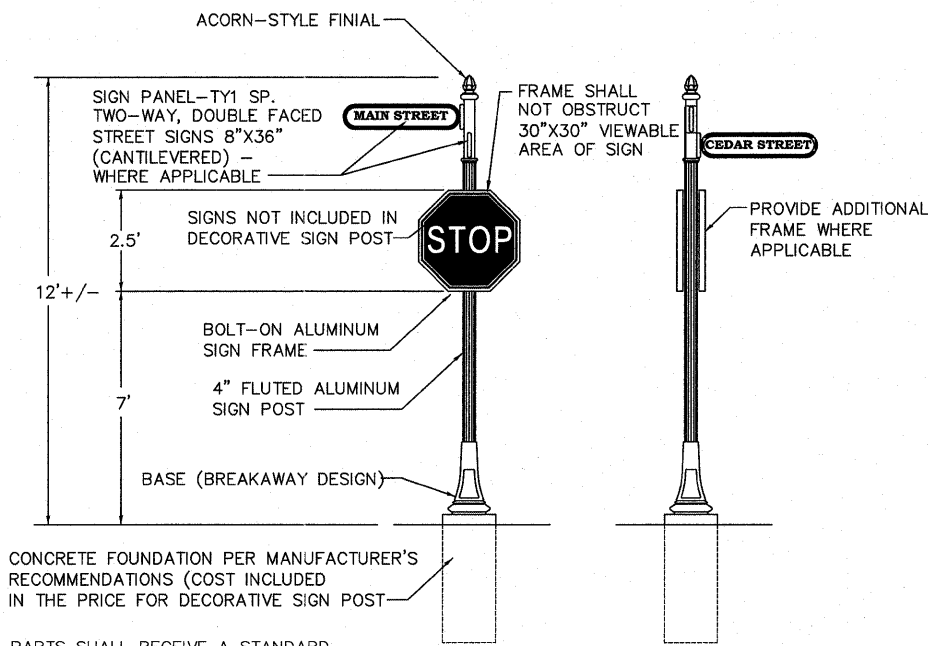
PIPE BOLLARD DETAIL
NOT TO SCALE



MAINTENANCE ENCLOSURE WALL DETAIL
NOT TO SCALE



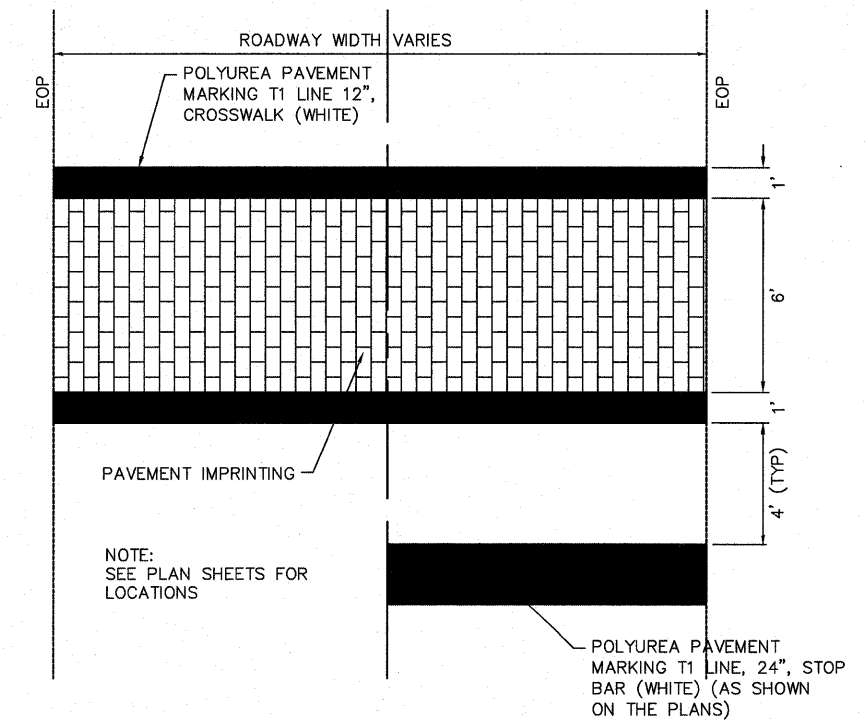
MAINTENANCE ENCLOSURE WARPING DETAIL
NOT TO SCALE



FRONT VIEW **SIDE VIEW**
NOT TO SCALE

DECORATIVE SIGN POST
NOT TO SCALE

- NOTES:**
1. ALL APPLICABLE PARTS SHALL RECEIVE A STANDARD ELECTROSTATICALLY APPLIED THERMOSET POLYESTER POWDER COAT SMOOTH SEMI-GLOSS BLACK FINISH.
 2. ALL FASTENERS SHALL BE STAINLESS STEEL.
 3. SIGN MANUFACTURER AND TYPE SHALL BE ONE OF THE FOLLOWING:
HOLOPHANE INDUSTRIES,
THE STREETSCAPE COMPANY, LLC,
BRANDON INDUSTRIES,
STERNBERG LIGHTING
 4. BASE AND POST SHOULD MATCH LIGHT FIXTURE STYLE TO THE SATISFACTION OF THE ENGINEER.



PAVEMENT IMPRINTING/CROSSWALK DETAIL
NOT TO SCALE

FILE NAME = H:\P\25040\DWG\PHASE 1\25040- DESIGN.DWG	USER NAME = ASHLEIGH ENGELMANN	DESIGNED - SLW	REVISED -	STATE OF ILLINOIS DEPARTMENT OF TRANSPORTATION	DETAILS	F.A.U. RTE. 9302	SECTION 06-00045-00-SW	COUNTY MONROE	TOTAL SHEETS 24	SHEET NO. 12	
PLOT SCALE = 4 1/4" = 1'	CHECKED - TLC	REVISED -	SCALE:			SHEET NO. 1 OF 6 SHEETS	STA. 22+29.00 TO STA. 25+06.39	CONTRACT NO. 97468			
PLOT DATE = 2011-05-10	DATE = 2010-06-11	REVISED -	COLUMBIA			ILLINOIS	FED. AID PROJECT				