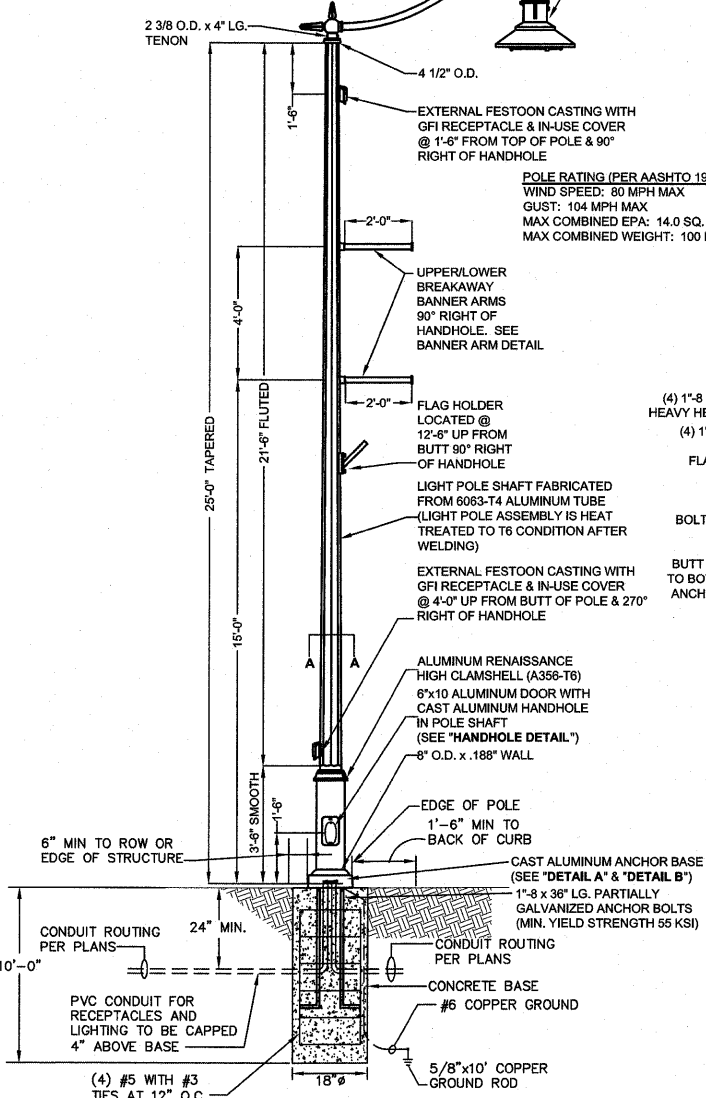


NOTE: PROVIDE #10 CONDUCTORS MIN. FOR LIGHTING AND RECEPTACLE CIRCUITS ROUTED WITHIN POLE/ARM. SPLICE IN HANDHOLE WITH LIGHTING AND POWER CONDUCTORS SIZED AS INDICATED ON PLAN.

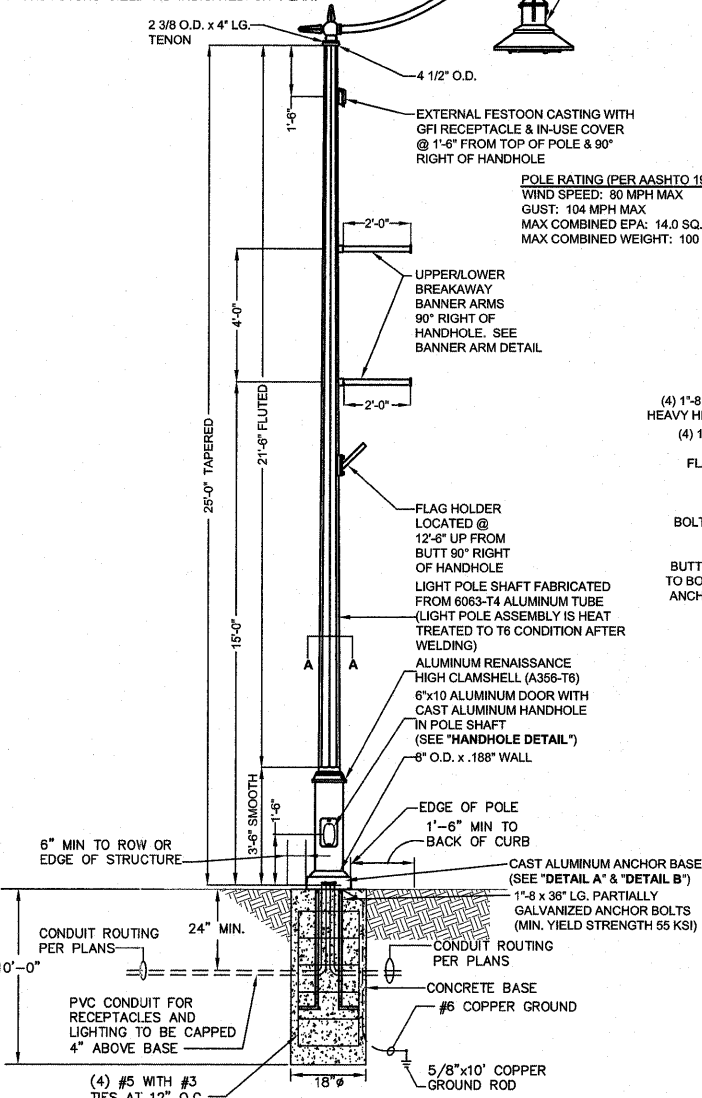


FIXTURE TYPE SA POLE DETAIL

NOT TO SCALE PAY CODES: DECOR LT/POLE TYPE - SA AND LIGHT POLE FDN, SPL(FT)

NOTE: ALL METAL PRODUCTS SHALL BE MANUFACTURED OR PRODUCED AND FABRICATED IN THE UNITED STATES OF AMERICA. THE APPLICATION OF ALL COATINGS, EPOXY, GALVANIZING, PAINTING, ETC., TO METAL PRODUCTS SHALL BE APPLIED IN THE UNITED STATES OF AMERICA.

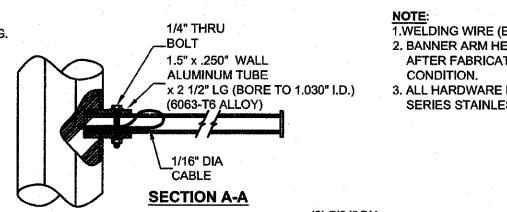
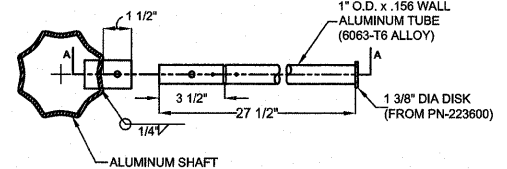
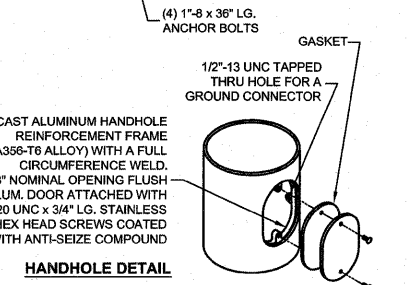
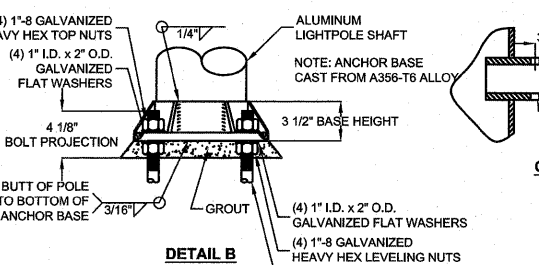
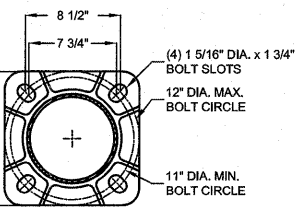
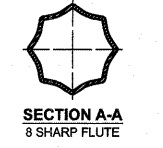
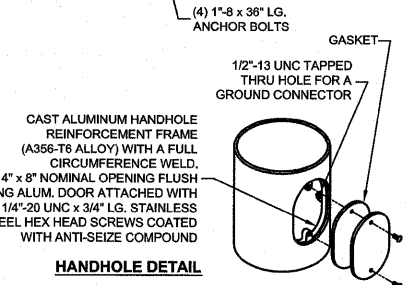
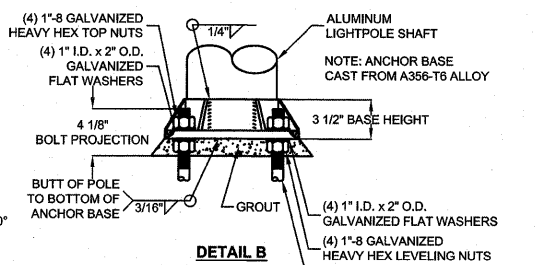
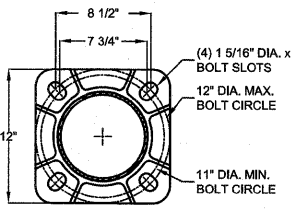
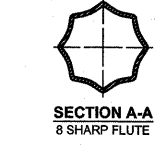
NOTE: PROVIDE #10 CONDUCTORS MIN. FOR LIGHTING AND RECEPTACLE CIRCUITS ROUTED WITHIN POLE/ARM. SPLICE IN HANDHOLE WITH LIGHTING AND POWER CONDUCTORS SIZED AS INDICATED ON PLAN.



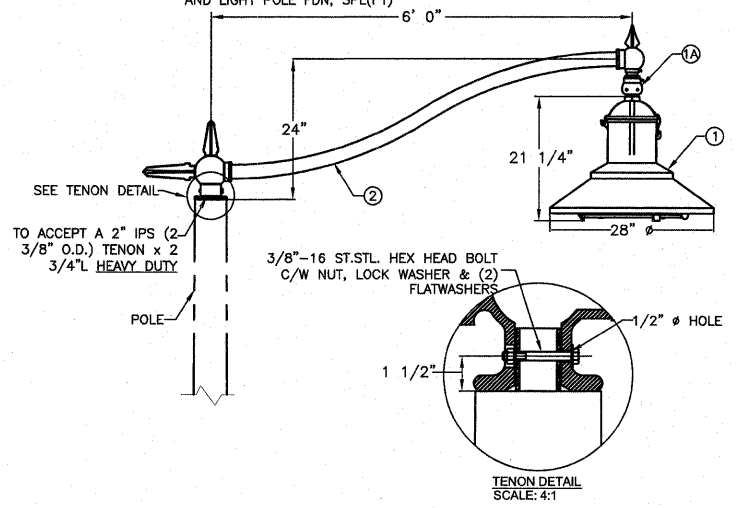
FIXTURE TYPE SB POLE DETAIL

NOT TO SCALE PAY CODES: DECOR LT/POLE TYPE - SB AND LIGHT POLE FDN, SPL(FT)

NOTE: ALL METAL PRODUCTS SHALL BE MANUFACTURED OR PRODUCED AND FABRICATED IN THE UNITED STATES OF AMERICA. THE APPLICATION OF ALL COATINGS, EPOXY, GALVANIZING, PAINTING, ETC., TO METAL PRODUCTS SHALL BE APPLIED IN THE UNITED STATES OF AMERICA.



NOTE:
1. WELDING WIRE (ER4043).
2. BANNER ARM HEAT TREATED AFTER FABRICATION TO T6 CONDITION.
3. ALL HARDWARE IS 300 SERIES STAINLESS STEEL.

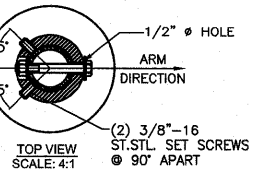


FIXTURE TYPE SA AND SB FIXTURE DETAIL

NOT TO SCALE

LUMINAIRE SPECIFICATIONS
 CATALOGUE NO.: KING LUMINAIRE K823-HGLII-III-250(MOG)
 TYPE: MH-240V(MT)-KPL10
 OPTICAL SYSTEM: FAL CONROIDE SR
 HYDROFORMED GLASS FLAT LENS
 TYPE III
 WATTAGE: 250W
 LIGHT SOURCE: METAL HALIDE
 LINE VOLTAGE: 240V (MULTI-TAP)
 PAINT: BLACK
 OPTIONS: (1) KPL-10 LEVELING DEVICE (PAINT: BLACK)

ARM SPECIFICATIONS
 CATALOGUE NO.: KING LUMINAIRE KA32-T-1-F
 TYPE: PIPE ARM
 MATL: ALUMINUM
 PAINT: BLACK



FILE NAME = M:\624-25\CAD\ELECTRICALE\SHEETS.DWG	USER NAME = JEFF NOLTE	DESIGNED - JEN	REVISED -
	PLOT SCALE = 4.41/64" = 1"	DRAWN - JEN	REVISED -
	PLOT DATE = 2011-06-17	CHECKED - BEC	REVISED -
		DATE - 2011-05-13	REVISED -

STATE OF ILLINOIS
DEPARTMENT OF TRANSPORTATION

ELECTRICAL DETAILS

SCALE: AS NOTED SHEET NO. 3 OF 3 SHEETS STA. TO STA.

F.A.U. RTE. 9302	SECTION 06-00045-00-SW	COUNTY MONROE	TOTAL SHEETS 24	SHEET NO. 20
CONTRACT NO. 97468				
COLUMBIA ILLINOIS FEDERAL AID PROJECT				