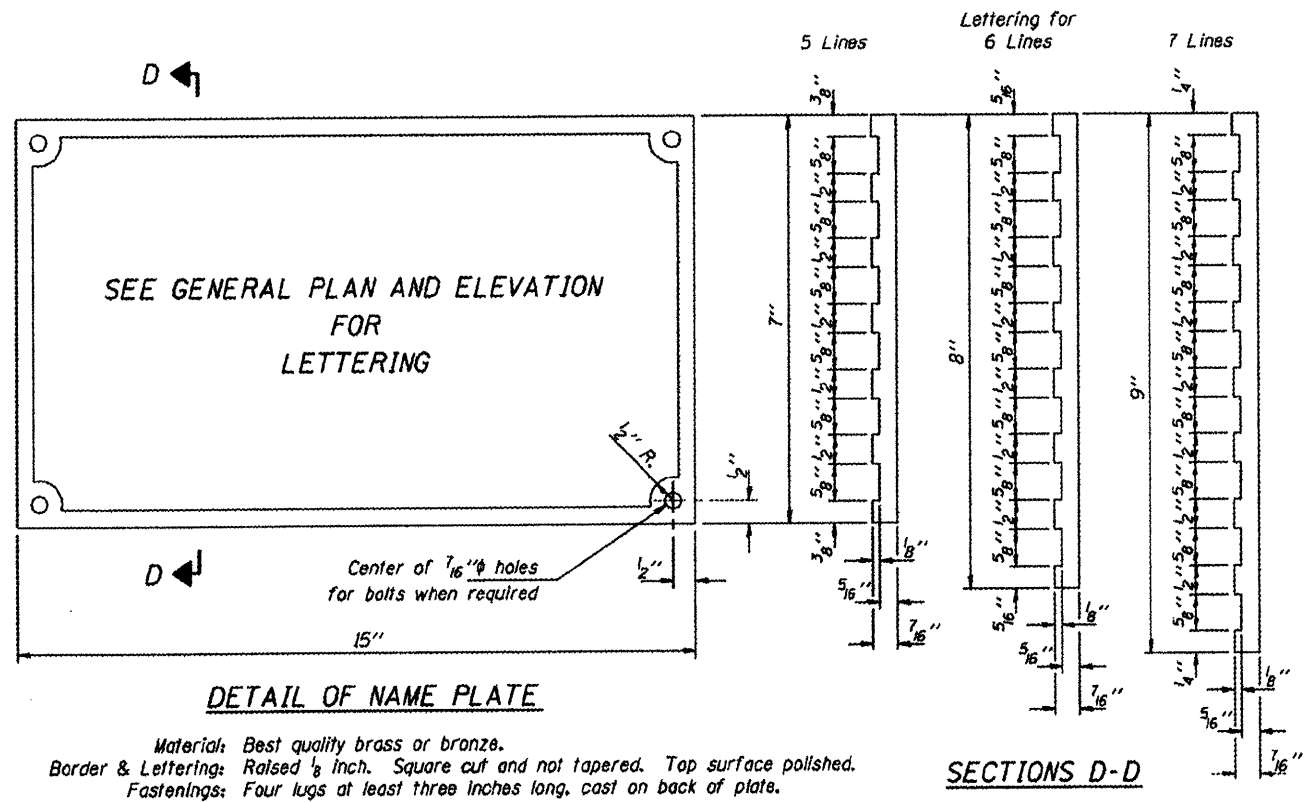
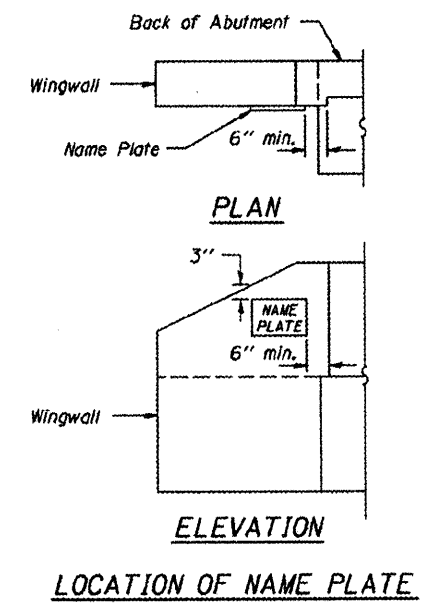


ROUTE	SECTION	COUNTY	TOTAL SHEETS	SHEET NO.
TR 23	09-01181-00-BR	PULASKI	13	11
PROJECT NO. BROS-153(31)			CONTRACT NO. 99421	



Material: Best quality brass or bronze.
 Border & Lettering: Raised $\frac{1}{8}$ inch. Square cut and not tapered. Top surface polished.
 Fastenings: Four lugs at least three inches long, cast on back of plate.



NAME PLATES
 TOWNSHIP ROUTE 23 (ELCO ROAD)
 INDIAN CAMP CREEK
 SECTION 09-01181-00-BR
 PULASKI COUNTY
 STRUCTURE NO. 077-3141