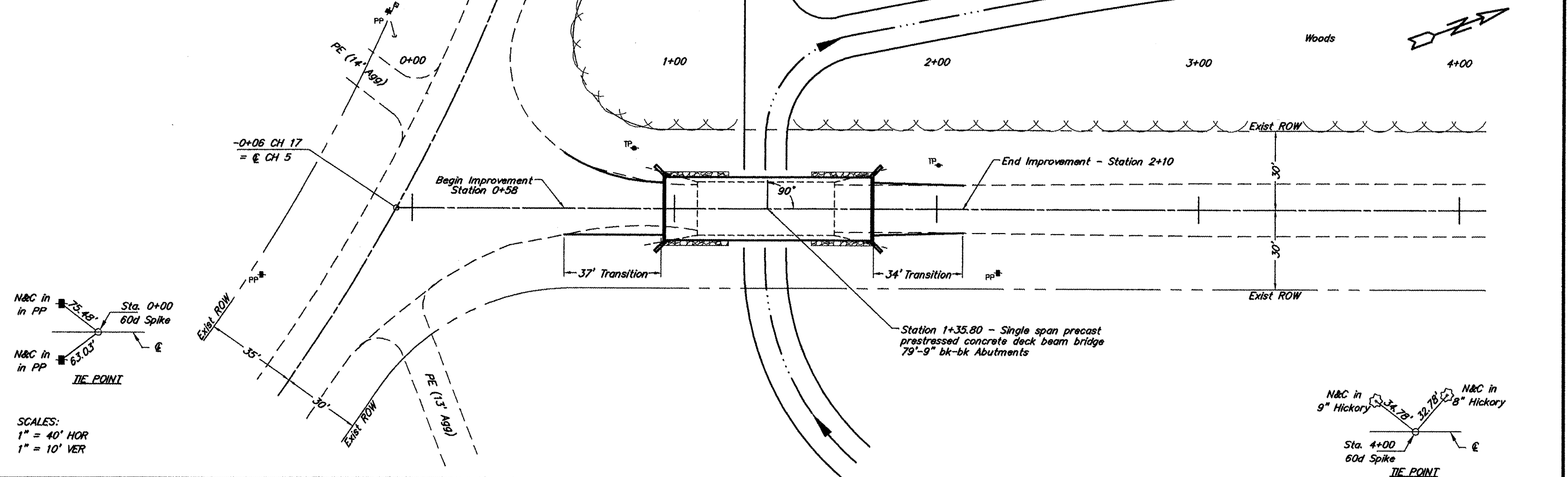


B.M. - RR Spike in PP
 24' Rt. Sta. 2+24
 Elev. 358.00
 Existing Structure - Timber deck on
 steel stringers. 20.2' W x 52.2' L.

ROUTE	SECTION	COUNTY	TOTAL SHEETS	SHEET NO.
CH 17	06-00142-00-BR	SALINE	10	2
PROJECT NO. BROS-165(28)			CONTRACT NO. 99449	



SCALES:
 1" = 40' HOR
 1" = 10' VER

