

## GENERAL NOTES

ALL BORROW/WASTE/USE SITES MUST BE APPROVED BY THE DEPARTMENT PRIOR TO REMOVING ANY MATERIAL FROM THE PROJECT OR INITIATING ANY EARTHMOVING ACTIVITIES, INCLUDING TEMPORARY STOCKPILING OUTSIDE THE LIMITS OF CONSTRUCTION.

THE CONTRACTOR SHALL SUBMIT A SEQUENCE OF CONSTRUCTION OPERATIONS TO THE RESIDENT ENGINEER FOR APPROVAL BEFORE THIS PROJECT IS STARTED.

THE CONTRACTOR SHALL BE RESPONSIBLE FOR PROTECTING UTILITY PROPERTY DURING CONSTRUCTION OPERATIONS AS OUTLINED IN ARTICLE 107.31 OF THE STANDARD SPECIFICATIONS. A MINIMUM OF 48 HOURS ADVANCE NOTICE IS REQUIRED FOR NON-EMERGENCY WORK. THE JULIE NUMBER IS 800-892-0123.

NO STREAM PERMITS HAVE BEEN PROCURED FOR THIS PROJECT. NONE ARE REQUIRED FROM THE REGULATORY AGENCIES IF THERE IS NO DEBRIS FALLING OR BEING PLACED INTO THE STREAM. ANY TEMPORARY FILL IN THE STREAM OR THE COMPROMISING OF THE DIKE (IF APPLICABLE) WILL NOT BE ALLOWED. IF THE CONTRACTOR CHOOSES TO USE ALTERNATE/MODIFIED CONSTRUCTION METHOD(S), THEY WILL BE RESPONSIBLE FOR OBTAINING THE PROPER PERMITS. NO RELIEF OR COMPENSATION WILL BE GIVEN FOR ANY DELAYS, WORKING DAYS CHARGED OR CALENDAR DAYS EXPIRED DUE TO THE LOSS OF TIME OR DELAY DURING THE RE-SUBMITTAL PROCESS TO PROCURE THE NECESSARY PERMIT(S) DUE TO THE CONTRACTOR CHOOSING ALTERNATE/MODIFIED CONSTRUCTION METHOD(S). ABSOLUTELY NO CONSTRUCTION ACTIVITIES WILL TAKE PLACE WITHOUT THE PROPER PERMITS BEING SECURED.

ALL ELEVATIONS SHOWN IN PLANS ARE BASED ON NORTH AMERICAN VERTICAL DATUM OF 1988 (NAVD 88).

IDOT DISTRICT 2 OPERATIONS TRAFFIC SIGNAL SECTION SHALL BE CONTACTED AT 815-284-2271 FOR CONTROLLER PROGRAMMING AND TIMING APPROVAL PRIOR TO ACTIVATING THE TEMPORARY BRIDGE TRAFFIC SIGNALS.

THERE ARE NO COMMITMENTS ASSOCIATED WITH THIS PROJECT.

THE QUANTITIES INCLUDED IN THE PLANS FOR HOT-MIX ASPHALT RESURFACING ARE INTENDED TO GIVE THE COVERAGE SHOWN ON THE TYPICAL CROSS SECTIONS. IT IS NOT INTENDED TO INCREASE THE THICKNESS OF THE HOT-MIX ASPHALT MIXTURE IN ORDER TO USE ALL OF THE QUANTITIES INCLUDED IN THE CONTRACT.

ALL SAW CUTS NECESSARY TO COMPLETE THE WORK DETAILED IN THESE PLANS SHALL BE INCLUDED IN THE COST FOR THE VARIOUS PAY ITEMS INVOLVED.

THE FOLLOWING MIXTURE REQUIREMENTS ARE APPLICABLE FOR THIS PROJECT:

MIXTURE USE(S):	HMA CONC SURF CSE
PG:	PG 64 -22
DESIGN AIR VOIDS:	4.0% @ N DESIGN - 50
MIXTURE COMPOSITION:	IL 9.5
FRICTION AGGREGATE:	MIX "C"
QUALITY MANAGEMENT PROGRAM:	QC / QA
SUBLOT SIZE:	N / A

THE FOLLOWING RATES OF APPLICATION HAVE BEEN USED TO CALCULATE PLAN QUANTITIES:  
 BITUMINOUS MATERIALS (TACK COAT) 0.05 LBS / SQ FT (ON PAVEMENT)  
 BITUMINOUS MATERIALS (TACK COAT) 0.025 LBS / SQ FT (FOG)  
 HOT-MIX ASPHALT MATERIAL 0.056 TON / SQ YD PER 1"  
 AGGREGATE MATERIAL 1.60 TONS / CU YD

PAVEMENT MARKING SHALL BE DONE ACCORDING TO STANDARD 780001, EXCEPT AS FOLLOWS:

- ALL WORDS, SUCH AS ONLY, SHALL BE 8 FEET HIGH.
- ALL NON-FREEWAY ARROWS SHALL BE THE LARGE SIZE.
- THE DISTANCE BETWEEN YELLOW NO-PASSING LINES SHALL BE 8 INCHES, NOT 7 INCHES, AS SHOWN IN THE DETAIL OF TYPICAL LANE AND EDGE LINES.
- CENTERLINE SKIP DASH PAVEMENT MARKING ON MULTI-LANE DIVIDED, MULTI-LANE UNDIVIDED, AND ONE-WAY ROADWAY SHALL BE ACCORDING TO DISTRICT STANDARD 41.1.

UNLESS DIRECTED BY THE ENGINEER, PAVEMENT MARKING LINES SHALL NOT BE LAID DIRECTLY OVER A LONGITUDINAL CRACK OR JOINT NOR OVER A TAR OR ASPHALT PAINTED LINE.

- THE EDGE OF A CENTERLINE OR LANE LINE SHALL BE OFFSET A MINIMUM DISTANCE OF 2" FROM A LONGITUDINAL CRACK OR JOINT.
- EDGE LINES SHALL BE APPROXIMATELY 2" FROM THE EDGE LINE OF PAVEMENT. SEE SECTION 780 OF THE STANDARD SPECIFICATIONS FOR TRAFFIC CONTROL ITEMS.

AREAS OF DECK REPAIRS SHOWN ARE ESTIMATED. THE ENGINEER SHALL SHOW ACTUAL LOCATIONS OF DECK REPAIRS ON AS-BUILT PLANS.

MICROSILICA CONCRETE SHALL INCLUDE MACRO-SIZE, TYPE III, SYNTHETIC FIBERS MEETING THE 'BRIDGE DECK MICROSILICA CONCRETE OVERLAY' SPECIAL PROVISION.

## INDEX OF SHEETS

1	COVER SHEET
2	INDEX OF SHEETS, STATE STANDARDS & GENERAL NOTES
3 - 5	SUMMARY OF QUANTITIES
6 - 7	TRAFFIC CONTROL PLAN
8	SHOULDER & GUARDRAIL PLAN
9	GENERAL PLAN & ELEVATION SN 089-0066
10	CROSS SECTION SN 089-0066
11	WEARING SURFACE PLAN SN 089-0066
12	DECK SLAB AND APPROACH SLAB REPAIR SN 089-0066
13	TEMPORARY CONCRETE BARRIER FOR STATE CONSTRUCTION
14 - 17	WORK ZONE SIGN DETAILS (DISTRICT STD 34.1)
18 - 20	TYPICAL PAVEMENT MARKINGS (DISTRICT STD 41.1)
21	GUARDRAIL REFLECTORS, TYPE C (SPECIAL) (DISTRICT STD 55.1)

## STATE STANDARDS

000001-08	STANDARD SYMBOLS, ABBREVIATIONS AND PATTERNS
001006	DECIMAL OF AN INCH AND OF A FOOT
606001-08	CONCRETE CURB TYPE B AND COMBINATION CONCRETE CURB AND GUTTER
630001-12	STEEL PLATE BEAM GUARDRAIL
630301-09	SHOULDER WIDENING FOR TYPE 1 (SPECIAL) GUARDRAIL TERMINALS
631031-17	TRAFFIC BARRIER TERMINAL, TYPE 6
642006-01	SHOULDER RUMBLE STRIPS, 8 IN.
701001-02	OFF-RD OPERATIONS, 2L, 2W, MORE THAN 15' (4.5 m) AWAY
701006-05	OFF-RD OPERATIONS, 2L, 2W, 15' (4.5 m) TO 24" (600 mm) FROM PAVEMENT EDGE
701201-05	LANE CLOSURE, 2L, 2W, DAY ONLY, FOR SPEEDS ≥ 45 MPH
701321-18	LANE CLOSURE, 2L, 2W, BRIDGE REPAIR WITH BARRIER
701901-08	TRAFFIC CONTROL DEVICES
704001-08	TEMPORARY CONCRETE BARRIER
780001-05	TYPICAL PAVEMENT MARKINGS
781001-04	TYPICAL APPLICATIONS RAISED REFLECTIVE PAVEMENT MARKERS
782006-01	GUARDRAIL AND BARRIER WALL REFLECTOR MOUNTING DETAILS

FILENAME = C:\Users\jpush\OneDrive - QEI\QDoc\Consult\Projects\112\_IDOT\_D2\_Ver-Var Bridge\00-Work\Work Order 4\410 - CADD\6-R13\_089-0066\264R13-SHT-GenNotes.dgn



USER NAME = jpush	DESIGNED - JRP	REVISED - 07-14-2022
	DRAWN - JRP	REVISED -
PLOT SCALE = 48.0000' / in.	CHECKED -	REVISED -
PLOT DATE = 5/6/2022	DATE - 05/06/2022	REVISED -

**STATE OF ILLINOIS  
DEPARTMENT OF TRANSPORTATION**

<b>INDEX OF SHEETS, STATE STANDARDS &amp; GENERAL NOTES</b>			
SCALE: N.T.S.	SHEET 1	OF 1 SHEETS	STA. TO STA.

F.A.S. RTE.	SECTION	COUNTY	TOTAL SHEETS	SHEET NO.
1087	(106BR-2)BDR	STEPHENSON	21	2
CONTRACT NO. 64R13				
ILLINOIS FED. AID PROJECT				

CONSTRUCTION CODE  
BRIDGE 0047  
80% FED / 20% STATE

CODE NO.	ITEM	UNIT	TOTAL QUANTITY	SN 089-0066 STEPHENSON COUNTY
40600290	BITUMINOUS MATERIALS (TACK COAT)	POUND	382	382
40600982	HOT-MIX ASPHALT SURFACE REMOVAL - BUTT JOINT	SQ YD	356	356
40600990	TEMPORARY RAMP	SQ YD	54	54
40604050	HOT-MIX ASPHALT SURFACE COURSE, 1L-9.5, MIX "C", N50	TON	62	62
42000070	PAVEMENT CONNECTOR (HMA) FOR BRIDGE APPROACH SLAB	SQ YD	43	43
42001300	PROTECTIVE COAT	SQ YD	383	383
44000100	PAVEMENT REMOVAL	SQ YD	43	43
48203023	HOT-MIX ASPHALT SHOULDERS, 6 1/2"	SQ YD	649	649
59000200	EPOXY CRACK INJECTION	FOOT	57	57
* 63000001	STEEL PLATE BEAM GUARDRAIL, TYPE A, 6 FOOT POSTS	FOOT	63	63
* 63100085	TRAFFIC BARRIER TERMINAL, TYPE 6	EACH	4	4
* 63100167	TRAFFIC BARRIER TERMINAL, TYPE 1 (SPECIAL) TANGENT	EACH	3	3
* 63100169	TRAFFIC BARRIER TERMINAL, TYPE 1 (SPECIAL) FLARED	EACH	1	1
63200310	GUARDRAIL REMOVAL	FOOT	413	413
64200108	SHOULDER RUMBLE STRIPS, 8 INCH	FOOT	224	224
67000400	ENGINEER'S FIELD OFFICE, TYPE A	CAL MO	2	2
67100100	MOBILIZATION	L SUM	1	1

\* DENOTES SPECIALTY ITEM

FILENAME = C:\Users\jpush\OneDrive - QEI\QCDoc\Projects\2112\_IDOT\_D2\_Var-Var Bridge\400-Work\Work Order 41410 - CADD\64R13\_089-0066\Z64R13-SHT-50Q.dgn



USER NAME = jpush	DESIGNED - JRP	REVISED -  07-14-2022
	DRAWN - JRP	REVISED -
PLOT SCALE = 40.0000' / in.	CHECKED -	REVISED -
PLOT DATE = 5/6/2022	DATE - 05/06/2022	REVISED -

STATE OF ILLINOIS  
DEPARTMENT OF TRANSPORTATION

SUMMARY OF QUANTITIES

SCALE: N.T.S. SHEET 1 OF 3 SHEETS STA. TO STA.

F.A.S. RTE.	SECTION	COUNTY	TOTAL SHEETS	SHEET NO.
1087	(106BR-2)BDR	STEPHENSON	21	3
CONTRACT NO. 64R13			ILLINOIS FED. AID PROJECT	

REV. 7/15/22 REV. 6/21/22 REV. 6/8/22

CONSTRUCTION CODE  
BRIDGE 0047  
80% FED / 20% STATE

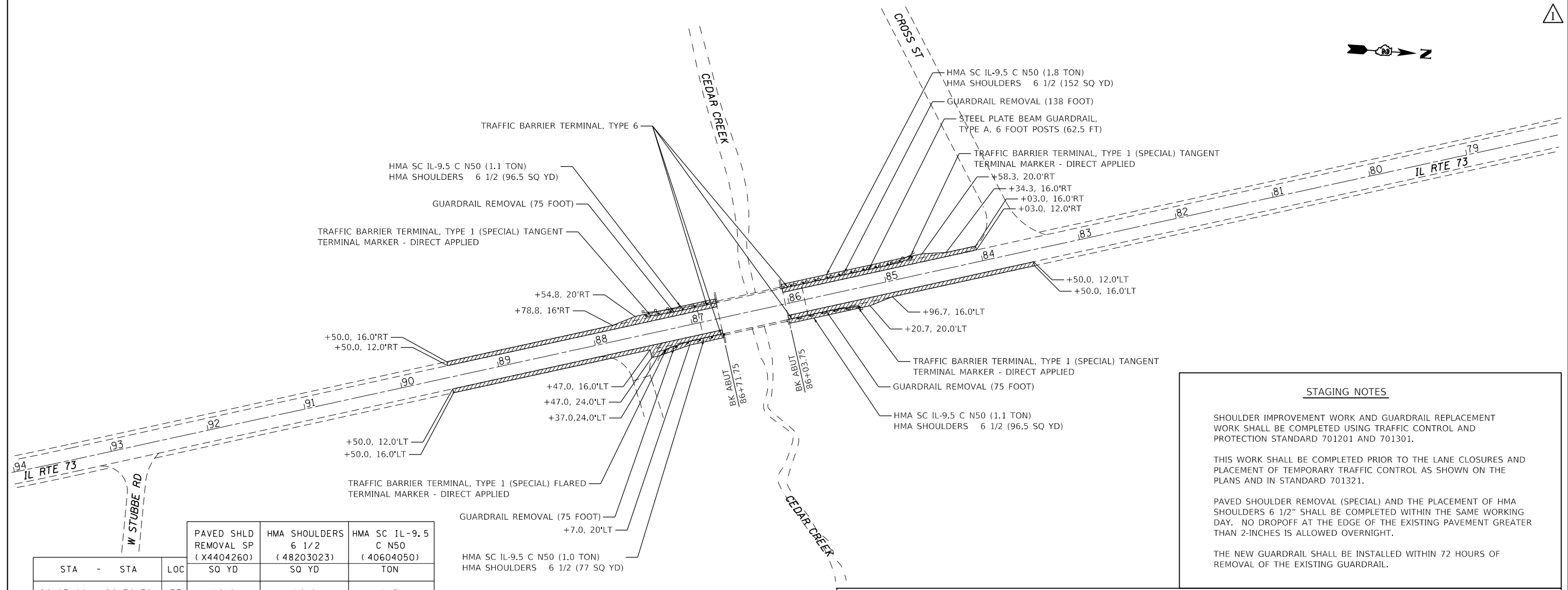
CODE NO.	ITEM	UNIT	TOTAL QUANTITY	SN 089-0066 STEPHENSON COUNTY
* 78200011	BARRIER WALL REFLECTORS, TYPE C	EACH	28	28
78300200	RAISED REFLECTIVE PAVEMENT MARKER REMOVAL	EACH	9	9
X4404260	PAVED SHOULDER REMOVAL (SPECIAL)	SQ YD	649	649
X5030250	BRIDGE DECK GROOVING (LONGITUDINAL)	SQ YD	288	288
* X7820007	GUARDRAIL REFLECTORS, TYPE C (SPECIAL)	EACH	15	15
Z0001800	APPROACH SLAB REPAIR (PARTIAL DEPTH)	SQ YD	10	10
Z0012130	BRIDGE DECK SCARIFICATION 3/4"	SQ YD	383	383
Z0012164	BRIDGE DECK MICROSILICA CONCRETE OVERLAY 2 1/2"	SQ YD	383	383
Z0016002	DECK SLAB REPAIR (FULL DEPTH, TYPE II)	SQ YD	5	5
Z0029090	DIAMOND GRINDING (BRIDGE SECTION)	SQ YD	335	335

\* DENOTES SPECIALTY ITEM

FILENAME = C:\Users\jpush\OneDrive - QEI\QCDoc\Consult\Projects\2112\_IDOT\_D2\_Var-Var Bridge\400-Work\Work Order 41410 - CADD\64R13\_089-0066\Z64R13-SHT-50Q.dgn

	USER NAME = jpush	DESIGNED - JRP	REVISED -  07-14-2022	<b>STATE OF ILLINOIS DEPARTMENT OF TRANSPORTATION</b>	<b>SUMMARY OF QUANTITIES</b>			F.A.S. RTE.	SECTION	COUNTY	TOTAL SHEETS	SHEET NO.	
	PLOT SCALE = 40.0000' / in.	CHECKED -	REVISED -					1087	(106BR-2)BDR	STEPHENSON	21	5	
	PLOT DATE = 5/6/2022	DATE - 05/06/2022	REVISED -			SCALE: N.T.S.	SHEET 3	OF 3 SHEETS	STA.	TO STA.	ILLINOIS FED. AID PROJECT		
	<b>CONTRACT NO. 64R13</b>												

REV. 7/15/22 REV. 6/21/22



**STAGING NOTES**

SHOULDER IMPROVEMENT WORK AND GUARDRAIL REPLACEMENT WORK SHALL BE COMPLETED USING TRAFFIC CONTROL AND PROTECTION STANDARD 701201 AND 701301.

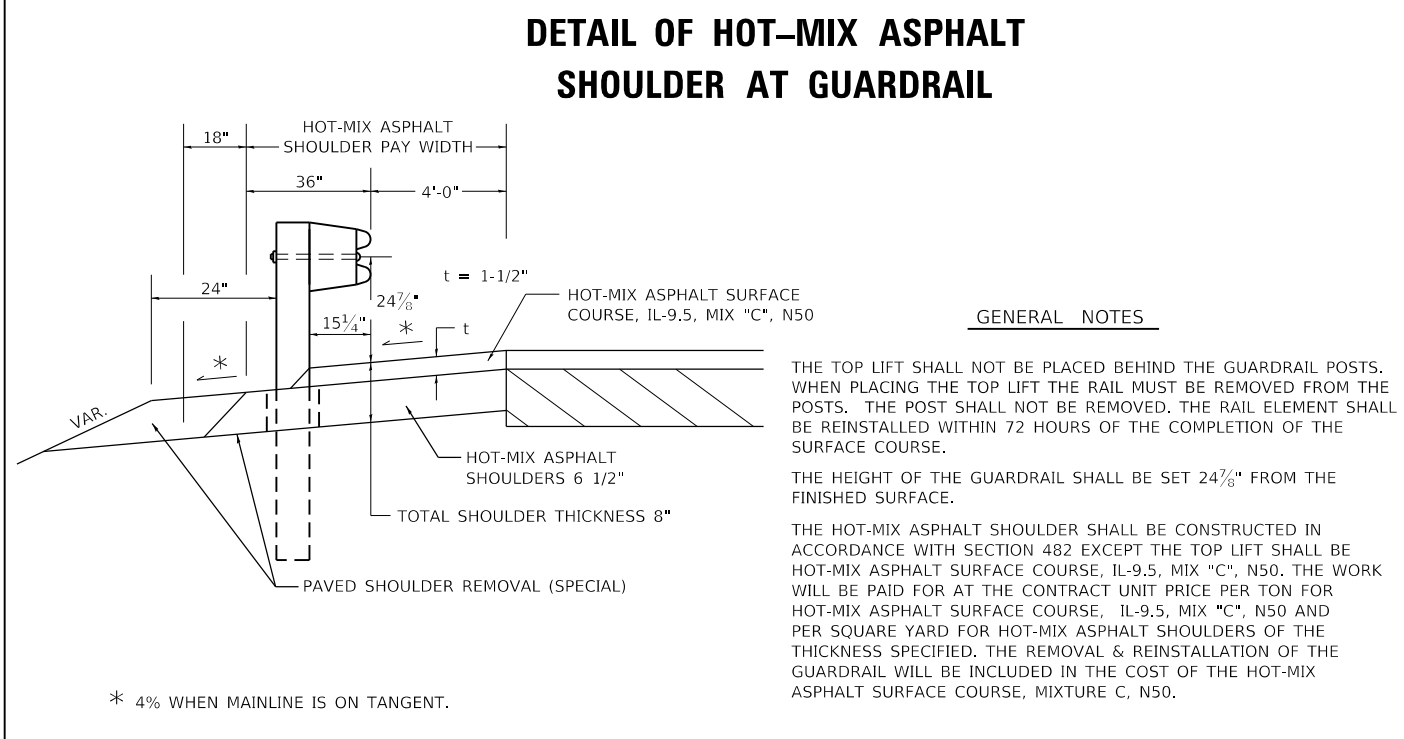
THIS WORK SHALL BE COMPLETED PRIOR TO THE LANE CLOSURES AND PLACEMENT OF TEMPORARY TRAFFIC CONTROL AS SHOWN ON THE PLANS AND IN STANDARD 701321.

PAVED SHOULDER REMOVAL (SPECIAL) AND THE PLACEMENT OF HMA SHOULDERS 6 1/2" SHALL BE COMPLETED WITHIN THE SAME WORKING DAY. NO DROPOFF AT THE EDGE OF THE EXISTING PAVEMENT GREATER THAN 2-INCHES IS ALLOWED OVERNIGHT.

THE NEW GUARDRAIL SHALL BE INSTALLED WITHIN 72 HOURS OF REMOVAL OF THE EXISTING GUARDRAIL.

STA - STA	LOC	PAVED SHLD REMOVAL SP (X4404260) SQ YD	HMA SHOULDERS 6 1/2 (48203023) SQ YD	HMA SC IL-9.5 C N50 (40604050) TON
84+03.00 - 84+34.30	RT	14.0	14.0	1.2
84+34.30 - 84+58.30	RT	16.0	16.0	1.1
84+58.30 - 86+03.75	RT	129.3	129.3	7.3
83+50.00 - 84+96.70	LT	65.3	65.3	5.5
84+96.70 - 85+20.70	LT	16.0	16.0	1.1
85+20.70 - 86+03.75	LT	73.9	73.9	4.2
86+71.75 - 87+54.80	RT	73.9	73.9	4.2
87+54.80 - 87+78.80	RT	16.0	16.0	1.1
87+78.80 - 89+50.00	RT	76.1	76.1	6.4
86+71.75 - 87+07.00	LT	31.4	31.4	1.8
87+07.00 - 87+37.00	LT	33.4	33.4	2.5
87+37.00 - 87+47.00	LT	13.4	13.4	0.9
87+47.00 - 89+50.00	LT	90.3	90.3	7.7

STA - STA	LOC	FOOT	SPBGR TY A 6FT POSTS (63000001) EACH	TRAF BAR TERM T6 (63100085) EACH	TR BAR TRM T1 SPL TAN (63100167) EACH	TR BAR TRM T1 SPL FLR (63100169) EACH	TERMINAL MARKER - DA (72501000) EACH
84+67.00 - 85+04.50	RT				1		1
85+04.50 - 85+67.00	RT	62.5					
85+67.00 - 86+04.50	RT		1				
85+29.50 - 85+67.00	LT			1			1
85+67.00 - 86+04.50	LT			1			
86+71.00 - 87+08.50	RT		1				
87+08.50 - 87+46.00	RT			1			1
86+71.00 - 87+08.50	LT			1			
87+08.50 - 87+46.00	LT					1	1



**GENERAL NOTES**

THE TOP LIFT SHALL NOT BE PLACED BEHIND THE GUARDRAIL POSTS. WHEN PLACING THE TOP LIFT THE RAIL MUST BE REMOVED FROM THE POSTS. THE POST SHALL NOT BE REMOVED. THE RAIL ELEMENT SHALL BE REINSTALLED WITHIN 72 HOURS OF THE COMPLETION OF THE SURFACE COURSE.

THE HEIGHT OF THE GUARDRAIL SHALL BE SET 24 7/8" FROM THE FINISHED SURFACE.

THE HOT-MIX ASPHALT SHOULDER SHALL BE CONSTRUCTED IN ACCORDANCE WITH SECTION 482 EXCEPT THE TOP LIFT SHALL BE HOT-MIX ASPHALT SURFACE COURSE, IL-9.5, MIX "C", N50. THE WORK WILL BE PAID FOR AT THE CONTRACT UNIT PRICE PER TON FOR HOT-MIX ASPHALT SURFACE COURSE, IL-9.5, MIX "C", N50 AND PER SQUARE YARD FOR HOT-MIX ASPHALT SHOULDERS OF THE THICKNESS SPECIFIED. THE REMOVAL & REINSTALLATION OF THE GUARDRAIL WILL BE INCLUDED IN THE COST OF THE HOT-MIX ASPHALT SURFACE COURSE, MIXTURE C, N50.

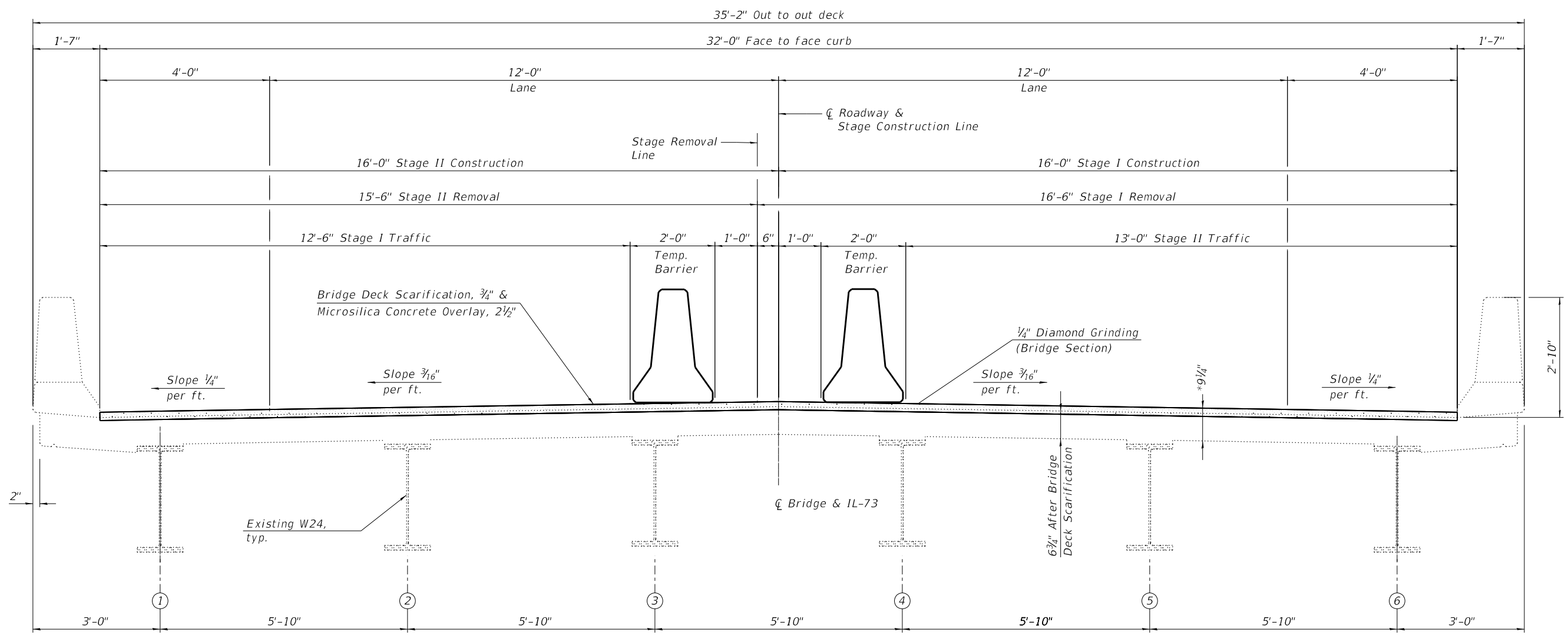
<b>QUANDEL</b> CONSULTANTS	USER NAME = jpush	DESIGNED - JRP	REVISED - 07-14-2022
	PLOT SCALE = 100.0000' / 1" = 100'	DRAWN - JRP	REVISED -
	PLOT DATE = 5/19/2022	CHECKED -	REVISED -
		DATE - 05/06/2022	REVISED -

**STATE OF ILLINOIS  
DEPARTMENT OF TRANSPORTATION**

**SHOULDER AND GUARDRAIL PLAN  
CEDAR CREEK SN 089-0066**

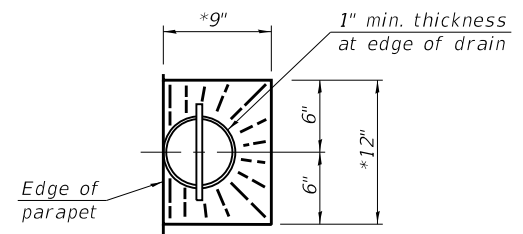
SCALE: 1" = 50'    SHEET OF SHEETS    STA. TO STA.

F.A.S. RTE. 1087	SECTION (106BR-2)BDR	COUNTY STEPHENSON	TOTAL SHEETS 21	SHEET NO. 8
CONTRACT NO. 64R13				
ILLINOIS FED. AID PROJECT				



**CROSS SECTION**  
(Looking South)

\*Prior to grinding



**DECK DRAIN DETAIL**

MODEL: 2D Sheet H  
 FILE NAME: C:\Users\jippett\OneDrive - QEI\OneDrive\Projects\2112\_IDOT\_D2\_Var-Var\_Bridge\400-Work\Work Order 41410 - CADD\64R13\_089-0066\0890066-64R13-002-Cross Section.dgn  
 7/14/2022 10:39:20 AM

**Prairie Engineers, P.C.**  
 22484 Grossenbach Road  
 Washington, IL 61571  
 (217) 605-0403  
 www.prairieengineers.com  
 PROFESSIONAL DESIGN FIRM NO. 154-005965  
 © Copyright Prairie Engineers, P.C. 2022

USER NAME =	jippett	DESIGNED -	JRT	REVISED -	07-14-2022
CHECKED -	JPB	REVISIONS			
PLOT SCALE =	0.166666' / in.	DRAWN -	JLM	REVISED -	
PLOT DATE =	7/14/2022	CHECKED -	JRT	REVISED -	

**STATE OF ILLINOIS**  
**DEPARTMENT OF TRANSPORTATION**

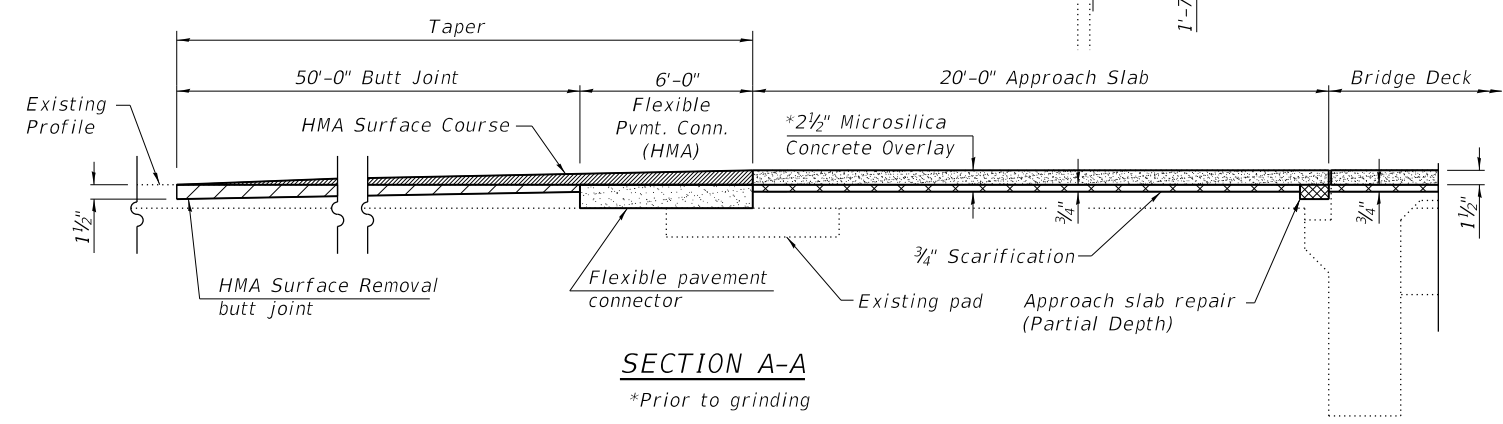
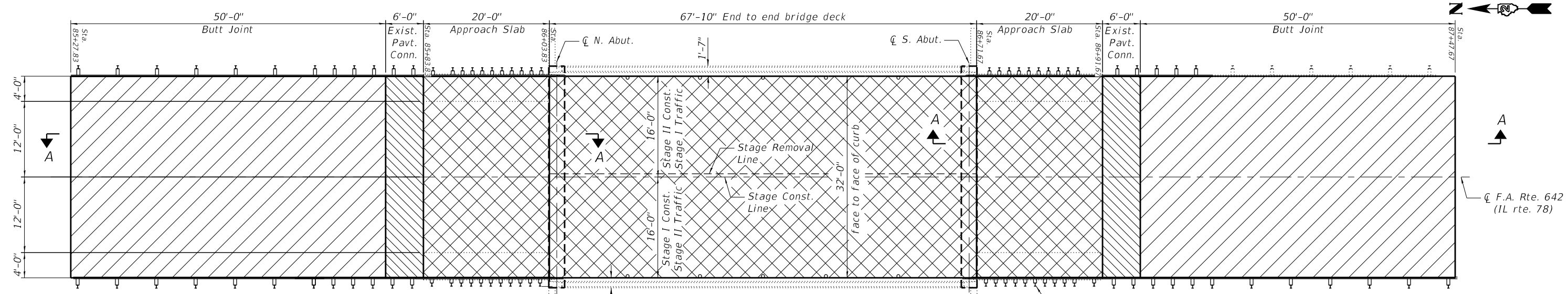
**CROSS SECTION**  
**S.N. 089-0066**

SHEET 2 OF 5 SHEETS

F.A.S. RTE.	SECTION	COUNTY	TOTAL SHEETS	SHEET NO.
1087	(106BR-2)BDR	STEPHENSON	21	10
CONTRACT NO. 64R13				
ILLINOIS FED. AID PROJECT				

REVISED ENTIRE SHEET 7/15/22

MODEL: 2D Sheet H  
 FILE NAME: C:\Users\jippett\OneDrive - QEI\Documents\Projects\1112\_IDOT\_D2\_Var-Var\_Bridge\400-Work\Work Order 41410 - CADD\64R13\_089-0066\0890066-64R13-003-Wearing Surface Plan.dgn  
 7/14/2022 10:40:01 AM

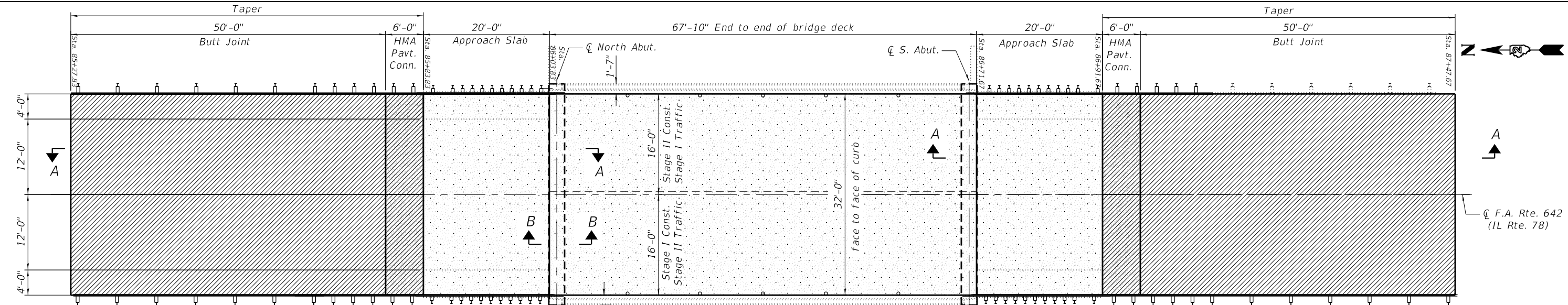


**LEGEND**

- HMA Surface Removal - Butt Joint
- Scarification 3/4"
- Pavement Removal

**BILL OF MATERIAL**

ITEM	UNIT	QUANTITY
Bridge Deck Scarification 3/4"	Sq. Yd.	383
HMA Surface Removal - Butt Joint	Sq. Yd.	356
Pavement Removal	Sq. Yd.	43

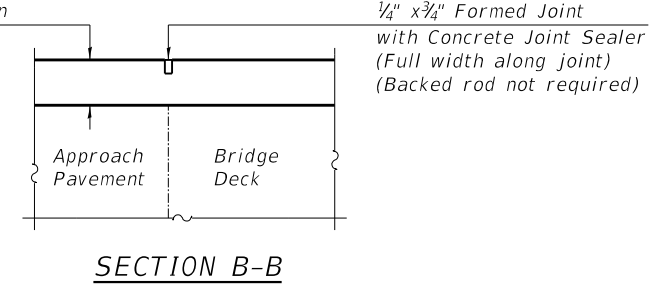


**LEGEND**

- HMA Surface Course
- 2 1/2" Bridge Deck Microsilica Concrete Overlay, Bridge Deck Grooving (Longitudinal), 1/4" Diamond Grinding (Bridge Section)
- HMA Pavt. Conn.

**BILL OF MATERIAL**

ITEM	UNIT	QUANTITY
HMA Surface Course, IL 9.5 Mix "C" N50	Ton	22
Bridge Deck Microsilica Conc. Ovly. 2 1/2"	Sq. Yd.	383
Bridge Deck Grooving (Longitudinal)	Sq. Yd.	288
Diamond Grinding (Bridge Section)	Sq. Yd.	335
Pavement Connector (HMA)	Sq. Yd.	43
Protective Coat	Sq. Yd.	383
Traffic Barrier Terminal, Type 6	Each	4



**SECTION B-B**

**STATE OF ILLINOIS  
 DEPARTMENT OF TRANSPORTATION**

**WEARING SURFACE PLAN  
 S.N. 085-0066**

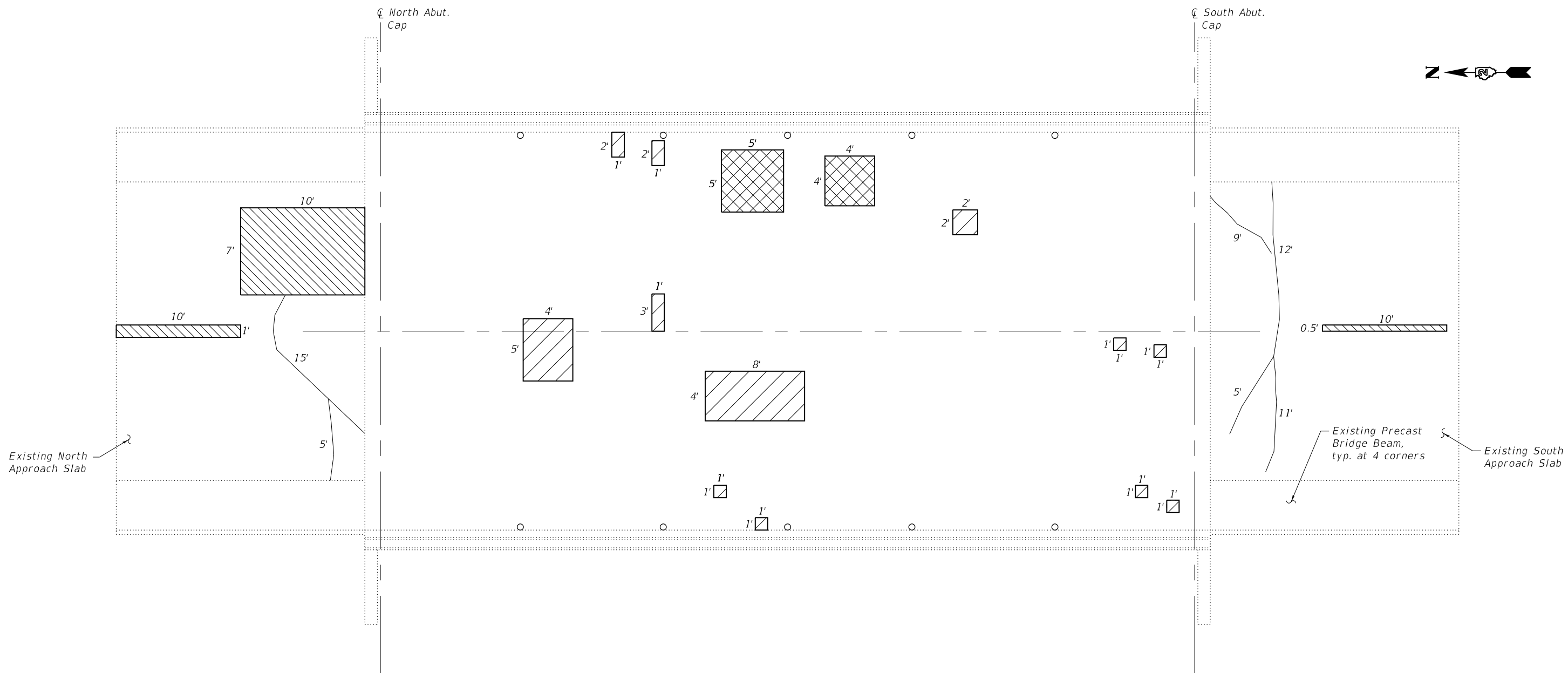
SHEET 3 OF 5 SHEETS

F.A.S. RTE.	SECTION	COUNTY	TOTAL SHEETS	SHEET NO.
1087	(106BR-2)BDR	STEPHENSON	21	11

ILLINOIS FED. AID PROJECT CONTRACT NO. 6R11

REV. 7/15/22

MODEL: 2D Sheet H  
 FILE NAME: C:\Users\jippett\OneDrive - QEI\OneDrive\Projects\2112\_IDOT\_D2\_Var-Var\_Bridges\400-Work\Work Order 41410 - CADD\64R13\_089-0066\0890066-64R13-004-Deck Slab & Appr Slab Repair.dgn



**PLAN**

**LEGEND**

- Deck Slab Repair (Full Depth Type II)
- Deck Slab Repair (Partial Depth) (For Information Only)
- Approach Slab (Partial Depth) -See Note
- Epoxy Crack Injection

**Notes:**  
 Areas of deck slab repair shown are estimated. The Engineer shall show actual locations of the repairs on AS-BUILT PLANS.

Approach Slab Repair (Partial Depth) depth may vary, with a maximum depth of 7 inches.

**BILL OF MATERIAL**

ITEM	UNIT	QUANTITY
Deck Slab Repair (Full Depth, Type II)	Sq. Yd.	5
Approach Slab Repair (Partial Depth)	Sq. Yd.	10
Epoxy Crack Injection	Foot	57

**Prairie Engineers, P.C.**  
 22484 Grossenbach Road  
 Washington, IL 61571  
 (217) 605-0403  
 www.prairieengineers.com  
Professional Design Firm No. 1544-005965

USER NAME =	jippett	DESIGNED -	JRT	REVISED -	07-14-2022
CHECKED -	JPB	REVISIONS			
PLOT SCALE =	0.166666' / in.	DRAWN -	JLM	REVISIONS	
PLOT DATE =	7/14/2022	CHECKED -	JRT	REVISIONS	

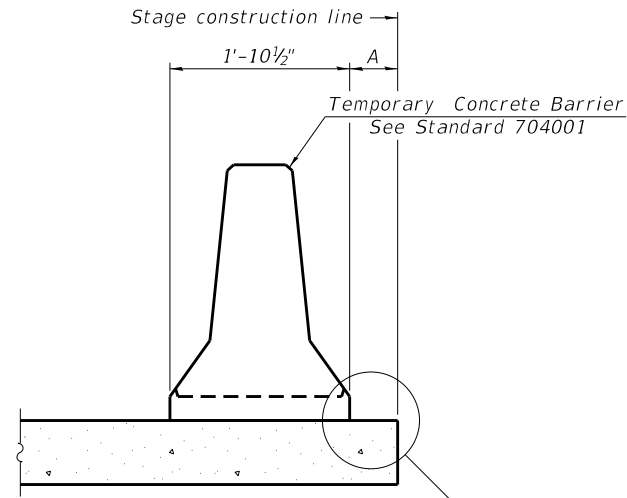
**STATE OF ILLINOIS  
 DEPARTMENT OF TRANSPORTATION**

**DECK SLAB AND APPROACH SLAB REPAIR PLAN  
 S.N. 089-0066**

SHEET 4 OF 5 SHEETS

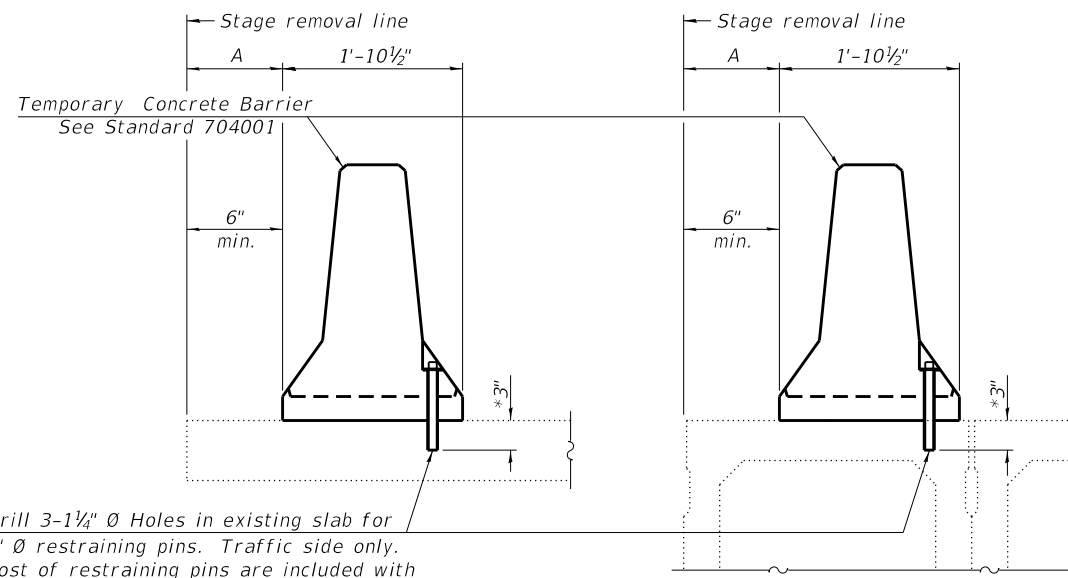
F.A.S. RTE.	SECTION	COUNTY	TOTAL SHEETS	SHEET NO.
1087	(106BR-2)BDR	STEPHENSON	21	12
ILLINOIS FED. AID PROJECT			CONTRACT NO. 61R13	

MODEL: Sheet  
 FILE NAME: C:\Users\jippett\OneDrive - QEI\Documents\Projects\2112\_IDOT\_D2\_Var-Var\_Bridge\400-Work\Work Order 41410 - CADD\64R13\_089-0066\0890066-64R13-005-Temporary Barrier.dgn  
 7/14/2022 10:41:48 AM



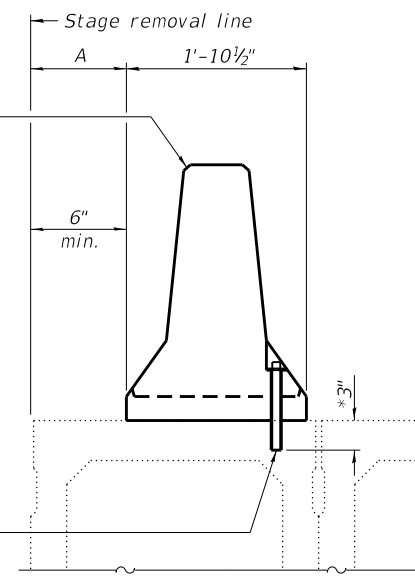
When "A" is 3'-1" or less, the temporary concrete barrier shall be restrained to the new slab according to Detail I, II or III. No restraint is required when "A" is greater than 3'-1". See Detail I, II or III

**NEW SLAB OR NEW DECK BEAM**



Drill 3-1 1/4" Ø Holes in existing slab for 1" Ø restraining pins. Traffic side only. Cost of restraining pins are included with Temporary Concrete Barrier. No restraint is required when "A" is greater than 3'-1".

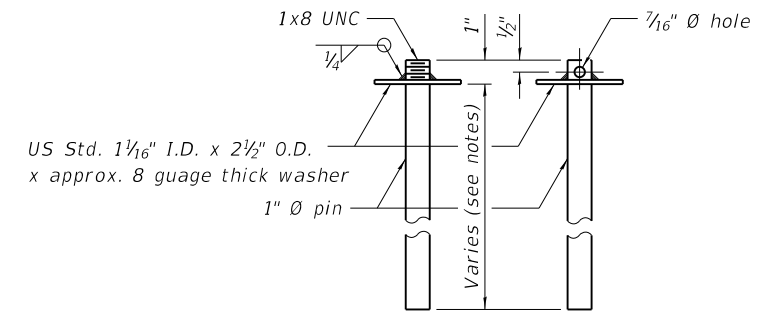
**EXISTING SLAB**



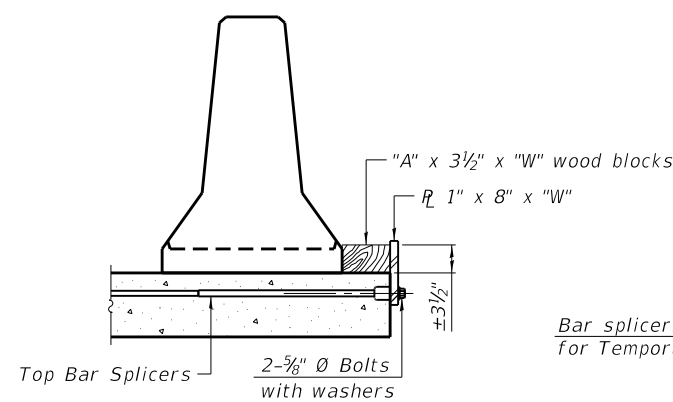
\* When hot-mix asphalt wearing surface is present, embedment shall be 3" plus the wearing surface depth.

**EXISTING DECK BEAM**

**SECTIONS THRU SLAB OR DECK BEAM**

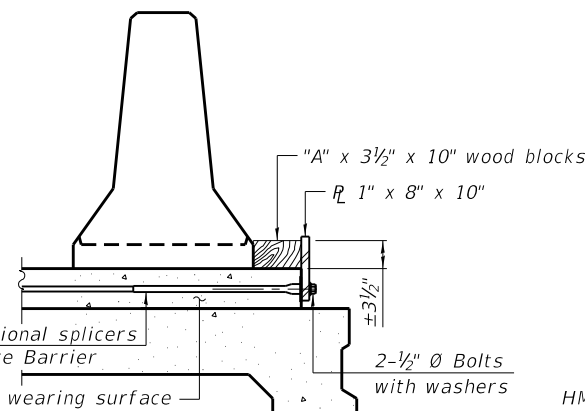


**RESTRAINING PIN**

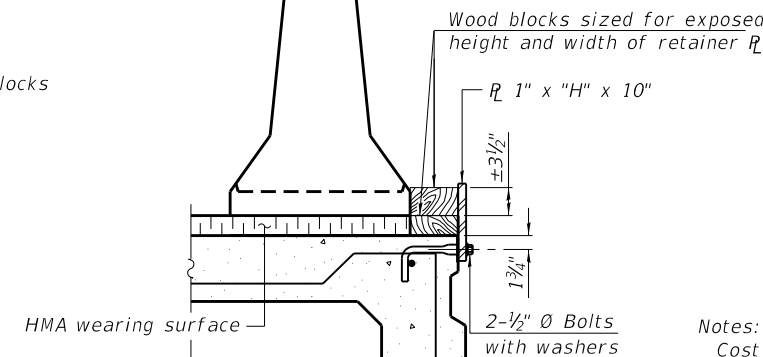


**DETAIL I**

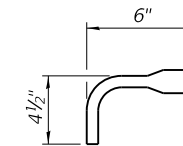
Bar splicers and additional splicers for Temporary Concrete Barrier



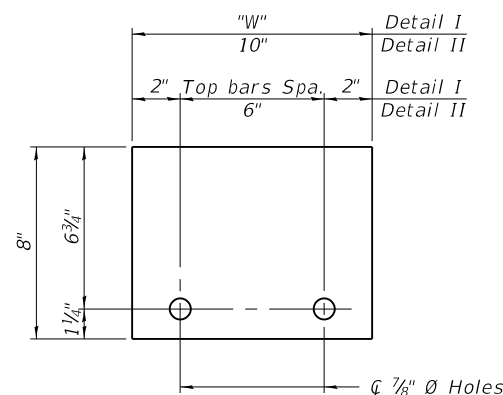
**DETAIL II**



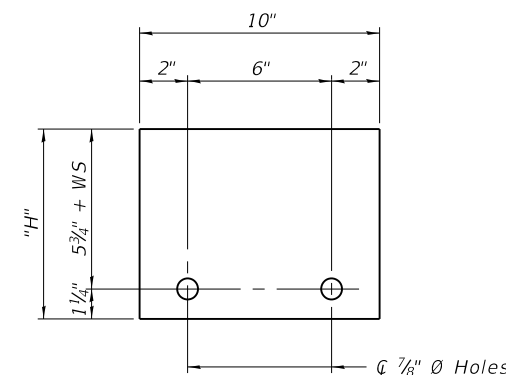
**DETAIL III**



**BAR SPLICER FOR #4 BAR - DETAIL III**



**STEEL RETAINER 1" x 8" x "W"**  
(Detail I and II)



**STEEL RETAINER 1" x "H" x 10"**  
(Detail III)

**Notes:**  
 Cost of retainer assembly is included with Temporary Concrete Barrier.  
 A retainer assembly shall be located at the approximate center of each temporary concrete barrier.  
 The retainer plate shall not be removed until the concrete on the adjacent stage is ready to be poured. For Detail III applications the retainer plate shall not be removed until just prior to placing the adjacent beam.  
 When the 'A' dimension is less than 1 1/2', the wood block shall be omitted and the barrier shall be placed in direct contact with the steel retainer plate. For deck beam applications the minimum required 'A' distance is 6" to accommodate the shear key clamping device.  
 Detail I - Installation for a new bridge deck or bridge slab.  
 Detail II - Installation for a new deck beam with an initial concrete wearing surface. Additional bar splicers shall be provided at 6'-0" centers and paired with the bar splicers of the concrete wearing surface reinforcement to accommodate the installation of the retainer assemblies. The cost of the additional bar splicers is included with the concrete wearing surface.  
 Detail III - Installation for a new deck beam with no initial wearing surface or with an initial hot-mix asphalt (HMA) wearing surface present. The deck beam directly beneath the temporary concrete barrier shall be fabricated with bar splicer inserts in the side of the beam, as detailed, to accommodate the installation of the retainer assemblies. A pair of bar splicers, 6" apart, shall be placed at 6'-0" centers along the length of the beam. The cost of the bar splicers is included with the deck beam.

R-27 2-17-2017



USER NAME =	DESIGNED -	REVISION 1 07-14-2022
PLOT SCALE =	CHECKED -	REVISION -
PLOT DATE =	DRAWN - JRT	REVISION -
	CHECKED -	REVISION -

STATE OF ILLINOIS  
DEPARTMENT OF TRANSPORTATION

TEMPORARY CONCRETE BARRIER FOR STAGE CONSTRUCTION  
STRUCTURE NO. 089-0066

SHEET 5 OF 5 SHEETS

F.A.P. RTE.	SECTION	COUNTY	TOTAL SHEET NO.
1087	(106BR-2)BDR	STEPHENSON	21 13
			CONTRACT NO. 64R13
ILLINOIS		FED. AID PROJECT	

REV. 7/15/22