

08-05-2022 LETTING ITEM 018

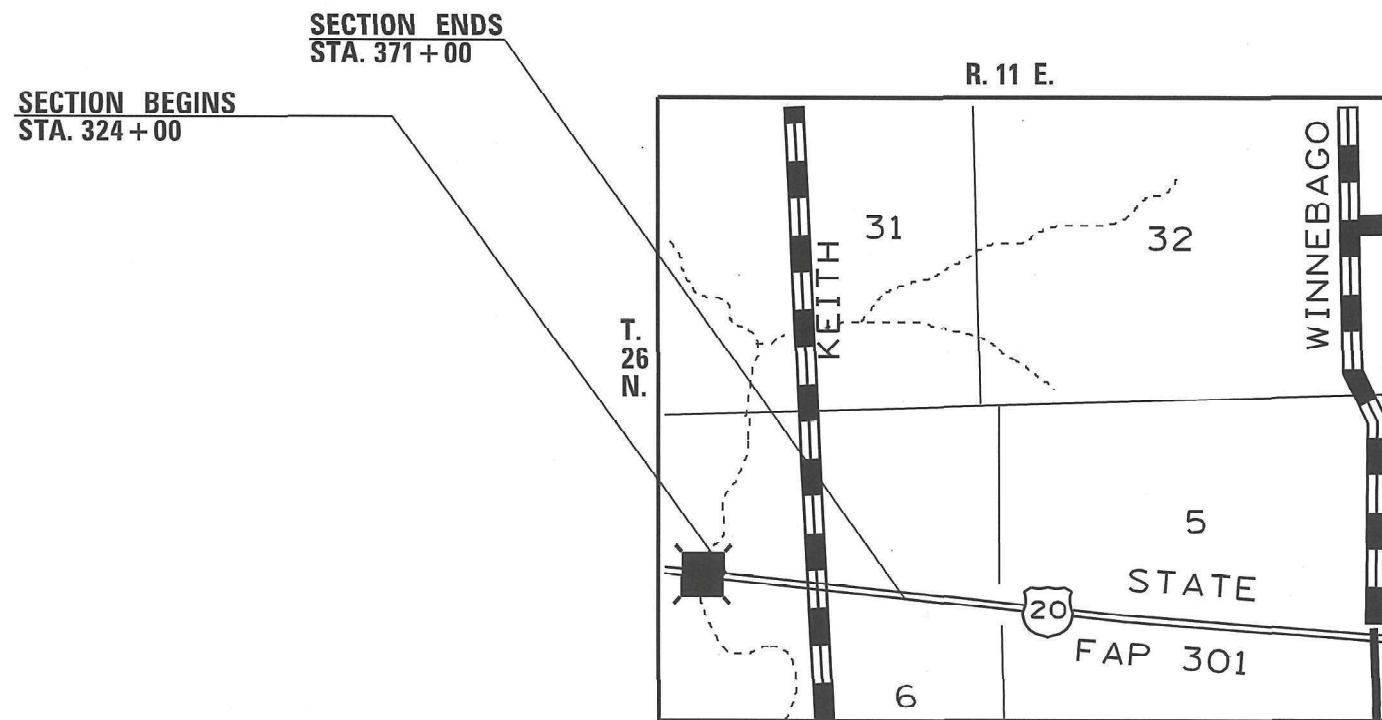
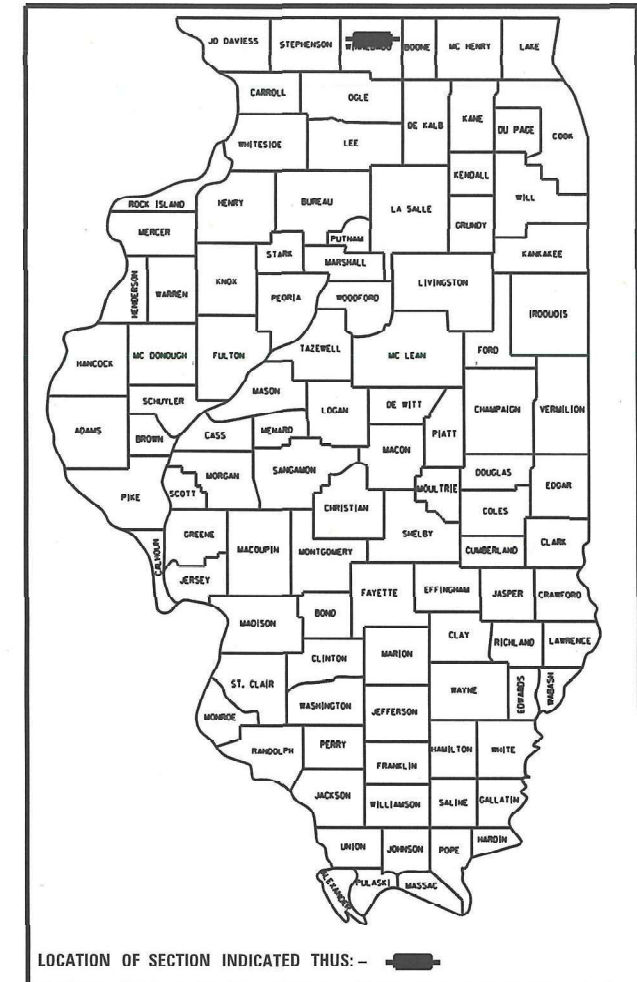
STATE OF ILLINOIS
DEPARTMENT OF TRANSPORTATION
DIVISION OF HIGHWAYS

**PROPOSED
HIGHWAY PLANS**

FAP ROUTE 301 (US 20)
SECTION (17R-2,40R-1)RS
WINNEBAGO COUNTY
C-92-096-22

F.A.P. RTE.	SECTION	COUNTY	TOTAL SHEETS	SHEET NO.
301	(17R-2,40R-1)RS	WINNEBAGO	5	1
FED. ROAD DIST. NO. _		ILLINOIS	CONTRACT NO. 64R77	

D-92-035-22



FOR INDEX OF SHEETS, SEE SHEET NO. 2
FOR STATE STANDARDS, SEE SHEET NO. 2

WINNEBAGO TOWNSHIP SECTIONS (6)

J.U.L.I.E.
JOINT UTILITY LOCATION INFORMATION FOR EXCAVATION
1-800-892-0123
OR 811

GROSS LENGTH = 4,700 FT. = 0.89 MILE

NET LENGTH = 4,700 FT. = 0.89 MILE

STATE OF ILLINOIS
DEPARTMENT OF TRANSPORTATION
DIVISION OF HIGHWAYS

SUBMITTED May 2nd 2022

[Signature]
REGION ENGINEER

July 1, 2022 [Signature]
ENGINEER OF DESIGN AND ENVIRONMENT

July 1, 2022 [Signature]
DIRECTOR OF HIGHWAYS PROJECT IMPLEMENTATION

**PRINTED BY THE AUTHORITY
OF THE STATE OF ILLINOIS**

PROJECT ENGINEER: SCOTT KULLERSTRAND

SQUAD LEADER: LANCE NICKLAUS 815-284-5407

CONTRACT NO. 64R77

FAP ROUTE 301 (US 20) SECTION (17R-2,40R-1)RS WINNEBAGO COUNTY

INDEX

- 1 Cover Sheet
- 2 Index of Sheets / State Standards
- 3 Summary of Quantities
- 4 General Notes
- 5 Typical Section

STATE STANDARDS

- | | |
|-----------|---|
| 701101-05 | OFF-ROAD OPERATIONS, 15'(4.5M) TO 24"(600mm) FROM PAVEMENT EDGE |
| 701400-11 | APPROACH TO LANE CLOSURE, FREEWAY/EXPRESSWAY |
| 701401-13 | LANE CLOSURE, FREEWAY/EXPRESSWAY |
| 701426-09 | LANE CLOSURE, MULTILANE, INTERMITTENT OR MOVING OPERATIONS FOR SPEED \geq 45MPH |
| 701428-01 | TRAFFIC CONTROL, SETUP AND REMOVAL, FREEWAY/EXPRESSWAY |
| 701901-08 | TRAFFIC CONTROL DEVICES |
| 720011-01 | METAL POST FOR SIGNS, MARKERS AND DELINEATORS |
| 728001-01 | TELESCOPING STEEL SIGN SUPPORT |
| 729001-01 | APPLICATIONS OF TYPES A AND B METAL POST (FOR SIGNS & MARKERS) |
| 780001-05 | TYPICAL PAVEMENT MARKINGS |

DISTRICT STANDARDS

- 34.1 Work Zone Sign Details
- 41.1 Typical Pavement Markings

SUMMARY OF QUANTITIES

FAP 301 (US 20)
SECTION (17R-2,4OR-1)RS
WINNEBAGO COUNTY
CONTRACT # 64R77
SHEET 3 OF 5
URBAN
100% State
0005

CODE NO.	ITEM	UNIT	TOTAL QUANTITY
40600295	POLYMERIZED BITUMINOUS MATERIALS (TACK COAT)	POUND	3055
40604174	POLYMERIZED HOT-MIX ASPHALT SURFACE COURSE, IL 9.5, MIX "E", N90	TON	707
44000155	HOT-MIX ASPHALT SURFACE REMOVAL 1.5"	SQ YD	6790
67100100	MOBILIZATION	L SUM	1
70100800	TRAFFIC CONTROL AND PROTECTION, STANDARD 701401	L SUM	1
70200100	NIGHTTIME WORK ZONE LIGHTING	L SUM	1
70300100	SHORT TERM PAVEMENT MARKING	FOOT	658
70300150	SHORT TERM PAVEMENT MARKING REMOVAL	SQ FT	219
* 78001110	PAINT PAVEMENT MARKING LINE - 4"	FOOT	11750
78300200	RAISED REFLECTIVE PAVEMENT MARKER REMOVAL	EACH	33

* Specialty Items

REV. 5/19/22

GENERAL NOTES

The following Mixture Requirements are applicable for this project:

Location and Mixture Use(s):	US 20		
PG:	SURFACE		
Design Air Voids:	SBS PG 70-28		
Mixture Composition:	4.0 @ N90		
Friction Aggregate:	IL 9.5		
Mixture Weight:	E		
Quality Management Program:	119 / LB / SY / IN		
Sublot Size:	QC / QA		
Material Transfer Device			

The Contractor will be required to furnish 5 1/2" high brass stencils as approved by the Engineer and install stationing at 250' intervals. Stationing shall be placed on both lanes of 2-lane highways and on the outside lanes in both directions on 4-lane highways. The stations shall be placed 6" inside the pavement marking edge so they can be read from the shoulder. This work will be included in the cost of the final pavement surface.

The area to be tacked or primed shall be limited to that which can be covered with HMA on the next day's production, but no more than five days in advance of the placement of the HMA, unless approved by the Engineer.

Pavement Marking shall be done according to Standard 780001, except as follows:

1. All words, such as ONLY, shall be 8 feet high.
2. All non-freeway arrows shall be the large size.
3. The distance between yellow no-passing lines shall be 8 inches, not 7 inches, as shown in the detail of Typical Lane and Edge Lines.
4. Centerline Skip Dash Pavement Marking on multi-lane divided, multi-lane undivided, and one-way roadway shall be according to District Standard 41.1.

A quantity of 658 feet of short-term pavement marking has been included in the plans, 470 feet for the centerline and 188 feet for shoulder diagonals.

A quantity of 11,750 feet of paint pavement marking line – 4" has been included in the plans for the centerline and edge line, both white. Both the centerline and edge line shall have two applications of paint applied, 9,400 feet for the edge line and 2,350 feet for the centerline.

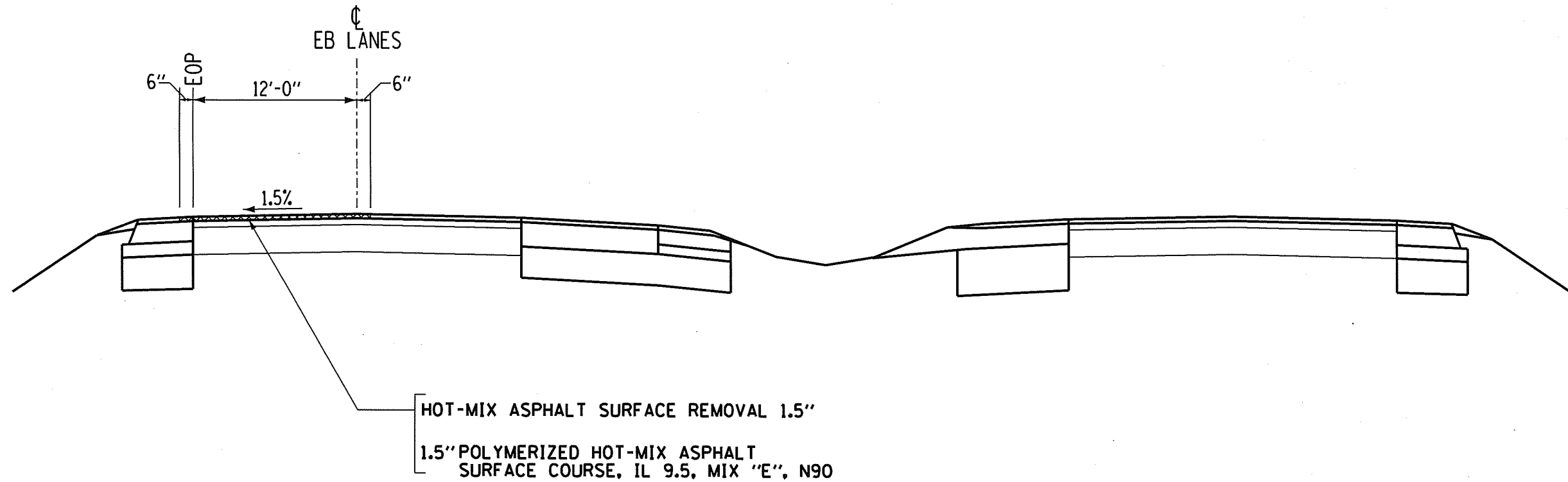
FILE NAME = 64R77.GN.DOCX	USER NAME =	DESIGNED - Engineering Systems	REVISED -	STATE OF ILLINOIS DEPARTMENT OF TRANSPORTATION	GENERAL NOTES	ROUTE	SECTION	COUNTY	TOTAL SHEETS	SHEET NO.
	PLOT SCALE =	DRAWN -	REVISED -			FAP901US20	(17R-2, 4 OR-1)RS	WINNEBAGO	5	4
	PLOT DATE = 5/2/2022 7:31 AM	CHECKED -	REVISED -			CONTRACT NO. 64R77				
	DATE - 4/25/2022 1:08 PM	REVISED -		SCALE:	SHEET NO. OF SHEETS	STA.	TO STA.	ILLINOIS	FED. AID PROJECT	

F.A.P. RTE.	SECTION	COUNTY	TOTAL SHEETS	SHEET NO.
301	(17R-2,40R-1)RS	WINNEBAGO	5	5
STA.		TO STA.		
FED. ROAD DIST. NO.		ILLINOIS	FED. AID PROJECT	

TYPICAL SECTIONS

US ROUTE 20

STA 324+00 - STA 371+00



NOTE:
SURFACE COURSE
(119 LB/SY/IN)

REVISIONS		ILLINOIS DEPARTMENT OF TRANSPORTATION
NAME	DATE	
		DRAWN BY CHECKED BY

SCALE: VERT.
HORIZ.
DATE

PLOT DATE : Nov-02-2022 07:15:28 AM
FILE NAME : S:\Projects\17R-2,40R-1\17R-2,40R-1.dwg
PLOT SCALE : 1/8" = 1' / in.
USER NAME : richmond