

FOR INDEX OF SHEETS, SEE SHEET NO. 2

THE PROJECT IS LOCATED
IN THE CITY OF CHICAGO

TRAFFIC DATA

ADT (2006) = 139,000
WB ADT = 73,670
EB ADT = 65,330

ADT (2026) = 172,000
WB ADT = 91,150
EB ADT = 80,850

POSTED SPEED = EB 35 MPH, WB 45 MPH

PROJECT DESCRIPTION

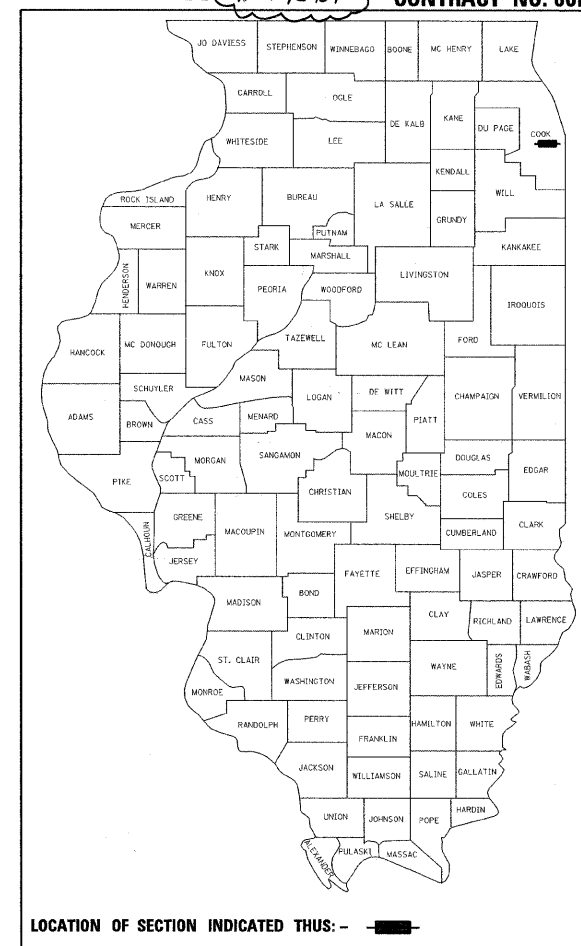
THE EXISTING STRUCTURE (S.N. 016-2445) IS A DUAL DOUBLE-LEAF, TRUNNION TYPE BASCULE BRIDGE, CARRYING THE EASTBOUND AND WESTBOUND TRAFFIC OF CONGRESS PARKWAY OVER THE SOUTH BRANCH OF THE CHICAGO RIVER. THE PROPOSED WORK CONSISTS OF THE REMOVAL AND REPLACEMENT OF THE EXISTING OPEN STEEL GRID DECK WITH AN ORTHOTROPIC CLOSED DECK SYSTEM, INCLUDING THE REMOVAL AND REPLACEMENT OF THE EXISTING REINFORCED CONCRETE DECK AND SIDEWALKS ON APPROACH SPANS. OTHER WORK INCLUDES FLOOR BEAM AND TRUSS REPAIRS, ALUMINUM BARRIER, REMOVE AND REPLACE CENTER BREAK AND REAR BREAKS, BRIDGE HOUSE REHABILITATION, CLEAN AND PAINT EXISTING STRUCTURE. ON THE ADJACENT STRUCTURE (S.N. #016-0460) REPAIR GIRDER K AND PROVIDE GUARDRAIL ALONG THE OUTSIDE EDGES OF PAVEMENT/TURN-OUTS. MECHANICAL IMPROVEMENTS INCLUDE REMOVAL OF ALL TIE SHAFT MACHINERY, REPLACE CENTER LOCK MACHINERY, REPLACE MACHINERY BRAKES, REPLACE BARRIER GATES AND TRAFFIC GATES. THE ELECTRICAL SCOPE WILL INCLUDE MAIN DRIVE MOTOR REPLACEMENT, REPLACE CONTROL SYSTEM, PROVIDE PLC CONTROL SYSTEM, REPLACE FACILITY LIGHTING, REPLACE POWER DISTRIBUTION PANELS AND SWITCHGEAR, REPLACE CABLE AND CONDUIT ROUTING, TRAFFIC SIGNALS AND PROVIDE EMERGENCY POWER.

STATE OF ILLINOIS
DEPARTMENT OF TRANSPORTATION
DIVISION OF HIGHWAYS
**PROPOSED
HIGHWAY PLANS**

F.A.P. ROUTE 389 (CONGRESS PARKWAY)
CONGRESS PARKWAY BRIDGE REHABILITATION
OVER THE SOUTH BRANCH OF THE CHICAGO RIVER
SECTION 2424.2B-R
COOK COUNTY
C-91-073-08
PROJECT NO.: *BHF-0389(004)*

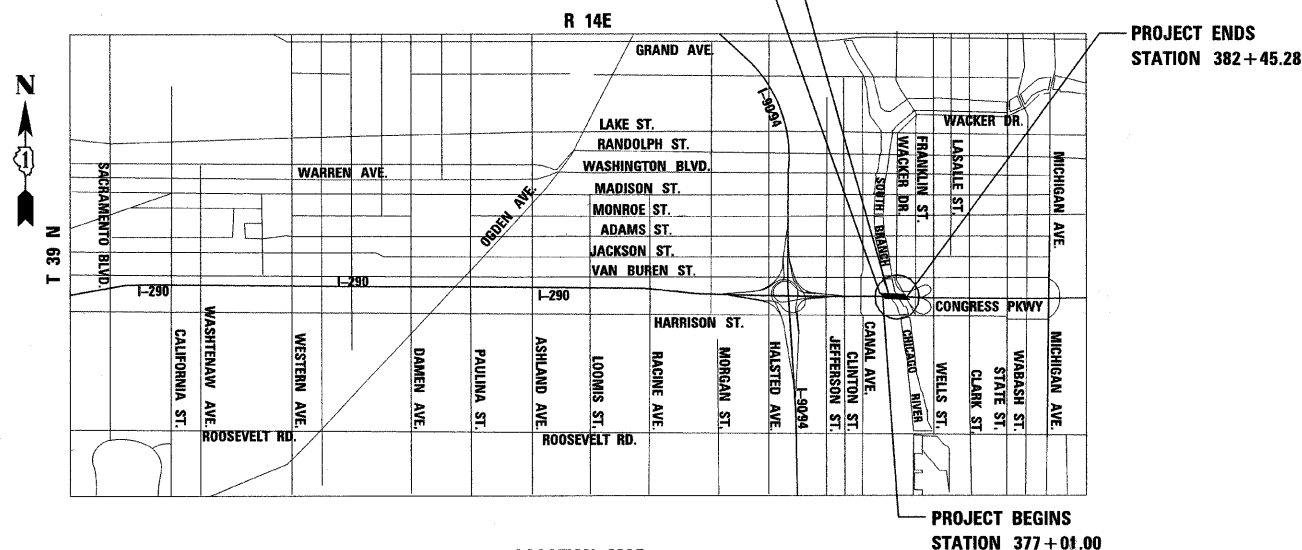
F.A.P. RTE.	SECTION	COUNTY	TOTAL SHEETS	SHEET NO.
389	2424.2B-R	COOK	398	1
FED. ROAD DIST. NO. 1		ILLINOIS	* 398 + 2 = 400	

** +4=404*
D-91-073-08
CONTRACT NO. 60D61



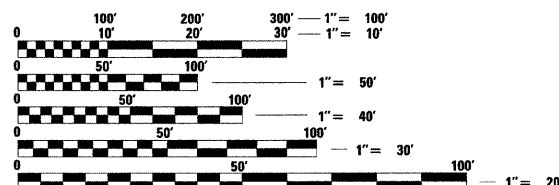
LOCATION OF SECTION INDICATED THIS: - [shaded box] -

CONGRESS PARKWAY BRIDGE OVER THE SOUTH BRANCH OF THE CHICAGO RIVER (SN 016-2445)
CONGRESS PARKWAY BETWEEN CHICAGO RIVER AND POST OFFICE (SN 016-0460)



LOCATION MAP
SCALE: 1 IN = 2000 FT

TOTAL GROSS AND NET LENGTH OF PROJECT = 543.28 FT = .103 MI



FULL SIZE PLANS HAVE BEEN PREPARED USING STANDARD ENGINEERING SCALES. REDUCED SIZED PLANS WILL NOT CONFORM TO STANDARD SCALES. IN MAKING MEASUREMENTS ON REDUCED PLANS, THE ABOVE SCALES MAY BE USED.

C.U.A.N.
DIGGER - CHICAGO UTILITY ALERT NETWORK
1-312-744-7000

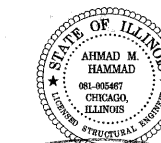
PROJECT ENGINEER: STELIOS NADALIS, PE
PROJECT MANAGER: AHMAD HAMMAD, PE, SE
CONTRACT NO. 60D61

STATE OF ILLINOIS
DEPARTMENT OF TRANSPORTATION
DIVISION OF HIGHWAYS

SUBMITTED *APR 30, 2009*
Diana M. O'Keefe
DEPUTY DIRECTOR OF HIGHWAYS, REGION ONE ENGINEER

June 26, 2009
Charles J. Ingemoll
ENGINEER OF DESIGN AND ENVIRONMENT

June 26, 2009
Christine M. Reed
DIRECTOR OF HIGHWAYS, CHIEF ENGINEER



STELIOS NADALIS, P.E.
LICENSE NO. 062-042340
EXPIRES: November 30, 2009
DATE: *4-26-09*

AHMAD M. HAMMAD, S.E., P.E.
LICENSE NO.: 081-005467
EXPIRES: November 30, 2010
DATE: *4-28-09*

PB Americas, Inc.
230 WEST MONROE STREET, SUITE 900
CHICAGO, ILLINOIS 60606
TEL: 312-782-8150 FAX: 312-782-1684

PRINTED BY THE AUTHORITY
OF THE STATE OF ILLINOIS

Rev. 7

DESIGN - CONSULTANT SERVICES, DISTRICT ONE - BRIAN KUTTAB/PROJECT MANAGER 847-705-4431