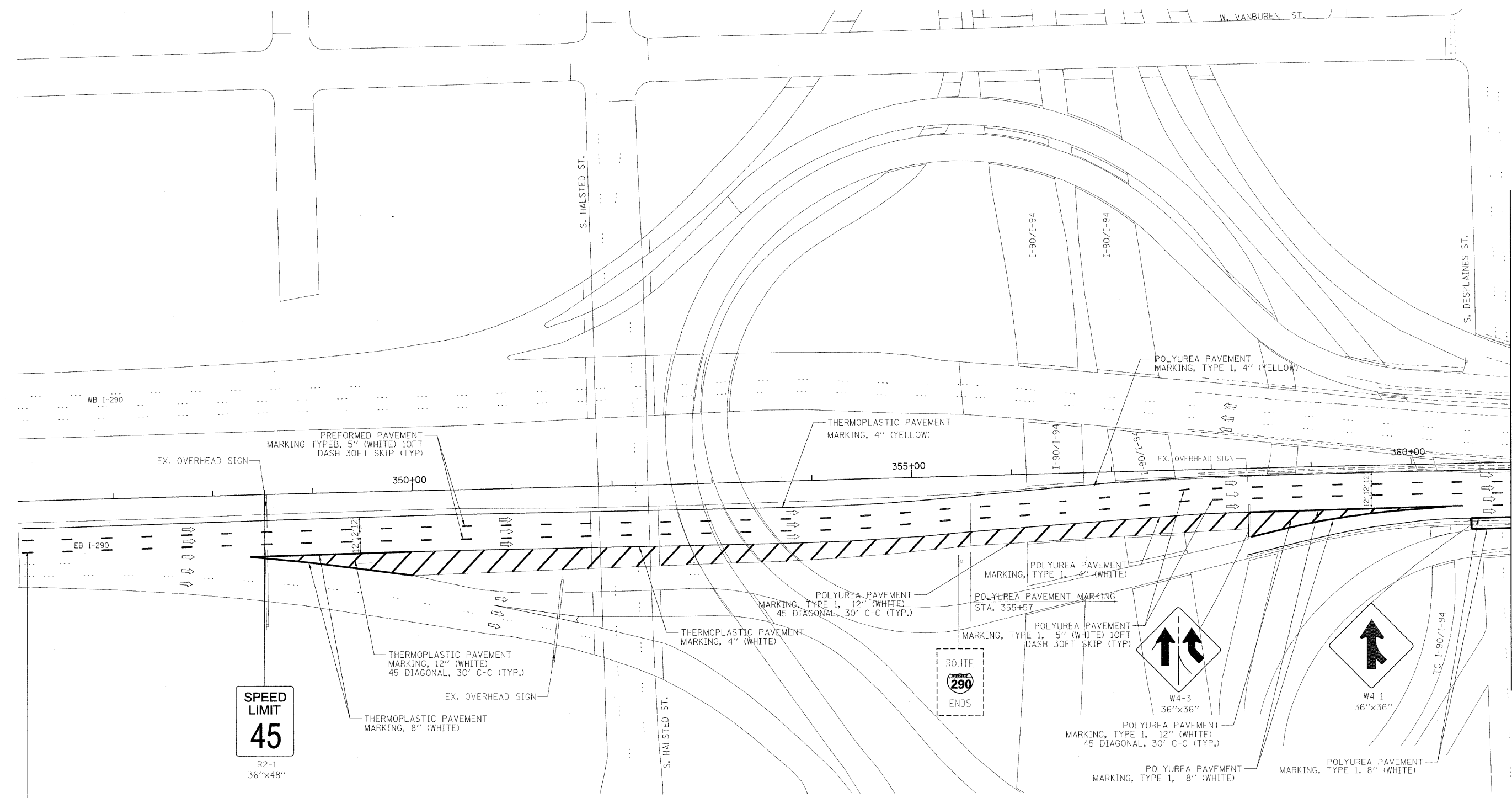
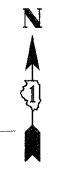


**LEGEND**  
 [Solid Line] PROPOSED SIGN  
 [Dashed Line] EXISTING SIGN  
 [Arrow] DIRECTION OF TRAVEL



MATCH LINE STA 361+00.00

REMOVE TEMP. PAVEMENT MARKING TAPE 8" (3' DASH - 9' SKIP) BETWEEN LANE 2 AND 3 TO RACINE AVE. (FROM STA. 325+87 TO STA. 343+88) AND 8" WHITE LINE FROM STA. 343+88 TO STA. 346+88 AND REPLACE LANE LINE WITH PREFORMED PAVEMENT MARKING, 5" WHITE (10' DASH - 30' SKIP).

**PB Americas, Inc.**  
 230 WEST MONROE STREET,  
 SUITE 900  
 CHICAGO, IL. 60606

USER NAME = #USER#	DESIGNED - RT	REVISED -
FILE NAME = #FILENAME#	DRAWN - MS	REVISED -
PLOT SCALE = #SCALE#	CHECKED - DS	REVISED -
PLOT DATE = 5/6/2009	DATE - 5/08/09	REVISED -

**STATE OF ILLINOIS  
 DEPARTMENT OF TRANSPORTATION**

**CONGRESS PARKWAY OVER SOUTH BRANCH OF THE CHICAGO RIVER  
 PAVEMENT MARKING AND SIGNING PLAN**

SCALE: 1" = 50'    SHEET NO. 60 OF 83 SHEETS    STA. 377+01.00 TO STA. 382+45.28

F.A.P. RTE.	SECTION	COUNTY	TOTAL SHEETS	SHEET NO.
389	2424-2B-R	COOK	398	60
FED. ROAD DIST. NO. 1 ILLINOIS FED. AID PROJECT			CONTRACT NO. 60D61	