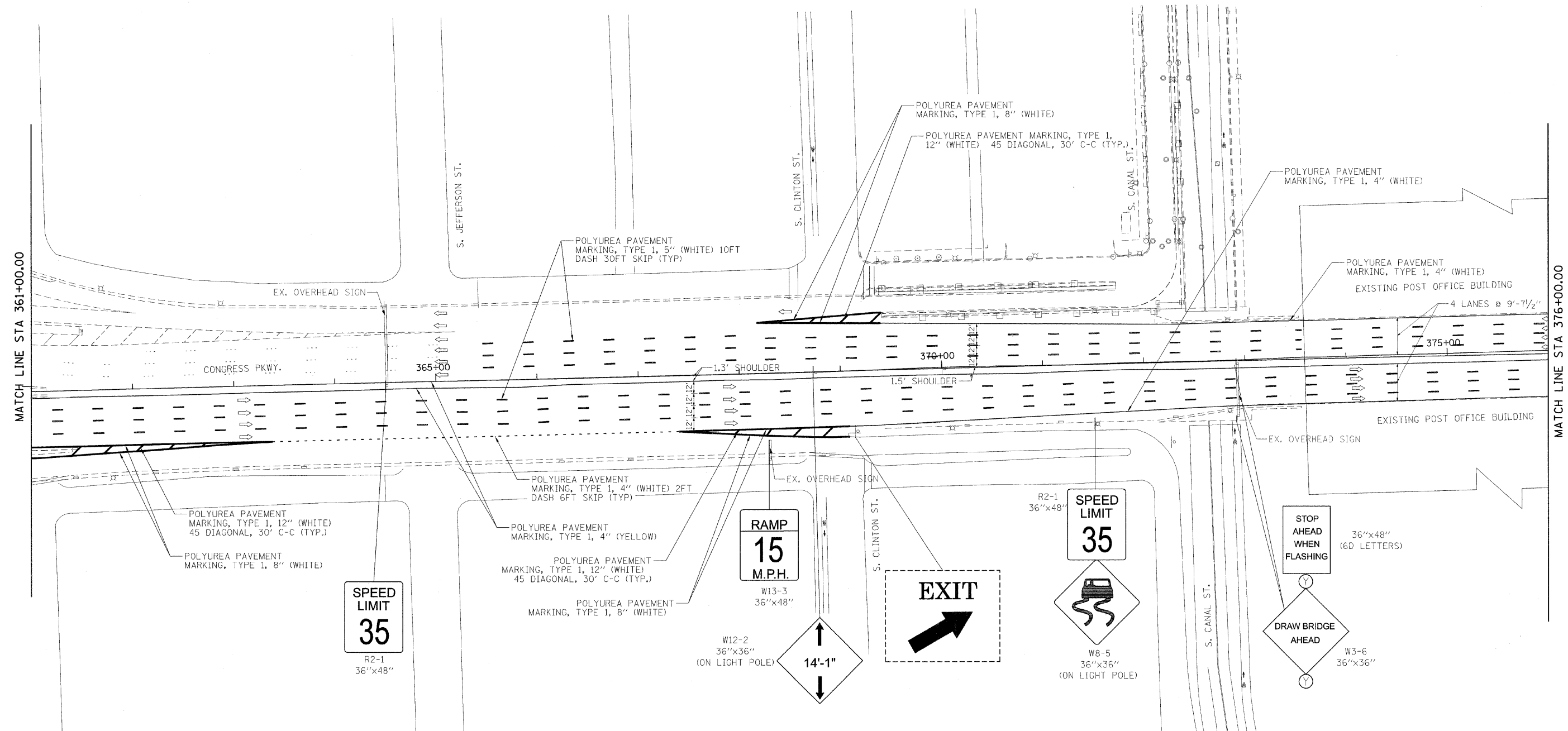


LEGEND
 [Solid Line] PROPOSED SIGN
 [Dashed Line] EXISTING SIGN
 [Arrow] DIRECTION OF TRAVEL



PB Americas, Inc.
 230 WEST MONROE STREET,
 SUITE 900
 CHICAGO, IL. 60606

USER NAME = #USER#	DESIGNED - RT	REVISED -
FILE NAME = #FILENAME#	DRAWN - MS	REVISED -
PLOT SCALE = #SCALE#	CHECKED - DS	REVISED -
PLOT DATE = 5/7/2009	DATE - 5/08/09	REVISED -

**STATE OF ILLINOIS
 DEPARTMENT OF TRANSPORTATION**

**CONGRESS PARKWAY OVER SOUTH BRANCH OF THE CHICAGO RIVER
 PAVEMENT MARKING AND SIGNING PLAN**

SCALE: 1" = 50' SHEET NO. 61 OF 83 SHEETS STA. 377+01.00 TO STA. 382+45.28

F.A.P. R.T.E. 389	SECTION 2424-2B-R	COUNTY COOK	TOTAL SHEETS 398	SHEET NO. 61
CONTRACT NO. 60D61				
FED. ROAD DIST. NO. 1 ILLINOIS FED. AID PROJECT				