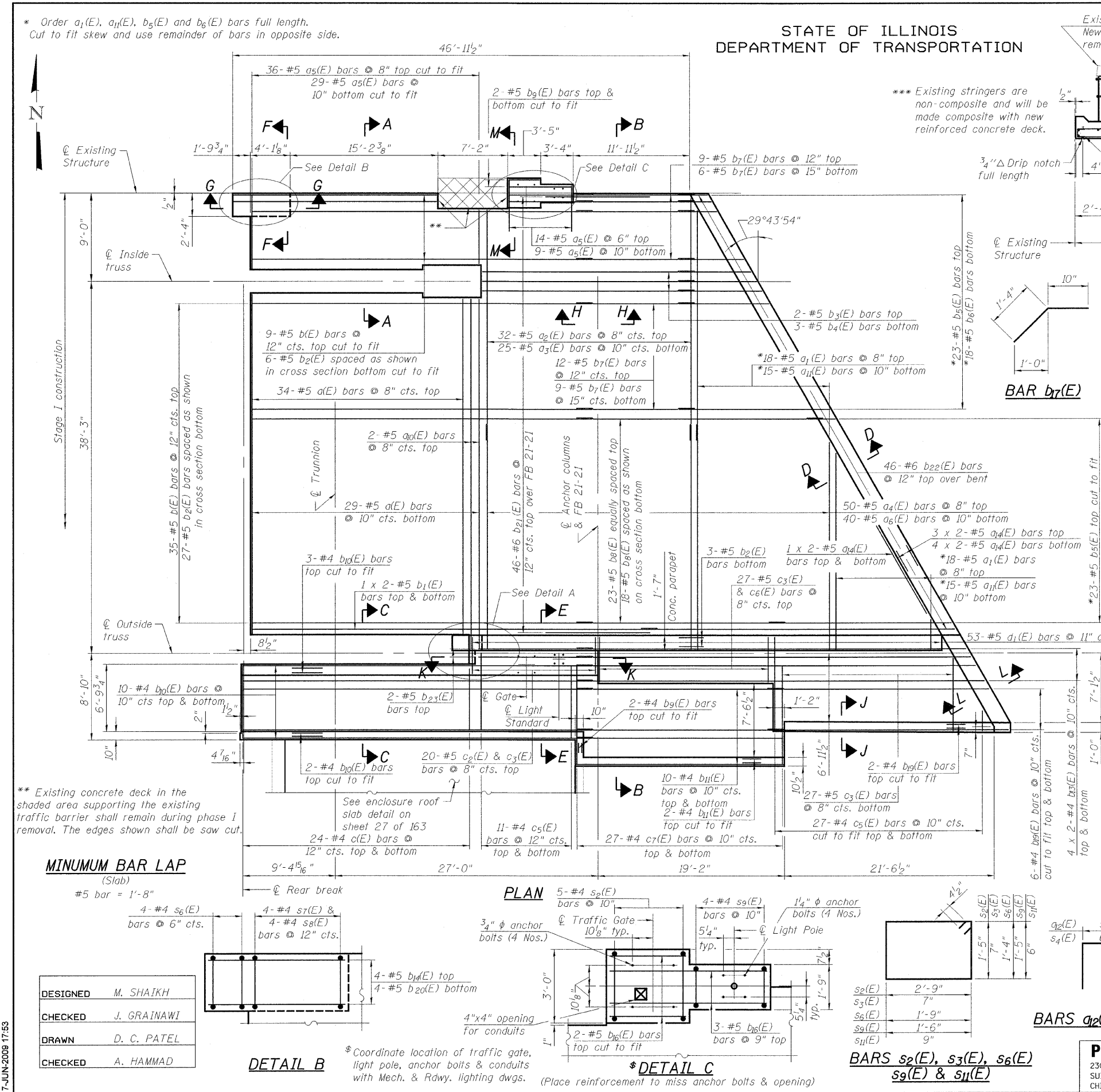


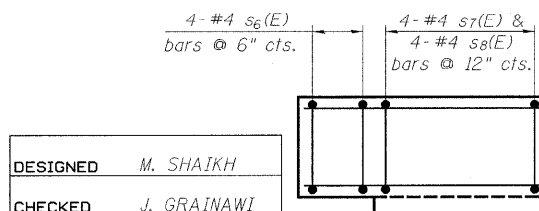
* Order a₁(E), a₁₁(E), b₅(E) and b₆(E) bars full length.
Cut to fit skew and use remainder of bars in opposite side.

STATE OF ILLINOIS
DEPARTMENT OF TRANSPORTATION



** Existing concrete deck in the shaded area supporting the existing traffic barrier shall remain during phase I removal. The edges shown shall be saw cut.

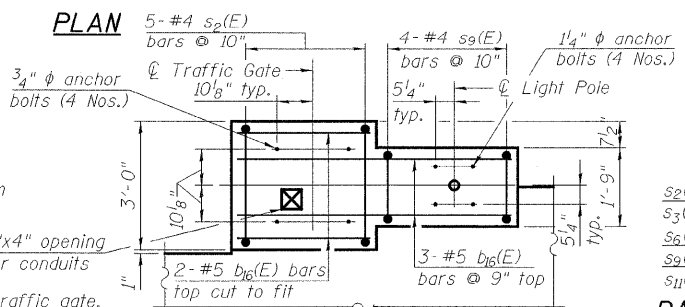
MINIMUM BAR LAP
(Slab)
#5 bar = 1'-8"



DESIGNED	M. SHAIKH
CHECKED	J. GRAINAWI
DRAWN	D. C. PATEL
CHECKED	A. HAMMAD

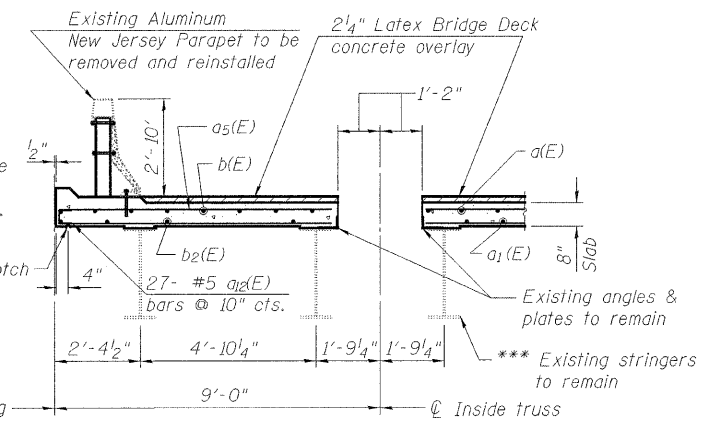
DETAIL B

* Coordinate location of traffic gate, light pole, anchor bolts & conduits with Mech. & Rdwy. lighting dwgs.
(Place reinforcement to miss anchor bolts & opening)



DETAIL C

BARS s₂(E), s₃(E), s₆(E), s₉(E) & s₁₁(E)



SECTION A-A

*** Existing stringers are non-composite and will be made composite with new reinforced concrete deck.

BAR b₇(E)

BARS b₄(E), c₂(E) & c₆(E)

BAR c₃(E)

BAR d(E)

BAR s₇(E)

BAR d₁(E)

BAR s₈(E)

BAR s₅(E)

BAR b₂₀(E)

BARS a₂(E) & s₄(E)

PB Americas, Inc.
230 WEST MONROE STREET,
SUITE 900
CHICAGO, IL. 60606

SHEET NO. 21
163 SHEETS

F.A.P. RTE.	SECTION	COUNTY	TOTAL SHEETS	SHEET NO.
389	2424.2B-R	COOK	398	102
CONTRACT NO.			60D61	
FED. ROAD DIST. NO. 7 ILLINOIS FED. AID PROJECT				

SOUTHEAST APPROACH SLAB
BILL OF MATERIAL

Bar No.	Size	Length	Shape
a ₁ (E)	63	#5	34'-10"
a ₂ (E)	29	#5	26'-6"
a ₃ (E)	35	#5	24'-6"
a ₄ (E)	25	#5	26'-5"
a ₅ (E)	50	#5	23'-10"
a ₆ (E)	89	#5	7'-6"
a ₇ (E)	40	#5	22'-10"
a ₈ (E)	18	#5	26'-6"
a ₉ (E)	2	#5	36'-5"
a ₁₀ (E)	15	#5	28'-2"
a ₁₁ (E)	72	#5	2'-1"
a ₁₂ (E)	18	#5	27'-0"
b(E)	44	#5	30'-0"
b ₁ (E)	4	#5	35'-11"
b ₂ (E)	33	#5	35'-0"
b ₃ (E)	2	#5	19'-3"
b ₄ (E)	3	#5	23'-8"
b ₅ (E)	23	#5	28'-8"
b ₆ (E)	18	#5	18'-3"
b ₇ (E)	36	#5	14'-7"
b ₈ (E)	47	#5	14'-0"
b ₉ (E)	25	#4	34'-11"
b ₁₀ (E)	22	#4	30'-7"
b ₁₁ (E)	8	#4	10'-9"
b ₁₂ (E)	4	#5	7'-0"
b ₁₃ (E)	51	#5	6'-6"
b ₁₄ (E)	184	#5	2'-2"
b ₁₅ (E)	14	#4	24'-3"
b ₁₆ (E)	4	#5	6'-4"
b ₁₇ (E)	46	#6	10'-9"
b ₁₈ (E)	46	#6	7'-6"
b ₁₉ (E)	2	#5	15'-0"
c(E)	48	#4	7'-1"
c ₂ (E)	20	#5	3'-10"
c ₃ (E)	74	#5	4'-2"
c ₄ (E)	76	#4	9'-6"
c ₅ (E)	27	#5	5'-0"
c ₆ (E)	54	#4	12'-6"
d(E)	57	#5	5'-7"
d ₁ (E)	53	#5	7'-8"
d ₂ (E)	8	#5	3'-4"
e ₂ (E)	8	#5	6'-0"
e ₃ (E)	14	#4	17'-5"
e ₄ (E)	7	#4	14'-7"
e ₅ (E)	1	#8	35'-0"
e ₆ (E)	1	#8	12'-9"
s ₂ (E)	5	#4	9'-1"
s ₃ (E)	63	#4	3'-1"
s ₄ (E)	48	#4	1'-8"
s ₅ (E)	7	#4	3'-9"
s ₆ (E)	4	#4	6'-11"
s ₇ (E)	4	#4	6'-5"
s ₈ (E)	4	#4	2'-11"
s ₉ (E)	4	#4	6'-7"
s ₁₀ (E)	24	#4	3'-3"
Reinforcement Bars, Epoxy Coated Concrete	Pound	20630	
Superstructure	Cu. Yd.	103	
Latex Bridge Deck Concrete Overlay, 2 1/4"	Sq. Yd.	283.7	
Bridge Deck Grooving	Sq. Yd.	270.2	
Protective Coat	Sq. Yd.	420	

SUPERSTRUCTURE
SOUTHEAST FIXED SPANS
STRUCTURE NO. 016-2445

Notes:
See sheet 22 of 163 for Section B-B, D-D through L-L.
See sheet 20 of 163 for Section C-C.
See sheet 29 of 163 for Detail A.
See sheet 26 of 163 for concrete parapet elevation.
Bars indicated thus 1 x 2 - #5 etc. indicates 1 line of bars with 2 lengths per line.

T:\16849A\Structural\Cadd\Pre-final\EB_Plans\0162445-60D61-021-SUP.dgn
17-JUN-2009 17:53