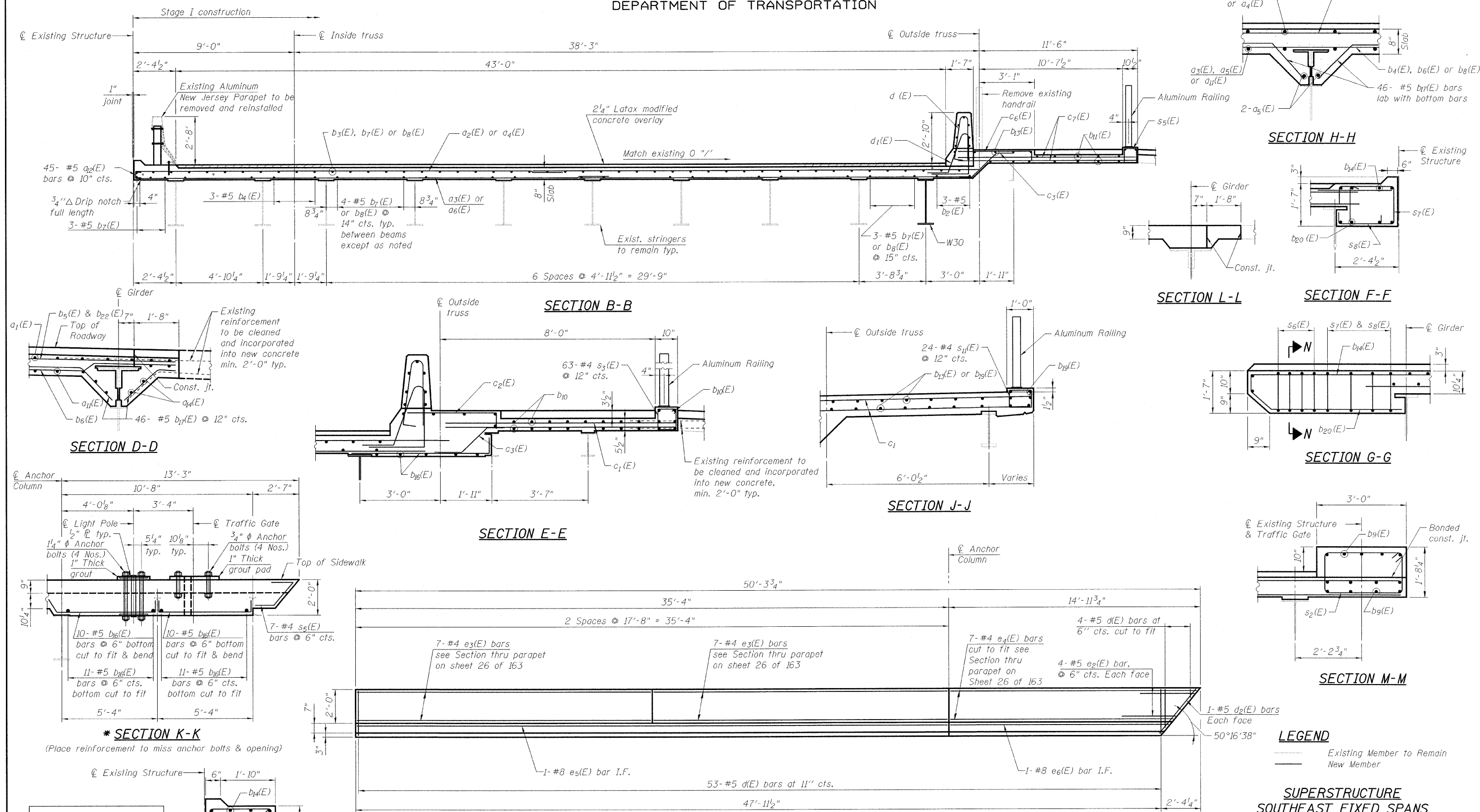


STATE OF ILLINOIS
DEPARTMENT OF TRANSPORTATION



INSIDE ELEVATION OF PARAPET

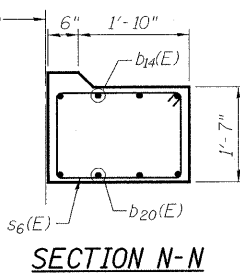
(Looking South at Southeast parapet)

Notes:
See sheet 24 of 163 for parapet joint details.
See Sheets 135 & 136 of 163 for Aluminum Railing.

LEGEND
 - - - Existing Member to Remain
 — New Member

**SUPERSTRUCTURE
SOUTHEAST FIXED SPANS
STRUCTURE NO. 016-2445**

DESIGNED	M. SHAIKH
CHECKED	J. GRAINAWI
DRAWN	D. C. PATEL
CHECKED	A. HAMMAD



SHEET NO. 22	F.A.P R.T.E.	SECTION	COUNTY	TOTAL SHEETS	SHEET NO.
	389	2424.2B-R	COOK	398	103
163 SHEETS	CONTRACT NO. 60D61			FED. ROAD DIST. NO. 7 ILLINOIS FED. AID PROJECT	

T:\16845A\Structural\Cadd\Pre-final\EB_Plans\0162445-60D61-022_SUP.dgn 05-JUN-2009 10:01