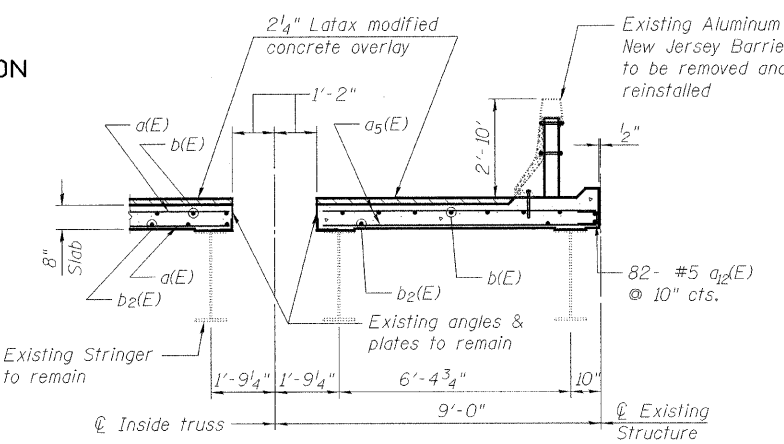
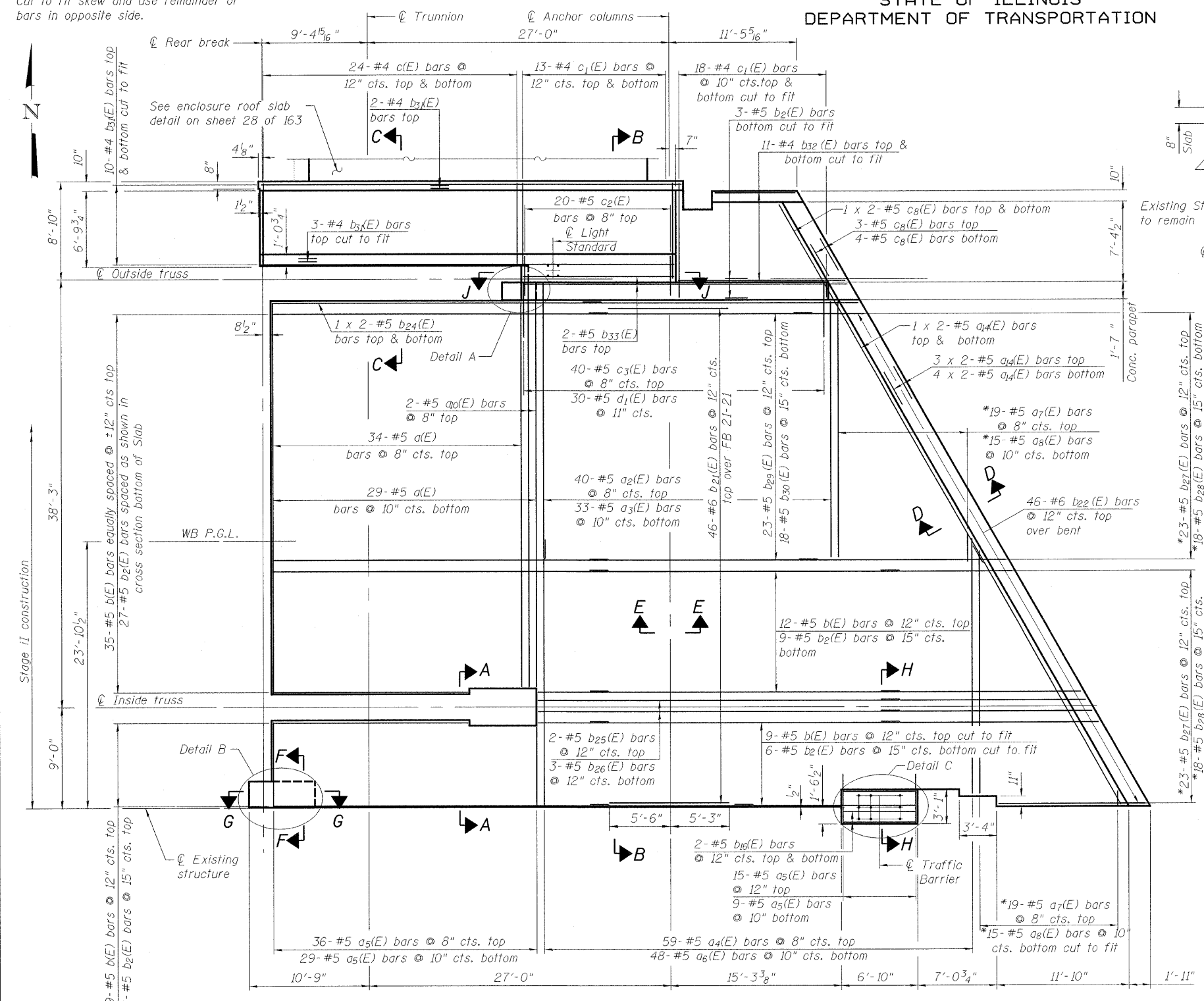
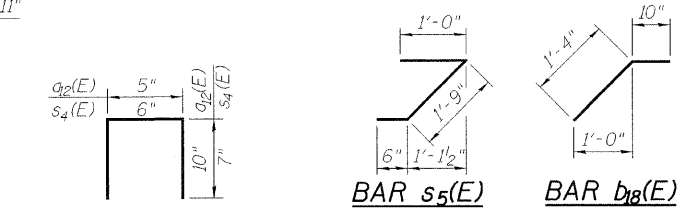
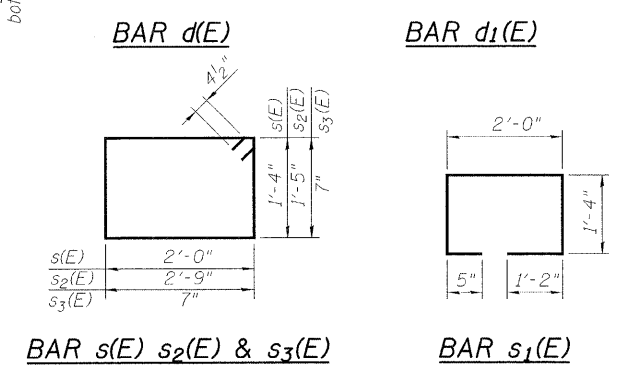
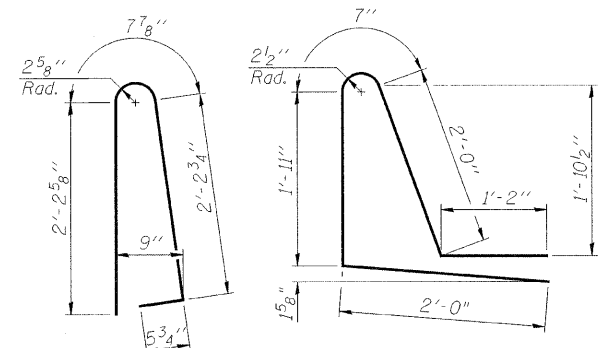
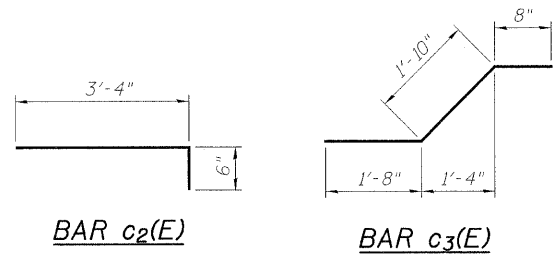


STATE OF ILLINOIS
DEPARTMENT OF TRANSPORTATION

* Order a7(E), a8(E), b27(E) & b28(E) bars full length.
Cut to fit skew and use remainder of
bars in opposite side.



SECTION A-A



NORTHEAST APPROACH SLAB
BILL OF MATERIAL

Bar	No.	Size	Length	Shape
a(E)	63	#5	34'-10"	—
a2(E)	40	#5	24'-6"	—
a3(E)	33	#5	26'-5"	—
a4(E)	59	#5	23'-10"	—
a5(E)	89	#5	7'-6"	—
a6(E)	48	#5	22'-10"	—
a7(E)	19	#5	25'-9"	—
a8(E)	15	#5	27'-5"	—
a9(E)	2	#5	36'-5"	—
a10(E)	109	#5	2'-1"	—
a11(E)	18	#5	27'-0"	—
b(E)	65	#5	30'-0"	—
b2(E)	51	#5	35'-0"	—
b3(E)	4	#5	7'-0"	—
b4(E)	4	#5	8'-6"	—
b5(E)	29	#5	6'-6"	—
b6(E)	184	#5	2'-2"	—
b7(E)	46	#6	10'-9"	—
b8(E)	46	#6	7'-6"	—
b9(E)	4	#5	26'-2"	—
b10(E)	2	#5	30'-9"	—
b11(E)	3	#5	34'-9"	—
b12(E)	23	#5	36'-2"	—
b13(E)	18	#5	27'-0"	—
b14(E)	23	#5	12'-8"	—
b15(E)	18	#5	8'-5"	—
b16(E)	25	#4	37'-7"	—
b17(E)	22	#4	13'-6"	—
b18(E)	2	#5	13'-0"	—
c(E)	48	#4	7'-1"	—
c1(E)	62	#4	10'-2"	—
c2(E)	20	#5	3'-10"	—
c3(E)	40	#5	4'-2"	—
c4(E)	15	#5	7'-6"	—
c5(E)	9	#5	10'-10"	—
d(E)	34	#5	5'-7"	—
d1(E)	30	#5	7'-8"	—
d2(E)	2	#5	3'-4"	—
e(E)	7	#4	14'-8"	—
e1(E)	1	#8	13'-0"	—
e2(E)	8	#5	6'-0"	—
e3(E)	7	#4	13'-11"	—
e4(E)	1	#8	13'-11"	—
s(E)	9	#4	7'-5"	□
s1(E)	4	#4	6'-3"	□
s2(E)	4	#4	9'-1"	□
s3(E)	39	#4	3'-1"	□
s4(E)	48	#4	1'-8"	—
s5(E)	7	#4	3'-9"	—
s6(E)	7	#4	3'-0"	—
Reinforcement Bars, Epoxy Coated	Pound		20170	
Concrete Superstructure	Cu. Yd.		101.2	
Latex Bridge Deck Concrete Overlay, 2 1/4"	Sq. Yd.		305	
Bridge Deck Grooving	Sq. Yd.		290.1	
Protective Coat	Sq. Yd.		445	

SUPERSTRUCTURE
NORTHEAST FIXED SPANS
STRUCTURE NO. 016-2445

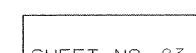
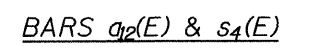
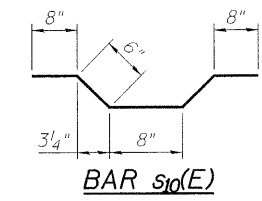
MINIMUM BAR LAP
(Slab)
#5 bar = 1'-8"

DESIGNED	M. SHAIKH
CHECKED	J. GRAINAWI
DRAWN	D. C. PATEL
CHECKED	A. HAMMAD

LEGEND
— Existing Member to Remain
— New Member

PLAN

Notes:
See sheet 20 of 163 for Section C-C,
F-F & G-G.
See sheet 29 of 163 for Detail A.
See sheet 26 of 163 for concrete parapet
elevation.
See sheet 19 of 163 for Detail B & C
opposite hand.
Bars indicated thus 1 x 2 -#5 etc. indicates
1 line of bars with 2 lengths per line.



PB Americas, Inc.
230 WEST MONROE STREET,
SUITE 900
CHICAGO, IL. 60606

F.A.P. RTE.	SECTION	COUNTY	TOTAL SHEETS	SHEET NO.
389	2424.2B-R	COOK	398	104
CONTRACT NO.			60D61	
FED. ROAD DIST. NO. 7 ILLINOIS FED. AID PROJECT				

T:\16843A\Structural\Cadd\Pre-final\EB_Plans\0162445-60D61-023-SUP.dgn
17-JUN-2009 17:53