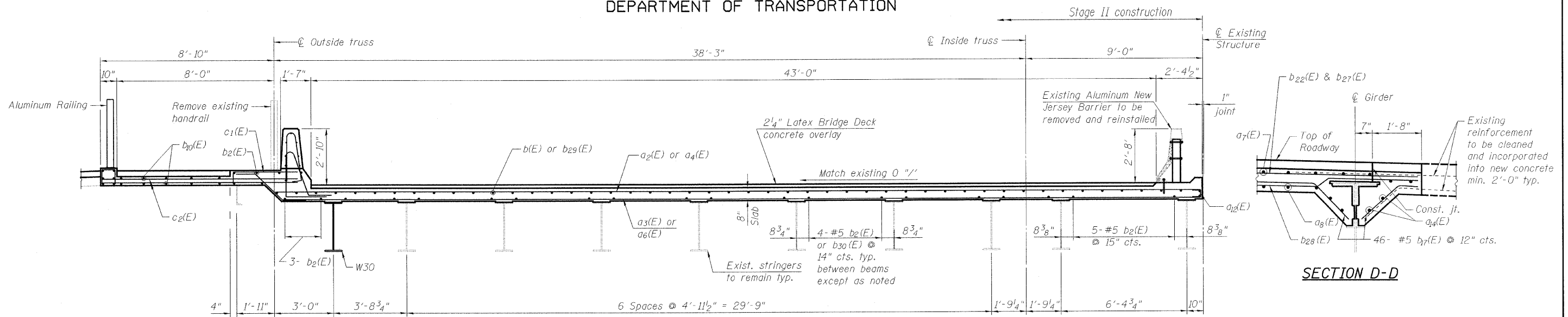
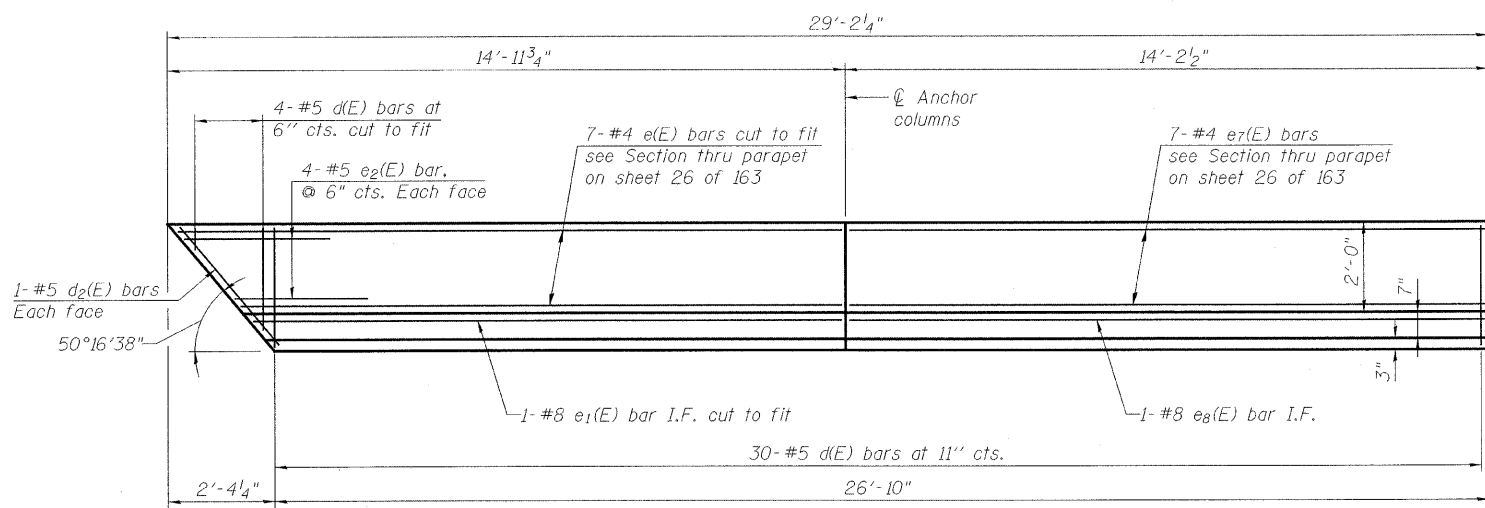


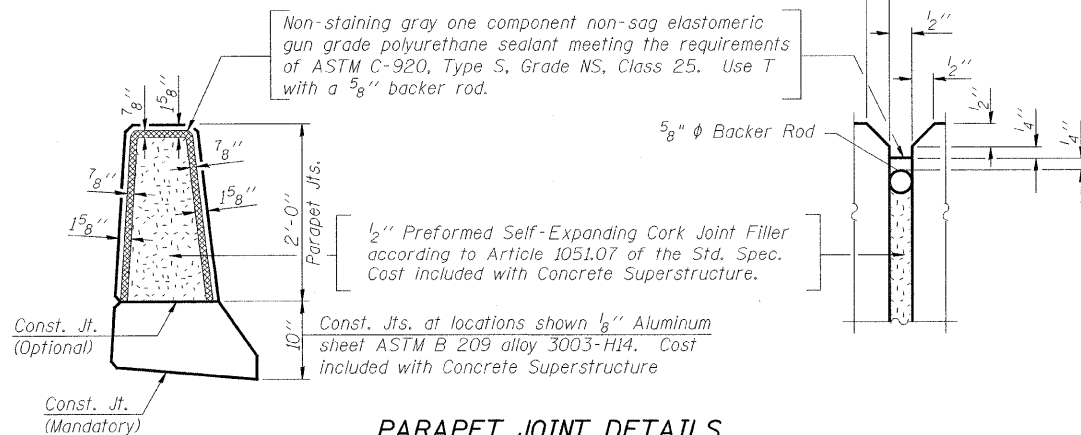
STATE OF ILLINOIS  
DEPARTMENT OF TRANSPORTATION



SECTION B-B



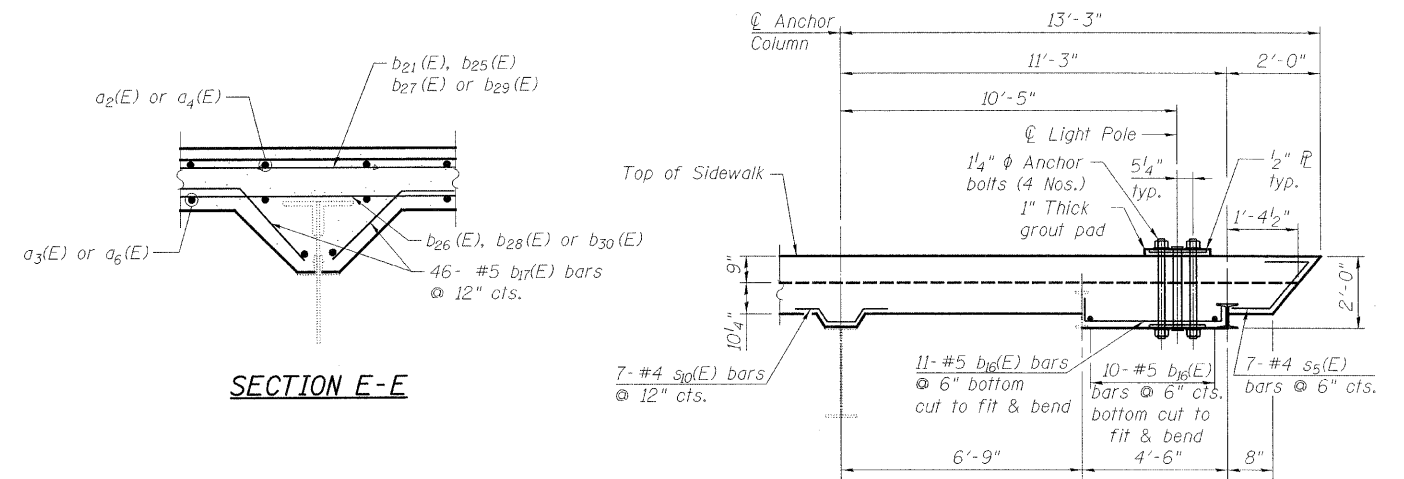
INSIDE ELEVATION OF PARAPET  
(Looking North at Northeast parapet)



PARAPET JOINT DETAILS

Notes:

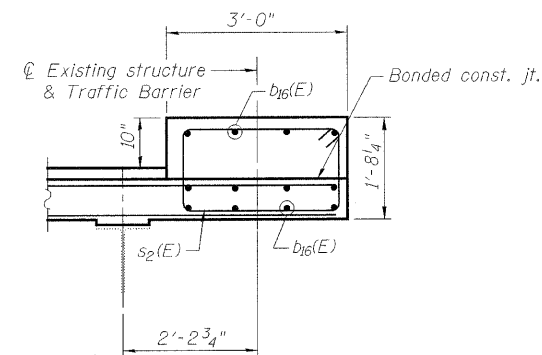
The exterior surfaces of the floor drains shall be painted with the finish coat as specified in the special provisions for Cleaning and Painting New Metal Structures. The exterior surfaces of the drains shall be cleaned according to Steel Structures Painting Council's Spec. SSPC-SP1 prior to painting. Fiberglass pipe shall conform to ASTM D 2996, with short-time rupture strength hoop tensile stress of 30,000 p.s.i. minimum.



SECTION E-E

\* SECTION J-J

(Place reinforcement to miss anchor bolts)



SECTION H-H

\* Coordinate location of light pole, anchor bolts, conduit & base plate sizes with Rdwy. lighting dwgs.

Note:

See Sheets 135 & 136 of 163 for Aluminum Railing.

LEGEND

--- Existing Member to Remain  
— New Member

SUPERSTRUCTURE  
NORTHEAST FIXED SPANS  
STRUCTURE NO. 016-2445

DESIGNED	M. SHAIKH
CHECKED	J. GRAINAWI
DRAWN	D. C. PATEL
CHECKED	A. HAMMAD

SHEET NO. 24 163 SHEETS	F.A.P. RTE.	SECTION	COUNTY	TOTAL SHEETS	SHEET NO.
	389	2424.2B-R	COOK	398	105
CONTRACT NO. 60D61				FED. ROAD DIST. NO. 7 ILLINOIS FED. AID PROJECT	

**PB Americas, Inc.**  
230 WEST MONROE STREET,  
SUITE 900  
CHICAGO, IL. 60606