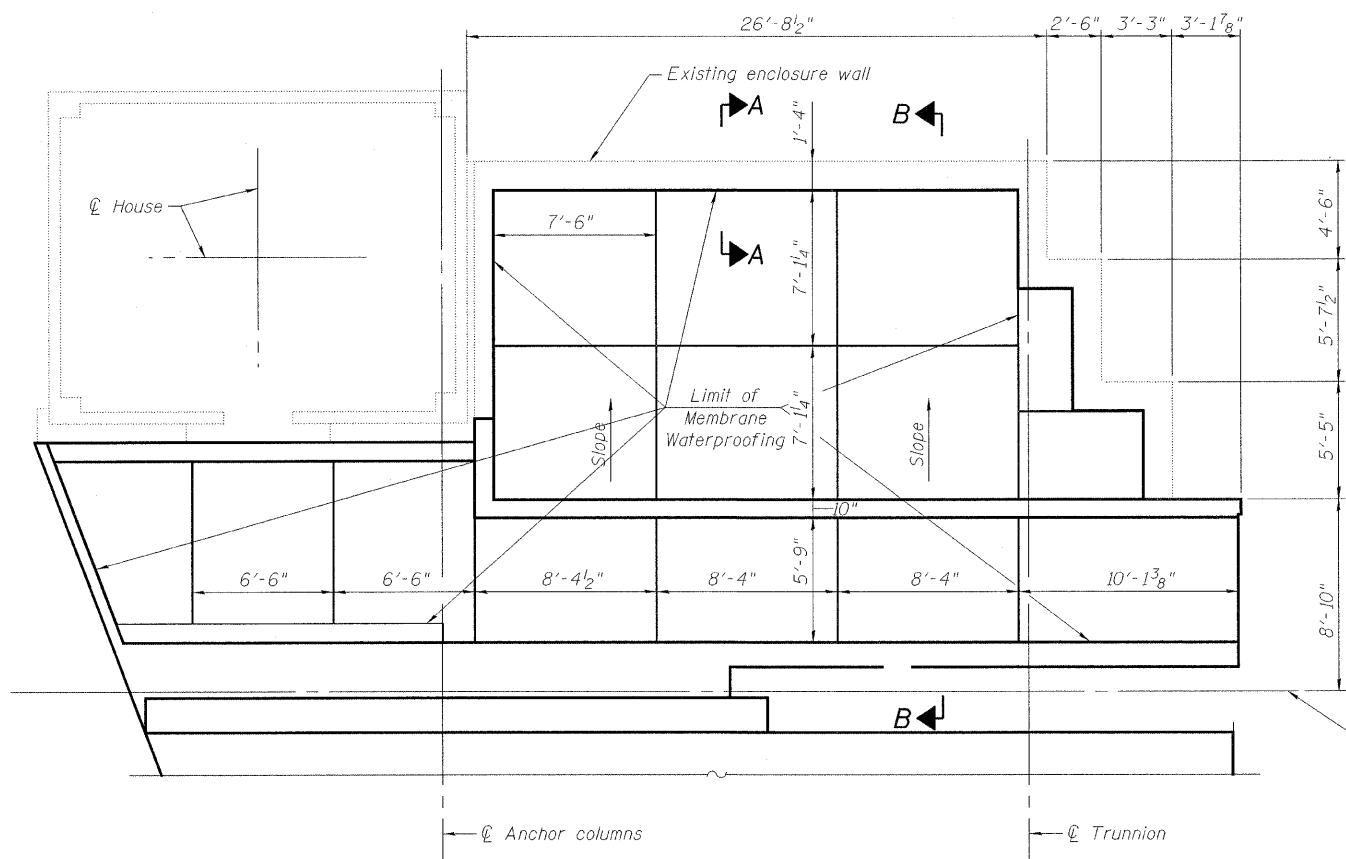
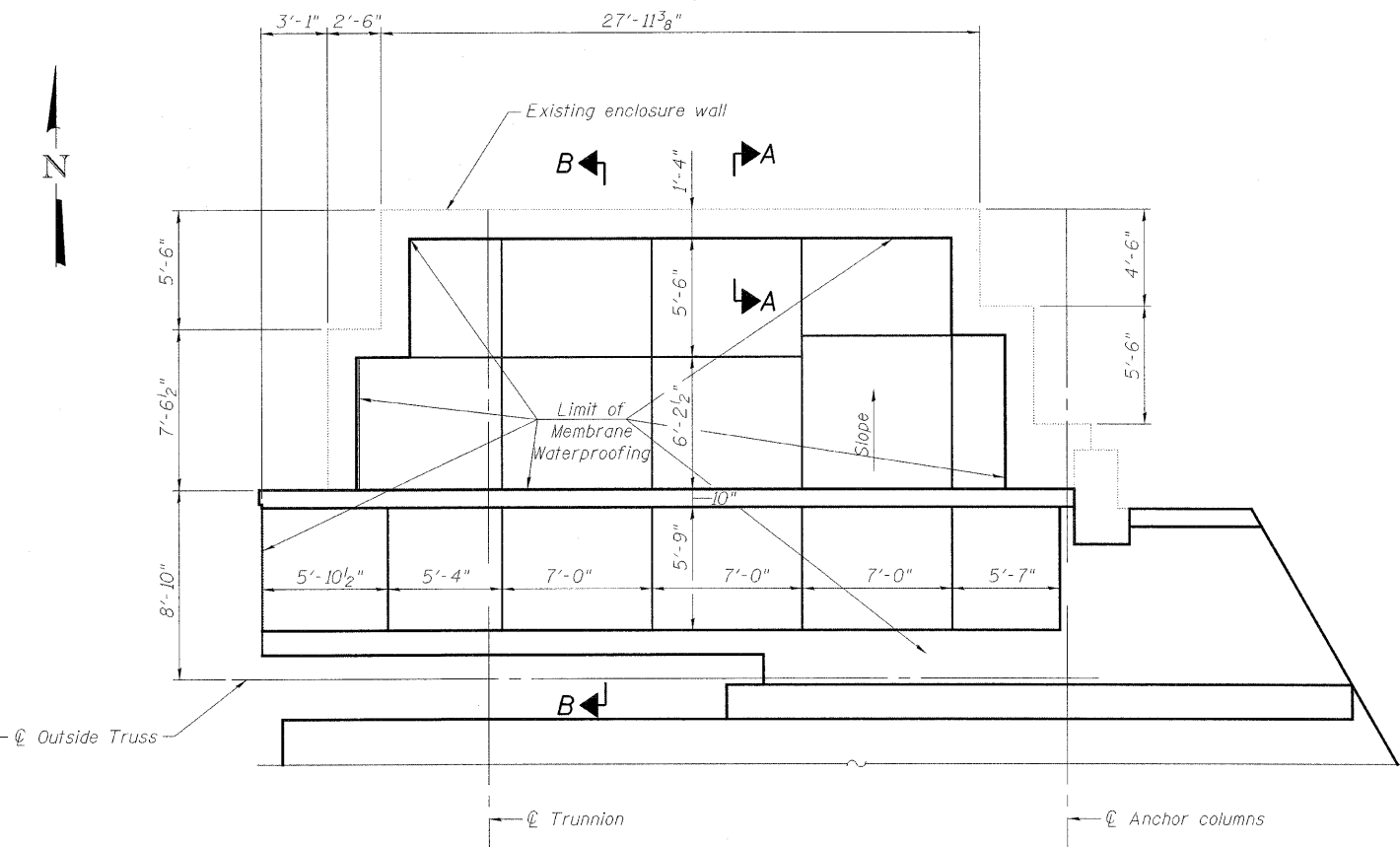


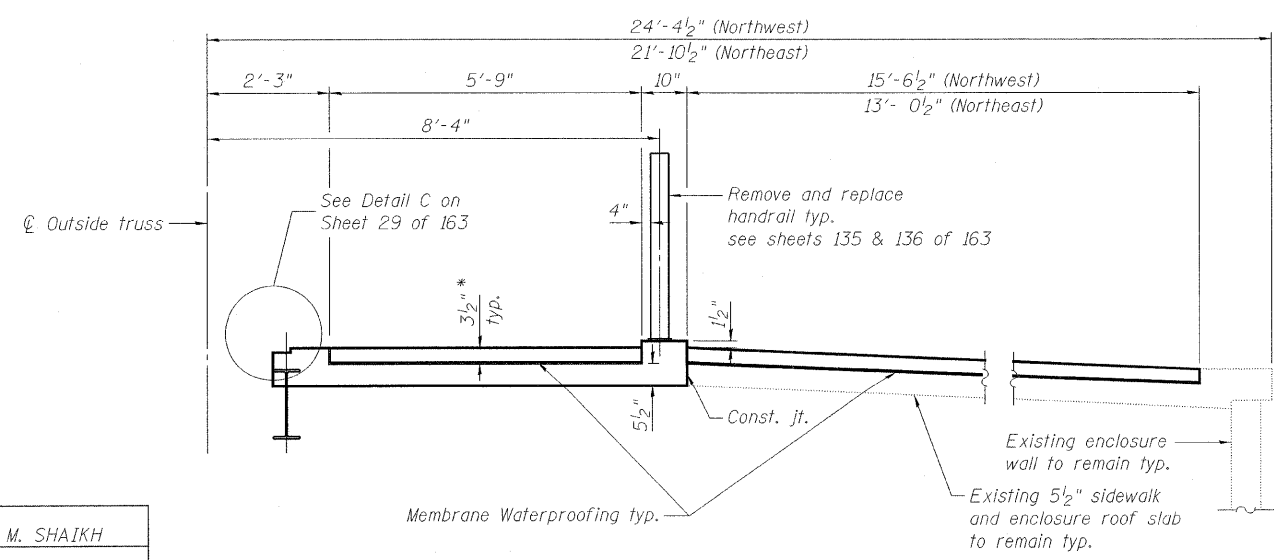
STATE OF ILLINOIS
DEPARTMENT OF TRANSPORTATION



NORTHWEST PLAN



NORTHEAST PLAN



SECTION B-B

* Concrete quantity is included in the concrete superstructure

BILL OF MATERIAL

Item	Unit	Quantity
Membrane Waterproofing	Sq. Ft.	725

Note:
See sheet 27 of 163 for section A-A, typical section and reinforcement details.

**SIDEWALK PLAN
FIXED SPANS (WB)
STRUCTURE NO. 016-2445**

DESIGNED	M. SHAIKH
CHECKED	J. GRAINAWI
DRAWN	D. C. PATEL
CHECKED	A. HAMMAD

PB Americas, Inc.
230 WEST MONROE STREET,
SUITE 900
CHICAGO, IL. 60606

SHEET NO. 28 163 SHEETS	F.A.P RTE.	SECTION	COUNTY	TOTAL SHEETS	SHEET NO.
	389	2424.2B-R	COOK	398	109
			CONTRACT NO. 60D61		
FED. ROAD DIST. NO. 7 ILLINOIS FED. AID PROJECT					

T:\16843A\Structural\Cadd\Pre-final\EB_Plans\0162445-60D61-SUP-027.dgn 07-MAY-2009