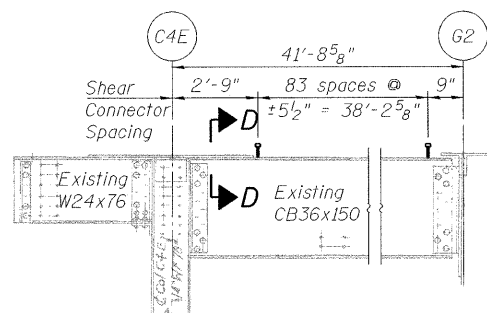
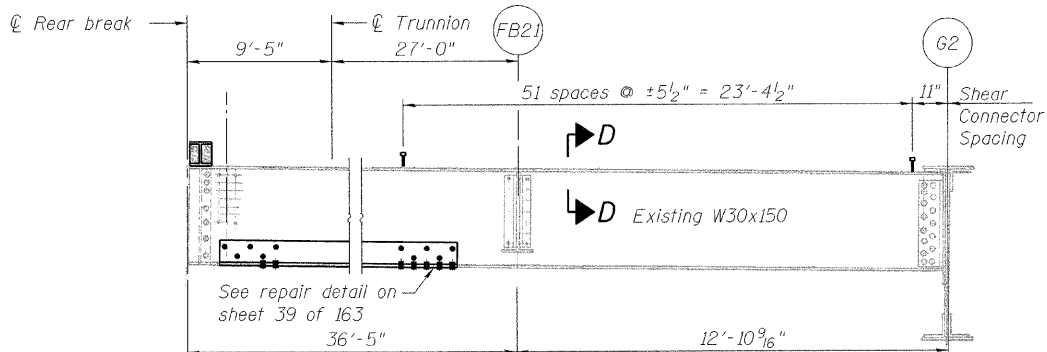


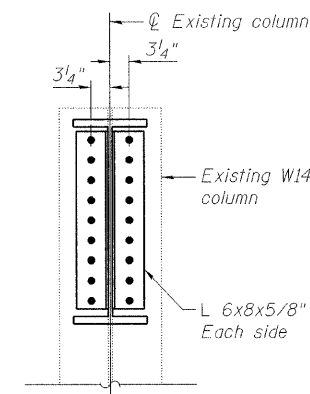
STATE OF ILLINOIS  
DEPARTMENT OF TRANSPORTATION



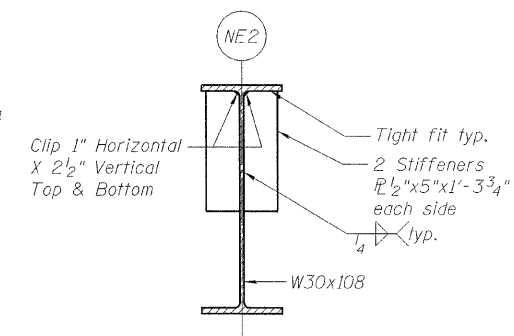
STRINGER SE1



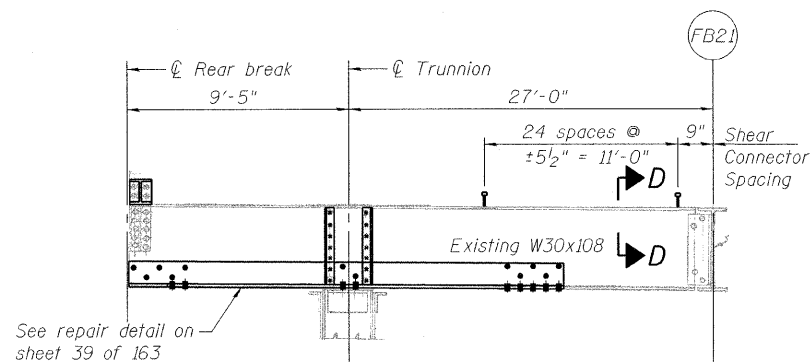
STRINGER SE2



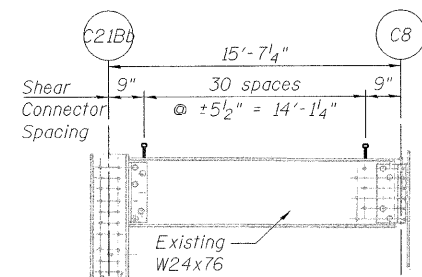
SECTION B-B



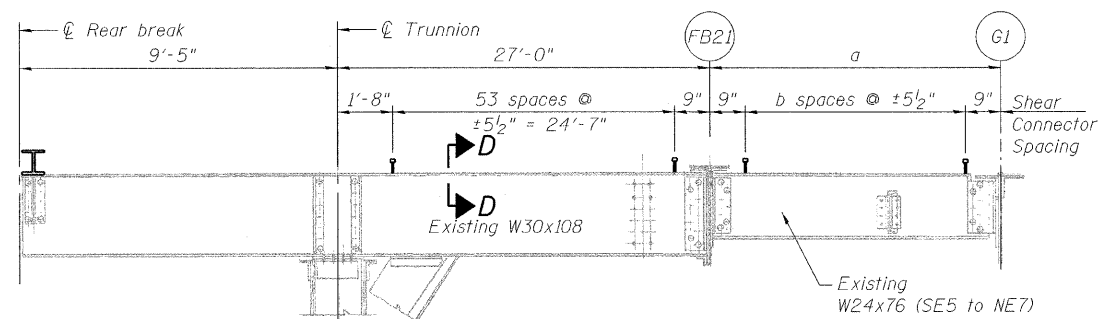
SECTION C-C



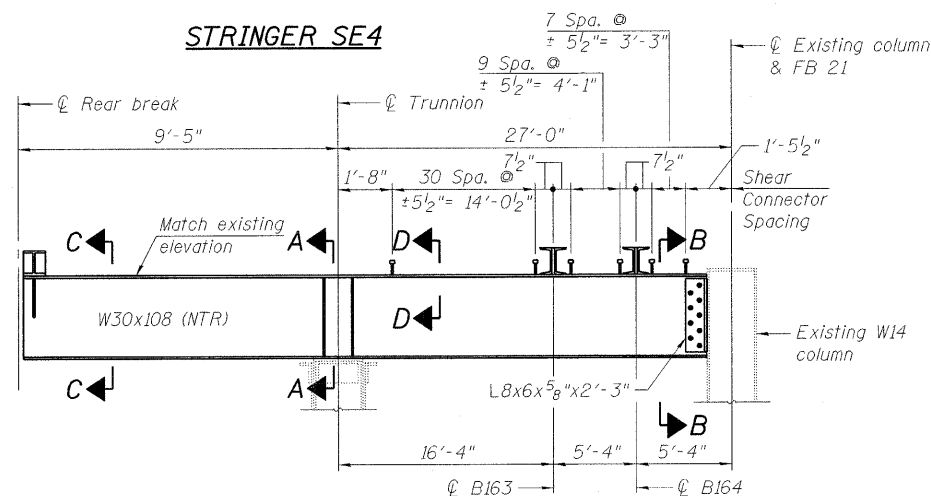
STRINGER SE3



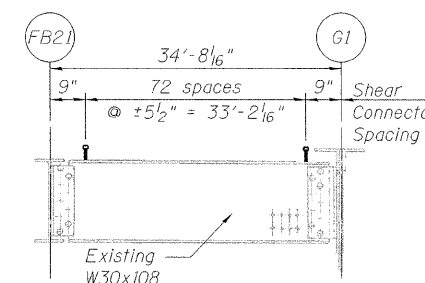
STRINGER SE4



STRINGER SE5 TO SE10



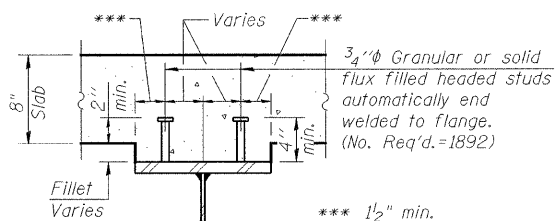
STRINGER SE11



STRINGER SE12

Beam Length and  
Shear Connector Spacing

Stringer	a	b
SE5	17'-8 1/6"	35
SE6	20'-6 1/6"	41
SE7	23'-4 3/4"	47
SE8	26'-2 3/4"	53
SE9	29'-0 3/4"	60
SE10	31'-10 3/4"	66



SECTION D-D

Notes:

Portions of this drawing are extracted from original drawings for this bridge. Details shown are provided to illustrate the work to be performed.  
For Section A-A, see sheet 35 of 163.  
Load carrying components designated "NTR" shall conform to the supplemental requirements for Notch Toughness, Zone 2.

LEGEND

- Existing fastener to remain
- Hole to match existing location
- New hole
- Existing member to remain
- New member

FRAMING DETAILS  
SOUTHEAST FIXED SPANS  
STRUCTURE NO. 016-2445

DESIGNED	A. HAMMAD
CHECKED	J. GRAINAWI
DRAWN	D. C. PATEL
CHECKED	A. HAMMAD

**PB Americas, Inc.**  
230 WEST MONROE STREET,  
SUITE 900  
CHICAGO, IL. 60606

SHEET NO. 36	F.A.P RTE. 389	SECTION 2424.2B-R	COUNTY COOK	TOTAL SHEETS 398	SHEET NO. 117
163 SHEETS	CONTRACT NO. 60D61		FED. ROAD DIST. NO. 7 ILLINOIS FED. AID PROJECT		