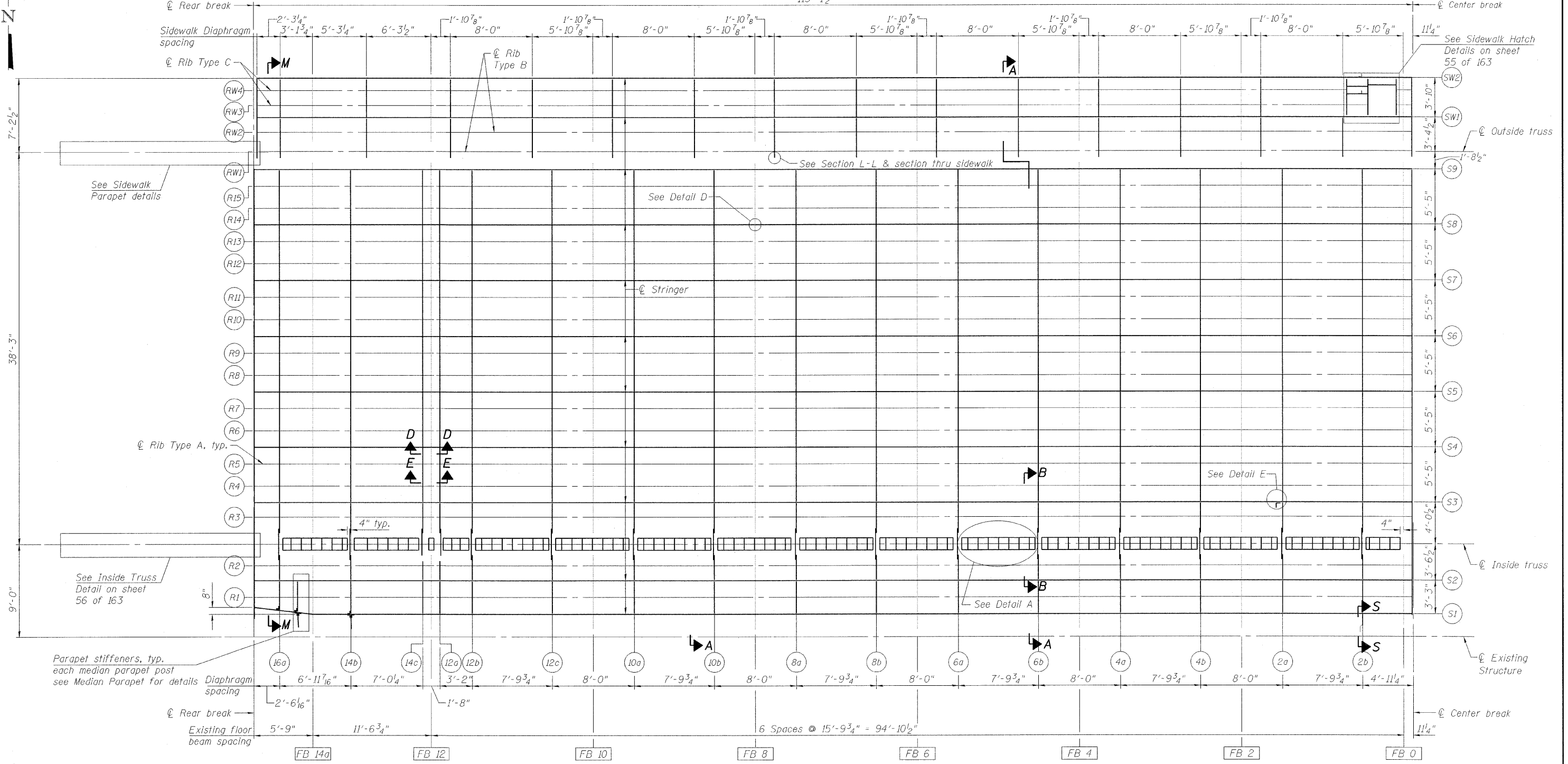


STATE OF ILLINOIS
DEPARTMENT OF TRANSPORTATION

113'-1 1/2"



ORTHOTROPIC FRAMING PLAN NORTHWEST LEAF
(Stiffeners and Parapet bracing not shown for clarity)

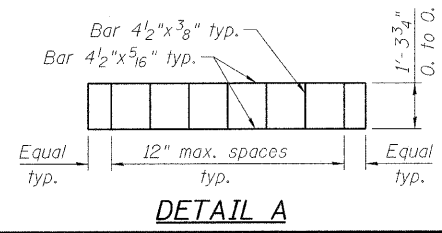
**DECK FRAMING PLAN
NORTHWEST MOVABLE SPAN
STRUCTURE NO. 016-2445**

DESIGNED	P. PILARSKI
CHECKED	J. GRAINAWI
DRAWN	D. C. PATEL
CHECKED	A. HAMMAD

LEGEND

-----	Existing member
-----	New member

Notes:
Dimension to diaphragms are to back of channel or back face of plate diaphragm.
For Section A-A & B-B see sheet 48 of 163.
For Sections D-D & E-E and Detail D see sheet 53 of 163.
For Detail E and Section S-S see sheet 54 of 163.
For Section M-M see sheet 59 of 163.



PB Americas, Inc.
230 WEST MONROE STREET,
SUITE 900
CHICAGO, IL. 60606

SHEET NO. 52 163 SHEETS	F.A.P R.T.E.	SECTION	COUNTY	TOTAL SHEETS	SHEET NO.
	389	2424.2B-R	COOK	398	133
FED. ROAD DIST. NO. 7 ILLINOIS FED. AID PROJECT			CONTRACT NO. 60D61		

T:\1634\Structural\Cadd\Pre-final\EB_Plans\0162445-80D61-SUP-052.dgn 07-MAY-2009