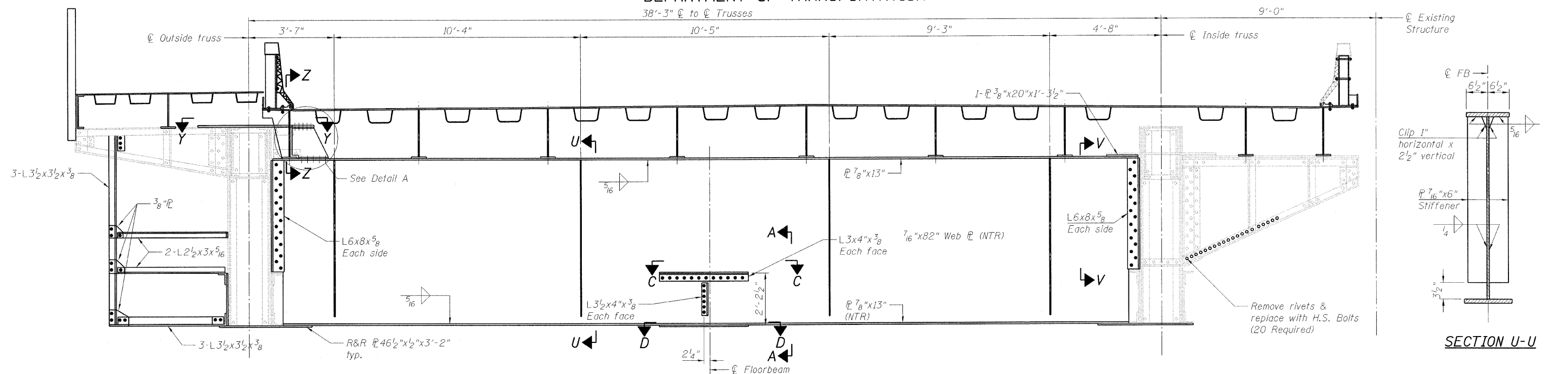
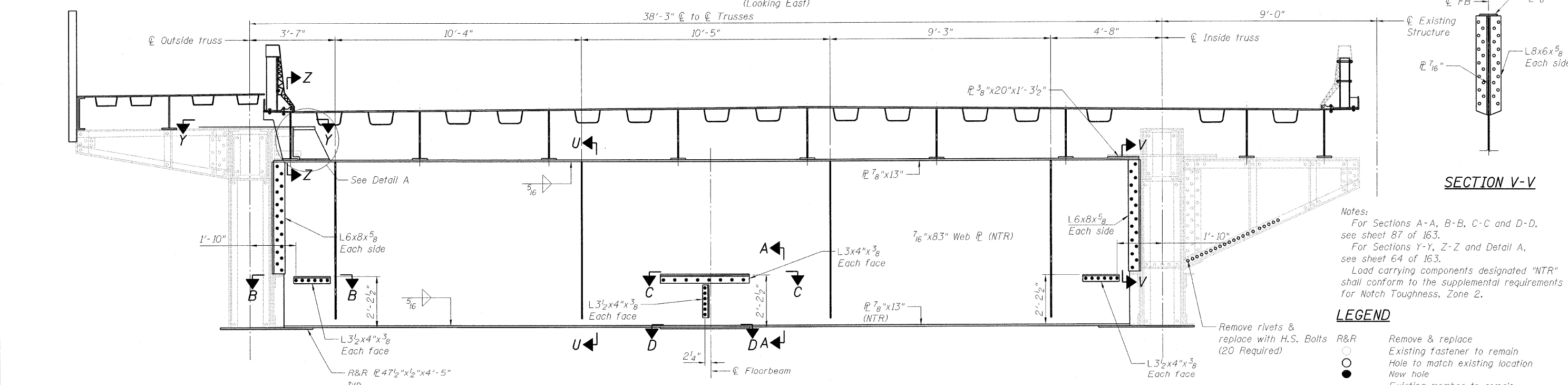


STATE OF ILLINOIS  
DEPARTMENT OF TRANSPORTATION

38'-3"  $\phi$  to  $\phi$  Trusses



**FLOORBEAM 2-2**  
(Looking East)



**FLOORBEAM 4-4**  
(Looking East)

Notes:  
For Sections A-A, B-B, C-C and D-D, see sheet 87 of 163.  
For Sections Y-Y, Z-Z and Detail A, see sheet 64 of 163.  
Load carrying components designated "NTR" shall conform to the supplemental requirements for Notch Toughness, Zone 2.

**LEGEND**

R&R	Remove & replace
○	Existing fastener to remain
○	Hole to match existing location
●	New hole
---	Existing member to remain
---	New member

**FLOORBEAM DETAILS**  
**NORTHWEST LEAF**  
**STRUCTURE NO. 016-2445**

DESIGNED	B. GILHOUSEN
CHECKED	J. GRAINAWI
DRAWN	D. C. PATEL
CHECKED	A. HAMMAD

**PB Americas, Inc.**  
230 WEST MONROE STREET,  
SUITE 900  
CHICAGO, IL. 60606

SHEET NO. 80  163 SHEETS	F.A.P RTE.	SECTION	COUNTY	TOTAL SHEETS	SHEET NO.
	389	2424.2B-R	COOK	398	161
			CONTRACT NO. 60D61		
FED. ROAD DIST. NO. 7 ILLINOIS FED. AID PROJECT					

T:\16843A\Structural\Cadd\Pre-final\EB\_Plans\0162445-60D61-FBE-078.dgn  
07-MAY-2009